

International One Design

Class Rules



The International One Design was commissioned by Cornelius Shields & designed by Bjarne Aas in 1936.

INDEX

PART I - ADMINISTRATION	5
SECTION A - GENERAL	5
A.1 LANGUAGE	5
A.2 ABBREVIATIONS	5
A.3 AUTHORITIES	5
A.4 ADMINISTRATION OF THE CLASS	5
A.5 CLASS RULES CHANGES	5
A.6 CLASS RULE AMENDMENTS	5
A.7 CLASS RULE INTERPRETATION	6
A.8 INTERNATIONAL CLASS FEE, CLASS ROYALTY	6
A.9 SAIL NUMBERS	6
A.10 HULL CERTIFICATION	6
A.11 INITIAL HULL CERTIFICATION	6
A.12 VALIDITY OF CERTIFICATE	7
A.13 HULL RE-CERTIFICATION	7
A.14 RETENTION OF CERTIFICATION DOCUMENTATION	7
A.15 APPLICATION/IMPLEMENTATION	7
A.16 LOCAL FLEET RULES	8
A.17 LIST OF PLANS:	9
SECTION B - BOAT ELIGIBILITY	10
B.1 CLASS RULES & CERTIFICATION	10
PART II - REQUIREMENTS & LIMITATIONS	11
SECTION C - CONDITIONS FOR RACING	11
C.1 RULES	11
C.2 PERSONAL EQUIPMENT	11
C.3 PORTABLE EQUIPMENT	11
C.4 RIG	11
C.5 SAILS	11
C.6 ADVERTISING	12
SECTION D - HULL	12
D.1 GENERAL	12
D.2 HULL SHELL	12
D.3 DECK	13
D.4 CABIN	14
D.5 COCKPIT	15
D.6 BULKHEADS	16
D.7 MAST STEP	16
D.8 RECONSTRUCTION	16
SECTION E - HULL APPENDAGES	16
E.1 KEEL	17
E.2 RUDDER, STOCK & TILLER	17
SECTION F - RIG	17
F.1 GENERAL	17
F.2 MAST	18
F.3 BOOM	20
F.4 SPINNAKER POLE	20
F.5 STANDING RIGGING	20
F.6 RUNNING RIGGING	21
SECTION G - SAILS	22
G.1 MAINSAIL	22

International One Design Class Rules

G.2	JIB	22
G.3	SPINNAKER	23
PART III - APPENDICES		24
SECTION H - MODERN RIG		24
H.1	SPARS	24
H.2	SAILS	27

International One Design Class Rules

INTRODUCTION

The International One-Design (IOD) Class was conceived to build, maintain and race a fleet of "One-Design Yachts, distinctive in appearance and performance, using one-design racing, and especially to develop the competitive capacities of both helmsmen and crews under the fairest and most equal conditions."

The design of the International One-Design was inspired by a Six Metre created by the famous Norwegian naval architect and builder Bjarne Aas, in 1935. Cornelius Shields, Sr., impressed by Saga's beauty and handling qualities, initiated action for an entire Class similar in design and appearance, but with a loftier rig and a short shelter and storage cabin. Aas submitted plans and specifications in 1936 and a syndicate was formed.

In late 1936, twenty-five International One-Designs were delivered from Norway and commenced racing on Long Island Sound. Since that time, other fleets have formed in Norway, Sweden, the UK, Bermuda, Canada and the United States. With 12 fleets in 6 countries and over 150 boats actively racing, the International One Design was the first class to be recognized by World Sailing (WS) as a "Classic" One Design Class.

This introduction only provides an informal background and the International One Design Class Rules proper begin on the next page.

IOD rigs and sails are measurement controlled. IOD hulls and hull appendages are measurement controlled, unless built with class-owned or class-approved molds.

IOD hulls, hull appendages, shall only be manufactured by class-approved builders.

Owners and crews should be aware that compliance with rules in Section C is not checked as part of the certification process. Rules regulating the conditions for racing are contained in Section C of these class rules, in Part I of the Equipment Rules of Sailing and in the Racing Rules of Sailing.

International One Design Class Rules

PART I - ADMINISTRATION

These rules are **open class rules** where anything not specifically prohibited by the **class rules** is permitted.

Section A - General

A.1 LANGUAGE

- A.1.1 The official language of the class is English and in case of dispute over translation the English text shall prevail.
- A.1.2 The word “shall” is mandatory and the word “may” is permissive.
- A.1.3 Except where used in headings, when a term is printed in “**bold**” the definition in the ERS applies and when a term is printed in “*italics*” the definition in the RRS applies.

A.2 ABBREVIATIONS

- A.2.1 WS World Sailing
- MNA WS Member National Authority
- IODWCA International One Design World Class Association
- LFA Local Fleet Association
- ERS Equipment Rules of Sailing
- RRS Racing Rules of Sailing

A.3 AUTHORITIES

- A.3.1 The international authority of the class is WS which shall cooperate with the IODWCA in all matters concerning these **class rules**.
- A.3.2 The **certification authority** is the IODWCA Executive Committee.
- A.3.3 Notwithstanding anything contained herein, the **certification authority** has the authority to withdraw a **certificate** and shall do so on the request of WS.

A.4 ADMINISTRATION OF THE CLASS

- A.4.1 WS has delegated its administrative functions to the IODWCA which shall oversee all administrative functions of the class in accordance with the IODWCA Constitution and By-Laws.

A.5 CLASS RULES CHANGES

- A.5.1 At Class Events - see RRS 89.1.d) - WS Regulations 10.5(f) applies. At all other events RRS 87 Applies.

A.6 CLASS RULE AMENDMENTS

- A.6.1 Amendments to these **class rules** are subject to the approval of WS in accordance with WS Regulations.
- A.6.2 Any amendments to these rules must be recommended by a majority of the IODWCA Technical Committee and approved by a two-thirds majority of the IODWCA Executive Committee.

International One Design Class Rules

A.6.3 Any approved amendment shall not take effect until the beginning of the following calendar year.

A.7 CLASS RULE INTERPRETATION

A.7.1 Interpretation of **class rules** shall be made by the IODWCA in accordance with the WS Regulations.

A.8 INTERNATIONAL CLASS FEE, CLASS ROYALTY

A.8.1 Approved **hull** builder shall pay the International Class Fee.

A.8.2 WS shall, after having received the International Class Fee for the **hull**, send the WS Building Plaque and a measurement form to the licensed hull builder.

A.8.3 New **boats** shall be required to pay a Royalty Fee to the IODWCA in accordance with the Schedule of Fees.

A.9 SAIL NUMBERS

A.9.1 **Sail** numbers shall be issued by the LFA. Numbers need not be consecutive.

A.10 HULL CERTIFICATION

A.10.1 A **certificate** shall record the following information:

- A. Class
- B. **Certification Authority**
- C. Sail number issued by the LFA
- D. Owner
- E. Hull identification
- F. Builder/Manufacturers details
- G. Date of issue of initial **certificate**
- H. Date of issue of **certificate**

A.11 INITIAL HULL CERTIFICATION

A.11.1 For a **certificate** to be issued to hull not previously **certified**:

- A. **Certification control** shall be carried out by the **official measurer** who shall complete the appropriate documentation.
- B. The documentation and **certification** fee, if required, shall be sent to the **certification authority**.
- C. Upon receipt of a satisfactorily completed documentation and **certification** fee, if required, the **certification authority** may issue a **certificate**.

A.11.2 **Hulls** must be built by IODWCA-approved builders. Interested builders may apply to the IODWCA for designation as an Approved Builder. Approved commercial builders are as follows (active builders are underlined):

International One Design Class Rules

1936 -1967,	Wood, A.S. Bjarne Aas Yacht Verft, Ltd.
1968-1973,	Fiberglass, A.S. Bjarne Aas Yacht Verft, Ltd.
1974-1976,	Fiberglass, Henrik Aas
1976-1979,	Fiberglass, Harry Farmer
1980-1988,	Fiberglass, Able Marine, Southwest Harbor ME & Bermuda IOD Company, Ltd.
1990-1994,	Fiberglass, Silvers Marine, Ltd., Rosneath, Scotland
1990-1995,	Fiberglass, Offshore Glass Co. Portland, ME
1997-2005,	Fiberglass, C. W. Hood Yachts, Marblehead, MA
<u>1996-Present</u>	<u>Fiberglass, Tjörns Yachtsservice, Almösund, Sweden</u>
2006-2012,	Fiberglass, Shaw Yachts, Rockland, ME
<u>2009-Present</u>	<u>Wood, Tern Boatworks, Chester Basin, NS, Canada</u>
<u>2016-Present</u>	<u>Fiberglass, South Shore Marine, Chester Basin, NS, Canada</u>

A.12 VALIDITY OF CERTIFICATE

A.12.1 A **hull certificate** becomes invalid upon:

- A. the change to any items recorded on the **hull certificate** as required under A.10.
- B. the date of expiry,
- C. withdrawal by the **certification authority**,
- D. the issue of a new **certificate**.

A.13 HULL RE-CERTIFICATION

A.13.1 The **certification authority** may issue a **certificate** to a previously certified **hull**:

- A. when it is invalidated under A.12.1(a) or (b), after receipt of the old **certificate**, and **certification** fee if required.
- B. when it is invalidated under A.12.1 (c), at its discretion.
- C. in other cases, by application of the procedure in A.11.

A.14 RETENTION OF CERTIFICATION DOCUMENTATION

A.14.1 The **certification authority** shall retain the original documentation upon which the current certificate is based.

A.15 APPLICATION/IMPLEMENTATION

A.15.1 For a boat to be eligible for racing, it shall comply with the rules in this Section.

A.15.2 Unless significantly altered after May 1, 2014, the hulls of all **boats** constructed prior to that date need not comply with Section D.2 of these rules.

International One Design Class Rules

A.15.3 Substantial renovations or reconstructions after January 1, 2015 shall be allowed to recreate documented original conditions, but otherwise shall comply with these rules.

A.15.4 Questions regarding compliance shall be made in writing to the IODWCA Technical Committee.

A.16 LOCAL FLEET RULES

A.16.1 Individual fleets must request permission from the IODWCA for any changes to the Class Rules. The IODWCA may grant fleet-specific amendments to these rules for local or historical conditions that warrant exception in accordance with the procedures in Section A.6. Fleet-specific amendments to these rules are listed below by Fleet.

A. Bermuda Fleet (BDA) established 1937

1. All **boats** in the BDA Fleet shall use the Modern **Rig**.

B. Chester Fleet (CHE) established 2009

1. All **boats** in the CHE Fleet shall use the Modern **Rig**.

C. Falmouth Fleet (FAL) established 2007

1. All **boats** in the FAL Fleet shall use the Modern **Rig**.

D. Fishers Island Fleet (FIS) established 1988

1. No changes.

E. Long Island Sound Fleet (LIS) established 1937

1. All **boats** in the LIS Fleet shall use the Modern **Rig**.

F. Marblehead Fleet (MHD) established 1938

1. No changes.

G. Nantucket Fleet (NKT) established 1997

1. BOAT OWNERSHIP

- (a) All **boats** in the Nantucket IOD Fleet shall be owned by the Nantucket International One Design Fleet Association (NIODFA).

2. RIGGING & EQUIPMENT

- (a) The **boats** shall be sailed as provided by the NIODFA. Modifying the **boats**, altering, removing or adding any equipment or **rigging**, other than as provided for herein or in the *Sailing Instructions* is prohibited.
- (b) Permitted Supplemental **Equipment** & Modifications:
 - (i) Non-permanent lines or devices are permitted unless otherwise prohibited, provided that they are removed following each day of racing. Examples include wind indicators (telltales), removable non-residue tape, personal flotation devices, other personal or safety gear, tools, spare winch handles, spare hiking sticks, fenders, docking lines, towing lines.

International One Design Class Rules

- (ii) Temporary marks may be made only with pencils, washable markers or grease pencils, provided that such marks shall be completely removed after each day, leaving no trace.
 - (iii) Modifications are permitted for emergency repairs.
 - (c) No adjustments may be made to the **standing rigging**, except that the jumper **stays** and **backstay** may be adjusted within normal tolerances. Movement of the **mast** in the **step** or at the **partners** is not permitted.
 - (d) **Running rigging** shall be used as supplied and intended. No purchase may be added to existing **rigging**.
 - (e) **Equipment** supplied with the **boats** shall remain aboard at all times, unless removed for repair or replacement.
 - (f) The **hulls** may not be scrubbed, washed, wet-sanded or otherwise treated below the **waterline** except as designated by the Chief Technical Officer.
- H. Northeast Harbor Fleet (NEH) established 1938
- 1. **Masts** and **booms** in the NEH Fleet shall be made of wood to NEH's Wood Spar Plan.
- I. Oslo Inner Fjord Fleet (OIF) established 1939
- 1. **Boats** in the OIF Fleet shall use either the Modern or Classic **Rig**.
- J. Oslo Outer Fjord Fleet (OOF) established 1937
- 1. All **boats** in the OOF Fleet shall use either the Modern or Classic **Rig**.
- K. San Francisco Fleet (SFO) established 1954
- 1. No changes.
- L. Swedish Fleet (SWE) established 1976
- 1. **Boats** in the SWE Fleet shall use either the Modern or Classic **Rig**.

A.17 LIST OF PLANS:

- I Rigging Plan, by Bjarne Aas, May, 1936
- II Working Plan, by Bjarne Aas, June, 1936 edited by R. Meslie, Oct 1, 1963
- III Long Cabin, by Bjarne Aas, June 1936
- IV Fiberglass, by Henrik Aas, September, 1972
- V Sail Plan, by Bjarne Aas, 1936
- VI Lines, by Bjarne Aas, June, 1936
- VII Diagonal Scheme, by Bjarne Aas, July, 1936
- VIII Table of Offsets, by Bjarne Aas, July, 1936
- IX Lead Keel, by Bjarne Aas, June 23, 1936

International One Design Class Rules

X Rudder, by Bjarne Aas, June, 1936 edited by R.W. Homer, Oct 1, 2001

XI Wooden Spars, by Bjarne Aas, June, 1936

XII Classic Spars, by IOD Class, June, 2011

XIII Modern Spars, by IOD Class, June, 2011

XIV Class Logo & Sail Insignia, January 2014

Section B - Boat Eligibility

For a **boat** to be eligible to *race*, the rules in this section shall be complied with.

B.1 CLASS RULES & CERTIFICATION

B.1.1 The **boat** shall:

- A. be in compliance with the **class rules**.
- B. have a valid hull **certificate**.

International One Design Class Rules

PART II - REQUIREMENTS & LIMITATIONS

The **crew** and the **boat** shall comply with the rules in Part II when *racing*. In case of conflict Section C shall prevail.

Section C - Conditions for Racing

C.1 RULES

C.1.1 The ERS Part I - Use of Equipment shall apply.

C.2 PERSONAL EQUIPMENT

C.2.1 Hatch covers and cabin doors may be removed from the **boat** for *racing*.

C.2.2 Electronic compasses, whether installed or hand held, are prohibited, except that,

A. Electronic compasses may be permitted, if specified in the *Sailing Instructions*.

C.2.3 Performance instruments and systems, whether installed or hand held, are prohibited, except that,

A. Electronic watches and stopwatches are permitted.

C.2.4 Electronic communications systems, whether installed or hand held, are prohibited, except that,

A. VHF radios are permitted for authorized transmissions, if specified in the *Sailing Instructions*.

C.3 PORTABLE EQUIPMENT

C.3.1 **Boats** may install a head.

C.3.2 **Boats** may carry an outboard motor with a maximum **weight** of 77 pounds (35 kg).

A. **Boats** may carry a fuel container whose full **weight** shall not to exceed 66 pounds (30 kg).

C.3.3 All **boats** must comply with the specific safety equipment requirements of the local jurisdiction while *racing*, however, at a minimum each **boat** must carry the following:

1. The **boat** shall be equipped with a **personal flotation device** for each **crew** member to the minimum standard ISO 12402-5 (CE 50 Newtons), or USCG Type III, or AUS PFD 1.
2. Paddle.
3. 2.5 gal bucket.
4. Bilge pump
5. Fog horn.
6. First aid kit.

C.4 RIG

C.4.1 Movement of the **mast** in the step or at the **partners** while *racing* is not permitted.

C.5 SAILS

C.5.1 The **sail** inventory shall comply with the requirements of the LFA sail purchase plan.
(1/1/18)

International One Design Class Rules

C.6 ADVERTISING

C.6.1 Advertising shall only be displayed in accordance with WS Advertising Code (See WS Appendix 1 - Advertising Code Regulation 20)

Section D - Hull

D.1 GENERAL

D.1.1 Hull Construction

- A. Wooden **hulls** shall be in general accordance with Plans I, II, III, VI, VIII, & IX above, as amended by these rules.
- B. Fiberglass **hulls** shall be in general accordance with Plans I, IV, VI, VIII, & IX above, as amended by these rules.
- C. Other methods & materials may be used for construction, provided they are compatible with the weights and measures applicable to these one-design standards and the IOD specifications and approved by the IODWCA in writing.
- D. No material may be added to or removed from **hull** or **deck** other than routine sanding and painting as provided for under D.8 Reconstruction.

D.2 HULL SHELL

D.2.1 Hull Measurement

A. Principal Dimensions

- | | |
|-----------------|-----------------------|
| 1. Length | 33'-5 3/16" (10190mm) |
| 2. LWL | 21'-5" (6528mm) |
| 3. Beam | 6'-9 5/16" (2066mm) |
| 4. Draft | 5'-2" (1575mm) |
| 5. Displacement | 7,200 lbs (3266 kg) |
| 6. Sail Area | 390 sf (36 sqm) |

D.2.2 Fore-Aft Datum

- A. The fore & aft measurement **datum** shall be the plane described as Station 10.
 - 1. On wooden **boats**, Station 10 is the plane defined by the aft edge of the large frame near the front of the cabin house, or the front of the cabin house, if aligned with the aft edge of that station frame.
 - 2. On fiberglass **boats**, Station 10 is the plane perpendicular to the **centerline** a distance from the **transom** either the fixed distance of 20'-2 1/2" (6160mm) forward of the **transom**, or 60.4% of the overall length of the **boat** from the **transom**.
 - 3. If it can be shown that Station 10 is located in some other plane, by laser measurement or other similar means, and accepted by the Class Measurer, then that **datum point** should be marked accordingly.

International One Design Class Rules

D.2.3 Methodology

- A. Station Interval is 1'-11 5/8" (600mm).
- B. Establish the following fore/aft reference points by locating points permanently at 3" (76mm) from edge of deck, 3" (76mm) below **shear** and approximately 3" (76mm) above **waterline**, This can be done with screws in wooden boats or dimples in fiberglass boats.
 - (a) Station 2
 - (b) Station 10
 - (c) Station 14
- C. Level **boat** athwartships
- D. Level **boat** fore/aft so that,
 - 1. The difference between the **shear** heights at Station 2 and Station 14 is 7" (179mm).
 - 2. The difference in height along the **centerline** between the **bow** and **transom** is 10 1/8" (256mm).
- E. Stations shall conform to Plan VII, but tolerances shall not exceed the following at each station:

Station 2	± 1/2" (13mm)
Station 4	± 5/8" (16mm)
Station 6	± 5/8" (16mm)
Station 8	± 3/4" (19mm)
Station 10	± 5/8" (16mm)
Station 12	± 5/8" (16mm)
Station 14	± 1/2" (13mm)

D.2.4 Hull Weight

- A. The **weight** of a **boat** fully rigged is 7,120 lbs (3230 kg), plus or minus two (±2%) percent.
- B. The **hull shell weight** is 2,800 lbs (1270 kg), plus or minus two (± 2%) percent.
- C. Corrector weights
 - 1. **Corrector weights** shall be permanently fixed in place.
 - 2. A maximum of 200 lbs (90.72 kg) may be added between the lifting eye and the front of the **mast step**.
 - 3. The remaining **corrector weight** must be distributed evenly throughout the boat as directed by the technical committee or as follows: 1/3 aft of Station 3, 1/3 between Stations 8 and 10 attached to the cockpit sole or higher and 1/3 forward of Station 14.

D.3 DECK

International One Design Class Rules

D.3.1 General

- A. The **deck** shall be in general accordance with Plans I, II, III or IV.

D.3.2 Material

- A. The **deck** may be rebuilt in 5/8" (16mm) T&G pine or in 1/2" (13mm) marine plywood with a minimum weight of 1.56 lbs./sq. ft.
 - 1. Additionally, a wood **deck** may be fiber-glassed.
- B. The **deck** may be foam-cored fiberglass built to the class-approved laminate schedule.

D.3.3 Partners

- A. The **forward limit** of the **partner opening** can be no further forward than 18" (457mm) in front of Station 10.
- B. The **aft limit** of the **partner opening** can be no further aft than 9" (229mm) in front of Station 10.

D.3.4 Headstay

- A. The **headstay point** shall be a maximum of 9'-7 3/4" (2940mm) forward of Station 10.

D.3.5 Backstay

- A. The **backstay point** shall be a maximum of 18'-9" (5715mm) aft of Station 10.

D.3.6 Chain Plates

- A. The chain plates shall be of optional design.
- B. On wooden boats there shall be a minimum of three tabs at each side.

D.4 CABIN

D.4.1 General

- A. **Boats** may use either the original long cabin or short cabin.
 - 1. The short cabin shall be in general accordance with Plans II or IV.
 - 2. The long cabin shall be in general accordance with Plans I or III.

D.4.2 Dimensions

A. Cabin Length

- 1. Short Cabins: The length of the cabin is 4'-1 1/2" (1257mm).
- 2. The forward face of the **bulkhead** on Plan II is at Station 8, two rib positions forward of the original 1936 design. Shortening of the cabin beyond this point is not allowed.
- 3. Long Cabins: The length of the cabin is 5'-5 1/4" (1657mm).

B. Cabin Width

International One Design Class Rules

1. Forward end

- (a) The forward end of the cabin is 2'-6" (762mm) wide.

2. Aft end

- (a) Short Cabins: The aft end of the cabin is 4'-1 1/2" (1257mm) wide.
- (b) Long Cabins: The aft end of the cabin is 4'-2 3/4" (1289mm) wide.

C. Cabin Height

- 1. The height of the cabin front at **centerline** is 7 3/4" (197mm).

D. Cabin Hatch

- 1. The dimensions of the cabin top hatch opening are 20" (508mm) wide and 23" (584mm) long plus or minus 4" (100mm).

D.4.3 Materials

- A. The cabin roof shall be a minimum of 1/2" (13mm) T&G white pine or not less than 3/8" (10mm) marine plywood.
- B. The cabin **bulkhead** may be moved or replaced with 5/8" (16mm) teak or mahogany or 1/2" (13mm) marine plywood.
- C. Cabins may be built in fiberglass according to the class-approved laminate schedule.

D.4.4 Seats

- A. Cabin seats or bunks may be of optional design but must exist in approximately the locations shown on the Plans II, III or IV.
- B. Total seating surface area must be at least 8 sq ft (.74sm).

D.5 COCKPIT

D.5.1 General

- A. The cockpit shall be in general accordance with Plans II, III or IV.

D.5.2 Dimensions

- A. Short Cabins: The cockpit length is 8'-6" (2591mm).
- B. Long Cabins: The cockpit length is 7'-2 1/4" (2191mm).

D.5.3 Seats

- A. Cockpit seats may be of optional design but must exist.
- B. Total potential seating area between the cockpit coamings must be at least 300 sq in (.194 sq m).
- C. Design thickness of the surface is 19/32" (15mm).
- D. Minimum thickness should be maintained at not less than 1/2" (13mm).

International One Design Class Rules

D.5.4 Coamings

A. Thickness

1. Cockpit Coamings have a design thickness of $11/16''$ (17mm).
2. Coamings may be rebuilt with not less than $5/8''$ (16mm) mahogany or teak.

B. Length

1. Short Cabins: The length of the coamings from the cabin bulkhead @ Station 8 is 13'-1" (3988mm).
2. Long Cabins: The length of the coamings from the cabin bulkhead is 11'-9 $\frac{1}{4}''$ (3588mm).

C. Height

1. Minimum coaming heights above the deck on all boats are as follows:
 - (a) 6" (152mm) at the cabin bulkhead.
 - (b) 4 $\frac{1}{2}''$ (114mm) at the midpoint
 - (c) 3" (76mm) at the after end of the cockpit.

D.6 BULKHEADS

- D.6.1 The cabin **bulkhead** may be moved or replaced with $5/8''$ (16mm) teak or mahogany or $\frac{1}{2}''$ (13mm) marine plywood.
- D.6.2 The **bulkhead** on Plan II is two rib positions forward of the original 1936 design Plan III. Shortening of the cabin beyond this point is not allowed.

D.7 MAST STEP

- D.7.1 The **forward limit** of the **mast** butt is 1'-7 $\frac{1}{2}''$ (457mm) forward of Station 10.
- D.7.2 The **aft limit** of the **mast** butt is 10 $\frac{1}{2}''$ (229mm) forward of Station 10.
- D.7.3 The **mast** step may be level up to the design **waterline**.

D.8 RECONSTRUCTION

- D.8.1 Any reconstruction shall maintain the weight and balance of the original **boats**. Efforts to alter the performance characteristics of the **boats** by altering the weight distribution of the original design is not allowed.
- D.8.2 The cabin **bulkhead** may be moved or replaced with $5/8''$ (16mm) teak or mahogany or $\frac{1}{2}''$ (13mm) marine plywood. The **bulkhead** on the Plan II is two rib positions forward of the original 1936 design Plan III. Shortening of the cabin beyond this point is not allowed.
- D.8.3 Fiber-glassing of the **hull** is allowed. Design thickness of the **hull** is $\frac{3}{4}''$ (19mm). Preparation of the wooden surface should involve rough sanding but sandblasting may be utilized, in either case maintain a minimum wood thickness of $5/8''$ (16mm).

Section E - Hull Appendages

International One Design Class Rules

E.1 KEEL

E.1.1 General

A. The keel shall be in accordance with Plans I, II, IV, VI, and X.

E.1.2 Material

A. The keel shall be made of lead.

E.1.3 Weight

A. The lead keel shall weigh 4,100 lbs (1860 kg), plus or minus two ($\pm 2\%$) percent.

E.2 RUDDER, STOCK & TILLER

E.2.1 Rudder

A. General

1. The **rudder** shall be in general accordance with Plans I, II, IV, VI, and VII.
2. At least one 2" (51mm) wide metal strap, approximately mid-way up the **rudder** post, shall be attached to the hull to support the leading edge of the **rudder**.
3. No fairwaters may be installed where the **rudder** meets the hull.
4. The addition of a **rudder** heel pintel is allowed.

B. Material

1. The **rudder** shall be made of either solid mahogany or cored fiberglass.
2. The **rudder** stock shall be 1 1/4" (32mm) dia stainless steel or bronze for wood **rudders** and a min of 1" (25mm) dia for fiberglass **rudders**.

C. Weight

1. The **rudder** including stock shall weigh a minimum of 65 lbs (29.48 kg).

D. Dimensions

1. The leading edge of the **rudder** shall be radiused and have a minimum diameter of 1 1/2" (38mm).
2. The trailing edge of the **rudder** shall be radiused and have a minimum diameter of 1/2" (13mm).

E.2.2 Tiller

A. Tillers are required, but may be of optional design.

Section F - Rig

F.1 GENERAL

A. There are two class-approved **rig** configurations, the Classic **rig** and the Modern **rig**.

International One Design Class Rules

1. The Classic **rig** is the original 1937 configuration. It is a double **spreader** $\frac{3}{4}$ **rig** with an upper diamond and jumpers. Measurement information for this **rig** follows.
 2. The Modern **rig** was developed in the 1970s and is sometimes referred to as the Long Island Sound **rig**. It is a single **spreader** $\frac{7}{8}$ **rig** with jumpers and no upper diamond. Measurement information for the Modern **rig** is found in Section H of these rules.
- B. Unless specified otherwise in A.16 - Local Fleet Rules, all **boats** shall use the Classic **rig**.
- C. **Masts** shall be made of a single material, fasteners, fittings, **corrector weights** and adhesives excluded. Approved materials are wood, aluminum, or carbon fiber.

F.2 MAST

F.2.1 Measurement Points

- A. **Datum** - The **datum point** should be 2'-8 $\frac{7}{8}$ " (835mm) above the **deck** and is limited to plus or minus $\frac{3}{8}$ " (10mm).
1. All vertical **mast** dimensions are measured to this **datum point**.
 2. The **datum point** shall be permanently etched into the surface of the **mast**.
- B. **Top Point** - The **top point** shall be a maximum of 39'-5" (12014mm), above the **datum**.
- C. **Heel Point** - The **heel point** can vary but shall be a minimum of 5'-2" (1575mm) below the **datum**.
- D. **The upper limit point** shall be 38'-10" (11836mm), above the **datum**.
- E. **The lower limit point** is the **datum**.
- F. Mast Bands
1. The distance between the **lower mast band** and the **upper mast band** shall not exceed 38'-10" (11836mm).

F.2.2 Weight

- A. The **mast weight** shall be a minimum of 200 lbs (90.7kg).
- B. The **mast center of gravity** shall be a minimum of 14'-4 $\frac{1}{8}$ " (4372mm) above the **datum point**.

F.2.3 Section

A. Fore-aft dimension

1. The typical **fore-aft dimension** of the **mast section** shall be a minimum of 5 $\frac{5}{8}$ " (143mm) and a maximum of 6 $\frac{1}{4}$ " (159mm).
2. The **fore-aft dimension** of the **mast section** at the top of the **taper** shall be a minimum of 3 $\frac{7}{8}$ " (98mm) and a maximum of 4 $\frac{1}{8}$ " (105mm).
3. The **fore-aft dimension** of the **mast section** at the top of the **taper** on wood **masts** shall be a minimum of 4 $\frac{3}{8}$ " (111mm).

B. Transverse dimension

International One Design Class Rules

1. The typical transverse dimension of the **mast section** shall be a minimum of 3 7/8" (98mm) and a maximum of 4 1/8" (105mm).
2. The transverse dimension of the **mast section** at the top of the **taper** shall be a minimum of 3 7/8" (98mm).
3. The transverse dimension of the **mast section** at the top of the taper on wood **masts** shall be 2 1/4" (57mm).

F.2.4 Taper

A. The **mast taper** shall not begin below the **forestay height**.

B. Wood **masts** shall conform to the Plan IX Wooden **Spars**.

1. **Taper** begins at 9'-4 13/16" (2865mm) above **mast datum**.

F.2.5 Spreaders

A. Lower spreaders

1. The **lower spreader length** is 3'-4" (1016mm) with a minimum of 3'-3" (991mm) and a maximum of 3'-5" (1041mm).
2. The **lower spreader height** is 13'-6 9/16" (4129mm) with a minimum of 13'-6 1/16" (4116mm) and a maximum of 14'-0 1/16" (4269mm).

B. Diamond spreaders

1. The **diamond spreader length** is 2'-4" (711mm) with a minimum of 2'-0" (610mm) and a maximum of 2'-5" (737mm).
2. The **diamond spreader height** is 27'-2 3/4" (8300mm) with a minimum of 26'-10 5/16" (8186mm) and a maximum of 27'-3 5/16" (8313mm).

C. Jumper spreader

1. The **jumper spreader length** is 2'-0" (610mm) with a minimum of 1'-11" (584mm) and a maximum of 2'-1" (635mm).
2. The **jumper spreader separation** is 2'-0" (610mm) with a minimum of 2'-0" (61mm) and a maximum of 2'-6" (762mm).
3. The **jumper spreader height** is 27'-7 3/4" (8426mm) with a minimum of 27'-7 1/4" (8413mm) and a maximum of 28'-1 11/16" (8578mm).

F.2.6 Mast Crane

A. The **mast crane** length is 6" (152mm) with a minimum of 6" (152mm) and a maximum of 8" (203mm).

F.2.7 Halyards

A. Main Halyard

1. The maximum **main halyard height** shall be 38'-5" (11709mm).

B. Jib Halyard

International One Design Class Rules

1. The **jib halyard height** shall be less than the **forestay height**.

C. Spinnaker Halyard

1. The **spinnaker halyard height** is 27'-6 ¼" (8388mm) with a minimum of 26'-10 ¼" (8185mm) and a maximum of 27'-6 ¼" (8388mm).

F.3 BOOM

F.3.1 General

- A. The **boom** shall be made of a single material, fasteners, fittings, **corrector weights** and adhesives excluded. Approved materials are wood, aluminum, and carbon fiber.

F.3.2 Measurement Points

- A. The **outer point** distance shall be a max of 16'-2" (4928mm).

F.3.3 Weight

- A. The minimum **boom weight** shall be 40 lbs (18.1kg).
- B. The **center of gravity** of the **boom** shall be a minimum of 8'-0" (2438mm) from the aft edge of the **mast**.

F.3.4 Section

- A. The minimum vertical dimension of the **boom section** shall be 4 ½" (114mm).
- B. The minimum transverse dimension of the **boom section** shall be 2 ¾" (70mm).

F.4 SPINNAKER POLE

F.4.1 Spinnaker Pole - General

- A. The **spinnaker pole** shall be made of a single material, fasteners, fittings, **corrector weights** and adhesives excluded. Approved materials are wood aluminum, and carbon fiber.

F.4.2 Length

- A. The maximum **spinnaker pole length** shall be 8'-5" (2565mm).

F.4.3 Weight

- A. The minimum **spinnaker pole weight** shall be 8 lbs (3.6kg).
- B. The **center of gravity** of the **spinnaker pole** shall be approximately equidistant from each end.

F.4.4 Section

- A. The minimum cross-sectional dimension of the **spinnaker pole** shall be 2 ¼" (57mm).

F.5 STANDING RIGGING

F.5.1 General

- A. The measurement information that follows is for **boats** rigged with Classic **spars**.

International One Design Class Rules

B. The rules governing sails for Modern **spars** are found in Section G of the Appendix of these rules.

C. Rod **rigging** is not allowed.

F.5.2 Forestay

A. The **forestay height** is 26'-7 1/2" (8116mm) with a minimum of 26'-6 1/16" (8078mm) and a maximum of 27'-5 1/2" (8370mm).

B. The **forestay** shall be 3/16" dia 1x19 or 7x19 stainless steel wire.

C. Pennants may be 1/4" dia 7x19 stainless steel wire.

F.5.3 Backstay

A. The **backstay height** is 39'-1 7/16" (11924mm) with a minimum of 39'-1 3/16" (11918mm) and a maximum of 39'-3 3/16" (11968mm).

B. The **backstay** shall be 5/32" dia 1x19 or 7x19 stainless steel wire.

C. Pennants may be 5/32" dia 7x19 stainless steel wire.

F.5.4 Upper shrouds

A. The **upper shroud height** is 27'-1 13/16" (8276mm) with a minimum of 26'-10 1/16" (8180mm) and a maximum of 27'-6 1/16" (8384mm).

B. **Upper shrouds** shall be 3/16" dia 1x19 stainless steel wire.

F.5.5 Lower shrouds

A. The **lower shroud height** is 13'-6 9/16" (4129mm) with a minimum of 13'-0 15/16" (3986mm) and a maximum of 13'-8 7/16" (4177mm).

B. **Lower shrouds** shall be 3/16" dia 1x19 stainless steel wire.

F.5.6 Diamond shrouds

A. The **diamond shroud top height** is 38'-4 15/16" (11708mm) with a minimum of 38'-4 1/16" (11686mm) and a maximum of 38'-11 1/16" (11864mm).

B. The **diamond shroud bottom height** is 13'-8 15/16" (4189mm) with a minimum of 13'-8 3/16" (4170mm) and a maximum of 14'-6 3/16" (5339mm).

C. **Diamond shrouds** shall be 1/8" dia 1x19 stainless steel wire.

F.5.7 Jumper shrouds

A. The **jumper shroud top height** is 39'-1 1/8" (11916mm) with a minimum of 38'-5 1/8" (11713mm) and a maximum of 39'-1 1/8" (11916mm).

B. The **jumper shroud bottom height** is 16'-1 15/15" (4926mm) with a minimum of 16'-1 3/16" (4907mm) and a maximum of 17'-6 3/16" (5339mm).

C. **Jumper shrouds** shall be 1/8" dia 1x19 stainless steel wire.

F.6 RUNNING RIGGING

International One Design Class Rules

F.6.1 General

- A. In order to stimulate individual initiative and to improve control, unless specifically prohibited, nothing in these rules should limit the creativity or design of the **running rigging, fittings, controls or equipment**.

F.6.2 Jib Sheeting

- A. Other than the **spinnaker pole**, no device or method may be employed to lead a **sheet** outside of the **chain plates**.

Section G - Sails

G.1 MAINSAIL

G.1.1 Dimensions

- A. The distance between the forward head point and the aft head point shall not exceed 6 11/16" (170mm).
 - 1. The length of the **leech** measured between the forward head point and the clew point shall not exceed 41'-6" (12,650mm).
 - (a) The **mainsail** shall have 4 battens that divide the **leech** into 5 nearly equal parts.
 - 2. The **mainsail** shall attach to the **mast** by a boltrope.
 - 3. Boltropes shall not be cut away from the head or tack points by more than 2'-5 1/2" (750mm).

G.1.2 Mainsail Girths

- A. The closest point of the **luff** of the **mainsail** shall not exceed:
 - 1. 5'-5 15/16" (1675mm) from a point on the **leech** 10'-4 13/16" (3170mm) below the **forward head point**.
 - 2. 9'-9 5/16" (2980mm) from a point on the **leech** 20'-10" (6350mm) below the **forward head point**.
 - 3. 13'-2 11/16" (4030mm) from a point on the **leech** 31'-3 3/16" (9530mm) below the **forward head point**.

G.1.3 Miscellaneous

- A. The **sail** insignia must be displayed on both sides of the **mainsail** at approximately two-thirds the height of the **sail** and may be displayed on both sides of the **spinnaker** in approximately the middle of the **sail**.
- B. In accordance with the ISAF RRS Appendix G, the **sail** insignia shall be at least 1'-7" (483mm) in height and not more than 2'-0" (610mm).
- C. The **boat's** number in its LFA shall be displayed underneath the **sail** insignia on the **main sail** and **spinnaker** in the same size as the **sail** insignia.

G.2 JIB

International One Design Class Rules

G.2.1 Dimensions

- A. The **luff length** measured between the **forward head point** and the **tack point** shall not exceed 25'-7 1/16" (7800mm).
- B. The **leech length** measured between the **forward head point** and the **clew point** shall not exceed 23'-9 13/16" (7260mm).
- C. The **foot length** measured between the **tack point** and the **clew point** shall not exceed 9'-6 3/16" (2900mm).
- D. The distance between the **forward head point** and the **mid-foot point** shall not exceed 25'-2 3/16" (7675mm). **Foot irregularity** shall not exceed 2" (50mm).
- E. The distance between the **forward head point** and the **aft head point** shall not exceed 2" (50mm).

G.2.2 Jib Girths

- A. The closest point of the **luff** of the **jib** shall not exceed:
 - 1. 2'-7 1/8" (790mm) from a point on the **leech** 5'-11 1/4" (1810mm) below the forward **head point**.
 - 2. 4'-9 3/4" (1465mm) from a point on the **leech** 11'-10 1/2" (3620mm) below the forward **head point**.
 - 3. 6'-10 3/4" (2100mm) from a point on the **leech** 17'-6 1/4" (5430mm) below the forward **head point**.

G.2.3 Miscellaneous

- A. The **jib** shall have three battens that divide the **leech** into four nearly equal parts.
- B. The **jib** shall attach to the **forestay** by hanks.

G.3 SPINNAKER

G.3.1 General

- A. The **spinnaker** shall be symmetrical around its **centerline**.

G.3.2 Dimensions

- A. The **luff length** shall not exceed 30'-1 7/16" (9180mm).
- B. The **girth** shall not exceed 20'-0 3/16" (6100mm) at any point.
- C. The distance from the **head point** to the **mid-foot point** shall not exceed 34'-9 11/16" (10610mm).

International One Design Class Rules

PART III - APPENDICES

Section H - Modern Rig

H.1 SPARS

H.1.1 MAST

A. General

1. There are two class-approved **rig** configurations, the Classic **rig** and the Modern **rig**.
 - (a) The Modern **rig** was developed in the 1970s and is sometimes referred to as the Long Island Sound or Bermuda **rig**. It is a single **spreader 7/8 rig** with jumpers and no upper diamond and is described below.
2. **Masts** shall be made of a single material, fasteners, fittings, **corrector weights** and adhesives excluded. Approved materials are wood, aluminum, or carbon fiber.

B. Measurement Points

1. The **datum point** should be 2'-8 7/8" (835mm) above the **deck** and is limited to plus or minus 3/8" (10mm).
 - (a) All vertical **mast** dimensions are measured to this **datum point**.
 - (b) The **datum point** shall be permanently etched into the surface of the **mast**.
2. The **top point** shall be a maximum of 39'-8 7/8" (12114mm), above the **mast datum**.
3. The **heel point** can vary but shall be a minimum of 5'-2" (1575mm) below the **mast datum**.
4. The **upper limit point** shall be 38'-11 5/8" (11878mm), above the **mast datum**.
5. The **lower limit point** is the **mast datum**.
6. Mast Bands
 - (a) The distance between the **lower mast band** and the **upper mast band** shall not exceed 38'-10" (11836mm).
7. Boom Band
 - (a) The distance from the aft face of the **mast** to the inner edge of the **boom band** shall not exceed 16'-2" (4928mm).

C. Weight

1. The **mast weight** shall be a minimum of 200 lbs (90.7kg).
2. The **mast center of gravity** shall be a minimum of 14'-4 1/8" (4372mm) above the **mast datum**.

D. Section

1. Fore-aft dimension

International One Design Class Rules

- (a) The typical fore-aft dimension of the **mast section** is 5 1/4" (133mm).
 - (b) The fore-aft dimension of the **mast section** at the top of the **taper** is 3 1/4" (83mm).
 - 2. Transverse dimension
 - (a) The typical transverse dimension of the **mast section** is 4 1/8" (105mm).
 - (b) The transverse dimension of the **mast section** at the top of the taper is 4 1/8" (105mm).
 - 3. Taper
 - (a) The **mast taper** shall not be longer than 9'-3" (2819mm).
- E. Spreaders
- 1. Lower spreaders
 - (a) The **lower spreader length** is 3'-4" (1016mm) with a minimum of 3'-3" (991mm) and a maximum of 3'-5" (1041mm).
 - (b) The **lower spreader height** is 13'-6 9/16" (4129mm) with a minimum of 13'-6 1/16" (4116mm) and a maximum of 14'-0 1/16" (4269mm).
 - 2. Jumper spreader
 - (a) The **jumper spreader length** is 1'-8 1/4" (515mm).
 - (b) The **jumper spreader** separation is 3'-2" (965mm).
 - (c) The **jumper spreader height** is 30'-8 1/2" (9361mm)di .
 - 3. Mast Crane
 - (a) The **mast crane length** is 5 1/4" (133mm).
- F. Standing Rigging
- 1. Forestay
 - (a) The **forestay height** is 29'-9 7/8" (9090mm).
 - (b) The **forestay** shall be 3/16" dia 1x19 or 7x19 stainless steel wire.
 - (c) Pennants may be 1/4" dia 7x19 stainless steel wire.
 - 2. Backstay
 - (a) The **backstay height** is 39'-7 3/4" (12084mm).
 - (b) The **backstay** shall be 5/32" dia 1x19 or 7x19 stainless steel wire.
 - (c) Pennants may be 5/32" dia 7x19 stainless steel wire.
 - 3. Upper shrouds
 - (a) The **upper shroud height** is 30'-7 3/4" (9340mm).

International One Design Class Rules

(b) **Upper shrouds** shall be 3/16" dia 1x19 stainless steel wire.

4. Lower shrouds

(a) The **lower shroud height** is 15'-5 7/8" (4721mm).

(b) **Lower shrouds** shall be 3/16" dia 1x19 stainless steel wire.

5. Jumper shrouds

(a) The **jumper shroud top height** is 39'-2 3/4" (11956mm).

(b) The **jumper shroud bottom height** is 15'-6 5/8" (4739mm).

(c) **Jumper shrouds** shall be 1/8" dia 1x19 stainless steel wire.

(d) Extension of the **jumper stays** to a control point inside the **cabin** is allowed.

6. Rod **rigging** is not allowed.

G. Halyards

1. Main Halyard

(a) The maximum **main halyard height** shall be 38' - 5" (11709mm).

2. Jib Halyard

(a) The **jib halyard height** shall be less than the **forestay height**.

3. Spinnaker Halyard

(a) The **spinnaker halyard height** is 30'-9 1/4" (9380mm).

H.1.2 Boom

A. General

1. The **boom** shall be made of a single material, fasteners, fittings, **corrector weights** and adhesives excluded. Approved materials are wood aluminum, and carbon fiber.

B. Measurement Points

1. The **outer point** distance shall be a max of 16'-2" (4928mm).

C. Weight

1. The minimum weight of the **boom** shall be 40 lbs (18.1kg).
2. The **center of gravity** of the **boom** shall be a minimum of 8'-0" (2438mm) from the aft edge of the **mast**.

D. Section

1. The minimum vertical dimension of the **boom section** shall be 4 1/2" (114mm).
2. The minimum transverse dimension of the **boom section** shall be 2 3/4" (70mm).

H.1.3 Spinnaker Pole

(1/1/18)

International One Design Class Rules

A. General

1. The **spinnaker pole** shall be made of a single material, fasteners, fittings, **corrector weights** and adhesives excluded. Approved materials are wood aluminum, and carbon fiber.

B. Length

1. The maximum **spinnaker pole length** is 8'-5" (2565mm).

C. Weight

1. The minimum **spinnaker pole weight** shall be 8 lbs (3.6kg).
2. The **center of gravity** of the **spinnaker pole** shall be approximately equidistant from each end.

D. Section

1. The minimum cross-sectional dimension of the **spinnaker pole** shall be 2" (57mm).

H.2 SAILS

H.2.1 Mainsail

- A. The distance between the **forward head point** and the **aft head point** shall not exceed 6 11/16" (170mm).
- B. The **leech length** measured between the **forward head point** and the **clew point** shall not exceed 41'-4" (12,597mm).
- C. The **mainsail** shall have four **battens** that divide the **leech** into five nearly equal parts.
- D. The **mainsail** shall attach to the **mast** by a boltrope.
 1. Boltropes shall not be cut away from the **head** or **tack points** by more than 2'-5 1/2" (750mm).

E. Mainsail Girths

1. The **one quarter girth** shall not exceed 13'-5 1/8" (4092mm).
 2. The **one half girth** shall not exceed 10'-1 3/4" (3092mm).
 3. The **one quarter girth** shall not exceed 5'-10 5/8" (1800mm).
- F. The sail insignia must be displayed on both sides of the **mainsail** at approximately two-thirds the height of the **sail** and may be displayed on both sides of the **spinnaker** in approximately the middle of the **sail**.
1. In accordance with the ISAF RRS Appendix G, the sail insignia shall be at least 1'-7" (483mm) in height and not more than 2'-0" (610mm).
 2. The **boat's** number in its LFA shall be displayed underneath the sail insignia on the **main** and **spinnaker** in the same size as the class insignia.

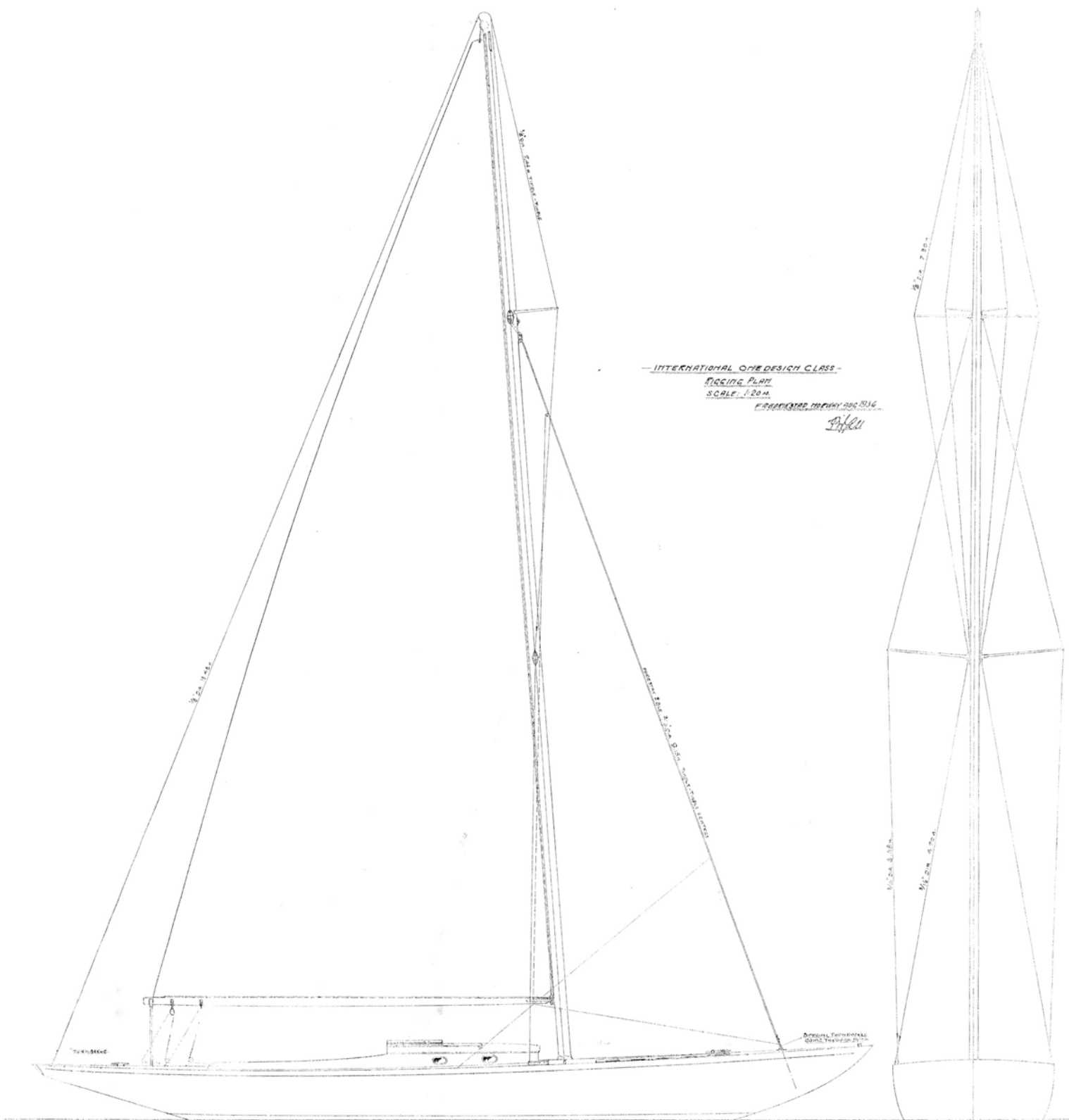
H.2.2 Jib

International One Design Class Rules

- A. The **luff length** measured between the **forward head point** and the **tack point** shall not exceed 29'-3" (8915mm).
- B. The **leech length** measured between the **forward head point** and the **clew point** shall not exceed 27'-6 1/8" (8384mm).
- C. The **foot length** measured between the **tack point** and the **clew point** shall not exceed 9'-3" (2819mm).
- D. **Foot irregularity** shall not exceed 2" (50mm).
- E. The distance between the **forward head point** and the **aft head point** shall not exceed 2" (50mm).
- F. Jib Girths
 - 1. The maximum **one quarter girth** is 6'-9 1/4" (2064mm).
 - 2. The maximum **one half girth** is 4'-8 1/4" (1428mm).
 - 3. The maximum **one quarter girth** is 2'-6 3/4" (780mm).
- G. The **jib** shall have three **battens** that divide the **leech** into four nearly equal parts
- H. The **jib** shall attach to the **forestay** by hanks.

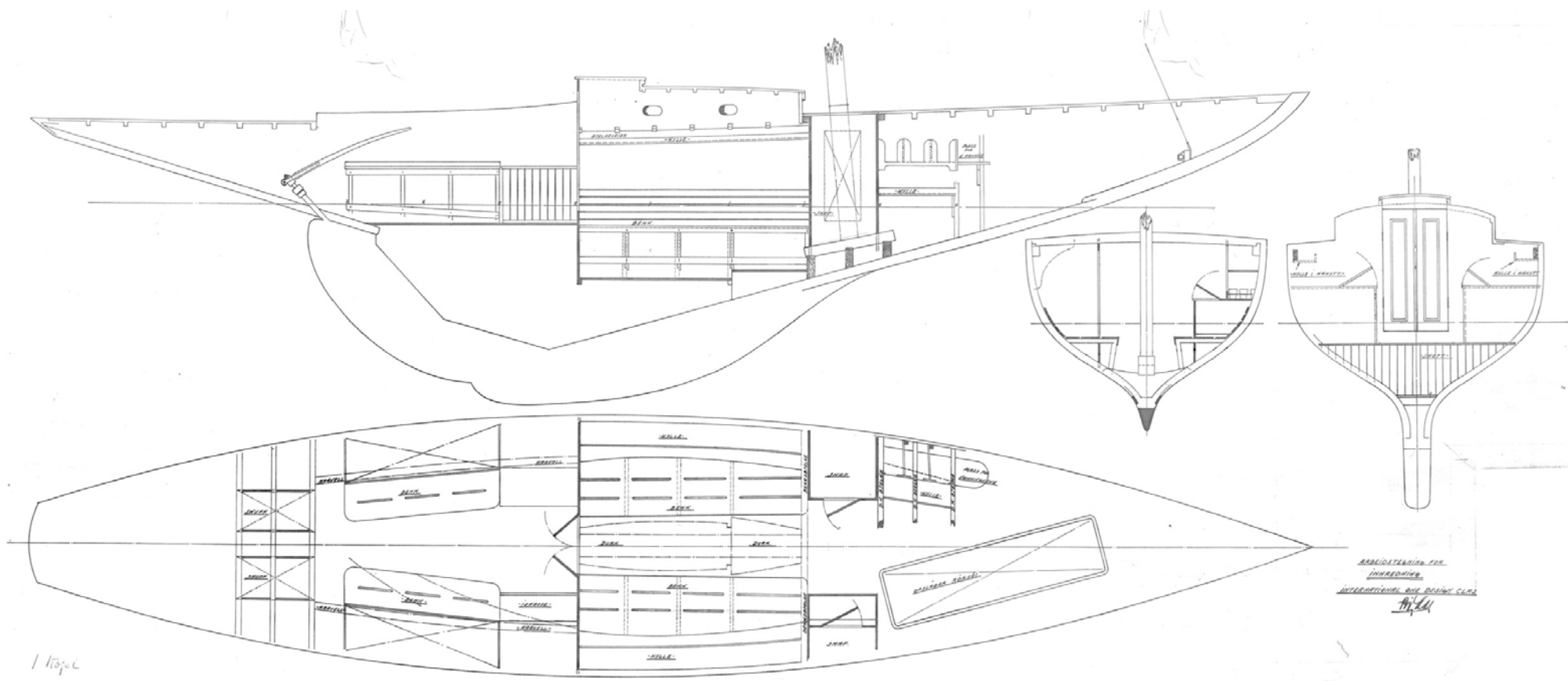
H.2.3 Spinnaker

- A. The **spinnaker** shall be symmetrical around its **centerline**.
- B. The maximum **luff length** is 32'-0" (9754mm).
- C. The maximum **half girth** is 19'-12" (6096mm).
- D. The maximum **foot round** is 9 7/8" (250mm).



Rigging Plan

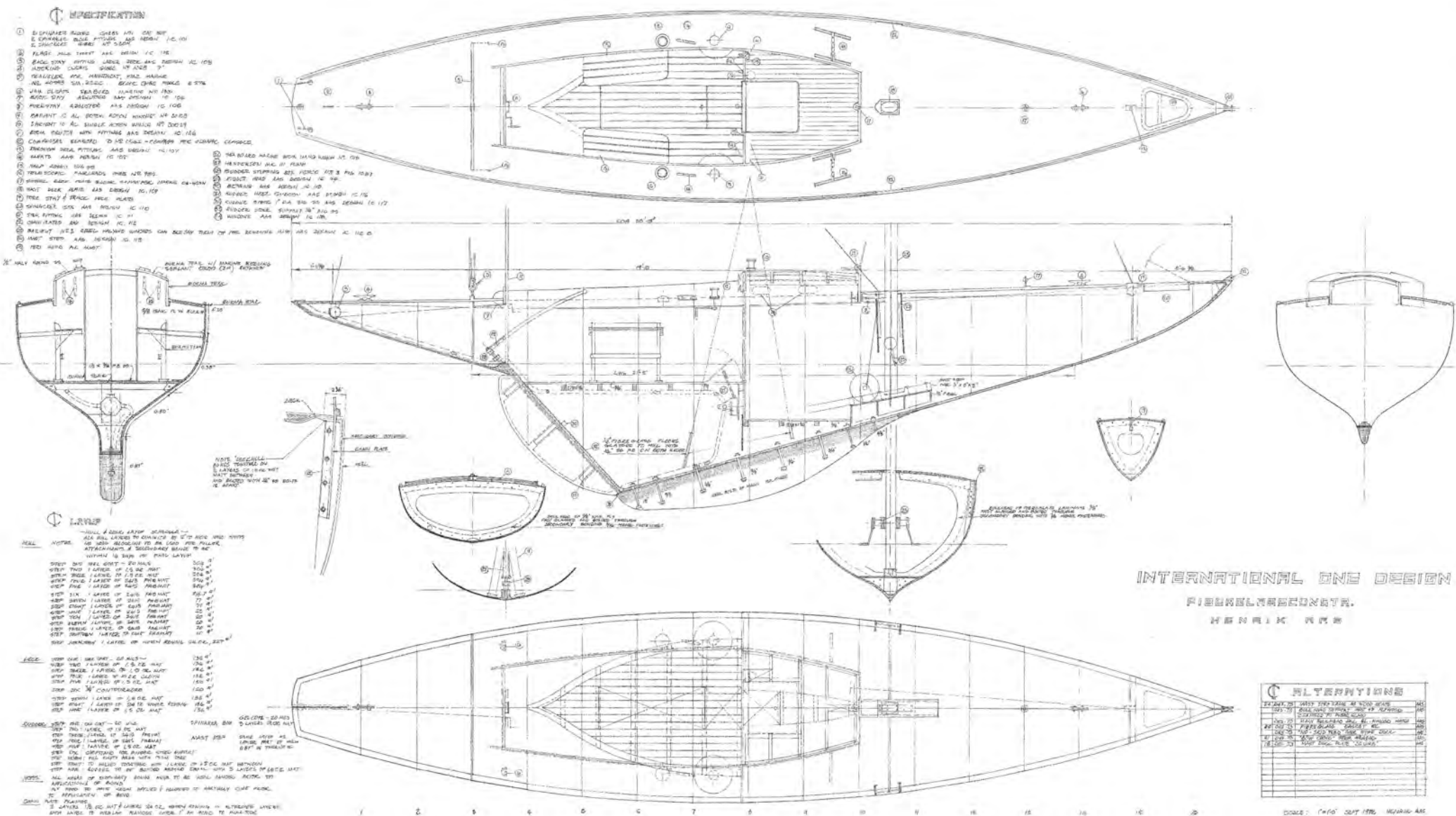
International One Design - Class Rules



Long Cabin

International One Design - Class Rules

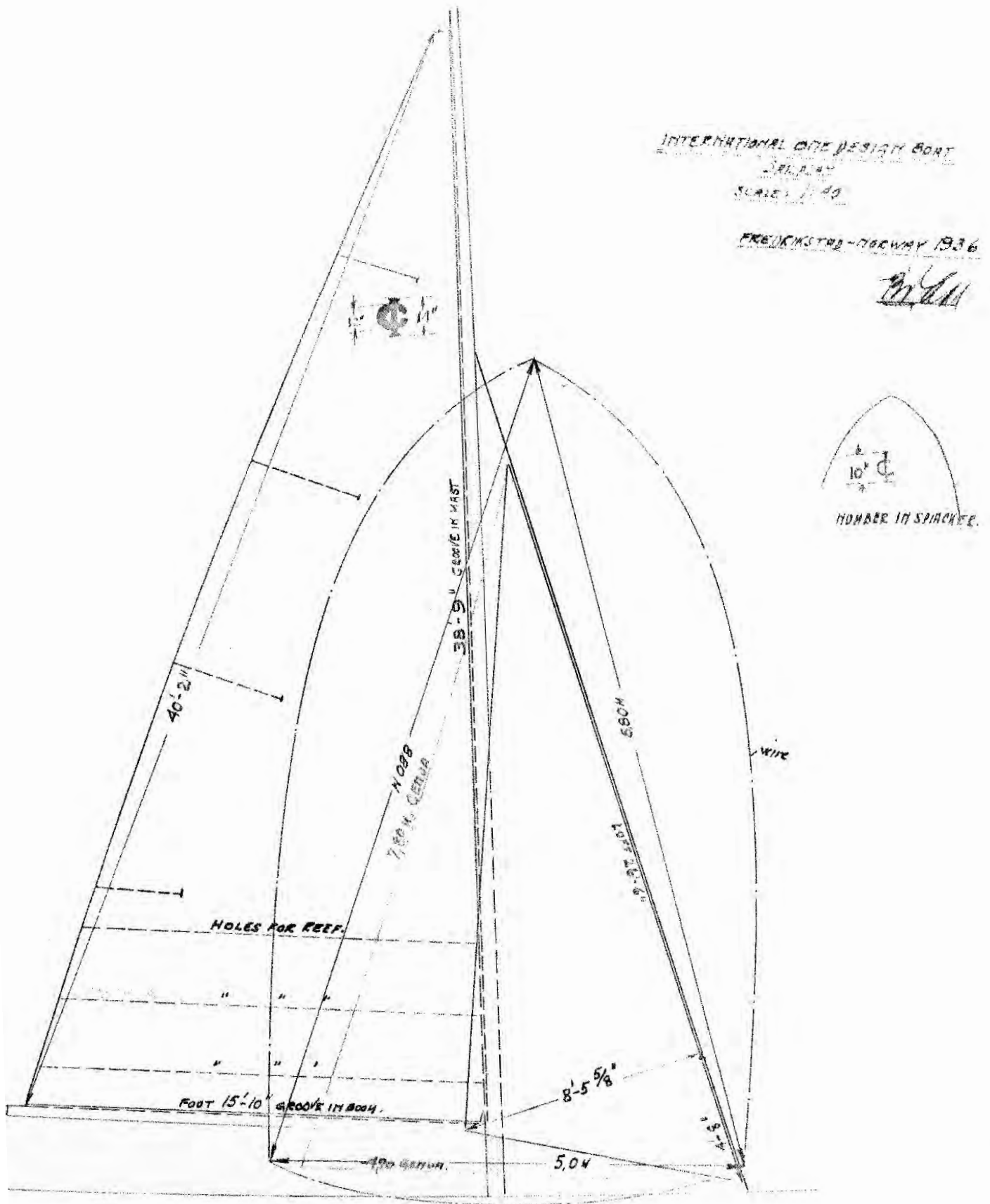




Working Plan - Fiberglass

International One Design - Class Rules

IV

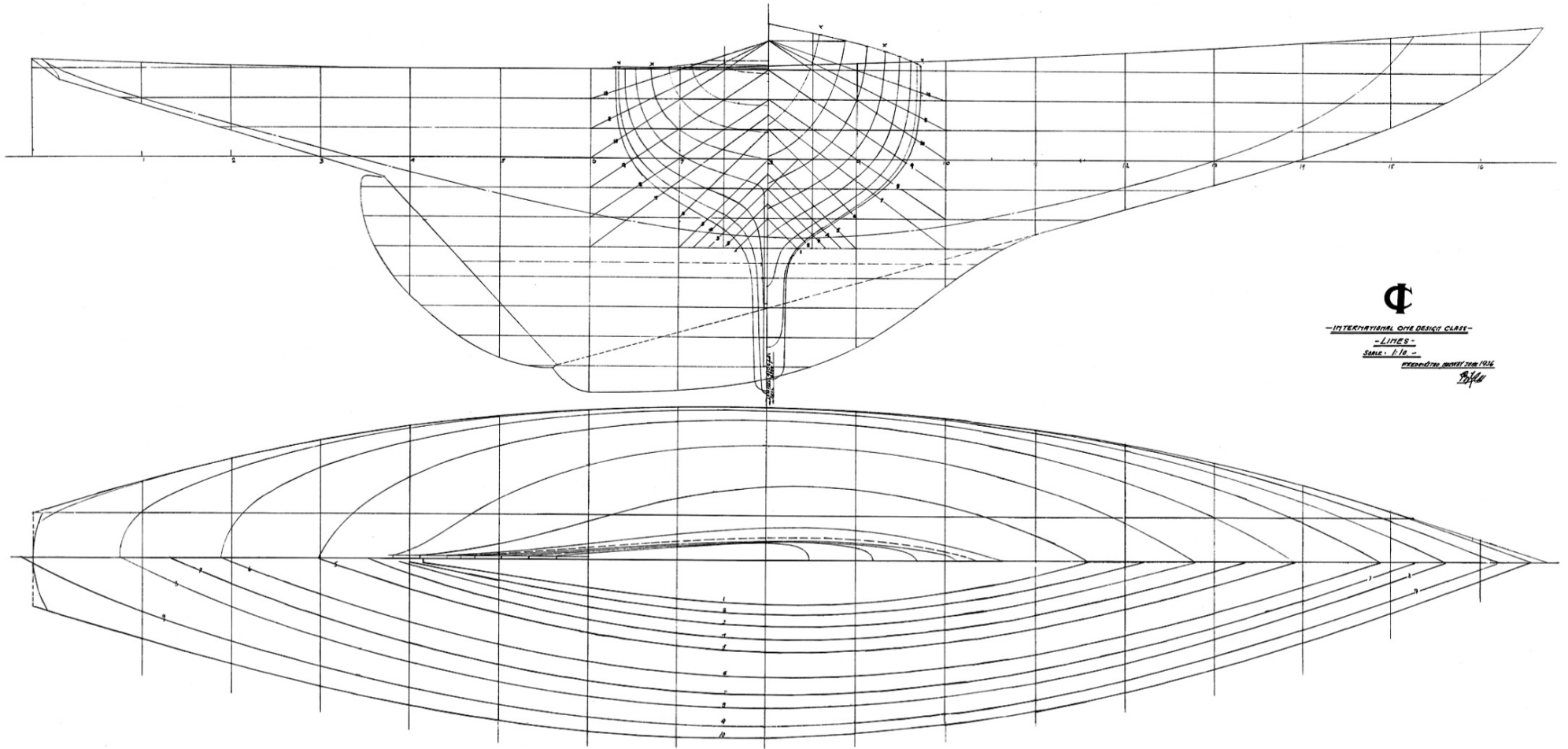



Sail Plan

International One Design - Class Rules

The dimensions shown in this drawing have been changed in the Class Rules. The drawing has been included for general arrangement & historical reference.

V

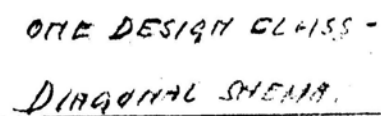



 -INTERNATIONAL ONE DESIGN CLASS-
 -LINES-
 SCALE: 1/16"
 PROPORTION: 100%
 10/10



Lines

International One Design - Class Rules



By Add.



DIAGONALER																																		
PH	SPRM	D. BE.	SPF.	D.XT. TREK	1	2	3	4	5	6	7	8	9	10	11	12	1	2	3	4	5	6	7	SP. I	OF - 32	1	2	3	4	5				
1	635	516	+355									70	364	542	554	545								395						110	a			
2	619	670	+179						27	174	328	560	712	712	705									223						32	145	b		
3	607	795	÷ 3						6	243	389	531	727	861	854	832								+57						69	175	c		
4	601	895	322			25	40	102	205	425	569	697	870	990	970	940								÷100						26	410	105	208	4
5	600	964	975		100	140	195	276	368	575	710	827	981	1090	1060	1020	100	44	28					245	34				32	416	68	138	237	D
6	603	1010		1333	187	243	316	403	490	685	815	921	1062	1158	1116	1067	856	105	67	58	51	42	374	80	47	45	65	95	170	265	E			
7	615	1030		1166	258	323	402	489	575	758	881	978	1108	1193	1142	1087	416	176	108	99	93	86	473	128	93	58	85	122	200	293	F			
8	630	1031		999	296	362	444	531	616	788	904	997	1120	1196	1139	1084	496	219	129	123	118		525	152	125									
9	648	7010		832	286	355	435	521	605	775	888	973	1093	1165	1111	1057	480	205	120	110	89		515	143	114									
10	668	7962		665	215	290	375	462	550	720	830	915	1030	1100	1054	1009	522	108	41				445	63	75									
11	695	892		498	95	180	268	360	448	625	730	815	930	1005	964	924	176						326											
12	725	795		331	30	122	224	316	475	597	682	796	877	845	817								178											
13	760	672	÷164					62	158	340	435	516	634	721	700	681							0											
14	798	521	+17							165	256	335	452	538	525	515							+245											
15	838	350	230								65	132	255	341	333	329							665											
16	882	524	528										45	124																				
F.S.	910	-																																

ONE DESIGN CLASS

JULI 1936

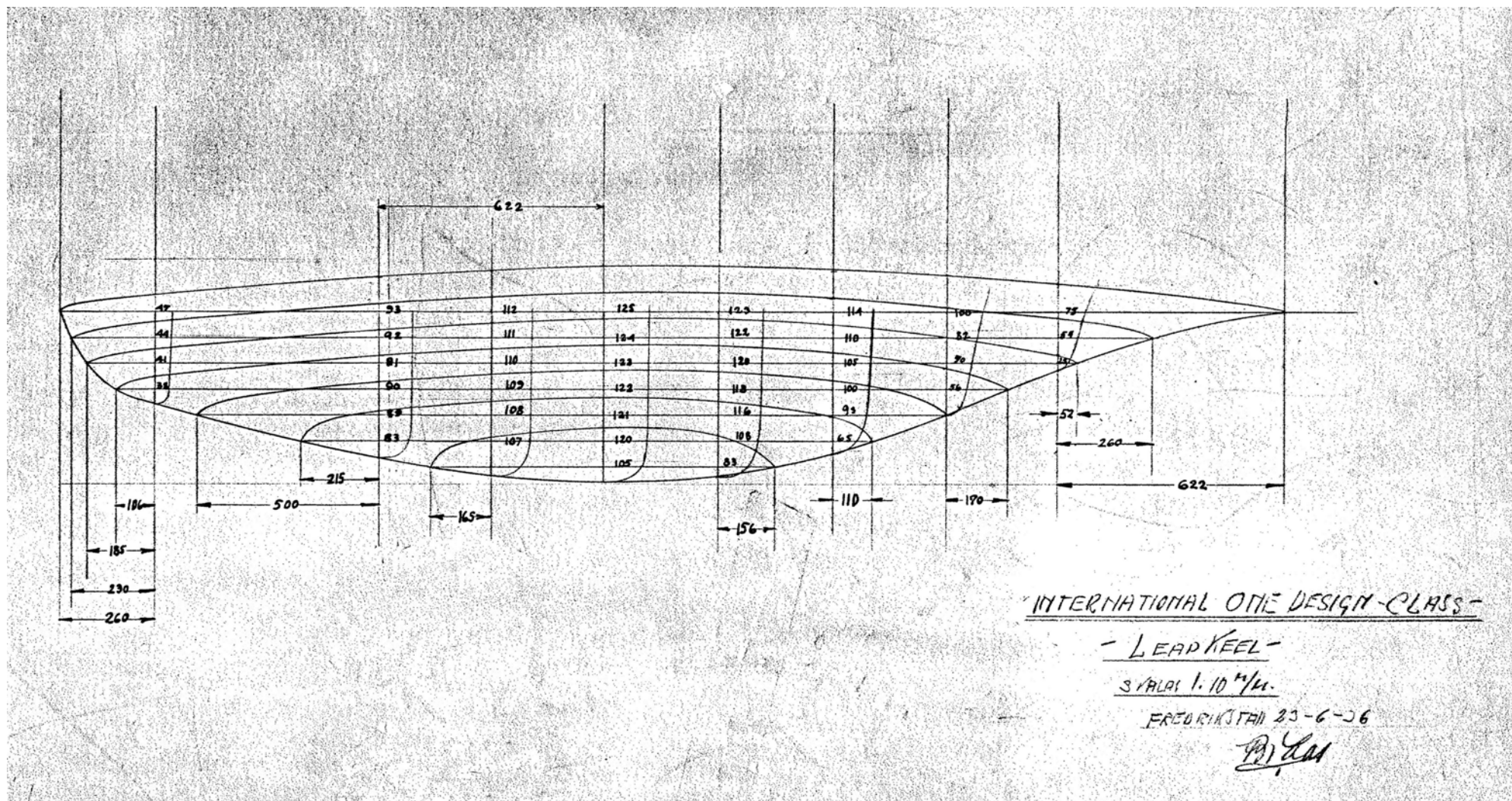
-Bilken



Table of Offsets

International One Design - Class Rules

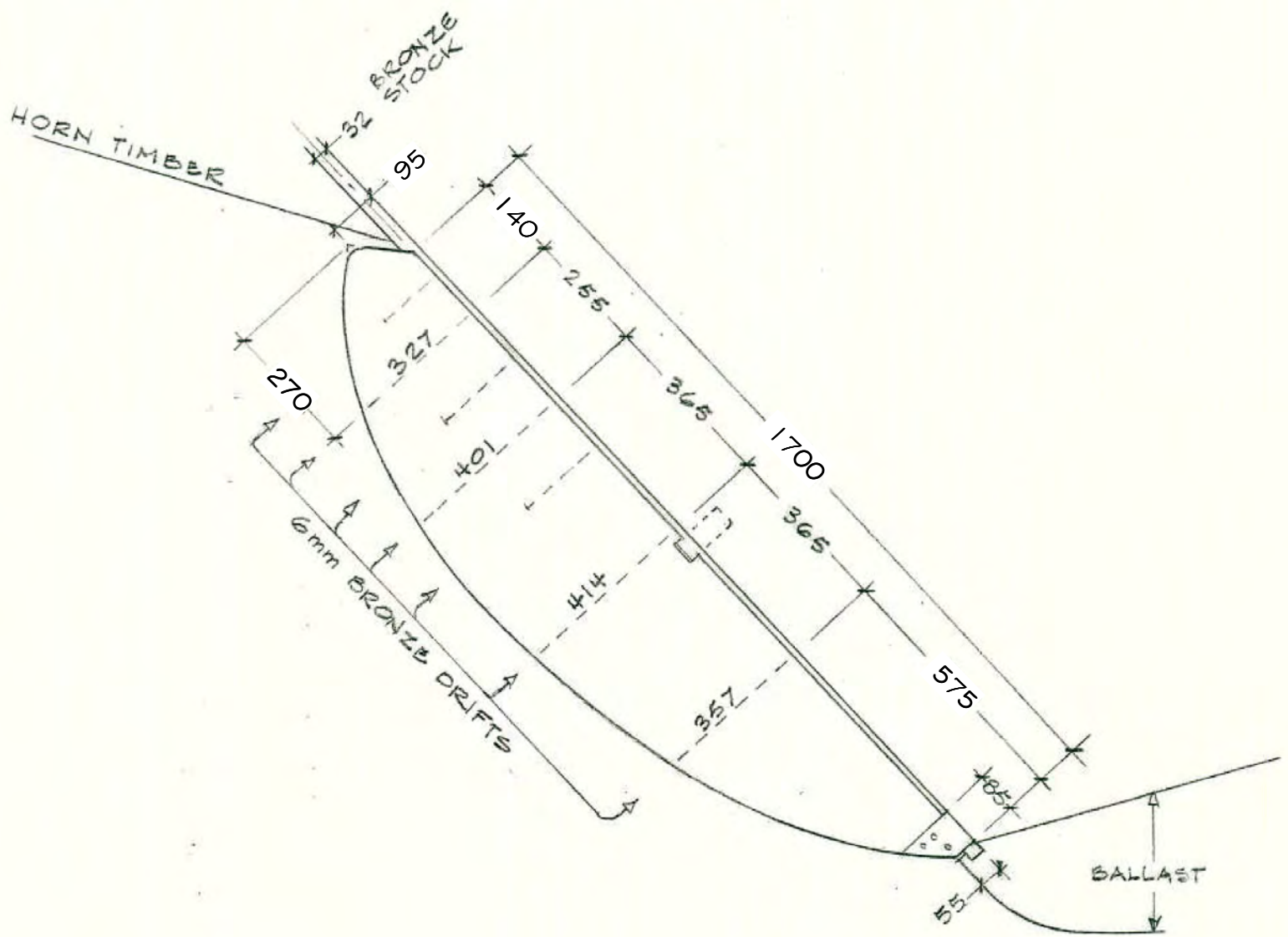
VIII



Lead Keel

International One Design - Class Rules

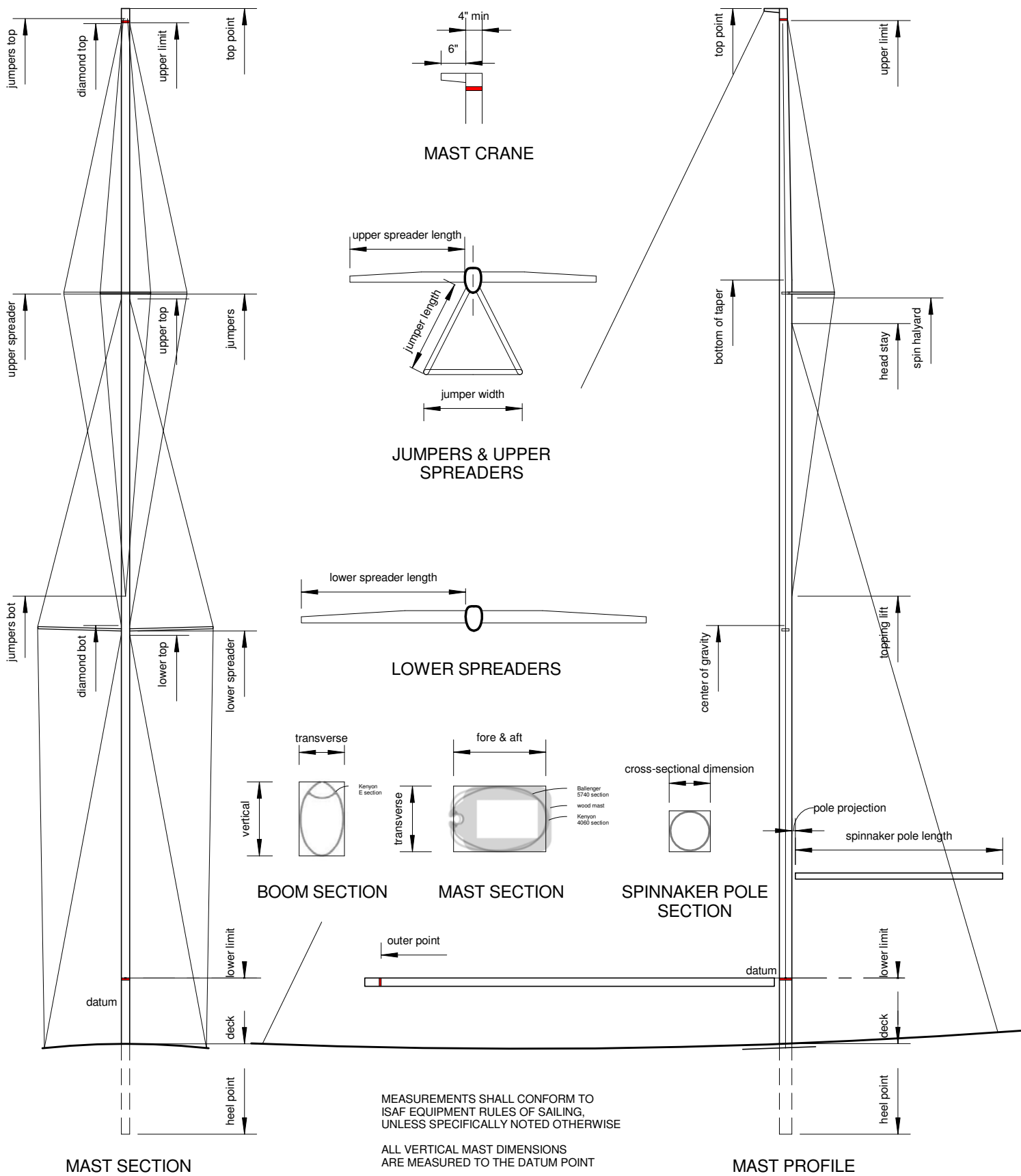
IX

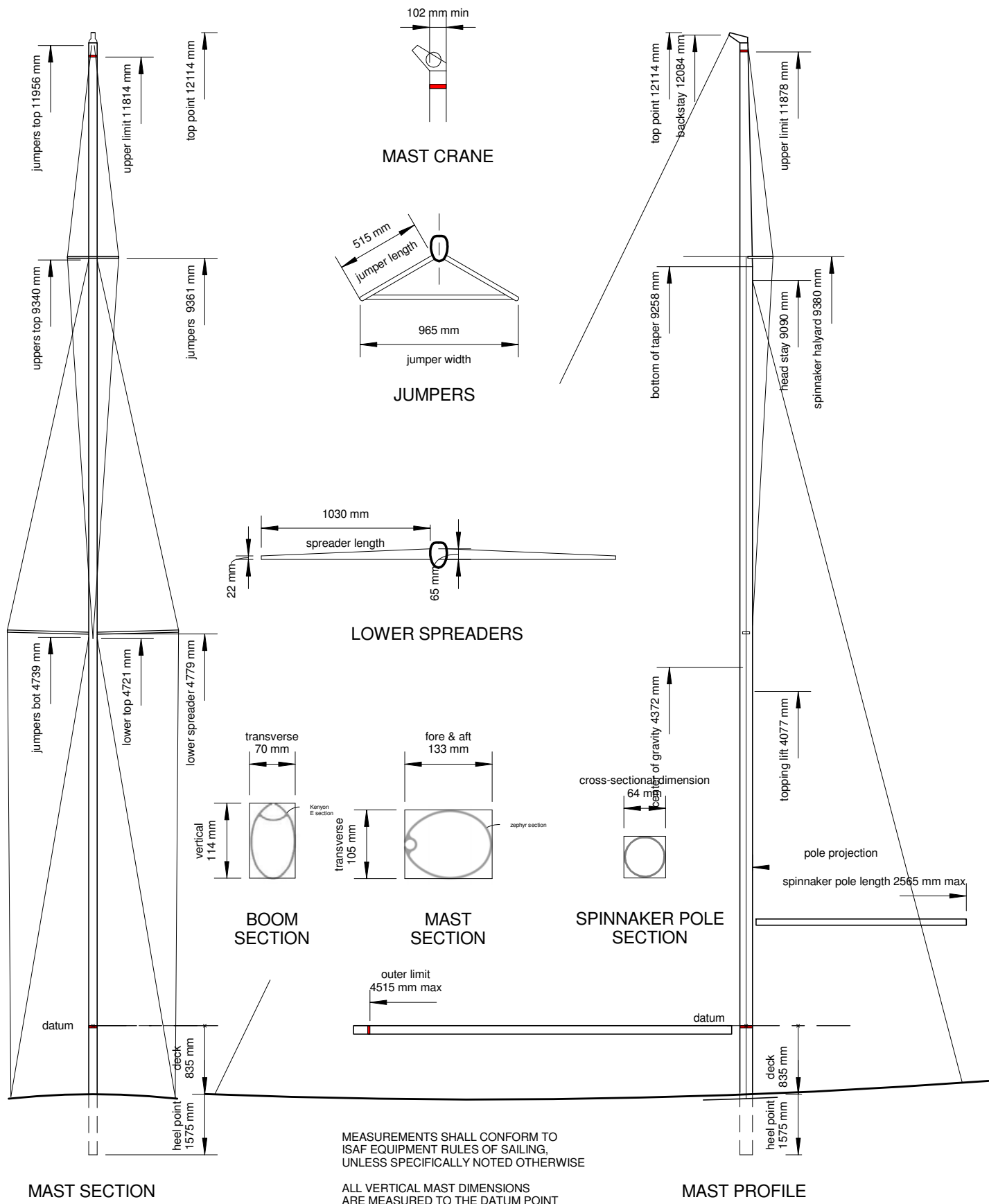


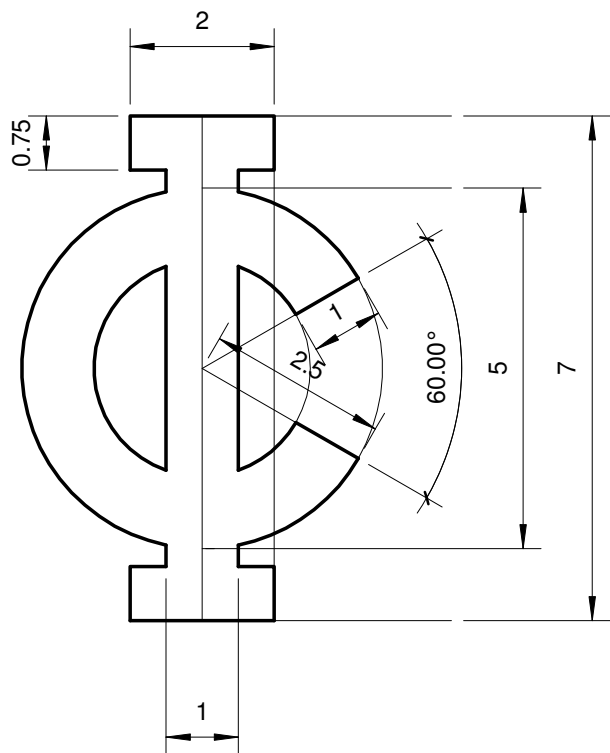
Rudder

International One Design - Class Rules

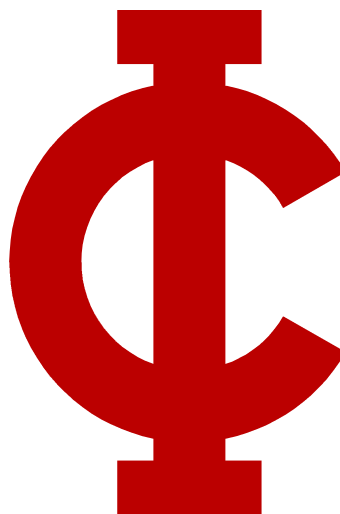
X



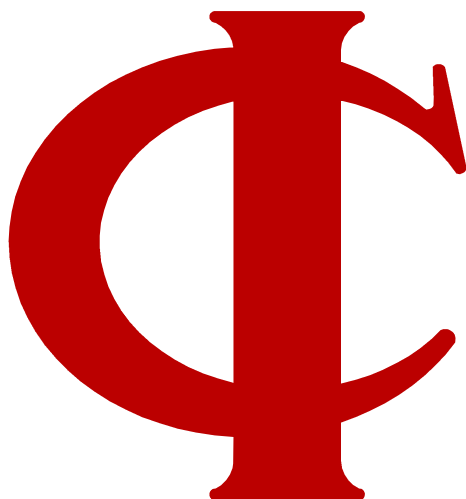




SAIL INSIGNIA



The layout of this sail insignia is intended to standardize the Class symbol which has varied considerably over time. This design is based on the earliest insignias from the original Long Island Sound Fleet.



LOGO

This logo was used by Bjarne Aas on the original design drawings for the Class



Sail Insignia & Class Logo

International One Design - Class Rules