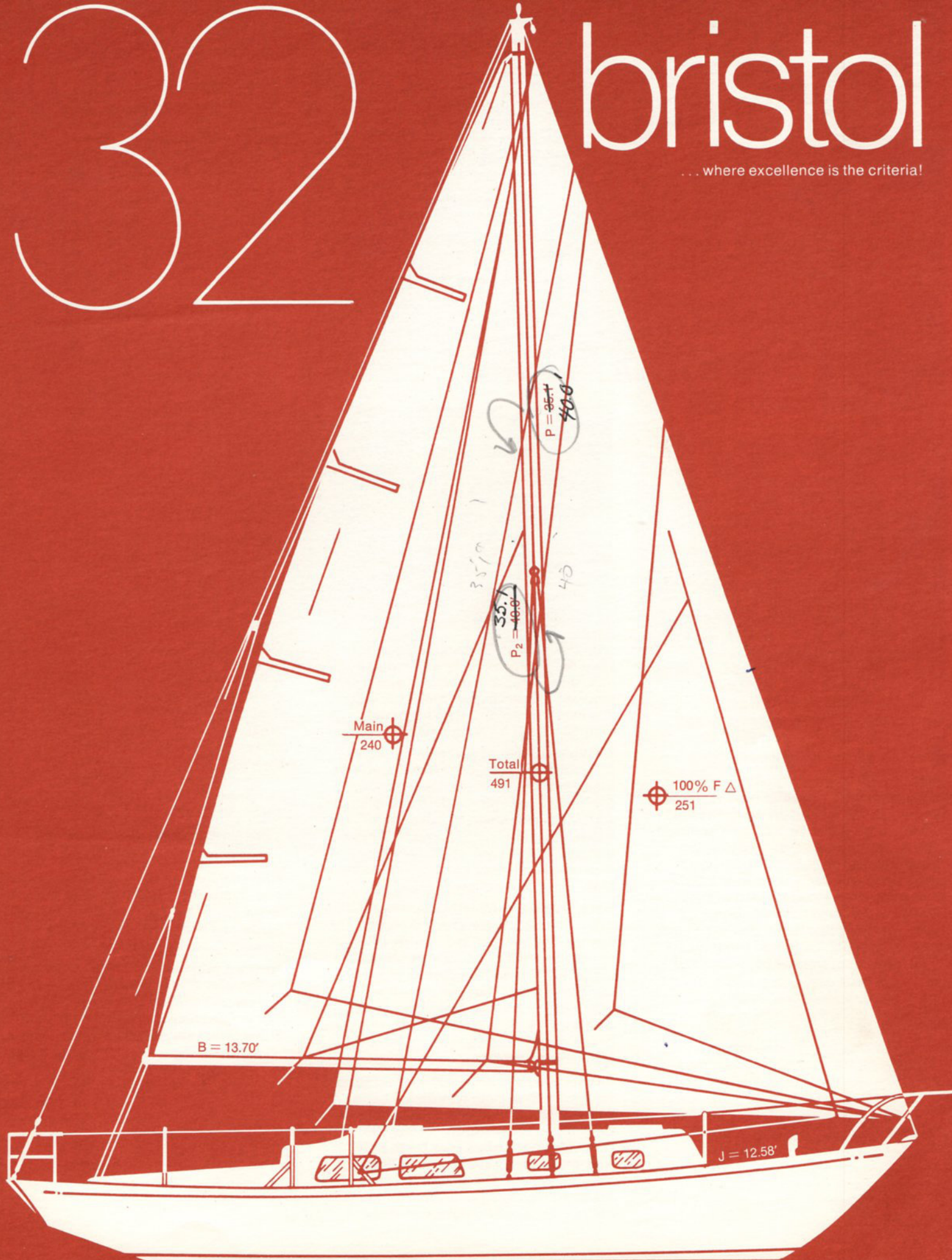


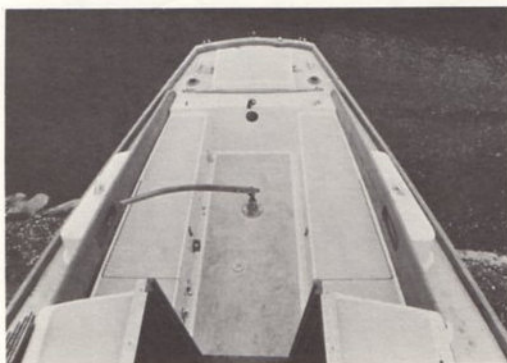
# 32

# bristol

... where excellence is the criteria!







**Speed and comfort!** The Bristol 32 gets her extra go from Ted Hood's fine line design. Her look alike big sister, the Bristol 39, is consistently in the money.

But comfort is what we are really after. And an extended trunk provides really comfortable accommodations for six inch centerboard or full-keel models.

**Check the price!** For those who know yachting values . . . check out the 32 feature by feature. Go aboard comparable boats in this category with a critical dollar-versus-value eye and find out what real value means when you compare them with the 32. After you've compared value, compare performance. After you've compared performance, compare accommodations. After that, what? Compare the reliability of designer and builder. After this, it's up to you!

#### **Bristol 32 Standard Equipment**

**Hull & Deck:** Molded high-impact fiberglass reinforced polyester resin . . . largely woven roving . . . hand layed up, the best construction available. No fillers are used. Hull and deck thicknesses vary to suit structural demands. Deck house, deck and cockpit are integrally molded. Deck clamp and cove stripe molded with hull. Teak toe rails (unvarnished). Non-skid pattern molded into deck, seat and cabin top. Two flexible, corrosion-proof PVC (with water trap) Dorade boxes molded

onto trunk cabin. Opening two-way forward hatch (translucent) with molded gasket receptacle, hatch lock, and hatch adjuster. Hinged lazaret hatch. Molded seahood for hatch . . . with spray rail. Mounting base for companionway dodger.

**Cockpit:** Molded as part of deck. Seat level enough below deck level to provide high coaming for comfortable back rest. Self bailing cockpit. Cockpit drains fitted with seacocks. Molded cockpit seat hatch, completely scuppered to prevent leakage, is fitted with security hasp. Coamings and other trim . . . first quality teak.

**Deck Hardware:** All fittings are highest grade stainless steel, chrome-plated bronze with brushed satin finish, or special corrosion-resistant aluminum alloys. Many items are custom-made to our own designs. Custom stemhead fitting with integral chocks. Two (2) docking cleats fore & aft. Bristol-type winch bases . . . with handle storage in bases. Main sheet traveler.

**Interior:** Underside of deck in main cabin finished with smooth fiberglass "head-liner." Main cabin is equipped as follows: Convertible dinette (port) sleeps two. Berth (starboard) has pipe berth over with mattress . . . sleeps two. All berths have 4" polyfoam mattresses with breathable covers (removable for laundering). Exposed fiberglass on sides of

hull behind berths is covered in soft, deep-pile, non-absorbent nylon. Cabin floor is varnished mahogany plywood (or, at extra cost, solid teak). Interior wood trim is satin-finished mahogany. There is generous drawer and locker space throughout. Doors are paneled and fitted mahogany. Interior hand rails. Bulkheads available in satin-finished Honduras mahogany or muted shades of easily-maintained Formica.

**Galley** . . . located starboard aft . . . contains two-burner recessed alcohol stove with hinged cover. Molded icebox (with styrofoam insulation) is on port side. Space for dishes, pots, pans, and canned goods is outboard of icebox. Additional lockers are located behind stove and sink. Stainless steel sink (14" x 10" x 6" deep) is equipped with high-capacity self-priming pump . . . with swing-away spout. Sink outlet is fitted with 1 1/2" seacock. All galley countertops are Formica. A hanging locker is conveniently located near companionway. Toilet room (located athwartships) contains large linen locker and counter with stainless steel wash basin. Outlet leads to seacock. Towel bar, mirror and hooks are conveniently located.

**Forward cabin** contains two (2) full-length berths with 4" foam mattresses. Each has drawer and storage bin built in under. Full length shelves run over each berth. Sides of hull are sheathed in nylon pile.





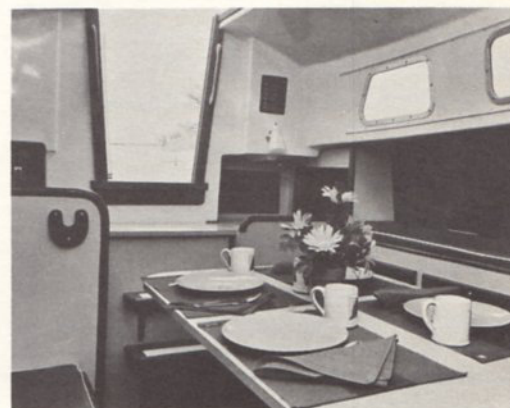
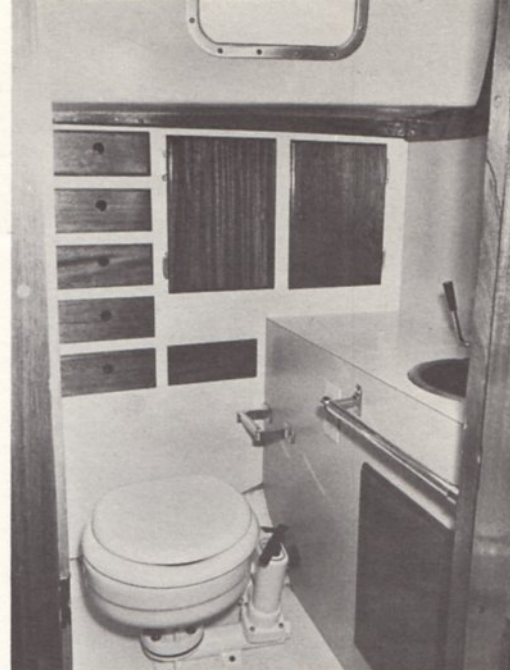
**Forepeak,** located forward of forward cabin berths, contains ample stowage space for anchor lines, suitcases, etc.

**Ports:** Cabin has two large fixed windows on each side . . . aft, and four fixed portlights . . . including those in toilet room. Curtain tracks and slides are provided.

**Engine Installation:** 30 HP Universal Atomic 4 gasoline engine. Bronze propeller shaft runs in Bristol-type rubber-mounted shaft log. Water-jacketed exhaust. Throttles and reverse controls installed on cockpit side and connected to engine with rattle-proof ball joints. Water temperature,

oil pressure, and ammeter gauges are located on aft side of cabin house. Two-bladed solid sailboat propeller. Oversized, nonbreakable fuel filter. Engine room exhaust blower . . . as well as natural forced draft ventilation (Coast Guard approved).

**Electrical System:** Heavy-duty system . . . using alternator on engine and 12-volt marine battery. Fused circuits. Master disconnect battery switch. Ship-to-shore 110-volt power receptacle with reversed



polarity alarm system. A 110-volt duplex receptacle in toilet room and an additional outlet in galley area. Centrally-located electrical panel. Seven (7) interior lights. Bow, stern and side running lights.

**Tanks:** Water tank (stainless steel) . . . 75-gallon capacity. Gas tank (monel) . . . 30-gallon capacity.

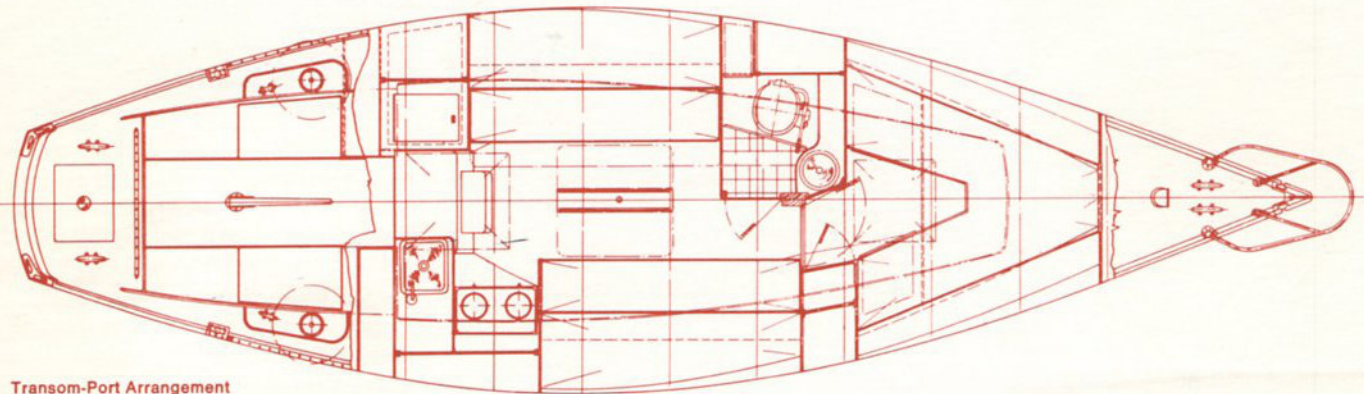
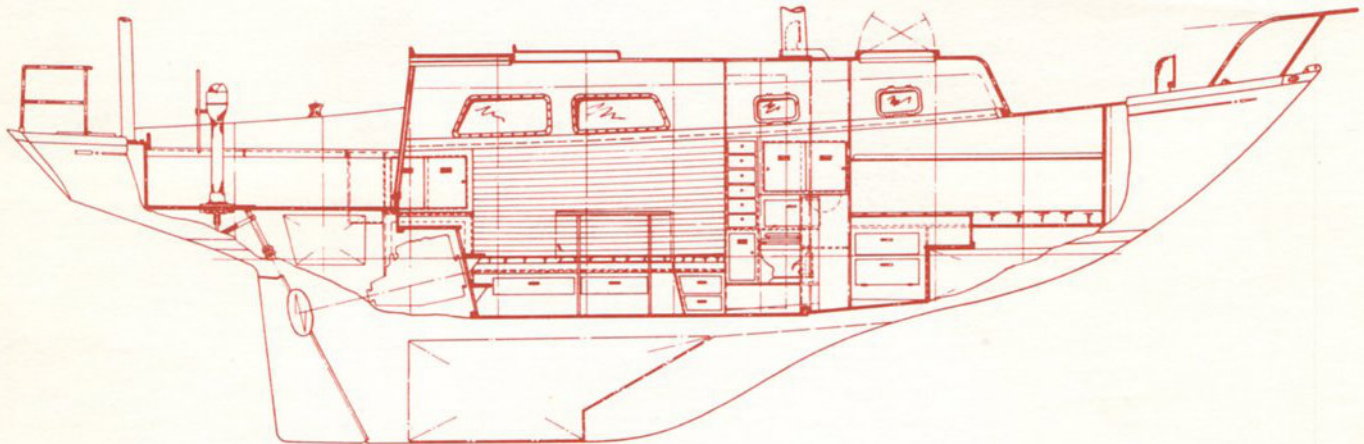
**Spars & Rigging:** Anodized aluminum mast and boom. Mast extrusion (our own design) with extruded sail track. Mast fitted with stainless steel masthead fitting. Sheaves are machined from solid stock. Standing rigging . . . stainless steel with swaged terminals and satin-finished chrome-plated bronze turnbuckles. Main and jib halyards are stainless steel with Dacron tails. Jib halyard leads to a top-action winch. Running rigging is Dacron. Flag halyard. Main sheet arrangement includes a traveler and #2 top-action main sheet winch. Main boom (with worm-gear roller reefing) is power operated at gooseneck outhaul assembly. Outhaul adjustable from gooseneck end of boom.

**Colors:** Owner may specify colors (from standard color selections) to be molded into hull and deck and choose from a variety of available colors for boot-top, anti-fouling bottom paint, cove stripe and mattresses.

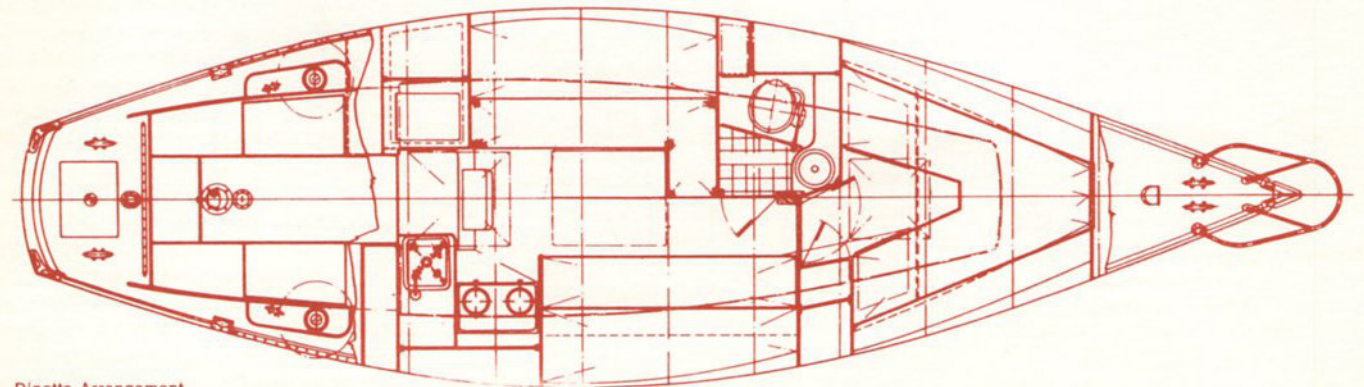


### Bristol 32 Specifications

<b>Models:</b>	Yawl
<b>Designer:</b>	Ted Hood
<b>Builder:</b>	Bristol Yachts
<b>L-O-A</b>	32'-1"
<b>L-W-L</b>	22'-0"
<b>Beam</b>	9'-5"
<b>Draft</b>	4'-7½"
<b>Ballast</b> <i>cast iron keel</i>	3300#
<b>Displacement</b>	10,800#
<b>Sleeping Capacity</b>	5
<b>Sail Area</b>	Yawl . . . 505 sq. ft.
<b>CCA Rating</b>	Yawl . . . 21.8



Transom-Port Arrangement



Dinette Arrangement



**bristol yachts**  
Bristol, R. I. 02809