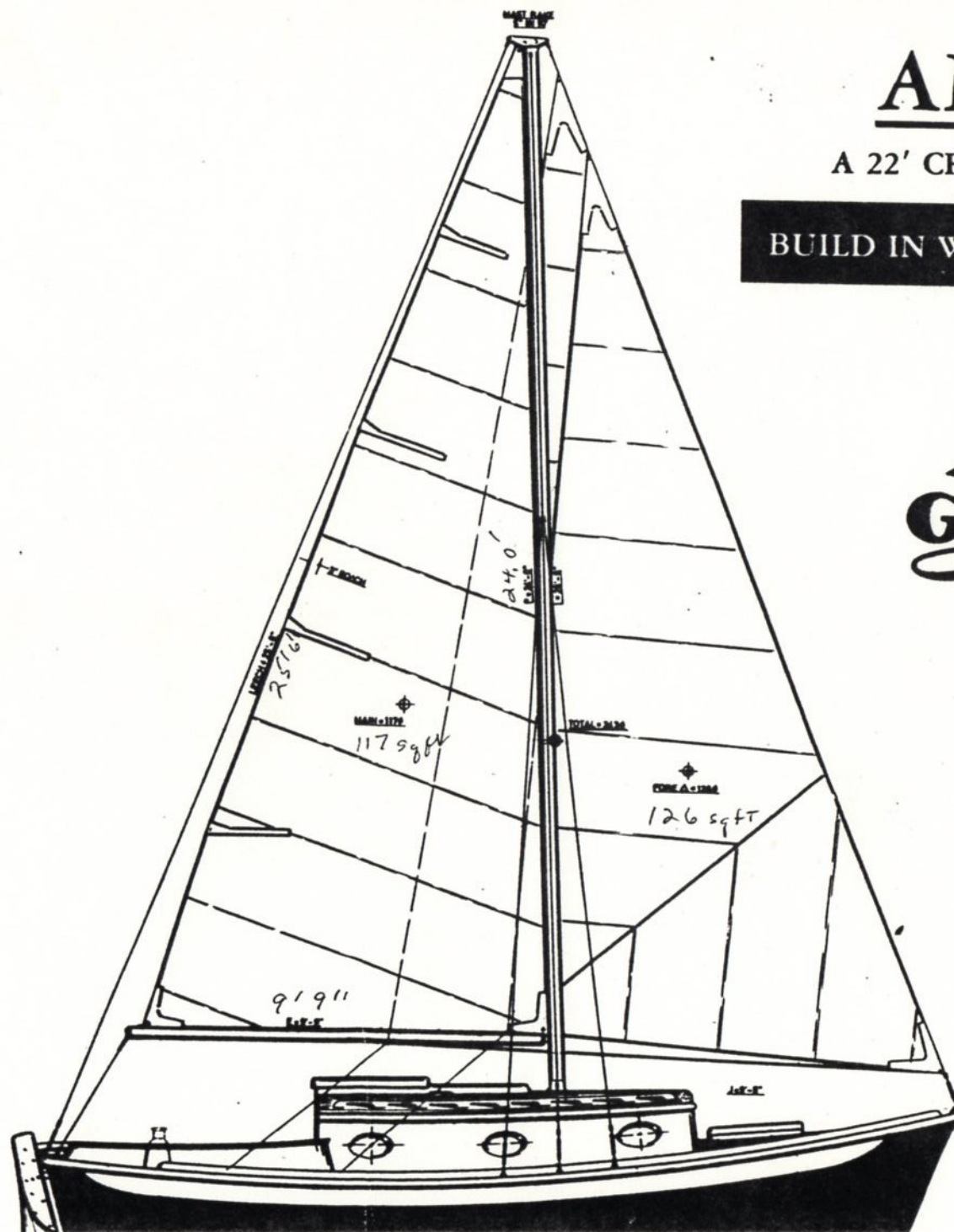


AMIGO

A 22' CRUISING SAILBOAT

BUILD IN WOOD OR FIBERGLASS

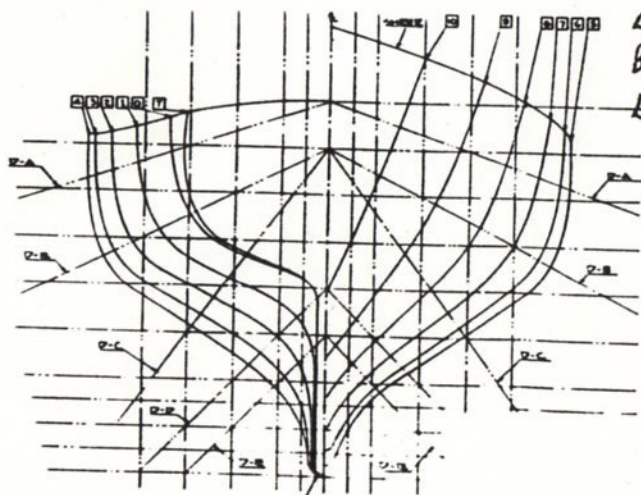


glass or equivalent sheathing, however, teak deck overlay is optional as are naturally-finished cabin sides.

"AMIGO" is a craft well suited to the amateur builder of high-integrity interested in quality workmanship, and who can persevere to this goal. This is the type of boat which shows attention to detail, and such care during construction pays off where safety and security at sea are paramount. For the discriminating woodworker who enjoys the finer aesthetic elements of the woodworking craft, "AMIGO" provides many opportunities to exhibit the talents of craftsmanship. Laminated knees and cabin beams, natural wood cabin soles and decks, crafted wood trim at bulkhead and cabinet edgings, and similar touches lend themselves naturally to the design, making your vessel a showpiece of your skill. The reward will be a feeling of pride and accomplishment equal to the completion of a craft of considerably larger size and a vessel of lasting value.

ABOUT THE PLANS & PATTERNS

The plans for "AMIGO" are especially well detailed and complete. Details are given for all rig options and powering options. For those who want to do the lofting process, a Table of Offsets is provided. However, most amateurs want to avoid this tedious task, and therefore will use the **FULL SIZE PATTERNS** provided. In addition, the plans are supplemented with voluminous instructions covering all aspects of the construction, plus a hull material listing so that cost estimates for this portion of the construction can be made at the outset. Plans for the **FIBERGLASS VERSION** are further supplemented by our illustrated manual, "FIBERGLASS BOATBUILDING THE GLEN-L WAY". We doubt that you'll find a more complete package regardless of the version you build at such a reasonable price, AND we pay the postage to anywhere in the U.S.



AMIGO

CHARACTERISTICS

Length overall (minus bowsprit)	22'-0"
Length waterline	19'-2"
Beam	8'-0"
Draft	3'-0"
Freeboard forward	4'-2"
Freeboard aft	2'-10"
Displacement	5100 lbs.
Ballast	1775 lbs.
Height (to cabin top)	8'-0"
Headroom	5'-10" to 6'-0"
Fuel capacity	13 gals.
Water capacity	50 gals.
Sleeping capacity	4
Sail area — Masthead rig: Main	117 sq. ft.
Foretriangle	126 sq. ft.
Total	243 sq. ft.
Sail area — Gaff rig: Main	174 sq. ft.
Jib	76 sq. ft.
Total	250 sq. ft.
Hull type: Round bilge full keel hull designed for "one-off" fiberglass or strip-planked wood construction.	
Sail type: Masthead or gaff sloop	
Power: Transom-mounted outboard or inboard gasoline or diesel engine, 250 lbs. max., 5 to 10 B.H.P.	
Trailer: Designed for use with GLEN-L SERIES 6000 boat trailer plans.	

ACCESSORY KITS AVAILABLE FOR YOUR AMIGO!

- **HARDWARE KITS**
- **RIGGING KITS**
- **MASTHEAD SPAR KITS**
- **SAILS**

SEE PRICE LIST & CATALOG FOR DESCRIPTIONS