

# BALBOA 27



Easy to trailer, ideal for any boat ramp launching . . . and a real pleasure to sail . . . it's the exciting **BALBOA 27!** You also get luxury features normally found on much bigger boats.

The **BALBOA 27** is from the board of Lyle Hess. The 27, the largest of the traditionally excellent **BALBOA** line, is designed with the classical features synonymous with performance and style.

The shallow draft keel carries 2460 lbs. of ballast and the retractable centerboard adds 140 lbs. for a total ballast of 2600 lbs. The centerboard assures excellent windward performance and good maneuverability while it can be retracted off the wind to reduce drag and provide access to shallow coves.

The six-foot, two-inch headroom opens up the main salon for spacious accommodations including facing settees. The large, airy galley lends itself to comfortable, effortless meal preparation. Other interior features include: enclosed head compartment, berths for six, hanging locker, plenty of storage for extended cruising and teak bulkheads and trim.

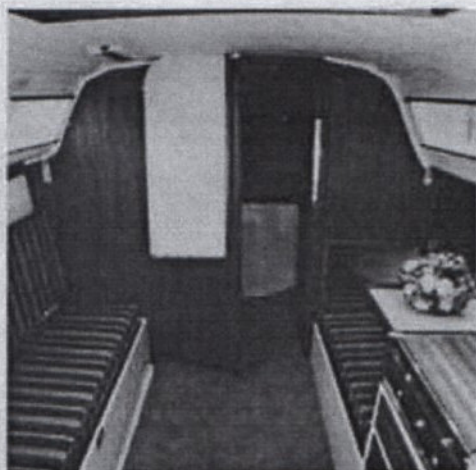
When you couple the race-proven hull design with an extremely livable interior you'll understand why the **BALBOA 27** commands respect from competitors and cruising veterans alike.

You can have her with provision for an outboard engine or complete with a diesel engine and even wheel steering if you desire. She is loaded with standard equipment.

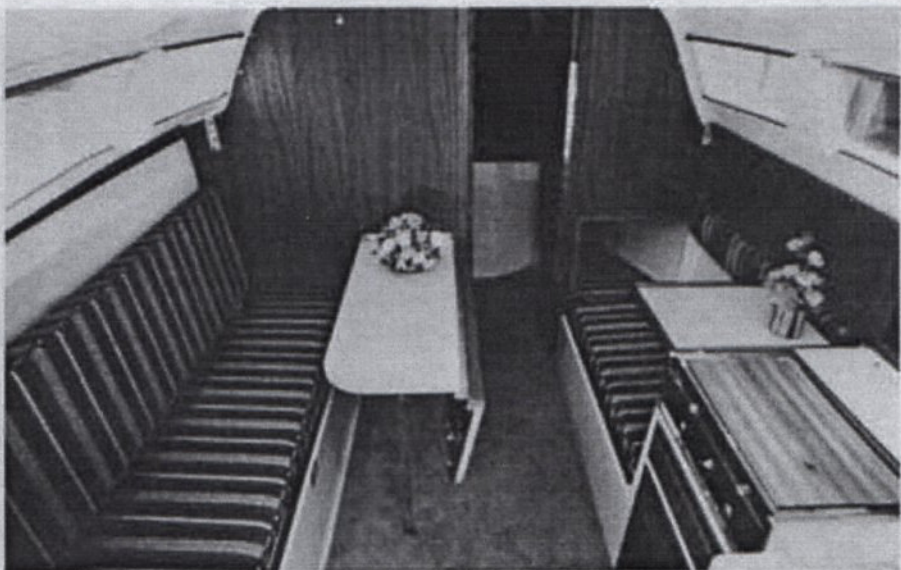
## STANDARD EQUIPMENT

**EXTERIOR:** Hand-laid hull and deck with molded non-skid and forepeak chain locker, self-bailing cockpit with lockable starboard storage compartment and lazarette, sliding fiberglass hatch with teak trim and laminated teak drop boards, teak safety hand rails, full length rub rail with vinyl insert, internal ballast with centerboard adjustable from cockpit, large main cabin windows with opening ports in head, all windows tinted, all hardware non-corrosive or stainless steel, bow and stern pulpits with lifelines and stanchions, two bow mooring cleats, two stern mooring cleats, two genoa/jib sheet cleats, genoa track with adjustable genoa block cars, mainsheet traveler with 6:1 block assembly and quick release cam cleats, navigational lights, high density foam/fiberglass rudder with stainless steel fittings and custom tiller, aluminum spars fitted with jiffy reefing, jib halyard winch, winch handles, and all required cleats and sheaves, heavy duty stainless steel turnbuckles and rigging with swaged fittings, Dacron running rigging, boom topping lift pendant.





The table folds up and away or down to provide a large dining or cocktail area



Tremendous interior room with sleeping for six and still trailerable and launchable!!



A full size galley makes meal preparation easy

You'll find the performance among the very best



**INTERIOR:** Fiberglass hull liner, berths for six; fabric cushions with 4" foam, and carpeting, aft galley complete with stainless steel sink, water pump, 21 gallon tank, teak sea rails around galley counter top, 3 cubic foot ice box, interior ice box drain, smoked plexiglass cabinet doors, enclosed head compartment, storage cabinets above berths, 6'1" head room in main cabin, 5'10" in head compartment, stowable dinette table, 12-volt electrical system with running lights, fluorescent interior cabin lights and fused switch panel, one marine battery in battery box, teak companionway steps, forward hanging locker in head compartment and much more!

#### SPECIFICATIONS

L.O.A. 26'6"	L.W.L. 23'0"	Beam 8'	Draft 2'5" - 5'6"	Total Displacement 4,900 lbs.	Total Ballast 2,600 lbs. Centerboard 140 lbs.	Sail Area 295 sq. ft. Main - 134 sq. ft. Lapper - 161 sq. ft.	Genoa 150% 242 sq. ft. Spiralizer 472 sq. ft.	Optional 9 h.p. Diesel Engine Maximum Outboard Power 20 h.p.	Headroom 5'1" Berths for 6
-----------------	-----------------	------------	----------------------	-------------------------------------	--	--	---	--	-------------------------------------

Equipment and specifications subject to change without notice.





See the fabulous country



Warm, clear, blue waters  
are very inviting



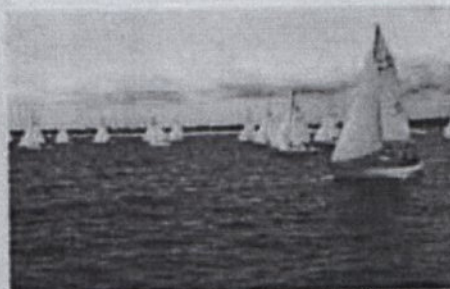
Anchor in a peaceful secluded waterway



You'll always have plenty of company at  
N.A.S.A. events to share experiences



N.A.S.A. members with their boats  
nestled among the pines



Enjoy a N.A.S.A. race

Somehow sunsets are always more  
beautiful when you are out and away



Trailer to Mexico — experience the  
fun of a beach barbecue. Enjoy your  
own mariachi band while delicious  
hamburgers sizzle

**N.A.S.A. IS...PEOPLE, PLACES, FUN,  
INFORMATION.**

**N.A.S.A. IS...TO BE ENJOYED BY  
PEOPLE WITH THEIR  
SAILBOATS.**

**N.A.S.A. IS...THE NORTH AMERICAN  
SAILING ASSOCIATION.**

New owners of *BALBOA* sailboats are automatically members for the first year with first year dues paid by the manufacturer.

It doesn't matter if you live on the East Coast, West Coast, or inbetween. N.A.S.A. fleets are near for you to have fun with.

### **PURPOSE**

The North American Sailing Association was formed for the purpose of bringing together sailing people who share common interests. N.A.S.A. is a learning process. Through races, cruises, workshops, social evenings they get together to share knowledge and learn from others. Their goal is total family involvement and fun under sail.

### **HISTORY-MEMBERSHIP**

N.A.S.A. was organized in April of 1972, as an Aquarius owner association. In March 1973 the association was incorporated and the types of sailboats eligible for membership were expanded. Hundreds of families across the nation hold membership in N.A.S.A.

### **COMMUNICATION**

A bi-monthly newsletter, the *MAINSHEET* is the primary communication with the membership. The *MAINSHEET* features news on regattas, "how-to" hints for improving the performance and comfort of member boats, and articles of general interest.

Local fleets publish their own newsletters which feature items of local interest and publicize current activities. An annual membership directory serves to put members in touch with each other. N.A.S.A. has been the subject of articles appearing in boating publications such as *Pacific Skipper*, *Trailer Boats*, *SEA*, *Motor Boating & Sailing*, and the *Time-Life* series on Boating.

### **LOCAL ACTIVITY**

Feeling the greatest benefit comes from sailing together, N.A.S.A. actively supports the formation of local fleets. The flexibility permitted by a trailerable boat makes cruising possible both near and far, and N.A.S.A. helps to bring it all together.