

BAUER 12
STANDARD MARCONI RIG INSTRUCTIONS

Section I. Drain Plug & Rudder

Drain Plugs: Check to see if both drain plugs are in place. Drains are located 1: in the aft floor section and 2: *Outboard at bottom of the transom. If not in place, the two plugs and a spare plug will be in one of the storage compartments. To drain water inside boat, remove plug in cockpit floor and water will drain directly to the outside.

***NEVER REMOVE DRAINPLUG LOCATED OUTBOARD AT BOTTOM OF TRANSOM WHEN THE BOAT IS IN THE WATER!!!**

****WHEN BOAT IS IN USE, BOTH DRAIN PLUGS MUST BE IN PLACE****

Rudder: Mount rudder on transom. Lock rudder with safety locking device on stern.

Tiller: Attach tiller by placing pin over hook on rudder. For security, you can tie a thin piece of line from the tiller pin to the rudder, with a little slack in between.

Section II. Rigging the Mast

1. Lay the mast in the boat, matching mast foot to mast step in boat, with forestay placed to lead forward.
2. Insert aft pin in mast step deck plate to form hinge pin and install retainer ring pin.
3. Tie spare line to forestay penguin hook and pass through padeye at stem.
4. With an assistant lifting the aft end of mast as high as possible, raise mast using padeye to snub line, as required
5. When mast is in place, insert forward pin in step and secure with ring. Snap penguin hook to padeye at stem.
6. Secure shroud adjusters to padeyes on gunwales, port and starboard. Set shroud adjusters equally for desired tension in stay and shrouds.
7. Tie jib halyard to jib peak grommet with bowline knot. Snap jib hank onto forestay while hauling jib. When jib is up, secure halyard to port cleat on mast and tie the jib tack to stem fitting.

Turn page over please.....

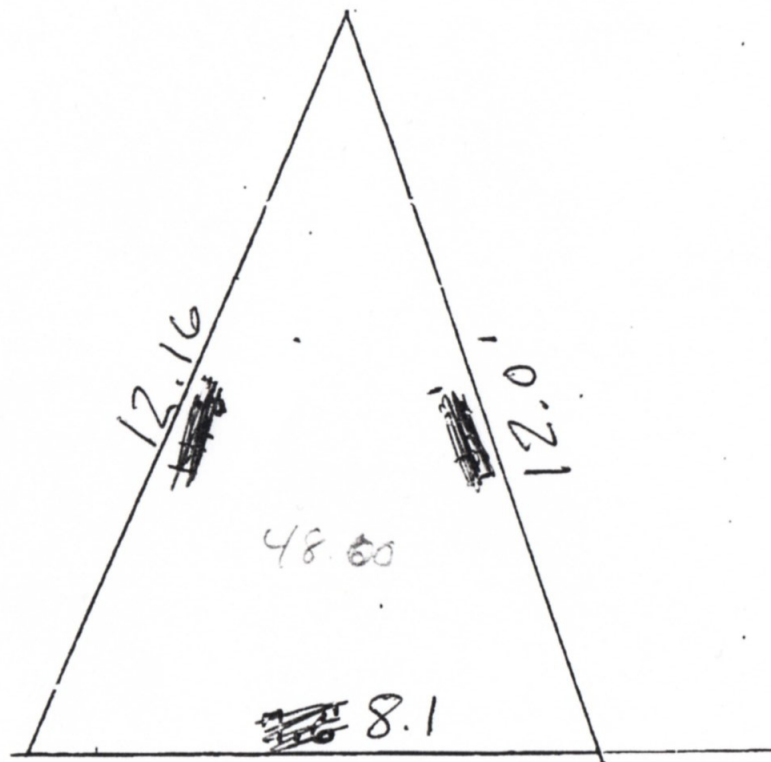
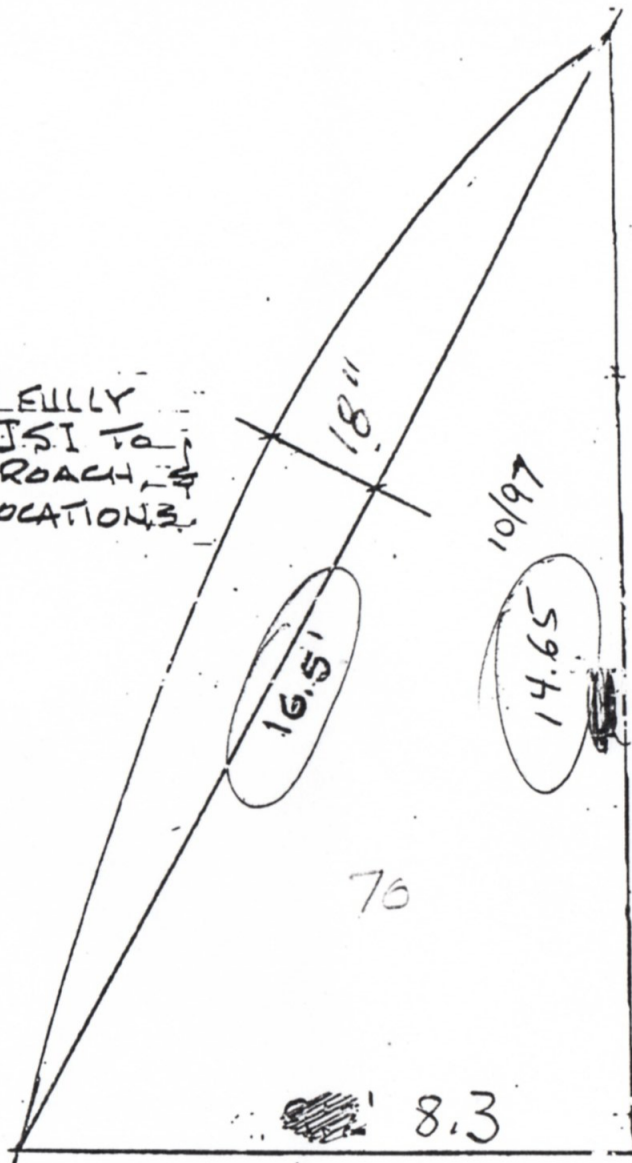
BAUER 12
STANDARD MARCONI RIG INSTRUCTIONS

Continued from other side....

8. Make bight at midpoint of jib sheet and pass it through clew grommet. Bring both free ends back through bight and pull tight against grommet.
9. Lead Port and Starboard jib sheet outboard of shrouds and through swivel deadeye, **BUT NOT THROUGH CAM CLEATS AT THIS TIME.**
10. Install sheet blocks on 2nd and 3rd bails on boom and triple swivel block to traveler car on track.
11. Tie main halyard to Mainsail head grommet with bowline knot and haul, feeding bolt rope into slot in mast. Secure main halyard to starboard cleat on mast.
12. Secure clew to sliding car on boom. Tie clew line to car and reave through single block, forward to cleat on boom (Port or Stb.)
13. Pass reef line through padeye on boom, with knotted end up, through reef grommet and down through cheek block, forward to cleat.
14. Tie Main Sheet at aftmost bail with bowline knot. Reave through Traveler block and forward through two single blocks on boom. Pass down through swivel block/cam cleat fitting on Centerboard Trunk, from forward to aft.

DO NOT PASS SHEET THROUGH CAM CLEAT AT THIS TIME

NOTE:
 MAIN TO BE FULLY
 BATTENED, JSI TO
 DETERMINE ROACH &
 BATTEN LOCATIONS.



SAIL PLAN

MODEL	TYPE	YEAR	DATE	REVISED	SHEET
B-12	MARCONI	97	10-1-96	4-18-97	A-123A

LOU LOCK
 MARINE CORPORATION, INC.

A hand-drawn technical sketch of a crane or lifting mechanism. On the left, a vertical mast is shown with a pulley system. A horizontal beam extends from the mast to the right. A cable or rope runs along the bottom of this beam. Two labels are present: 'YANG ASSEMBLY' is written near the left end of the beam, and 'CB TRUNK' is written near the right end. The drawing is simple, using lines to represent structural components and dashed lines for hidden parts.

Tip Sheet - (NOT SHOWN)

MODEL	TYPE	YEAR	DATE	SEMI	DO

— 1 —

C

MAILING INFORMATION