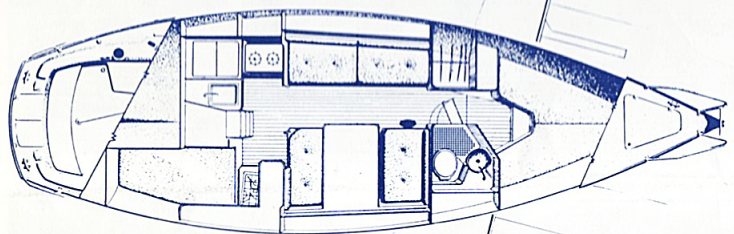
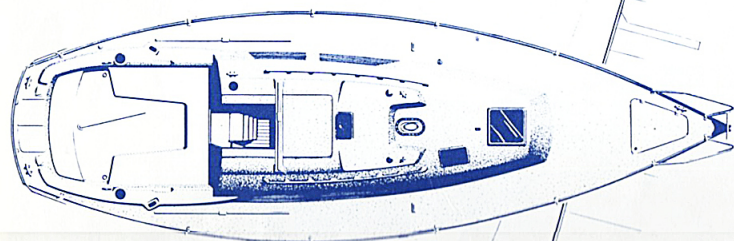


C&C Yachts News

New 32. A brilliant new C&C design goes into production early 1980.



A CRUISING HOME THAT PAYS UNUSUAL ATTENTION TO THE HUMAN NEEDS AND CREATURE COMFORTS OF TODAY'S RACER.

- New 3-way cockpit design. Wheel. Tiller. Maxi seating.
- Complete navigator's station. Enclosed washroom/head.
- An overabundance of drawers, lockers, cupboards, hanging locker, and bureau.
- Gracious accommodation for six 6-footers with convertible dinette.
- Great cooks of the world galley. Gimballed stove, huge ice box, sink, and loads of storage.
- Integrated anchor well, bow roller, split bow pulpit.
- Available in fixed keel or keel/centerboard.

A HIGH ASPECT SAIL PLAN COMBINED WITH A PERFORMANCE UNDERBODY TO SATISFY THE GO-FAST EGO OF TODAY'S SAILOR.



NORTH RIVER ROAD MARINA
30200 N. RIVER ROAD
MT. CLEMENS, MICH. 48045
TELEPHONE - 469-7777

BOAT SHOW ISSUE

More new boats
inside!



Landfall 38.

It gets you to landfall fast. In comfort and privacy that keep intimate friendships alive and well.

She's from the boards of one of the most respected designers of performance yachts in the world—C&C Design Group. So she moves.

She's a swift, spirited and purposeful cruiser. But she's endowed with an extra measure of comfort and privacy.

Her interior is rich with varnished teak and tufted upholstery. And it is crammed with astonishing details like overhead cupboards in the galley.

She gives up nothing in strength and security in heavy going, because she is built with uncommon rigidity and structural integrity.

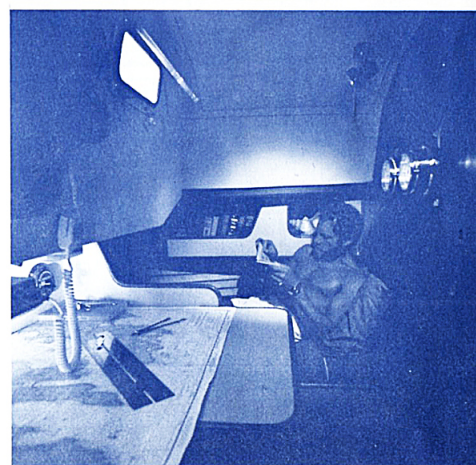
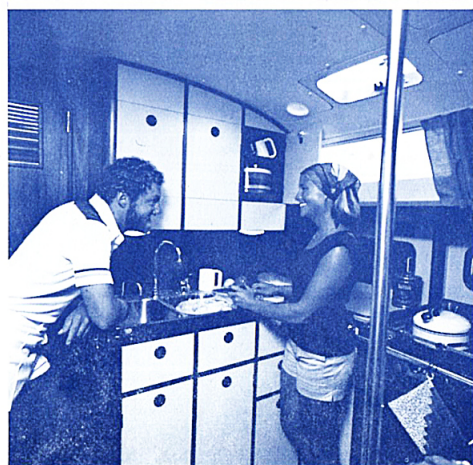
The Landfall 38s masthead sloop rig, with 648 feet of high aspect main and foretriangle, provides the power to drive her hull fast and to get her moving in light air sooner. Her sail-handling gear makes it possible—and practical—to sail her single handed from the cockpit. All major lines lead aft. The main can be reefed from the cockpit and so can the foresail with optional roller furling.

She is built for dry, easy cruising, with stretch-out accommodations for two couples that are neatly sectionalized for privacy.

If you see yourself as a cruising yachtsman who wants to feel a oneness with the vessel, talk to your C&C dealer about the Landfall 38.

Dimensions:
L.O.A.: 37'7" L.W.L.: 29'2"
Beam: (max.) 12'0" Draft: 5'0"
Displacement: (approx.)
15,000 lbs.

Ballast—lead: (approx.) 6,500 lbs.
Sail Area: (100% fore Δ)
648.5 sq. ft.
Mast height from waterline: 51'9"



Some illustrations may show options.

C&C 36. An uncommonly sleek and sensuous yacht.

She looks like she's making hull speed, even when she's at rest.

The tripod rig and double spreaders provide solid fixity for spar adjustment, so she's easy to race-tune. Underwater, her speed comes from a shallow, rounded bottom and low wetted area. Her fixed, deep-fin keel and swept-back spade rudder or keel/centerboard give her stability and a well-balanced helm.

New interior.

But the news in the new 36 is below decks. C&C Product Development Group have refined her plush seating with redesigned upholstery. Her flooring has been enhanced with liberal use of teak. Cabinetry on each side of the main salon features new sculptured teak detail, while new sliding plexiglass cupboard doors in the galley allow for more utensil and food storage than before.

Add to this plush salon a cruising galley, a handy nav station, a completely enclosed washroom with a deep-sink vanity and shower head, and commodious accommodations for six—then you begin to understand the 36.

It's a lot of racing yacht, but it's also a lot of cruising yacht. It must be seen to be fully appreciated.

C&C quality: the more you're around boats, the more you believe in it.



Dimensions:
L.O.A.: 35'8" L.W.L.: 27'8"
Beam: (max.) 11'6"
Draft: (Std. Keel) 5'11"
Draft: (Keel CTRBD.)
Up 4'0" Down 7'6"
Displacement: (Std. Keel)
12,000 lbs.
(Keel CTRBD.): 12,800 lbs.)

Ballast: (Std. Keel) 5,100 lbs.
(Keel CTRBD.): 5,900 lbs.
Sail Area: (100% fore Δ)
600 sq. ft.
Mast height from waterline: 51'6"



C&C quality: the more you're around boats, the more you believe in it.

Sailing is one of life's great pleasures. As an active sport or a recreational pastime, it can guide you through the best years of your life. At C&C Yachts, we're committed to the philosophy that you should sail the best possible yacht through those years. With that goal in mind, C&C has evolved into one of the few truly complete organizations within the industry.

Few yachts anywhere are offered with so complete a range of design, engineering, production and custom skills and experience behind them. Expert utilization of production techniques, purchasing and rigid quality control, combined with superb skills enable C&C to produce a range of production and custom yachts unrivalled in quality and performance. We've also learned, through our custom designs, how new technology can help build better production boats.

And we've learned never to compromise on craftsmanship. All of which ensures you can find exactly the boat you want in a C&C, exactly the way you want it.

It's also backed by a full range of after-sales services through C&C's authorized dealer network.

AN INTERNATIONAL REPUTATION.

As a corporation, C&C Yachts is a relative youngster. Since 1969 we have grown dramatically, established an international reputation for the excellence of our products and have emerged as one of the largest designers, builders and marketers of yachts in the world. With manufacturing plants in Niagara-on-the-Lake and Oakville in Canada; Middletown, Rhode Island in the U.S.; C&C produces yachts in the 24-ft. to 40-ft. range and also custom designs up to 90-ft.

To survive and prosper in the boat business though, it's not enough to have the right designs and the right sizes.

In North America there are many builders with a good range of sizes and basically good designs.

At C&C, that fact was recognized early, and perhaps influenced the most important decision in the company's history.

COMMITMENT TO OWNERS.

That decision was to seek success quite simply by building the best yacht. Not only from the standpoint of design, but in quality too. A yacht for which no owner would ever have the need to apologize. A yacht with which every owner would feel safe and confident. And with this decision came another C&C commitment: to constantly seek better ways to build yachts, no matter how sacred the old system might be.

Every time a C&C yacht sails out of port, we know our reputation sails with it. That's why we still build an inordinate amount of hand work into every yacht we produce. And why we're constantly looking for ways to build a better yacht, not a cheaper one.

What does this all add up to? Simply this. When you buy a C&C yacht you're buying built-in strength, quality and safety that the rest of the world might never notice. But you'll know. And you'll know, in a C&C, you have the best yacht you can buy for the best years of your life.

C&C Landfall 48.

A ship from which to watch the world go by.

The first thing you'll notice about the Landfall 48 is its pilot house with panoramic windows. It affords shelter without being shut in. It has an optional inside steering station. As well, it's a day cabin with plush seating, dining table and built in bar. Also, it affords convenient access to the forward and rear staterooms. And, of course, easy engine room access.

Unacceptable to C&C but perhaps to other manufacturers, would have been the limitations of a center cockpit.

As it is, the 48 offers an exceptionally large, open air cockpit for cruising or entertaining aft of the pilot house. The seats are over 7' long. All major lines are led aft for ease of handling. Cutter rig is chosen for the same reason.

There is a split stern pulpit that incorporates a swim ladder. Forward, there is a split bow pulpit, built-in anchor well and a custom stemhead fitting that incorporates double rollers for both rode and rode/chain.

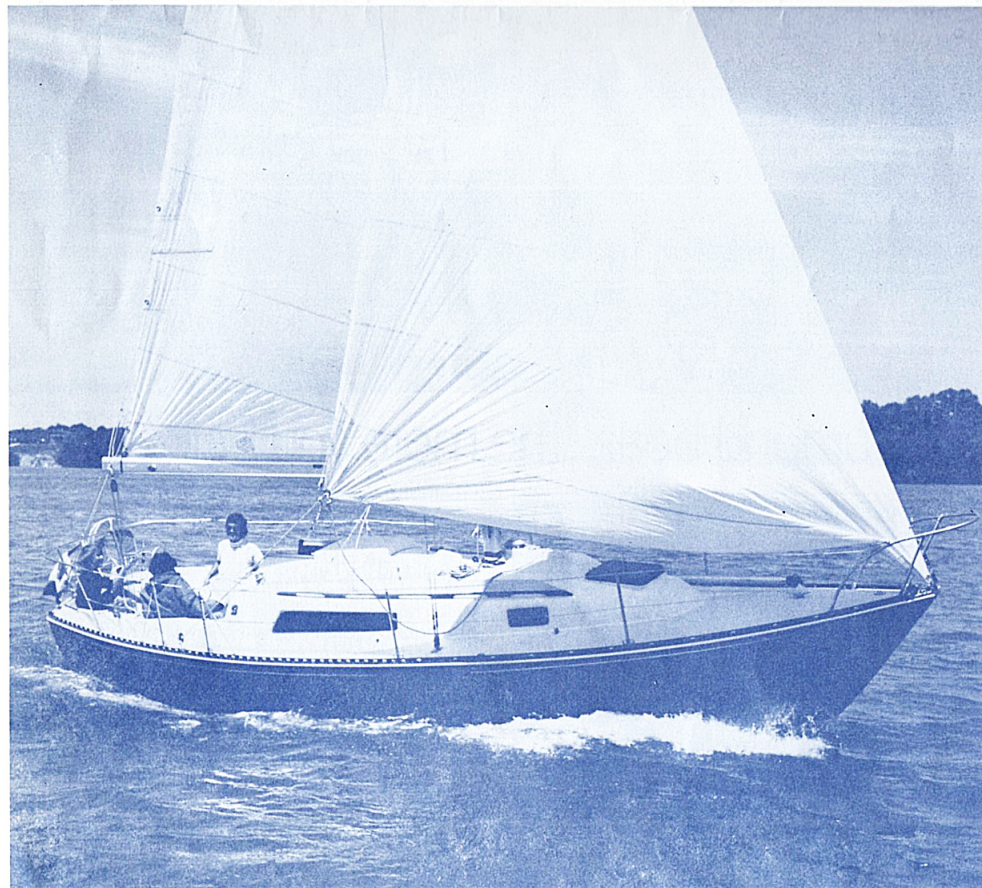
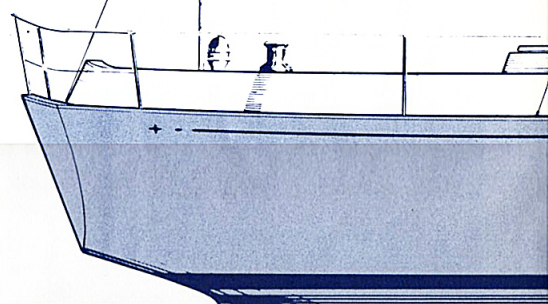
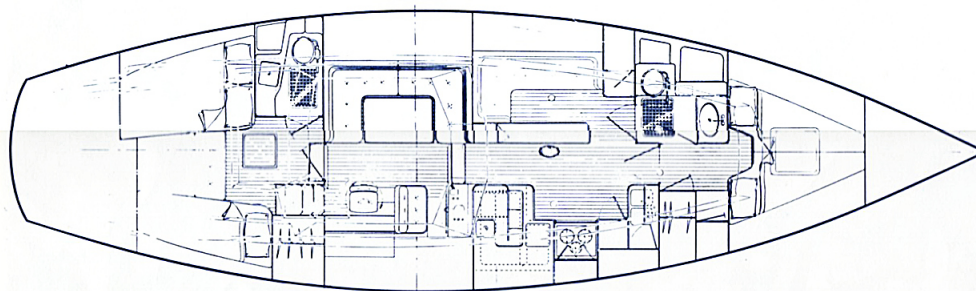
Throughout, there is an abundance of opening hatches, dorades and vents. The interior shines with light and pulses with fresh air.

The owner's stateroom is situated aft and is fully enclosed for privacy. It contains a double and single berth, bathroom ensuite with shower, settee. Plus there's ample storage for clothes and personal effects in a bureau with drawers and a hanging locker. The forward stateroom is equally spacious and contains a V-berth, hanging locker, bureau and its own washroom with vanity, shower and head.

The enormous galley has large counter areas, an extra large stove and oven, separate freezer and refrigeration compartments, overhead cupboards, and special provision for bulk storage. Of course, hot and cold pressure water is standard throughout the yacht. The skipper and guests can now enjoy the gastronomic delights of cruising to the fullest.

Opposite the galley is an additional day cabin with table, settee and storage divider. An optional arrangement can turn this cabin into a third double stateroom.

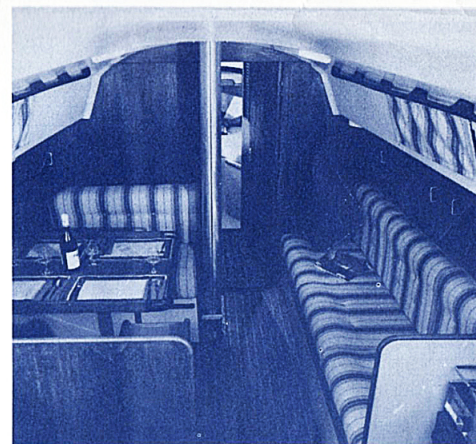
It takes many thousands of words to properly describe this outstanding cruising home. If you are interested, additional information is available through your C&C dealer.



Some illustrations may show options.

Dimensions:
L.O.A.: 30'0" L.W.L.: 24'9"
Beam: 10'0" Draft: 5'0"
Sail Area: (100% fore Δ) 459 sq. ft.

Ballast: (approx.) 3450 lbs.
Displacement: (approx.) 8000 lbs.



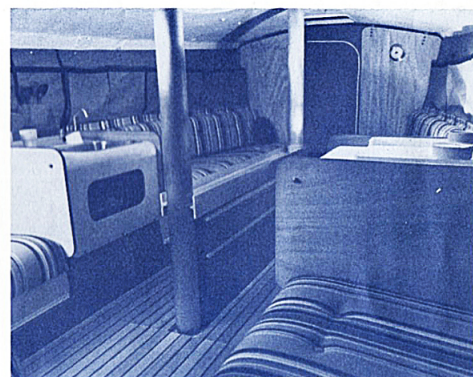
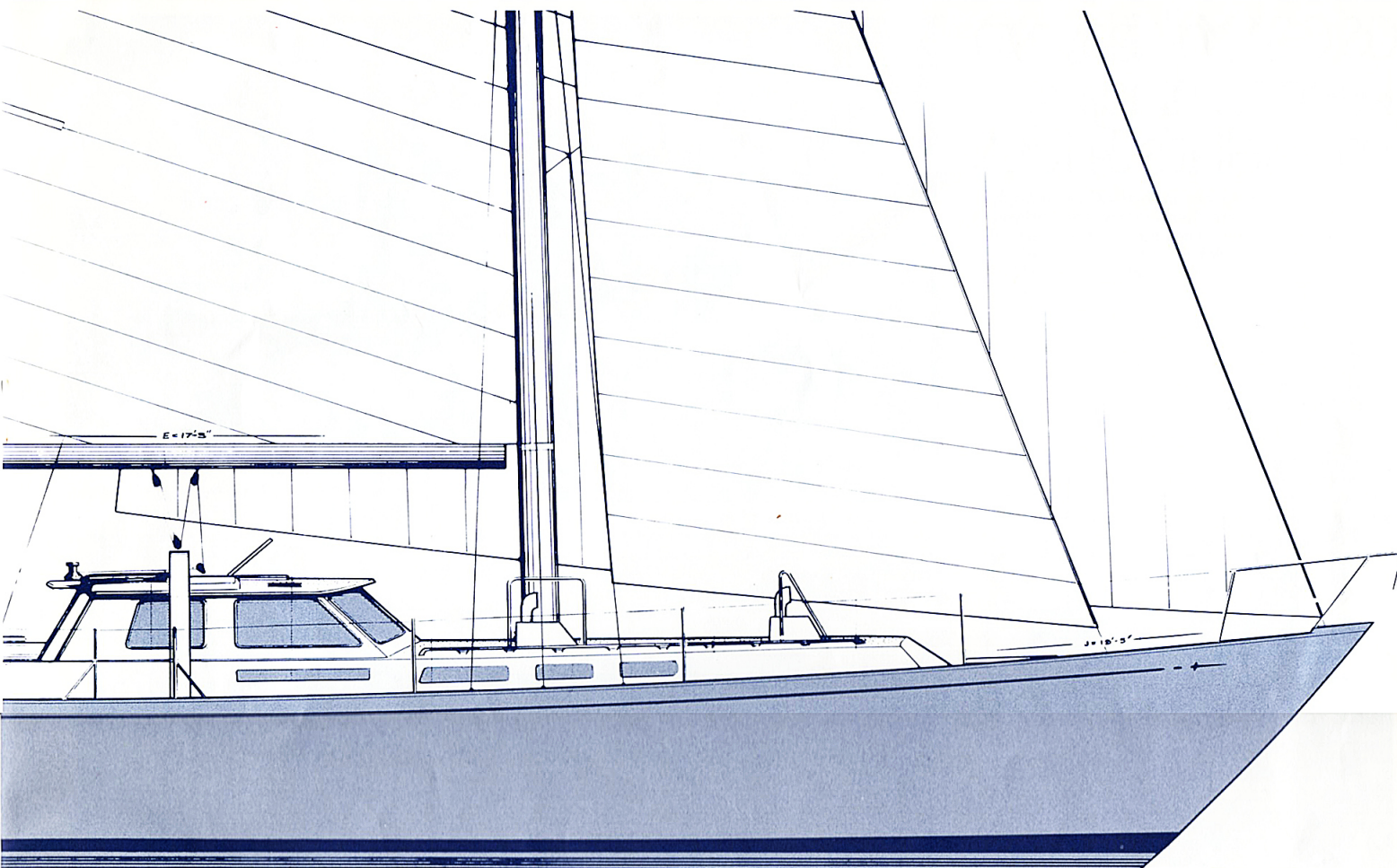
C&C 30. Success breeds success.

The ranks of those who sail a C&C 30 grow each year. Better than 600 strong, they have made it one of the most successful C&C designs of all time. For good reasons. Like a roomy dinette configuration in the main salon. Like berths for five adults. Like a fully enclosed head and a pressure water system. Like a good cruising galley, with lots of storage space, a deep sink, and a big ice box. Shoal draft, roller furling headstay, custom anchor roller, anchor locker are available to give the 30 true cruising capability.

But her best virtue is her handling. Easy. Forgiving.

An unbeatable combination of good looks, good accommodations and good C&C quality. That describes the very successful C&C 30.

C&C quality: the more you're around



Mega 30. Action.

Some have called Mega a dinghy for grown ups. And that's not far from the truth. Mega offers the performance-minded sailor action and fun second to none.

She takes on 33 and 34 footers upwind and 40 footers downwind. Plus, she can cross the country at 50 M.P.H. on a trailer. And her retractable keel opens up even more territory. (Hello, Florida, West Coast.)

Down below, however, Mega 30 is no dinghy. She has an interior designed to be cruised. There's six feet of headroom where it counts. Four 6'6" bunks ready for use, a galley module and stainless sink, plus a head. Ample storage has been provided under the bunks, inside the counter areas and in the bow and stern sections.

Outboard and above her berths are handy pouches that are an absolute joy for the cruising or racing sailor who likes to collect things (and don't we all). Yes, Mega is different; but she's also a C&C. You'll be hearing a lot more about Mega 30 in the future.

Dimensions:
 L.O.A.: 29'11" L.W.L.: 27'0" Displacement: (approx.)
 Beam: 7'11" 4500 lbs.
 Draft: (launching) 2'0" Sail Area: (100% fore Δ) 419 sq. ft.
 (Shallow cruising) 3'6" (racing) 5'0"

d boats, the more you believe in it.

C&C 24. You have to keep reminding yourself it's 24 feet.

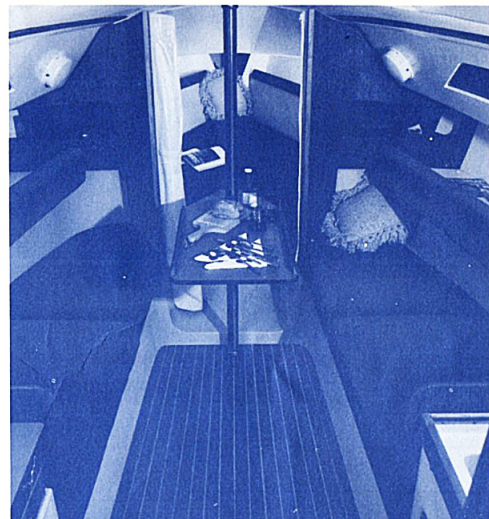
Once you learn to recognize a C&C 24 from a distance you'll start seeing them everywhere. And you also notice some interesting characteristics. They're family boats, they're club racers, they're cruisers.

One thing is for certain, people who own a C&C 24 get plenty of use out of their boat. You'll see them entertaining in the roomy cockpit. And you'll see them win races against all kinds of competition because the C&C 24 is a very competitive boat. And you'll find families cruising because the interior layout is as practical as it is attractive. This may sound like an over-promise, but when you get to look over a new C&C 24, you'll have to keep reminding yourself it's 24 feet.

Put that together with C&C's traditionally high resale value and you've got a good investment along with a lot of good family fun. And the 24 features the same high standards of construction as every other C&C yacht. Like a sliding plexiglass companionway hatch and fitted grab handles. Like built-in bookshelves on both sides of the main bulkhead. Like a full galley that features sizeable food prep areas,

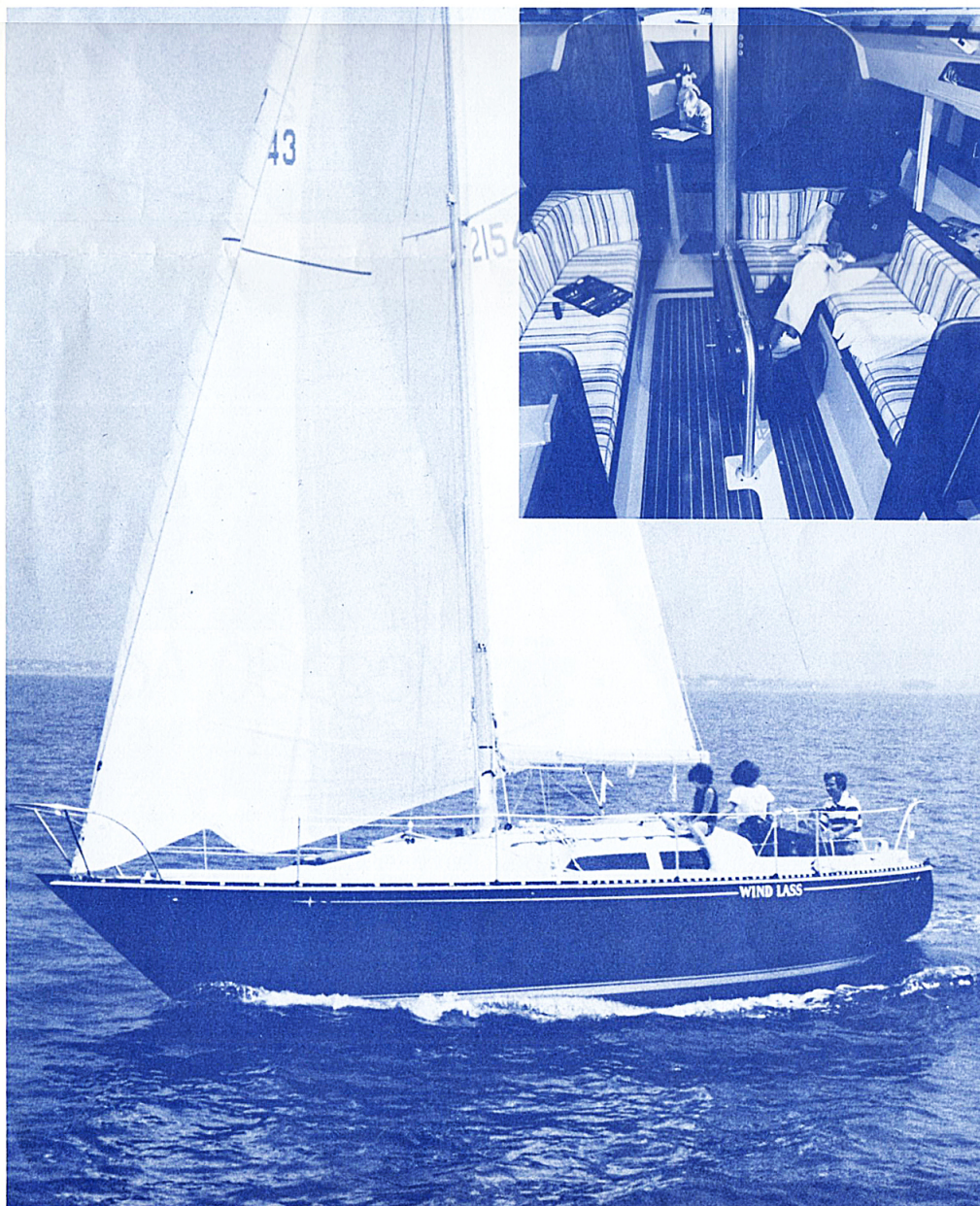


recessed food trays, loads of dish and dry storage, a large stainless steel sink with fresh water pump, a built-in ice box and a recessed two burner alcohol stove. Like to know more? Visit a C&C dealer and pick up a brochure for more detailed information.



Dimensions:
L.O.A.: 24'0" L.W.L.: 19'6"
Draft: 4'0" Beam: 8'9-3/4"
Sail Area: (100% fore Δ)
252 sq. ft.

Ballast: (approx.) 1050 lbs. lead
Displacement: (approx.)
3200 lbs.
Mast height from waterline: 32'6"



C&C 34. It wins. It entertains. And how!

We asked a C&C 34 owner what he liked best about his yacht. Performance was the first answer, but then there was the cockpit comfort, he said; that too, was a favourite feature. And then, he said, there's the handy navigation station, a real luxury in a boat of this size.

And you can throw quite a dinner party in the salon with the settee facing another L-shaped settee and the drop-leaf table set for six.

Not to mention the meal you can cook on the gimbaled 3-burner stove with oven, that is set in a U-shaped galley that is complete with sink and ice box and blends a taste for the best with practicality and efficiency.

Then he digressed back to performance, naming the boats he'd beaten the pants off in the club races. Some of them bigger boats, too.

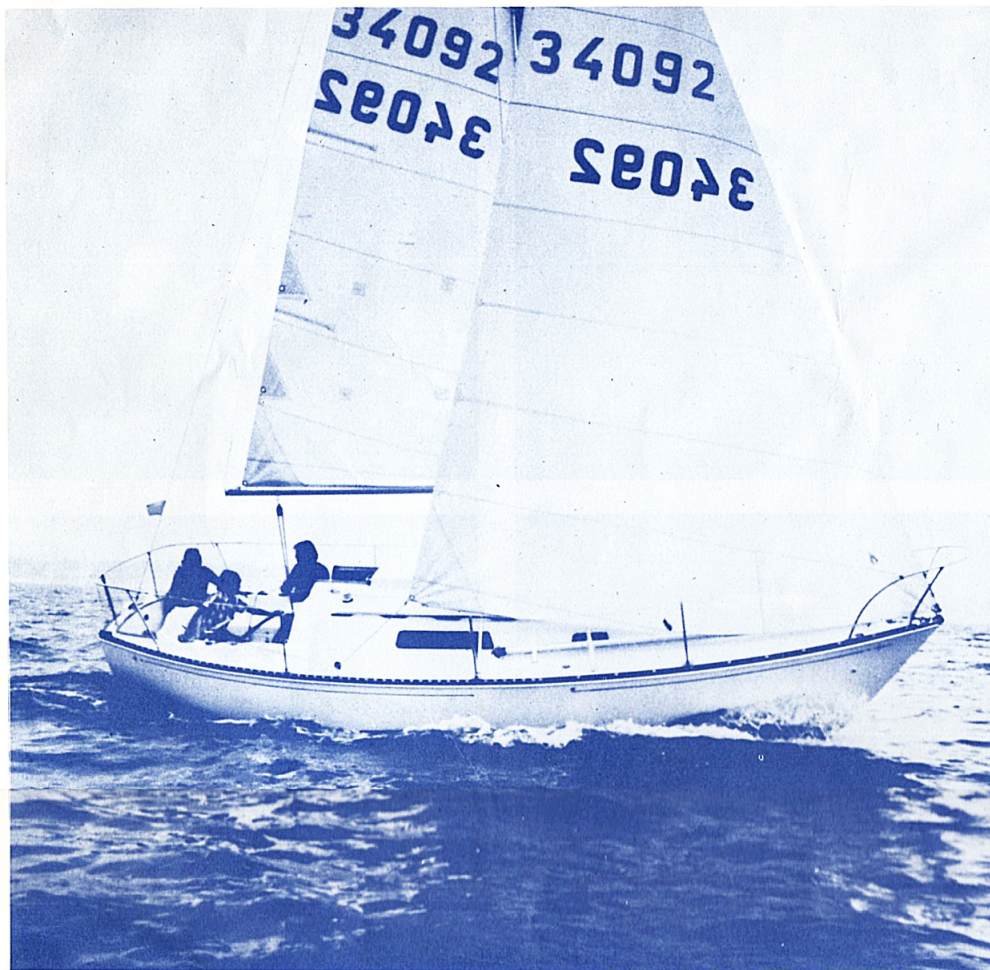
Point is, the C&C 34 is whatever you want it to be. It's fast and it's comfortable. And that translates to: it wins and it entertains. And it does both extremely well.

It's all a matter of C&C design. The cabin trunk for example, lets you cluster winches around the mast or around the forward perimeter of the cockpit. Your choice, racing or cruising or combination of both. The spacious T-shaped cockpit really is comfortable, thanks to high coamings, angled seat backs and recessed cleats. It also offers a choice of wheel or tiller steering.

A built-in anchor well clears the decks for action and makes anchoring while cruising a pleasure because there's also lots of room for a good long rode. Now you know why the 34 is fast becoming one of the most popular C&C's ever built. Feature after feature you won't find a more carefully thought-out yacht. If you're looking for a boat of this calibre, you owe it to yourself to examine every inch of the C&C 34. This boat is available in fixed keel or keel/centerboard configurations.

Dimensions:
L.O.A.: 33'6" L.W.L.: 25'10"
Beam: (max.) 11'0"
Draft: (Std. Keel) 5'11"
Draft: (Keel CTRBD.)
Up 4'0" Down 6'11"
Displacement: (Std. Keel)
10,100 lbs.
(Keel CTRBD.) 11,090 lbs.

Ballast: (approx.) (Std. Keel)
4,100 lbs.
(Keel CTRBD.) 5,050 lbs.
Sail Area: (100% fore Δ)
517 sq. ft.
Mast height from waterline: 48'5"



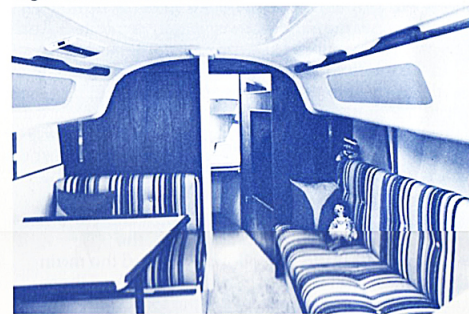
C&C 27. Speed, spirit and space!

This is one yacht that has captured the hearts of sailors everywhere. Over 800 C&C 27s are on the water today. And for very good reason. Her speed and spirit have made her an outstanding competitor everywhere she races.

And her accommodations—especially her roomy dinette and settee arrangement in the main salon—have won the admiration of many sailors who have found themselves with a bigger boat, yet less room than a C&C 27 (look at the specifications, it's really a 28 footer).

Her interior virtues include a full cruising galley, enclosed head, standing headroom, and five big comfortable berths. Also lockers, drawers, shelves and storage space abound.

This is C&C design at its best. And it's also value at its best. Because with so many C&C 27s on the water her resale value is assured. And that makes her a good, sound investment.



Dimensions:
L.O.A.: 27'11" L.W.L.: 22'11"
Beam: 9'0" Draft: 4'5 1/2"
Sail Area: (100% fore Δ)
372 sq. ft.

Ballast: (approx.) 2,116 lbs.
Displacement: (approx.)
5,500 lbs.
Mast height from water line: 41'0"

C&C 29. Loads of creature comfort. Lots of performance.

This C&C design really does combine the best of both worlds.

Inside, you'll find a complete cruising galley with a good measure of counter space and food and utensil storage. A nav station with plenty of elbow room. A fully enclosed head and washroom with sink and vanity and a large drawer for toilet articles, plus a laundry bin. Two luxurious settees with a good size drop-leaf dining table between. Generous forward cabin with 6'4" berths. A double quarter berth. In total, sleeping accommodations for six adults and standing headroom throughout. Inside, you can only imagine that you are aboard a much larger yacht.

But never forget she has the heart of a racer. Her underbody and her rig are designed to deliver the power needed to win. Or to make a swift, safe passage.

Find out all there is to know about the C&C 29 from any C&C dealer.



Dimensions:
L.O.A.: 29'7" L.W.L.: 23'7"
Beam: 10'7" Draft: 5'3"
Sail Area: (100% fore Δ)
422 sq. ft.

Ballast: (approx.) 2,650 lbs.
Displacement: (approx.)
7,500 lbs.
Mast height from waterline: 43'6"



C&C 40. A yacht for victory. An interior for celebration.

If you've been outsailed by a C&C 40, you've been outsailed by inspired design and tough construction discipline. At normal cruising speeds, the 40 offers smoothness and comfort comparable with any racer/cruiser on the market. At racing speeds, she can beat one-offs in her division. And that's performance that pays off when a fast passage is the safe comfortable passage.

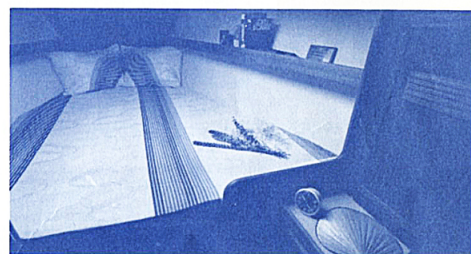
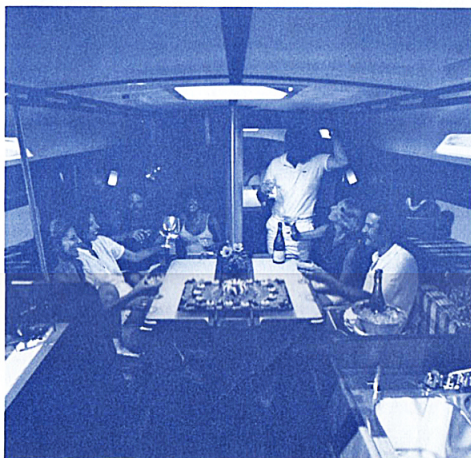
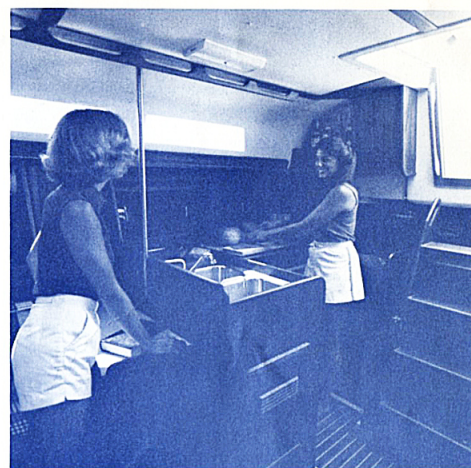
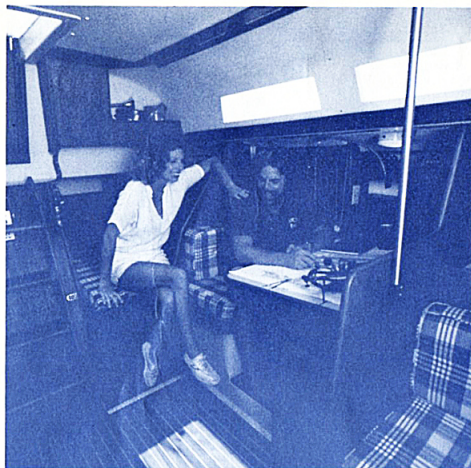
In SORC. In the Chicago and Port Huron Mackinacs. In the Swiftsure. In the Bermuda Race. At Marblehead, Mass., where there's a fleet. She wins and wins and wins.

Her outstanding performance results from a carefully conceived matrix of design elements. Her fine entry. Her deeper forefoot. The configuration of her hull. Her state-of-the-art rig and sail plan. She goes beautifully to windward, she has enormous directional stability, and she goes virtually hands-off, even when her immense power is fully exploited. And she's available in fixed keel or keel centerboard.

In the interior, you will be overwhelmed by a sense of wide-open space. There's stretch-out room in every direction. Her galley is a cavernous U-shaped food center. Her nav station allows plenty of elbow room for chart work. And just imagine the spread you can lay out on that drop-leaf dining table. And how comfortably those aboard can be entertained.

And there isn't a berth shorter than king-size. And that goes for the forward double berth, the double quarter berth, the pilot berths and the main cabin settees that convert to two singles. And there is an ample washroom between the forecabin and the main salon.

The C&C 40 is a yacht you'll want to sail if you have a feeling for what "state-of-the-art" can mean to you. It's more than a matter of the highest technology. It's also a matter of art. Beauty of line. Fineness of

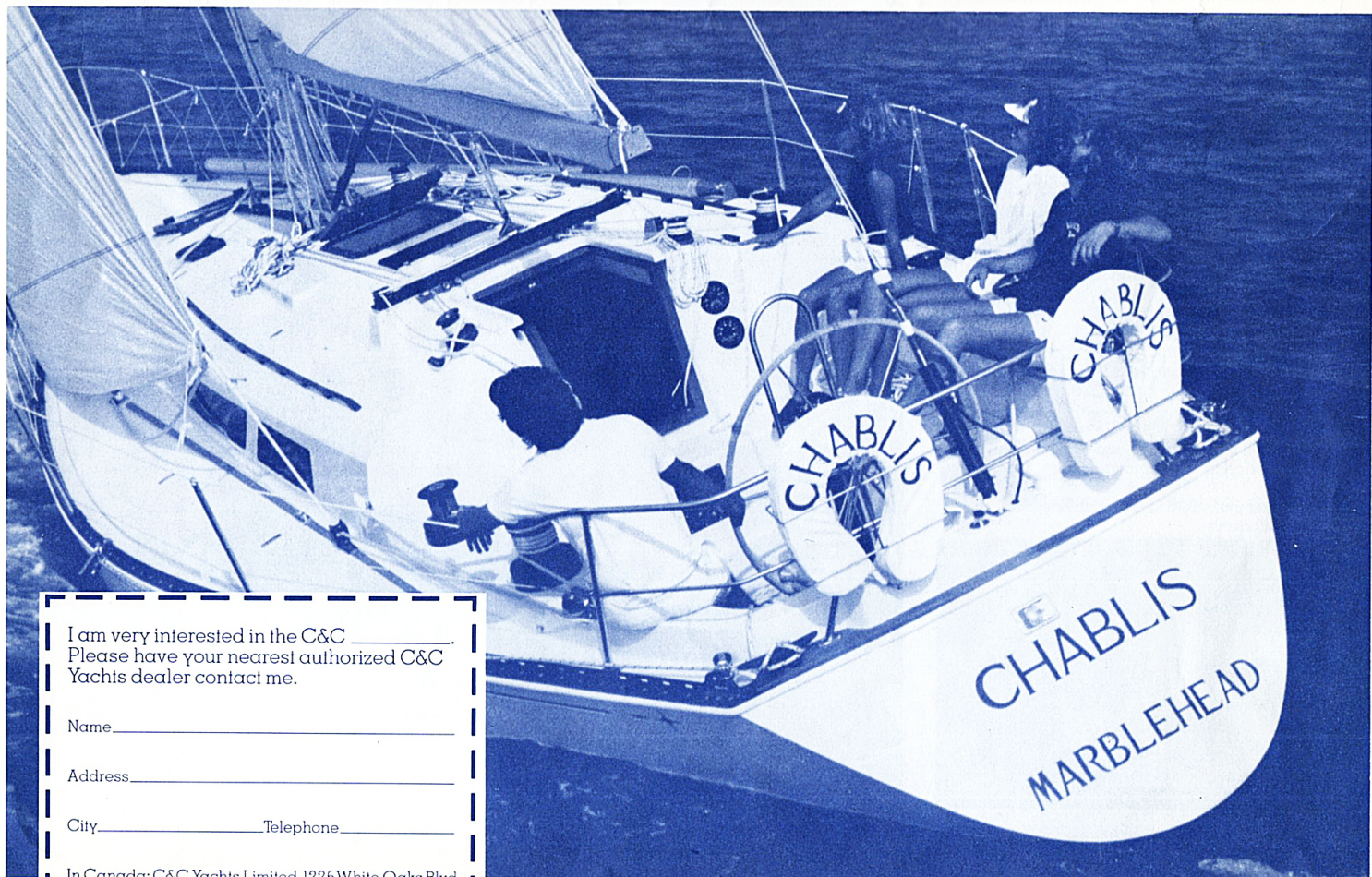


detail. And a dedication to putting things together the right way, rather than the expedient way, because we couldn't live with ourselves if we didn't.

Experience a higher state of the art of sailing. The C&C 40.

Dimensions:
L.O.A.: 39'7" L.W.L.: 31'6"
Beam: 12'8"
Draft: Fixed Keel 7'0"
KL/CTRBD. (Up) 4'9"
(Down) 8'6"
Mast height from waterline: 56'10"

Ballast: Fixed Keel 7910 lbs.
KL/CTRBD. 8,795 lbs.
Displacement: Fixed Keel 17100 lbs.
KL/CTRBD. 17,985 lbs.
Sail Area: (100% Fore Δ) 743 sq. ft.



I am very interested in the C&C _____.
Please have your nearest authorized C&C
Yachts dealer contact me.

Name _____

Address _____

City _____ Telephone _____

In Canada: C&C Yachts Limited, 1226 White Oaks Blvd.,
Oakville, Ontario L6H 2B9

In U.S.: C&C Yachts Inc., P.O. Box 'C', Oliphant Lane,
Middletown, R.I. 02840 U.S.A.



Printed in Canada.