

CAPRI 25



The Capri 25 is an exciting, hot new one-design racer which is also competitive in M.O.R.C. and P.H.R.F. fleets. The stiff and slippery hull form powered by an uncomplicated masthead rig, creates a boat with outstanding performance over a wide range of conditions.

The Capri 25 comes well equipped from the builder with all controls and halyards aft, and complete racing hardware.

The two level cockpit is efficient for competition action as well as large and comfortable enough for daysailing and weekend family cruising.

The finish is of fine yacht quality with molded-in non-skid surfaces and a wide selection of fast colors.



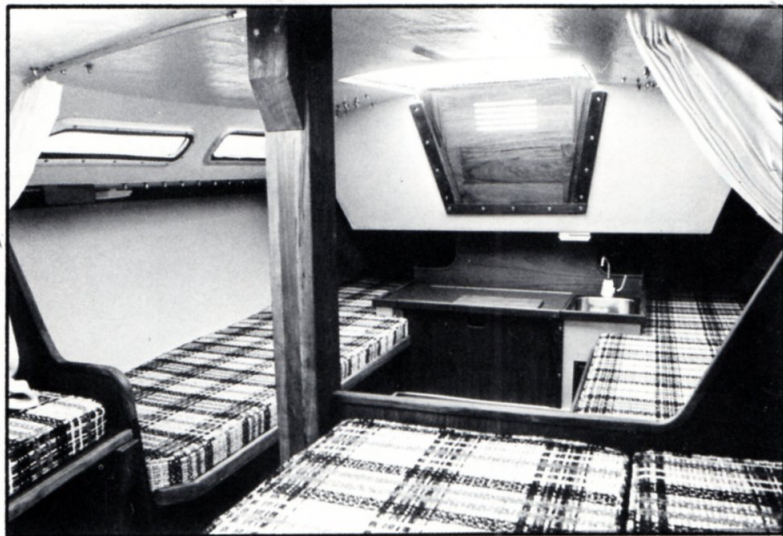
SPECIFICATIONS

Length Overall.....24'-7"
 Waterline Length.....19'-2"
 Beam.....9'-2"
 Draft.....4'-2"
 Displacement.....2785 lbs
 Ballast, Lead.....900 lbs
 Sail Area, 100% foretriangle..276 sq. ft.
 I.....30.75'
 J.....9.83'
 P.....26.50'
 E.....9.50'

All measurements are approximate

Please refer to the current price list for a complete listing of standard and optional equipment.

C
25



The comfortable four berth cabin is fully finished with textured molded hull and deck liners, teak bulk heads and trim. Fully lined lockers with hinged lids under the port and starboard settees provide clean, dry storage for clothes and gear. The head compartment forward can be enclosed for privacy. The galley is complete with storage bins, a stainless sink and fresh water system. A special locker conceals the portable ice box.

Designed by Frank Butler

Capri
Sailboats