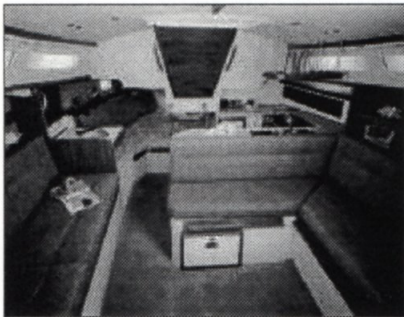


The new Catalina 30 MARK III has been redefined by incorporating some of the best modern features of our popular c-270 and c-320 designs. The transom and cockpit areas reflect the most significant refinements. The new stern section is now dramatically wider at the deck and curves gracefully to form a very functional and spacious boarding platform. The already famous c-30 cockpit is now even more comfortable than ever with wider coamings for outboard seating and new observation seats built into the stern rail. Low maintenance materials have been used extensively to give you more time to enjoy your c-30. New stainless steel traveler supports improve visibility and reduce friction on halyards.



The Catalina MARK III shares the under body and rig of earlier Catalina 30's and is eligible to participate in Catalina one design events and Class Association activities.

Below deck, the layout that defined a modern classic has remained true to it's heritage, but has become even more comfortable and functional with the addition of several thoughtful improvements and subtle refinements.

The galley has been made even larger with the design of new custom countertop surfaces. With the larger counter space has come increases in size and number of cupboards and drawers. An all new dish and cup storage rack better organizes often used items. The bright new head also makes use of custom counters and larger cabinets.



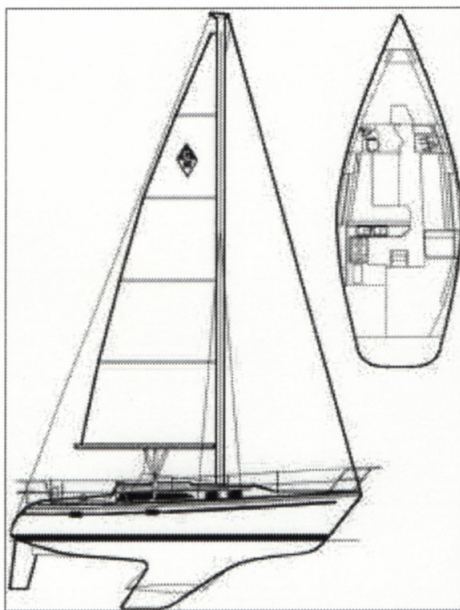
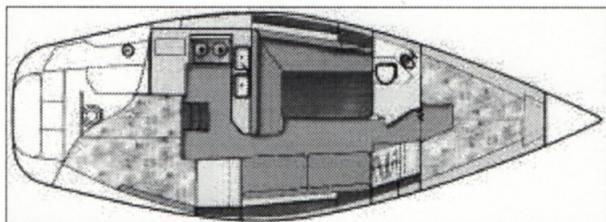
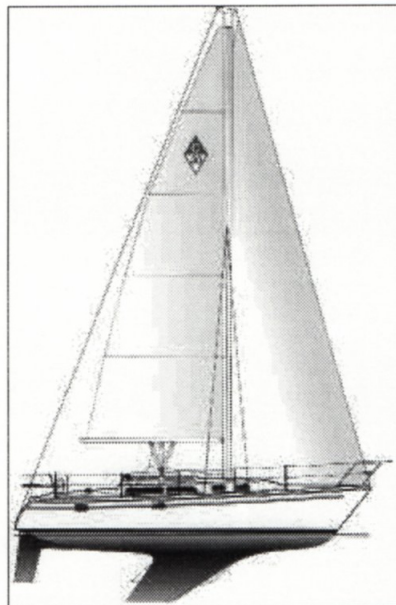
Varnished teak cabin surfaces are accented by polished brass light fixtures. Natural light has been increased through the addition of 3 fixed ports in the hull.

As with all Catalinas' we encourage you to create a 30 especially for your kind of sailing by selecting from an extensive list of equipment including a choice of wing or fin keel and tall or standard rigs.

SPECIFICATIONS

PRINCIPAL SPECIFICATIONS

L.O.A.	9.12m	29'-11"
LWL	7.62m	25'-0"
Beam	3.30m	10'-10"
Draft Fin	1.60m	5'-3"
Draft Wing	1.17m	3'-10"
Ballast Fin	1900kg	4,200lbs
Ballast Wing	1948kg	4,300lbs
Designed Wgt. Fin	4620kg	10,200lbs
Designed Wgt. Wing	4660kg	10,300lbs
SAIL AREA (Std. Rig)	41.43m sq	446 sq ft.
I	12.50m	41'-0"
J	3.51m	11'-6"
P	10.66m	35'-0"
E	3.51m	11'-6"
Displacement	8154kg	18,000lbs
Sail Area (Tall Rig)	46.92m sq.	505sq ft.
I	13.11m	43'-0"
J	4.01m	13'-2"
P	11.28m	37'-0"
E	3.66m	12'-0"



Return to Home 