

Catalina 36

36'

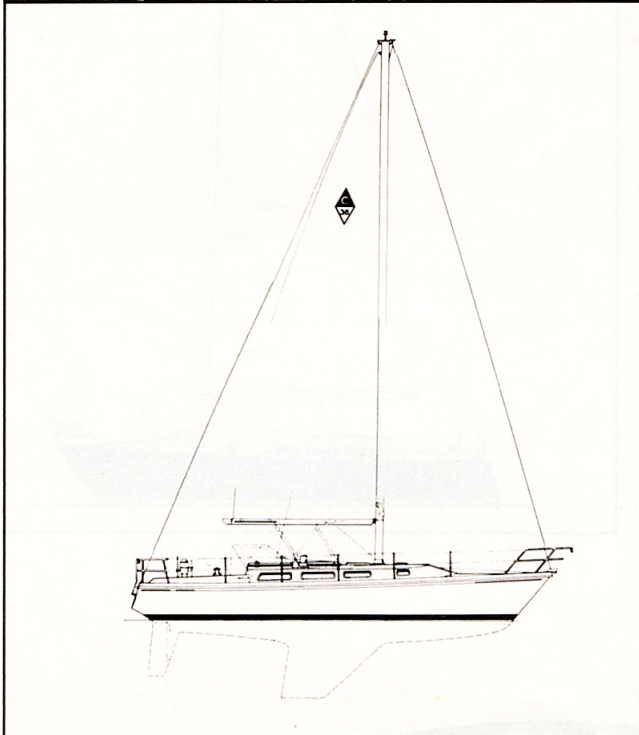
The Catalina 36 successfully combines luxurious accommodations, a secure, workable deck plan, and outstanding performance under sail. The hull is efficient and stable with graceful lines and has been designed with enough volume for spacious accommodation. The rig is powerful but still easily handled by a shorthanded crew. The rudder is a balanced blade with a long horizontal skeg molded into the hull for a light helm and good tracking ability.

The decks have molded-in bulwarks and nonskid. The side decks are wide and carried well aft for a secure access to the cockpit, even with the optional dodger in place.

There are four opening hatches on deck, plus the main hatch for lots of light and air below. Two dorade-type ventilators insure ventilation even in inclement weather. The interior has been designed to accommodate an active family or up to three couples in comfort and three-cabin privacy.

In the galley, there is a very large icebox with Plexiglass shelves, and a separate fiberglass-lined dry-food storage locker. The stove with oven is gimballed and provided with potholders and a safety rail. A choice of fuels is available. A double stainless steel sink, ample counterspace, storage, and fluorescent indirect lighting complete the galley and make it a pleasant place to work.

Opposite the galley is a navigator's desk with swivel chair, chart storage, and draw-



ers. The 12-volt and 110-volt panels are located above the navigator's desk with space provided for repeater instruments and stereo equipment.

The unique aft cabin is furnished with a settee to starboard, a hanging locker, and a double bunk on the centerline. There is an opening screened port aft for light and ventilation. Another double cabin is forward. The V-berths are oversized with full-sitting headroom and reading lamps over each bunk.

The head is forward and to port. Mirror finishes and crisp white formica trimmed in teak create a bright airy feeling. There is a seat for the shower area and a teak-grate sole with integral shower sump below. A translucent opening hatch above provides light and ventilation.

Engine and mechanical installations have been carefully planned to facilitate owner maintenance. The engine is completely exposed when the fully insulated engine hatch is removed. The fuel filter, pumps, fittings, and tanks are readily accessible.

An engineered structural system with stainless steel tie rods and molded structural hull liner insure the Catalina 36 is as rugged as she is beautiful.

L.O.A. 36' 4"
L.W.L. 30' 3"
Beam. 11' 11"

Draft:

Deep Keel 5' 10"
Shoal Keel 4' 2"

Ballast:

Deep Keel 6,000 lbs.
Shoal Keel 6,600 lbs.

Displacement:

Deep Keel 13,500 lbs.
Shoal Keel 14,200 lbs.

Sail Area 555 sq. ft.

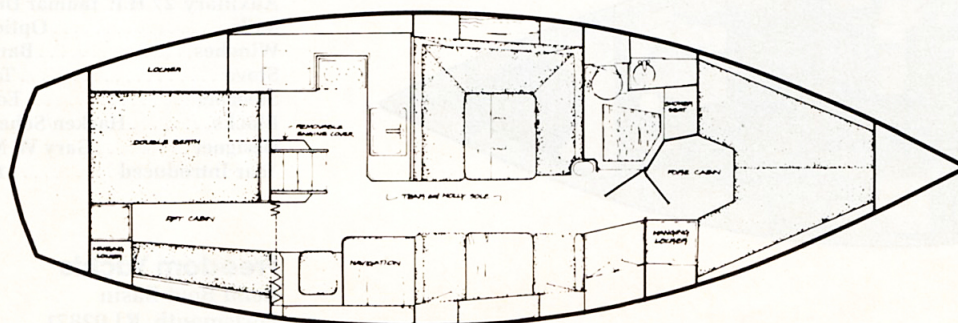
Rig Dimensions

Foretriangle:

I (Height) 44' 9"
J (Base) 14' 4"

Main:

P (Luff) 39' 0"
E (Foot) 12' 0"



Catalina Yachts
21200 Victory Boulevard
Woodland Hills, CA 91367

For More Information Circle No. 278