



Catalina Yachts

CATALINA 36 MK II

Because the Catalina 36 is easily handled by a couple, has a big comfortable cockpit, a spacious interior with two private cabins and the integrity to pursue cruising dreams, many experienced sailors consider the Catalina 36 the perfect boat for their sailing lifestyle.

The new Catalina 36 MKII has all the important characteristics that made the original the most popular thirty-six foot sailboat in the world. The new Mark II Catalina 36 is built in the same seakindly moderate displacement hull that tracks surely and performs well in a variety of conditions. The deck is the classic trunk cabin configuration designed by sailors, not stylists, so it's proven, comfortable, and functional.



The new 36 is the evolution of this successful design and incorporates the refinement that is possible only after building over 1,000 36's and listening carefully to owners comments and suggestions.



The new interior has an aft cabin with a large athwartship double berth, hanging locker, and bureau. The owner's cabin forward is comfortable, well ventilated and has a private entrance to the head.

Cruisers love storage space and the Catalina 36 is renowned for it. There are ample drawers, lockers, and bins for all your cruising provisions and gear.

The main cabin and galley have received special attention to design and detail. The galley is a functional 'U' shape, with composite countertops, the sinks are near centerline for proper drainage underway. A large refrigerated ice box is aft and a dry food locker is forward. A gimballed, stainless steel L.P.G. stove with oven is standard equipment.

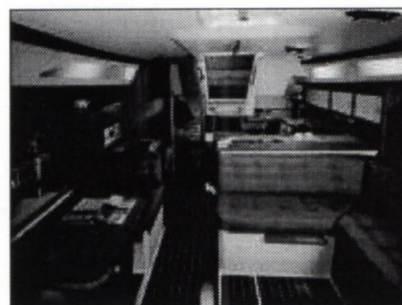
The main cabin can be arranged with a dinette or traditional table at your option. The

two seats and game table to starboard can be made into a settee or berth with the cushions provided. The entertainment center can be fitted with a stereo and concealed TV.

The main cabin and all interior teak has the warmth and durability only obtained with multiple coats of varnish. All interior finishes and fabrics have been selected for quality, appearance, and durability.

An important but often unconsidered aspect of boat ownership is maintenance. The new 36 has stainless steel hand rails and anodized spars, reducing maintenance on deck and extending your sailing season.

The mechanical, electrical and plumbing systems have been reengineered to increase dependability and accessibility. Engine access, for example, is excellent with the one piece insulated enclosure removed.



Aft of the engine a mechanical compartment contains the engine valves and filters. This makes maintenance and service easier.

The structural system and construction of the Catalina 36 is proven and straightforward. The hull is rugged, hand-laminated, solid fiberglass; the keel is lead with integrally cast stainless steel bolts.

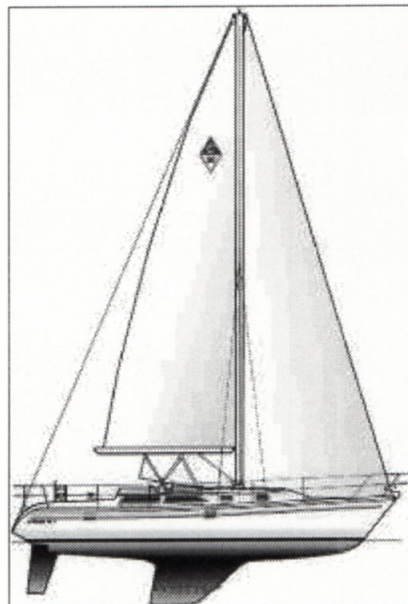
The mast is stepped through the deck on the keel and has inline spreaders and fore and aft lower shrouds, a sturdy arrangement that is easy to tune.

Board a Catalina 36, inspect her thoroughly and discover why the 36 has become the sailor's choice.

SPECIFICATIONS

PRINCIPAL SPECIFICATIONS

| | | |
|---------------------------------------|------------|------------|
| L.O.A. | 11.07m | 36'-4" |
| DWL | 9.22m | 30'-3" |
| Beam | 3.63m | 11'-11" |
| Draft, Fin Keel | 1.78m | 5'-10" |
| Draft, Wing Keel | 1.35m | 4'-5" |
| Designed Wgt. Wing Keel | 6387kg | 14,100lbs |
| Ballast, Wing Keel | 2990kg | 6600lbs |
| Engine Diesel | | 30hp |
| Sail Area Rated Total Standard Rig | 51.56m sq. | 555 sq ft. |
| I | 13.64m | 44.75ft |
| J | 4.37m | 14.33ft |
| P | 11.89m | 39.00ft |
| E | 3.66m | 12.00ft |

**OPTIONAL SPECIFICATIONS**

| | | |
|-----------------------------------|------------|------------|
| Designed Wgt. Fin Keel | 6,116kg | 13,500lbs |
| Ballast, Fin Keel | 2,718kg | 6,000lbs |
| Sail Area Rated Total Tall Rig | 55.83m sq. | 601sq. ft. |
| I | 14.25m | 46.75ft |
| J | 4.37m | 14.33ft |
| P | 12.50m | 41.00ft |
| E | 3.96m | 13.00ft |

[Return to Home](#)