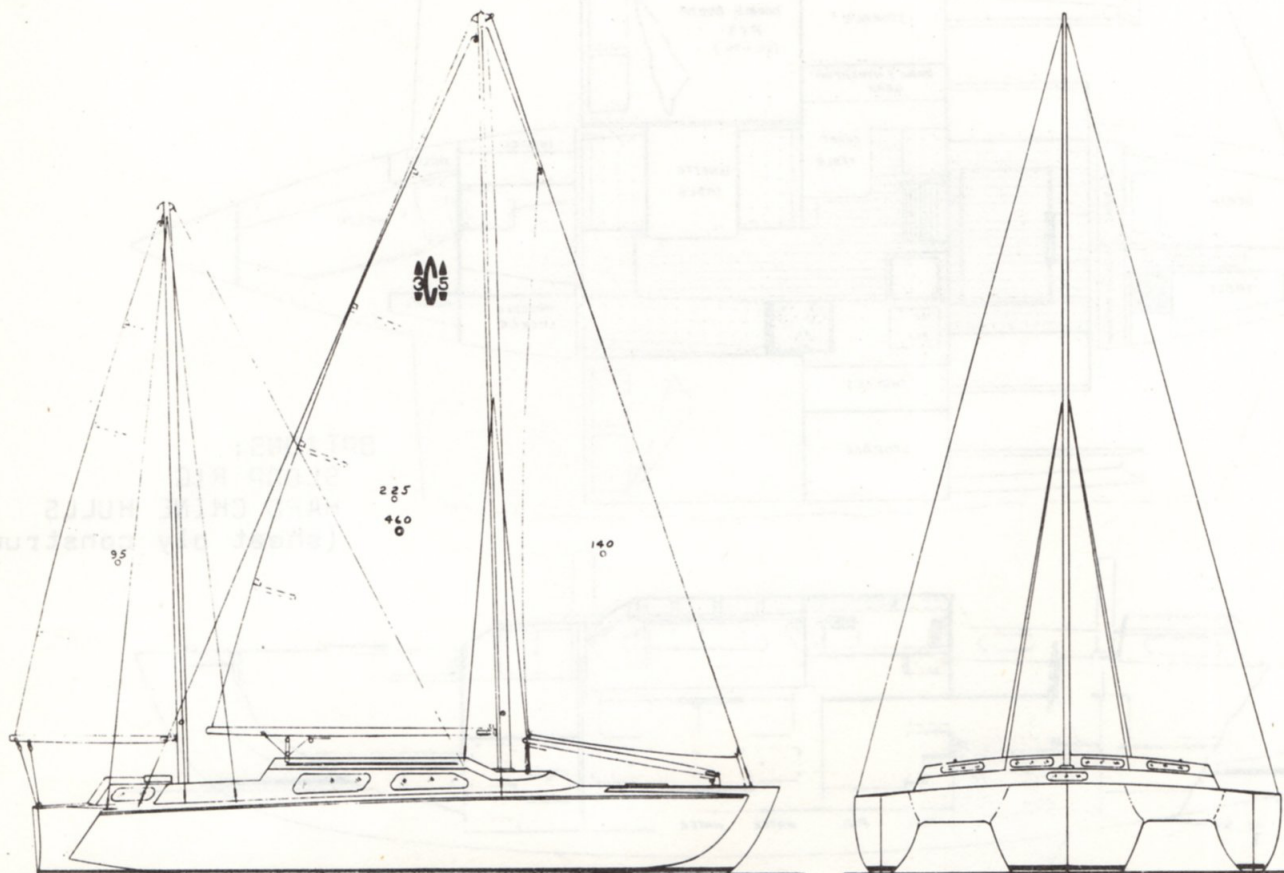


CROSS 35 TRIMARAN



SPECIFICATIONS

LENGTH OVERALL	35' 5"	DISPLACEMENT	8000 lbs.
LENGTH WATERLINE	32' 9"	PAYLOAD	2500 lbs.
BEAM	20' 2"	AUXIL. POWER	12 - 20 H. P.
DRAFT	3' 6"	NO. BERTHS	6
SAIL AREA	460 SQ. FT.	HEADROOM	6' 1"

The CROSS 35 is the latest design to be added to the ever expanding line of CROSS TRIMARANS.

It is a smaller version of the popular CROSS 38 and will give the builder a modern design to consider in the 35' to 36' range.

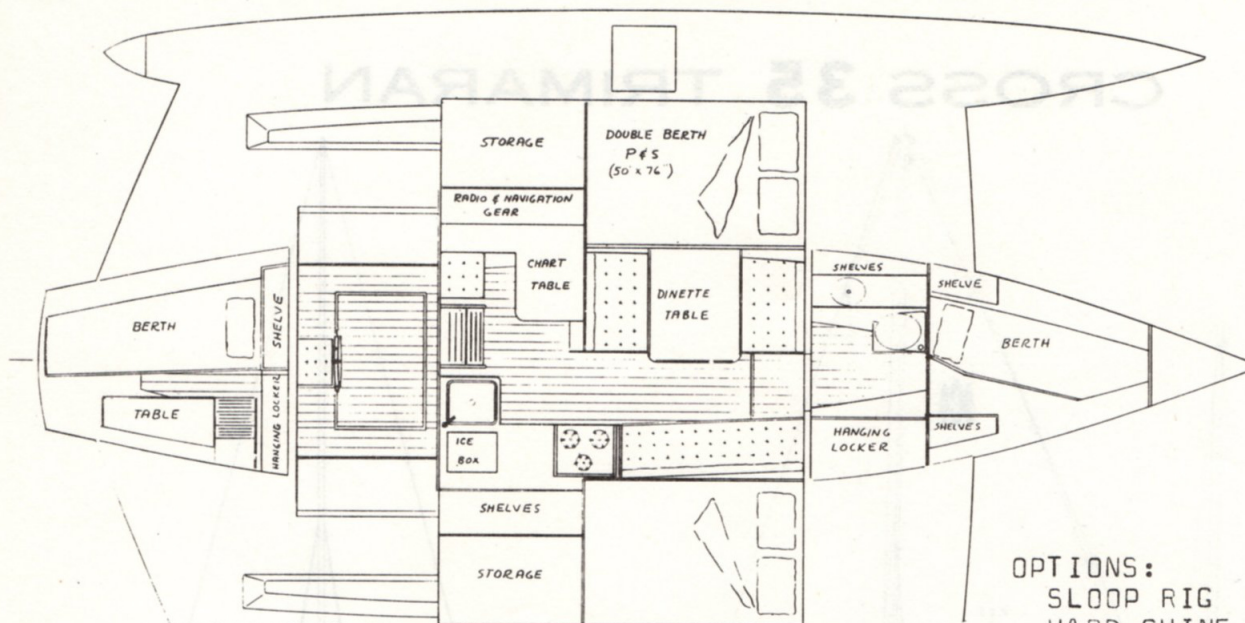
The CROSS 35 has comfortable accommodations for a party of 6 persons for week-end or vacation sailing or for 3 to 4 persons for extended cruising.

The main cabin is over 10 $\frac{1}{2}$ ft. in length and has 2 double berths (one port, one stbd) on the wing decks. The dinette seats 4 comfortably. A large galley and chart table are located to the rear.

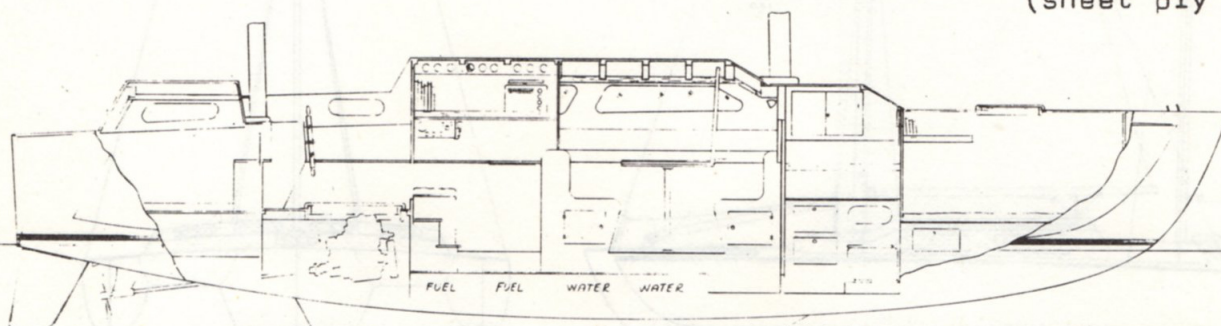
A private head with full length hanging locker separates the main cabin and the single berth forward.

A large cockpit separates the main cabin and the aft cabin.

A ketch rig provides a boat easily handled by two persons.



OPTIONS:
SLOOP RIG
HARD CHINE HULLS
(sheet ply construction)



DESIGN FEATURES

Ketch rig with moderate working sail area that is easily increased with the addition of a genoa and mizzen staysail.
Shallow draft, even with the fin keel.
Large deck space.
Deep narrow beams, having great strength for their weight, that take very little room and are relieved for easy passage.
Low aspect ratio fin keel on main hull. (protects rudder and prop.)
Floats immersed only a few inches (when level) to reduce wetted surface.
Combination of fin keel, spade rudder and low immersed floats allow the CROSS 35 to come about easily, go to weather, have good light weather capabilities and have good directional control.

CONSTRUCTION

Frames and bulkheads are laid out on and cut from sheet plywood.
Stringers and longitudinals - Douglas fir or other suitable boat lumber
Planking - Two layers of plywood, double-diagonally planked.
Beams - Marine plywood and Douglas fir.
Deck, cabin and fin keel - Plywood.
Fastenings - Bronze anchorfast nails, staples and marine glue.
All exterior surfaces covered with fiberglass, dynell or vectra.
Spars - Sitka spruce. (Aluminum optional)
Standing rigging and fittings - Stainless steel or bronze.

COST OF PLANS	\$285.00
COST OF STUDY PLANS	\$5.00
APPROX. COST TO BUILD (less sails & power)	\$7,500.00
APPROX. MAN HOURS TO BUILD	2100
FULL SIZE PATTERNS (frames & stems)	\$35.00

PLANS FROM:
NORMAN A. CROSS
4326 ASHTON
SAN DIEGO, CALIF. 92110
PHONE: (714) 276-0910