

### SPECIFICATIONS

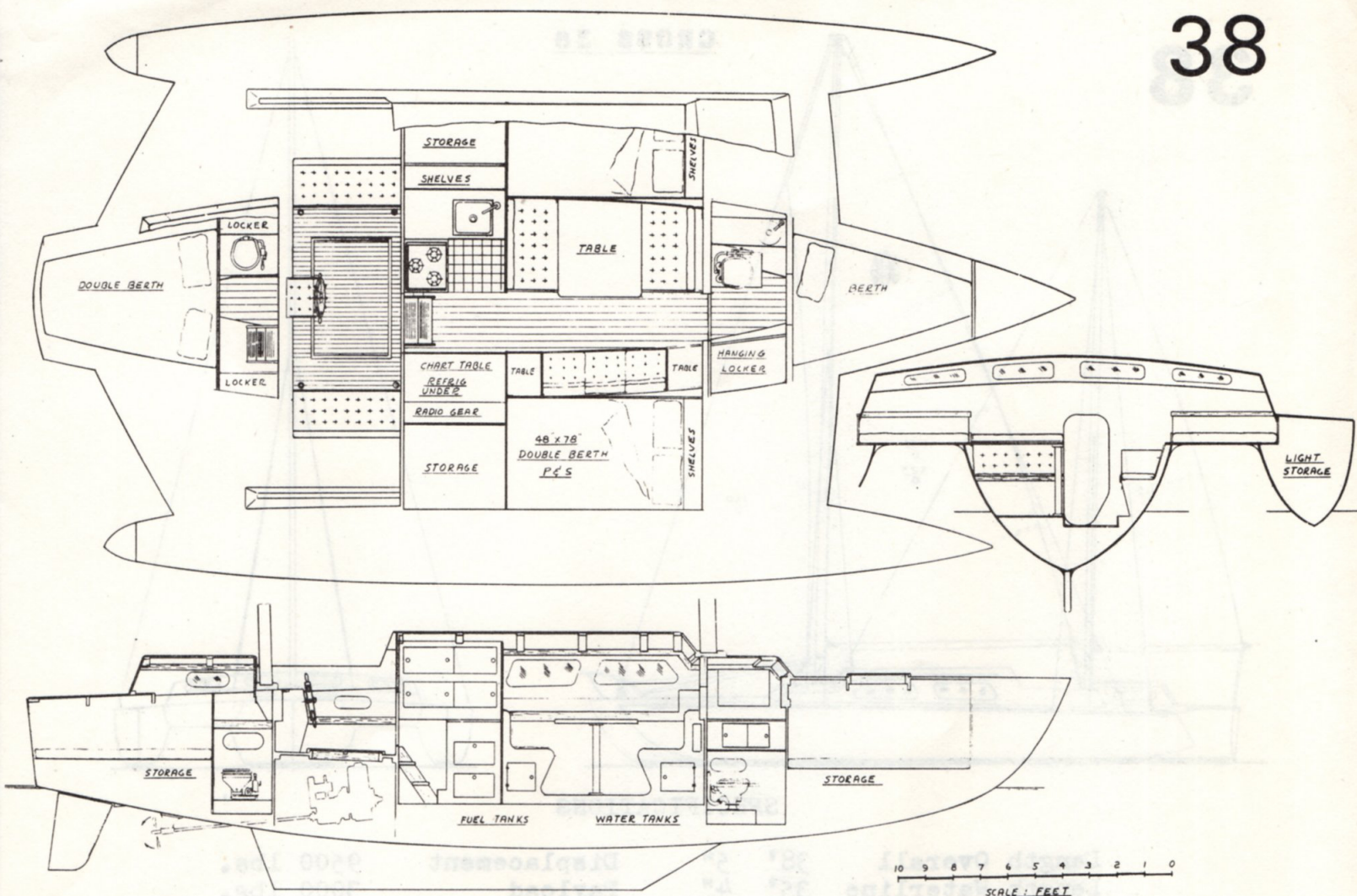
Length Overall	38' 5"	Displacement	9500 lbs.
Length Waterline	35' 4"	Payload	3000 lbs.
Beams	21' 0"	Auxil. Power	15-25 H.P.
Draft	3' 8"	No. Berths	6 - 7
Sail Area	525 Sq. Ft.	Headroom	6' 3"

### DESIGN FEATURES

Ketch rigged with moderate working sail area that is easily increased with the addition of a Gonoa and Mizzen staysail.  
 Shallow draft, even with the fin keel.  
 Main cabin 11' in length with seperate galley and dinette.  
 Double berth, port and starboard, on the wing deck.  
 Aft stateroom with private head having either a double berth or a single berth with chart table.  
 Enclosed head with hanging locker.  
 Single berth forward or storage.  
 Large deck space.  
 Deep narrow beams, having great strength for their weight, that are relieved for easy passage.  
 Light storage in outboard floats.  
 Fin keel on main hull.  
 Floats immersed only a few inches (when level) to reduce wetted surface.  
 Combination of fin keel and slightly immersed floats allow the CROSS 38 to come about easily, go to weather and have good light weather capabilities.

THREE OF THE CROSS 38 TRIMARANS BUILT IN CALIFORNIA HAVE MADE THE PASSAGE TO HAWAII. ONE OF THEM MADE THE PASSAGE IN 15 DAYS 15 HOURS. ANOTHER MADE IT BY THE WAY OF ACAPULCO, MEXICO.





### CONSTRUCTION

Frames and bulkheads are laid out on and cut from sheet plywood.  
 Stringers and longitudinals - Douglas fir or other boat lumber.  
 Planking - Two layers of plywood, double-diagonally planked.  
 Beams - Marine plywood and Douglas fir.  
 Deck, cabin and fin keel - Plywood.  
 Fastenings - Bronze anchorfast nails, staples and marine glue.  
 All exterior surfaces covered with fiberglass, dynell or vectra.  
 Spars - Sitka spruce. Aluminum optional.  
 Standing rigging and fittings - Stainless steel or bronze.

The CROSS 38 is available in either the ROUND BOTTOM or HARD CHINE (double chine main hull) HULLS.

COST OF PLANS.....\$350.00  
 COST OF STUDY PLANS..... \$5.00  
 APPROX. COST TO BUILD..... \$9,500.00  
 (less sails & power)  
 APPROX. MAN HOURS TO BUILD... 2400  
 FULL SIZE PATTERNERS..... \$40.00  
 (for frames & stems, round bottom  
 hulls only)

### PLANS FROM:

NORMAN A. CROSS  
 4326 ASHTON  
 SAN DIEGO, CALIF. 92110  
 U. S. A.

Phone: (714) 276-0910

AS OF JANUARY 1975 THERE WERE 62 CROSS 38 TRIMARANS BUILDING OR SAILING.



## SPECIFICATIONS

Length Overall	38' 5"	Displacement	9500 lbs.
Length Waterline	35' 4"	Payload	3000 lbs.
Beams	21' 0"	Auxil. Power	15-25 H.P.
Draft	3' 8"	No. Berths	6 - 7
Sail Area	525 Sq. Ft.	Headroom	6' 3"

## DESIGN FEATURES

Ketch rigged with moderate working sail area that is easily increased with the addition of a Gonoa and Mizzen staysail.  
 Shallow draft, even with the fin keel.  
 Main cabin 11' in length with seperate galley and dinette.  
 Double berth, port and starboard, on the wing deck.  
 Aft stateroom with private head having either a double berth or a single berth with chart table.  
 Enclosed head with hanging locker.  
 Single berth forward or storage.  
 Large deck space.  
 Deep narrow beams, having great strength for their weight, that are relieved for easy passage.  
 Light storage in outboard floats.  
 Fin keel on main hull.  
 Floats immersed only a few inches (when level) to reduce wetted surface.  
 Combination of fin keel and slightly immersed floats allow the CROSS 38 to come about easily, go to weather and have good light weather capabilities.

## CONSTRUCTION

Frames and bulkheads are laid out on and cut from sheet plywood.  
 Stringers and longitudinals - Douglas fir or other boat lumber.  
 Planking - Two layers of plywood, double-diagonally planked.  
 Beams - Marine plywood and Douglas fir.  
 Deck, cabin and fin keel - Plywood.  
 Fastenings - Bronze anchorfast nails, staples and marine glue.  
 All exterior surfaces covered with fiberglass, dynell or vectra.  
 Spars - Sitka spruce. Aluminum optional.  
 Standing rigging and fittings - Stainless steel or bronze.

As of May, 1972 there are 45 of the CROSS 38's building or sailing.

Two CROSS 38's cruised to Hawaii from Los Angeles in the summer of 1970. One of them made the trip in 15 days, 15 hours.

The CROSS 38 is available in either the ROUND BOTTOM or HARD CHINE (double chine main hull) HULLS.

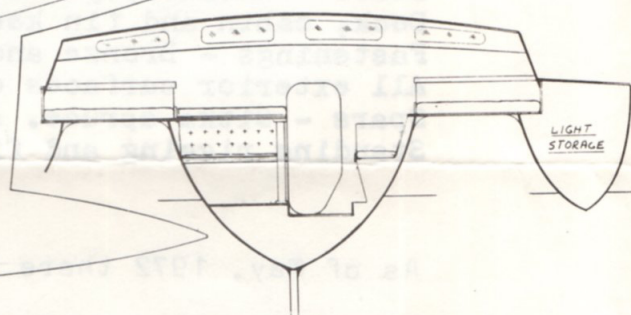
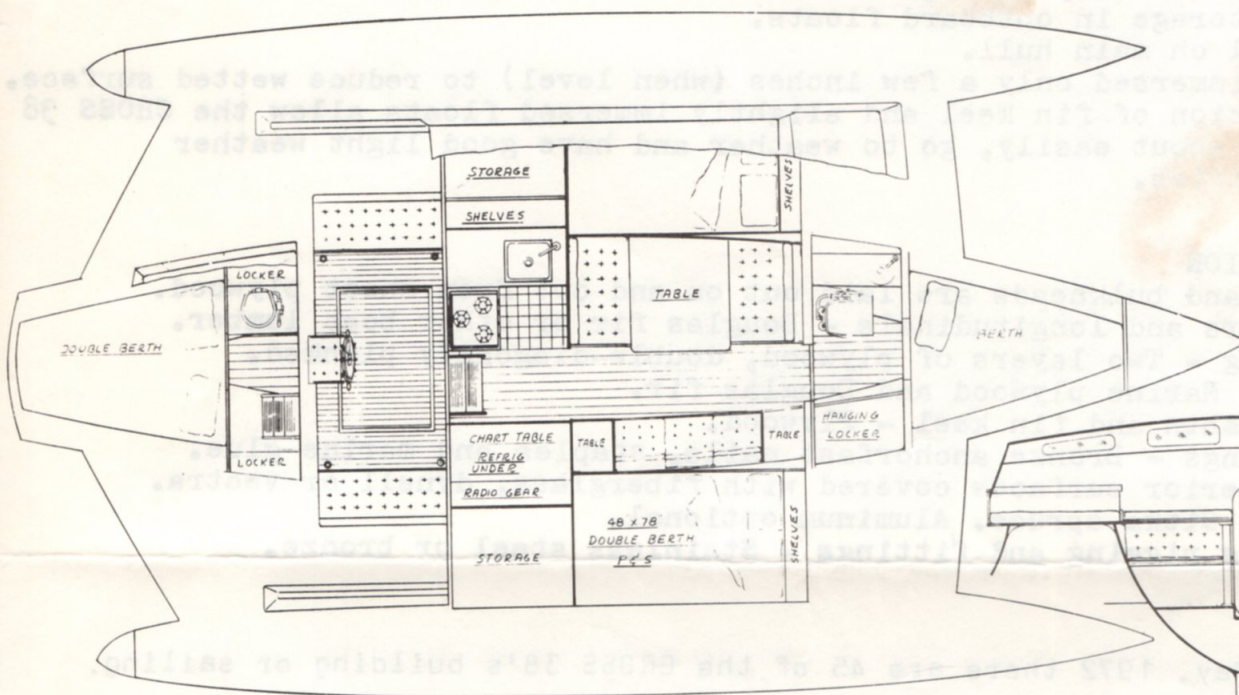
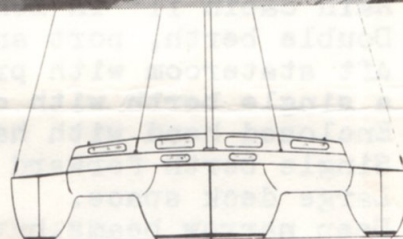
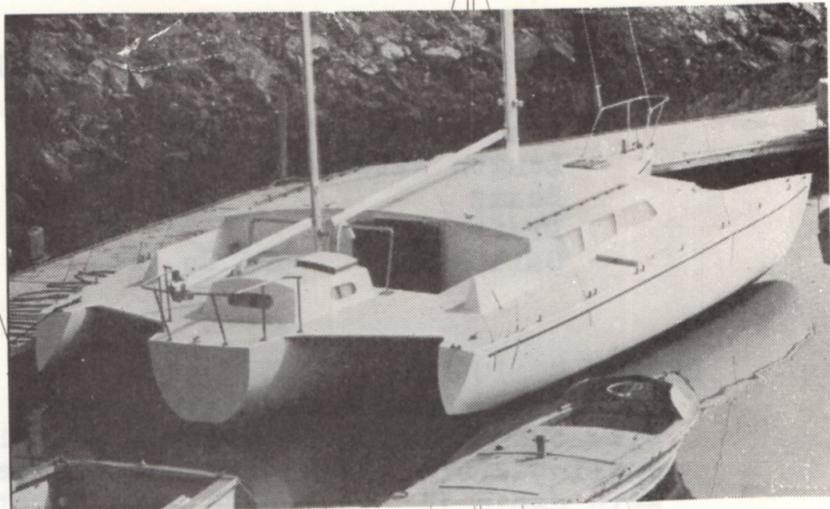
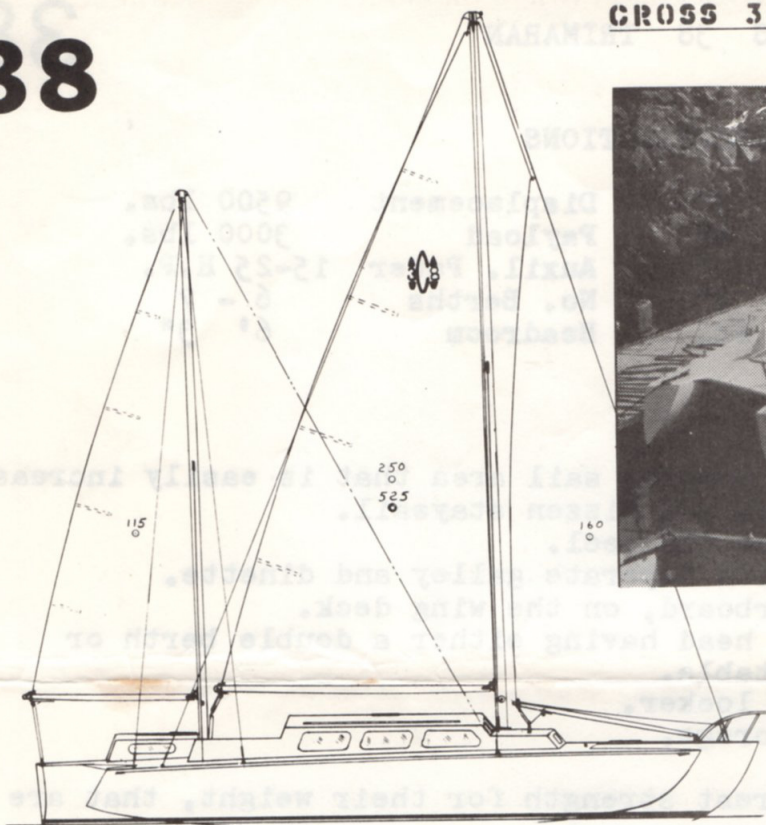
COST OF PLANS.....\$325.00  
 COST OF STUDY PLANS..... \$5.00  
 APPROX. COST TO BUILD.....\$6800.00  
 (less sails & power)  
 APPROX. MAN HOURS TO BUILD..... 2200  
 FULL SIZE PATTERNERS.....\$30.00  
 (for frames & stems, round bottom  
 hulls only)

## PLANS FROM:

NORMAN A. CROSS  
 4326 ASHTON  
 SAN DIEGO, CALIF. 92110  
 U. S. A.

Phone: (714) 276-0910





SECTION THROUGH MAIN CABIN  
LOOKING FORWARD

