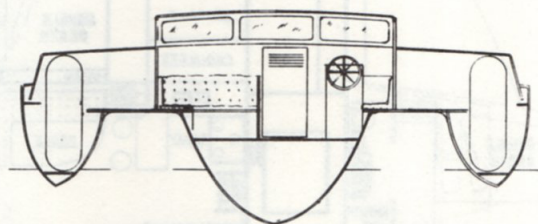
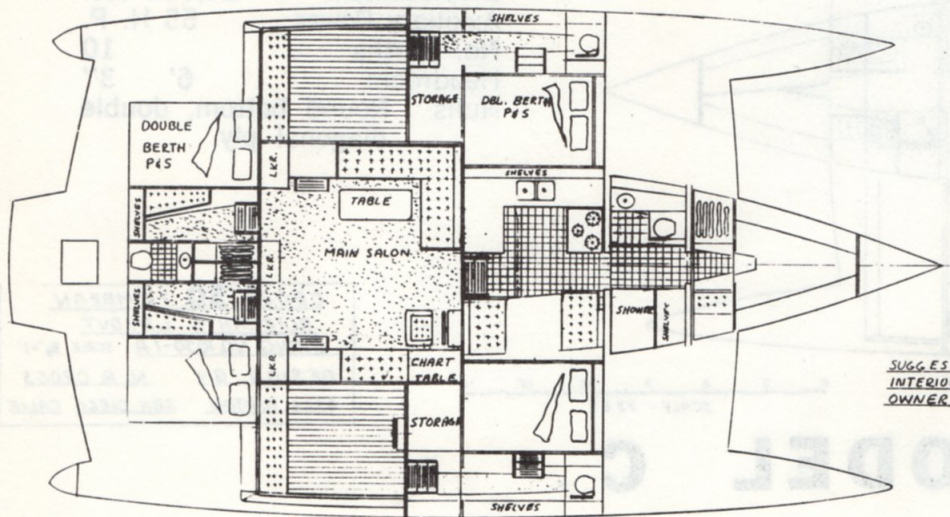
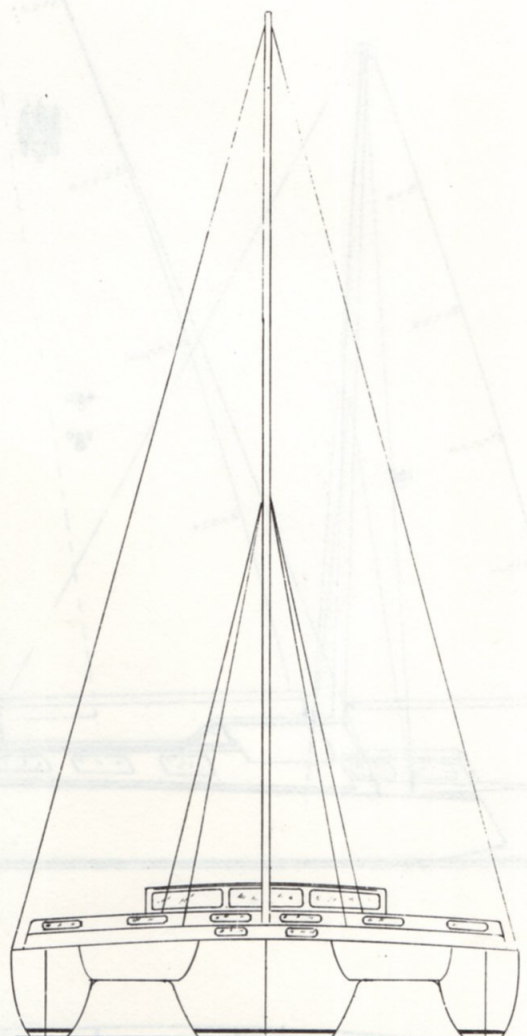
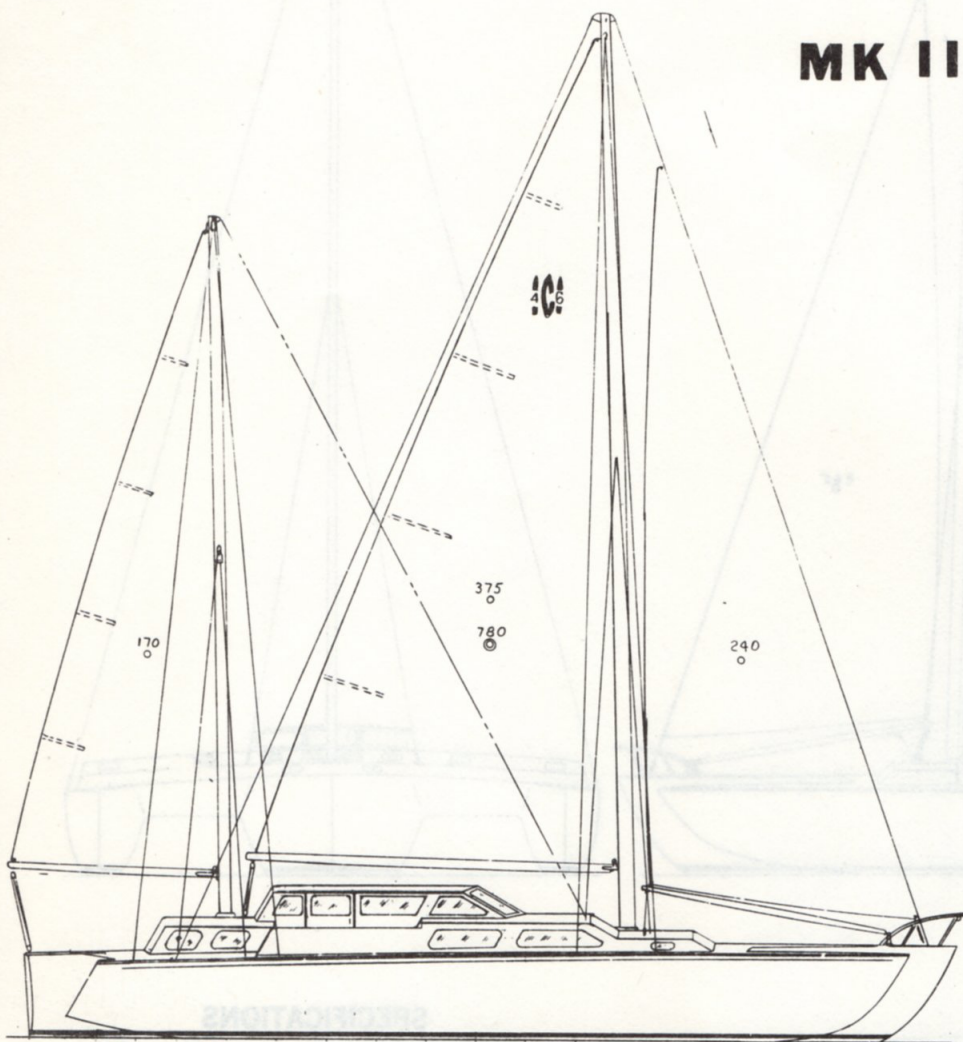


CROSS 46

MK II



SECTION THROUGH MAIN CABIN

MODEL B

THIS MODEL IS AVAILABLE
FOR THE CROSS 50

SUGGESTED INTERIOR LAYOUT SHOWN
INTERIOR MAY BE MODIFIED TO SUIT
OWNER'S REQUIREMENTS

MODIFICATION "B" MODEL

CROSS 46 TRIMARAN
GENERAL LAYOUT

DRWG NO 746-1B SCALE: 3/8"=1'

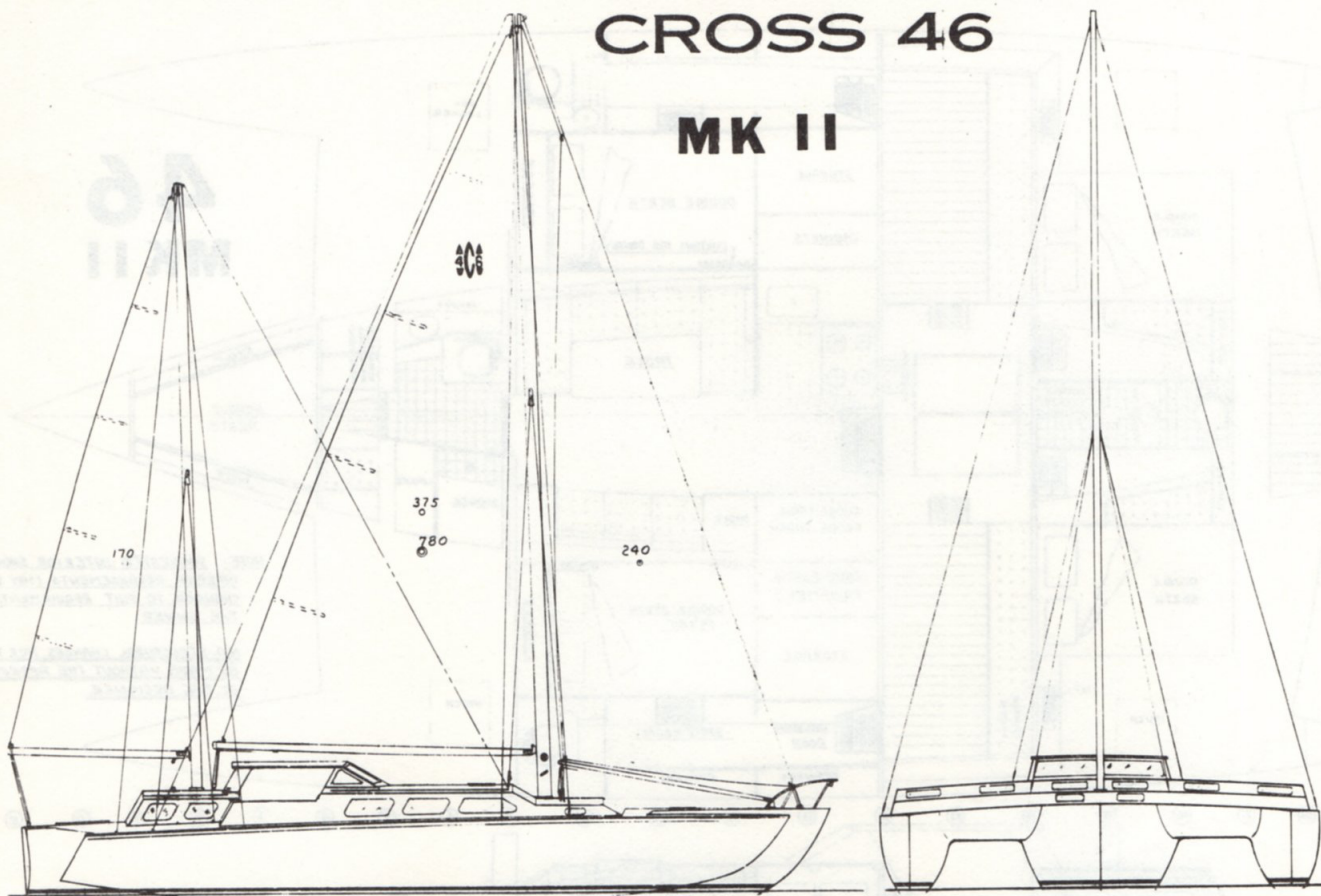
DESIGN BY N.A. CROSS

SAN DIEGO, CALIF.

12' 10' 8' 6' 4' 2' 0'
SCALE IN FEET

CROSS 46

MK II



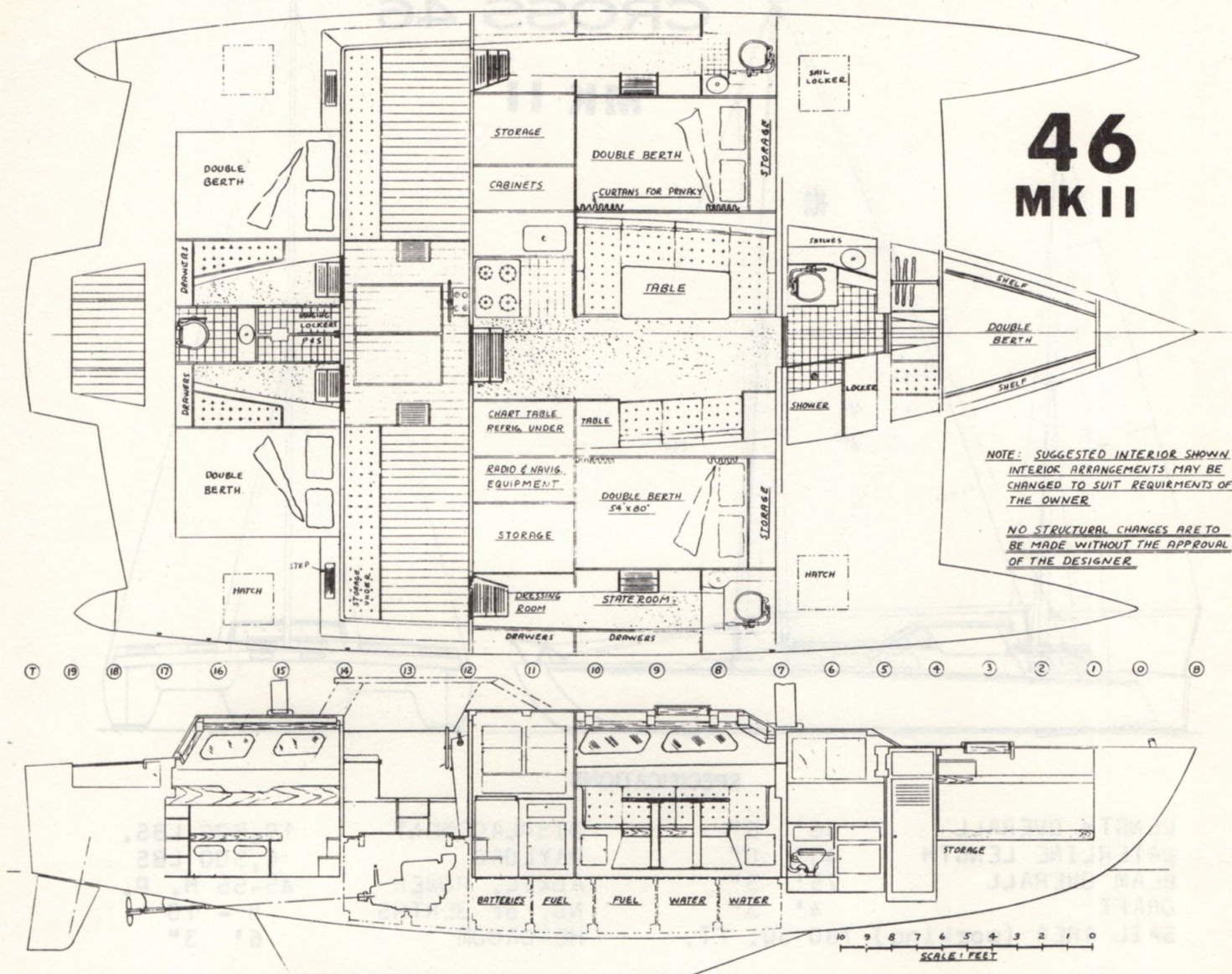
SPECIFICATIONS

LENGTH OVERALL	46' 6"	DISPLACEMENT	19,500 LBS.
WATERLINE LENGTH	43' 0"	PAYLOAD	6,500 LBS
BEAM OVERALL	25' 3"	AUXIL. POWER	45-55 H. P.
DRAFT	4' 3"	NO. of BERTHS	8 - 10
SAIL AREA (working)	780 SQ. FT.	HEADROOM	6' 3"

DESIGN FEATURES

The CROSS 46 is designed to accomodate a party of 8 to 10 persons and is an ideal boat for CRUISING, LIVE ABOARD or CHARTER WORK. Privacy, which is essential aboard any boat, is assured in the five double staterooms, two of which have their own private head. The main cabin is 12 1/2' long and has ample room for the dinette and galley areas. The forward cabin is seperated from the main cabin by the head and shower. The two rear staterooms are seperated from the main cabin by a cockpit which is the full width of the boat. Access to the rear staterooms is made directly from the cockpit. A head and hanging locker seperate the two rear cabins. A recreation cockpit is located in the stern of the main hull and is ideal for fishing, swimming or skin diving. The large deck area is well suited for sail handling, moving about or sunning. There is plenty of storage space located throughout the boat.

The combination of the ketch rig with a moderate working sail area, low aspect ratio fin keel and spade rudder will provide a boat that is easy to handle. It will have good directional stability and come about easily. The sail area can be increased with the addition of a genoa and mizzen staysail. Even with the fin keel the draft is not excessive.



CONSTRUCTION

The hulls are of the round bottom type using the double/diagonal plywood planking.

Frames are laid out on, and cut from sheet plywood.

Bulkheads are plywood and Douglas fir (or other boat building lumber).

Beams are marine plywood and Douglas fir.

Stringers and longitudinals are Douglas fir (or other boat building lumber).

Deck, cabin and fin keel are plywood.

Fastenings are bronze anchorfast nails, staples and marine glue.

All exterior surfaces are covered with fiberglass, dynell or vectra.

Spars are spruce (aluminum optional).

Standing rigging and fittings are stainless steel or bronze.

COST OF PLANS \$550.00

COST OF STUDY PLANS \$5.00

APPROX. COST TO BUILD \$19,000.00

(less sails & motor)

APPROX. MAN HOURS TO BUILD 3,600

ORDER PLANS FROM:

NORMAN A. CROSS

4326 ASHTON

SAN DIEGO, CALIF. 92110

PHONE: (714) 276-0910

AS OF JANUARY 1975 THERE WERE 53 CROSS 46 TRIMARANS BUILDING OR SAILING