

OBJECT OF THE CLASS RULES
this is a one design class. The Rules, Plans, and Specifications are intended to ensure that in the hull form, weight, scantlings, sail colour, deck plan, the boats are as nearly alike as possible with variations in cockpit layout and fittings as alternatives on lists and plans. All boats shall be built according to the plans and rules in all respects.

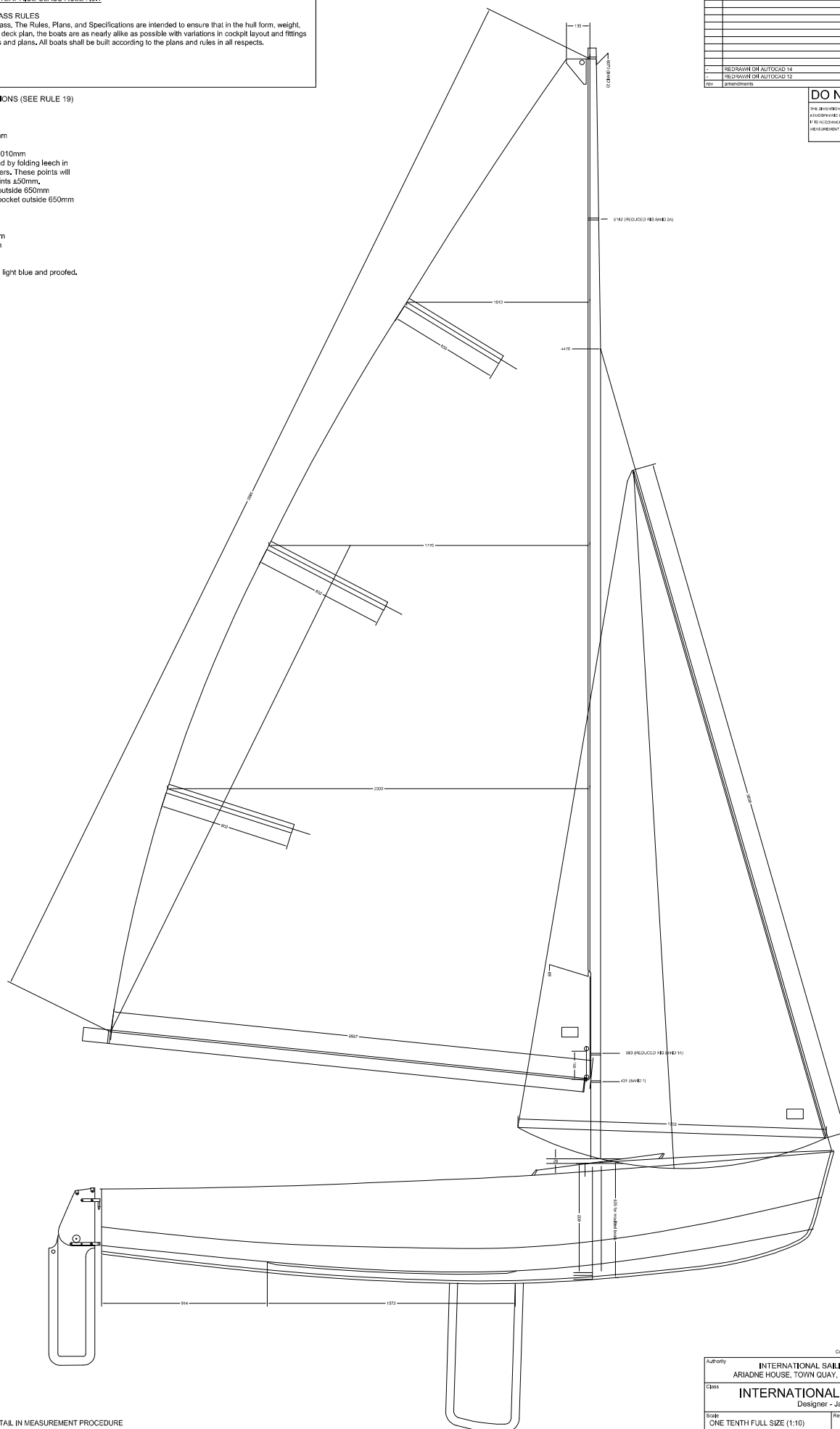
Main (Full Rig)
Luff 5985mm
Quarter width 2330 mm
Half width 1770 mm
Three quarter width 1010mm
Leech points are found by folding leech in half and then in quarters. These points will also be the batten points ± 50 mm.
Length of top batten outside 650mm
Length of top batten pocket outside 650mm

Luff length 3836mm
Leach length 3684 mm
Foot Median 3861mm
Foot length 1702mm

Sails must be in dyed light blue and proofed.

[illegible]

THE DIMENSIONAL ACCURACY OF THIS PRINT MAY VARY DUE TO ATMOSPHERIC CONDITIONS AND REPRODUCTION METHODS
IT IS RECOMMENDED THAT FORMERS BE CHECKED AGAINST THE MEASUREMENT FORM BEFORE COMMENCING CONSTRUCTION



BILGE KEEL SEE DETAIL IN MEASUREMENT PROCEDURE
(YEAR BOOK 1999 PAGE 82)

Copyright © **Final Issue 12/01/01**

Authority	INTERNATIONAL SAILING FEDERATION ARIADNE HOUSE, TOWN QUAY, SOUTHAMPTON, SO14 2AQ		
Class	INTERNATIONAL ENTERPRISE Designer - Jack Holt		
Scale	ONE TENTH FULL SIZE (1:10)	Ref	SHEET 9
Take	SAIL PLAN-CRITICAL DIMENSIONS		