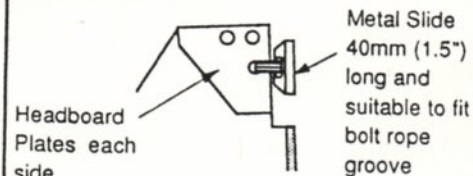


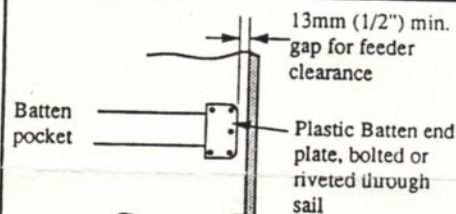
Sail	Luff	Leach	Foot	Wgt.	Area
Mainsail	9090 29' 10"	9434 30' 11" Wing mast 9358 (30' 9")	3440 11' 3" Wing mast 3190 (10' 5")	300gm 7.2oz	22.7sq. m. 245sq. ft.
Jib	8640 28' 4"	7636 25'	2910 9' 7"	300gm 7.2oz	11.3sq. m. 122sq. ft.
Genoa	8640 28' 4"	7600 24' 11"	3790 12' 5"	180gm 4.4oz	14.8sq. m. 160sq. ft.
Asymetric Spinnaker	10230 33' 7" Vert. Hoist 8488/27' 10"	8480 27' 10"	6416 21' 1" JC 3950/13'	35gm N 0.8oz N	56sq. m. 600sq. ft.

Mast can be fixed or rotating, sails to be made to suit system chosen.

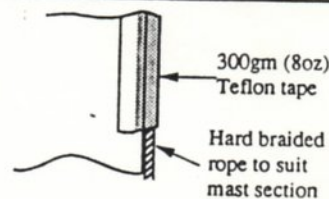
Gougeon 050A Wing Mast is an option



HEADBOARD DETAIL



BATTEN END DETAIL



MAIN LUFF TAPE: to be 300gm Teflon Tape or similar over solid braided rope to suit mast section
MAIN FOOT TAPE: to be 300gm tape over solid braided rope to suit boom section.

NOTES:

Mylar may be used for all sails (recommended). Sailcloth wgt. may be varied to suit wind in area sailed.

All sails are to be fitted with telltales
Tack and Clew cutaways to be as shown
Mainsail has 2 sets of reefpoints positioned as shown

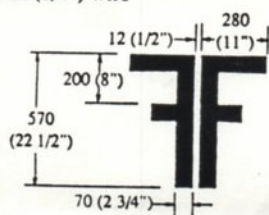
Max. Mainsail roach is 1120 (44") located 65% up leach. 990 (39") with wing mast

Mainsail to have Cunningham eye fitted
Class emblem to be located and sized as shown.

Mainsail battens to be angled as shown for easy roller furling

Jib to have 3 leach battens placed at equal distance on leach. 3 Leach battens are optional: on Genoa

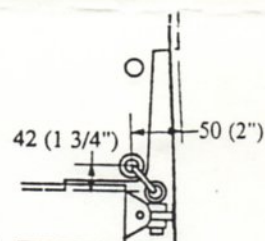
Foresail hanks to be bronze and for 6mm (1/4") wire



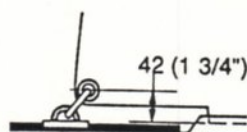
SAIL NO. 5

1120 (44")
990 (39")
with wing mast max.
Roach

$\frac{1}{4} = 12"$



TACK POSITION
(For Roller Furling)



CLEW POSITION

100 (4") max

Sailmaker should be aware that the loadings on a Multihull's sails are considerably higher than an equivalent monohull due to the much greater maximum stability (27,000ft. lbs)

All Metric Dimensions are in Millimetres

Revised March 24, 1992

Scale 1:36

F-25A Sheet 49

SAIL PLAN

A Design By Ian Farrier

P.O. Box 7962, Chula Vista, CA 91911, U.S.A.