



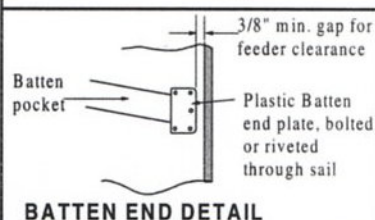
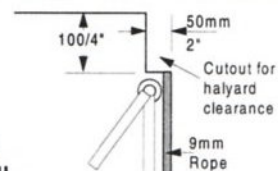
Sail	Luff	Leach	Foot	Material	Area
Mainsail	33' 4"	35' 1"	12' 10"	Mylar	317sq.ft.
Jib	33' 9"	30' 2"	11' 7"	Mylar	185sq.ft.
Genoa	33' 9"	30' 8"	16' 1"	Mylar	272sq.ft.
Asy. Spinn.	39' 8"	36'	26' 11"	Nylon	772sq.ft.
Screacher	34' 10'	31' 9"	21'	Mylar	343sq.ft.
Storm Jib	17'	12' 11"	9' 11"	Mylar	59sq.ft.
R. Furling Genoa	31' 9"	29' 11"	15' 8"	Mylar	231sq.ft.

# RECOMMENDED MAINSAIL CAMBER:

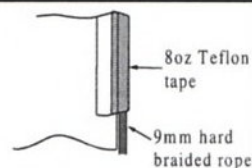
Top Third 10% at 44% aft  
Middle 12% at 48% aft  
Bottom Third 6% at 46% aft

Recommended mast pre-bend is 3"  
Maximum headstay tension is 2700lbs.  
Luff sag is 4-5"

# HEAD DETAIL



# BATTEN END DETAIL



**MAIN LUFF TAPE:** to be 8oz Teflon Tape or similar over 9mm solid braided rope

**MAIN FOOT TAPE:** to be 8oz tape over 9mm solid braided rope.

# NOTES:

All sails are to be fitted with telltales  
Tack and Clew cutaways to be as shown  
Mainsail has 2 sets of reefpoints, to be positioned as shown  
Mainsail to have Cunningham eye fitted  
Mainsail wear patches may be fitted as shown  
Mainsail battens to be angled as shown for easy roller furling  
Jib to have four leach battens placed at equal distance on leach. Four Leach battens on Genoa are optional  
Foresail hanks to be bronze and for 1/4" wire  
Roller furling sails to have #6 Luff tape for Harken Unit 1 Series B Roller Furler.

# 1996 F-27® Class Rules:

## Mainsail

Max. Main Head Width (MHW) = 31'  
Maximum P (Luff) = 33' 4"  
Maximum E (Foot) = 12' 10"  
Maximum 1/4 P girth = 7' 4"  
Maximum 1/2 P girth = 10' 3"  
The mainsail shall be attached to the mast with a bolt rope and/or slugs.  
The mainsail shall be roller reefing and furling.

## Headsails (Jib & Genoa)

Number of headsails carried within these measurements is left to the owners discretion.

Maximum Luff = 33' 9"  
Maximum Luff Perp. (LP) = 15' 6"

## Spinnaker

Total length of luff, leech, foot and mid-girth combined not to exceed 125 feet.

## Screacher

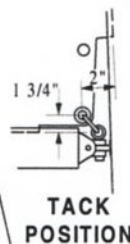
Maximum Luff = 35'  
Maximum Luff Perp. (LP) = 19'  
Maximum mid-girth = 10' 10"

## Bow Pole

Max length shall not exceed 66" from top of molded deck to furthest fwd. tip of spar.



# CLEW POSITION



# TACK POSITION

# 1996 F-27® SAILPLAN

Drawn by Ian Farrier

Revised June 12, 1996

F-27 is a registered Trademark of Ian Farrier

Sailmaker should be aware that the loadings on a Multihull's sails are considerably higher than an equivalent monohull due to the much greater maximum stability (29,000ft. lbs)

**CORSAIR MARINE**  
150 Reed Ct., Chula Vista,  
CA 92011. Ph. (619) 585 3005