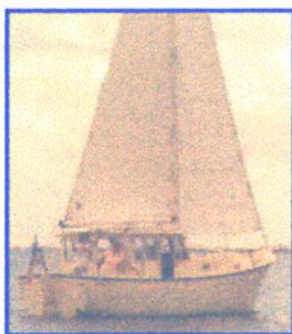


KODIAK... a 29' fiberglass motorsailer Build in FIBERGLASS

CHARACTERISTICS

Length overall (on deck minus bowsprit): 28'-6"
 Length waterline: 25'-5"
 Beam: 9'-11"
 Draft (board down): 4'-0"
 Freeboard forward: 5'-3", Freeboard aft: 3'-5"
 Displacement: 11,000 lbs., Ballast weight: 4200 lbs.
 Headroom (nominal): 6'-4", Height (to cabin top): 11'-2"
 Sleeping accommodations: 5
 Cockpit size (nominal): 5'-6"x8'-0", Deckhouse size: 6'-3"x6'-9"
 Fuel capacity: 60 gals., Fresh water capacity: 60 gals.
 Range (approx. under power only): 500 miles
 Sail area: Main-190 sq. ft., Jib-167 sq. ft., Foretriangle-194 sq. ft., Total: 357/384 sq. ft.
 Hull type: Full displacement round bilge hull form with maximum hull speed of 7 knots. Designed for "one-off" fiberglass construction using either PVC foam sandwich core or fiberglass planking with fiberglass laminates.
 Ballast: Lead preferred, steel optional.
 Sail type: Masthead sloop rig with self-tacking jib. Other head sails optional.
 Power: Single diesel or gasoline powered engine of approx. 15 continuous horsepower (20 to 30 bhp), not exceeding 500 lbs. through straight shaft to max. 24" dia. propeller.



AVAILABLE FOR THE KODIAK:

Plans & Patterns:
\$181.00

Study Plan: \$10.00

If you're disillusioned by fuel guzzling powerboats, or tired of temperamental rule-beating sailboats, or just a lover of the sea looking for a sensible, easy to handle, economical vessel capable of cruising in just about any waters with safety, the KODIAK may be your boat. This motorsailer has an effective combination of power and sail to maintain speeds up to 7 knots even in rough seas over a range beyond most powerboats. Since she's not subject to the whims of the wind, you can plan your schedule more closely whether for weekend jaunts or for extended vacation voyages. Plus, you'll travel in comfort due to the motion dampening action of the sails coupled with a stiff, stable hull having a healthy percentage of ballast.

The KODIAK has accommodations and features that belie her modest dimensions. There are individual berths for five people in three separate cabins, two hanging lockers, an enclosed head with shower, a complete galley with a huge ice box, and an abundance of storage space for all the gear normally required for extended family cruising. Features for safety,

common, and ease of handling have been given special consideration. For example, wide walk-around decks with protective bulwarks together with cabin top grab rails make access to any part of the vessel quick and safe, plus simplify the handling of sails, lines, and ground tackle. The simple, reliable sloop rig with self-tacking jib as well as the helm can all be controlled from either the deckhouse or from the deep, spacious, self-bailing cockpit. No expensive winches are required, and the straight leech of the sails means that troublesome sail battens are unnecessary.

The construction of the KODIAK is rugged and strong. The hull is intended for construction in fiberglass using the "one-off" processes, either fiberglass planking or foam sandwich core, together with fiberglass laminate. Either method is well suited to the experienced amateur or small custom yard. Balance of the structure utilizes conventional materials and fiberglass materials. Study plans are available for those who desire a more comprehensive description of the vessel as noted on this page.
