



The Iona
Thirty-Two Mark II

The new Iona 32 Mark II is built for the yachtsman who wants to combine cruising pleasure with a competitive hull design. Her proven hull of hand laminated fiberglass and quality materials assures the owner of even hull thickness and safety in any weather.

The rich warm mahogany interior, color coordinated fabrics, and distinctive built-ins will give the discriminating owner pride of ownership. She sleeps six in her spacious cabin with ample storage space for all your gear. Compare the Iona 32 Mark II with any sailboat in her class and you will see for yourself why Iona is the leading manufacturer of quality yachts.

THE STANDARD YACHT:

Color

Your choice of Mist Blue, Seafoam Green, Tangerine, Sail White or Yucatan Yellow cast into the hull and deck.

Hull

Hand-laminated reinforced fiberglass with integral lead ballast, extra reinforced roving in area of keel, headstay and backstay, integral laminated chain plates, and opaque gel-coat back-up.

Deck

One piece hand-laminated plywood reinforced fiberglass with molded non-skid surface where required, and including:

- a. Extra large self draining divided cockpit and helm station
- b. 2 seat hatches with locking hasps
- c. Integral molded winch islands
- d. Sliding main hatch
- e. Fore deck hatch

Rigging

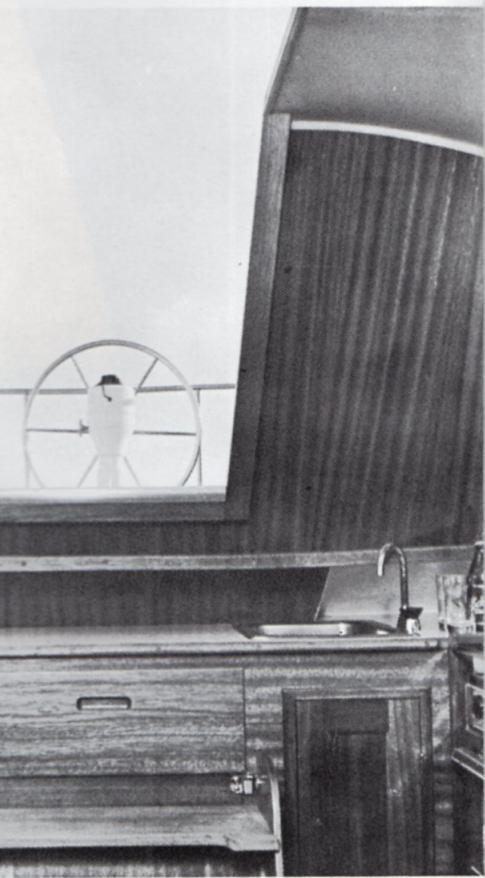
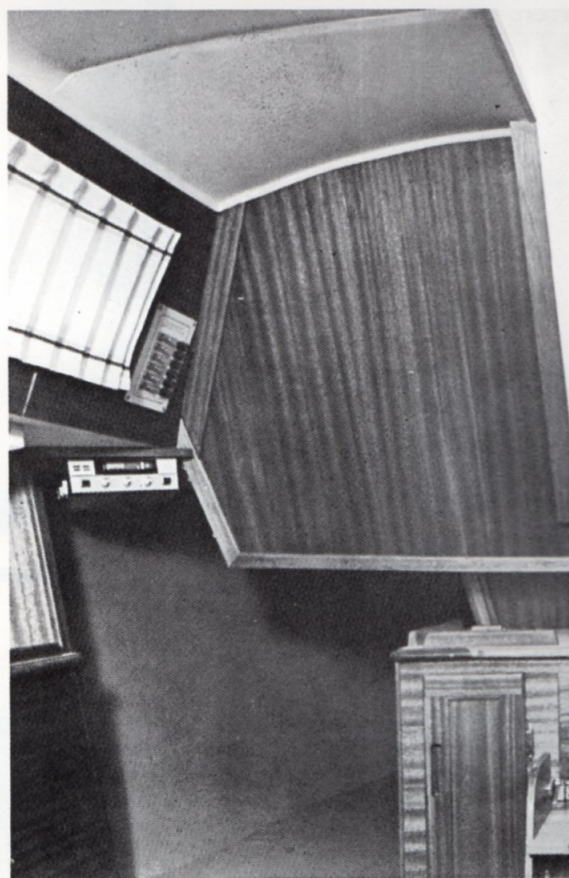
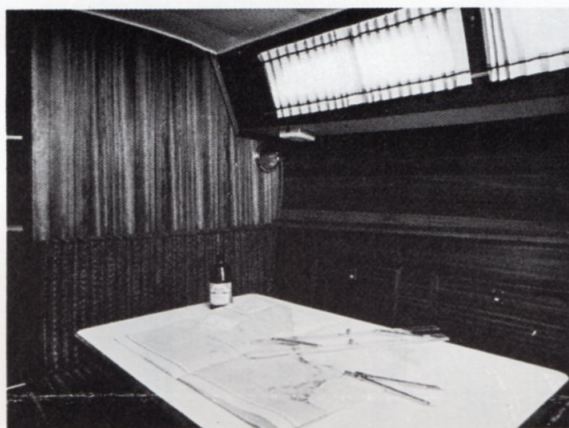
Aluminum mast and boom
Aluminum spreaders
Double lower shrouds
Stainless steel standing rigging with swaged fittings
Stainless steel turnbuckles
Stainless steel chain plates
Stainless steel mast tangs and fittings
Welded mast head box

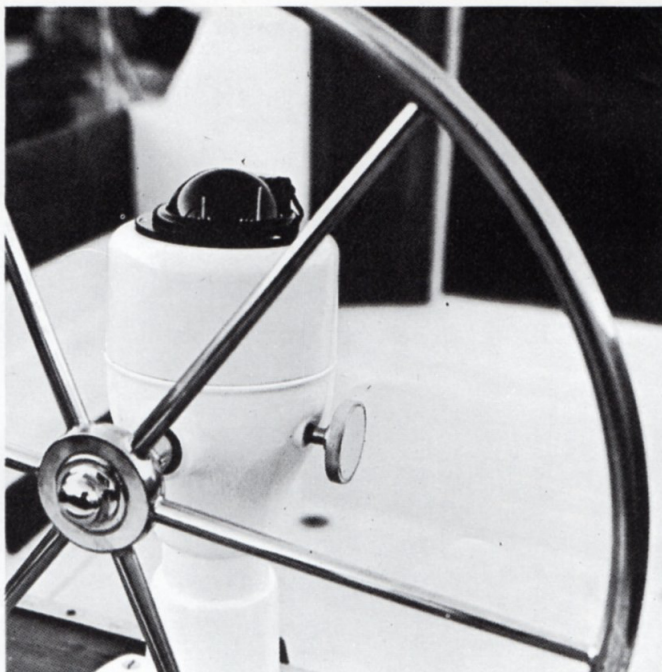
Running Rigging

Tailed yacht braid and stainless steel main and jib halyards
Yacht braid main and jib sheets, topping lift, main outhaul and downhaul

Winches

- *Two No. 16 sheet winches (chrome)
- *One No. 14 main halyard winch (chrome)





*One No. 14 jib halyard winch
(chrome)
One winch handle to accommodate
winches (chrome)

Note

*Barlow or equivalent winches

Power

30 H.P. auxiliary gasoline engine
Fuel filter
40 amp alternator/generator
Monel propeller shaft (3/4 inch)
Cockpit instrument panel (amp
meter, oil pressure, water temp.)
Blower installation
Engine controls

Electrical Equipment

12-volt battery with safety switch
International navigation lights (bow,
port, starboard, and stern)
Masthead light
Interior cabin lights
12-volt fuse panel

Tanks

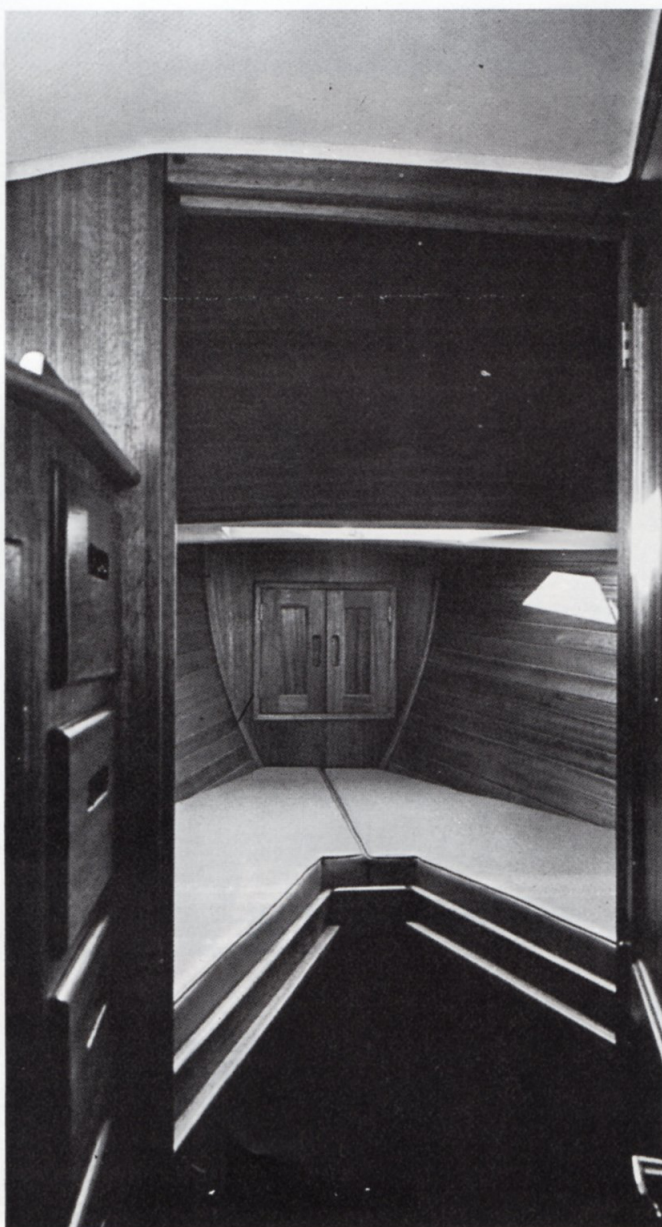
25 gallon fresh water (plastic tank)
30 gallon fuel tank, with fuel
shut-off valve

Exterior

Main sheet traveler with car and
stops
4 part main sheet swivel with cam
cleat
Fore and aft cowl vents
Oiled teak toe rail, hand rails and
trim
Bow and stern chocks (chrome)
Mooring cleats (chrome) 8"
Two 6 foot jib tracks (stainless steel)
Bottom paint, anti fouling
Flush thru hulls on self bailing
cockpit and helm station
Downhaul, outhaul, main, jib and
topping lift cleats (chrome)
Laminated ash and mahogany tiller

Interior

6'6" vee berth
Two 6'2" berths
Convertible dinette (converts to 6'6"
double berth)
Six aluminum framed windows
Mahogany interior with plugged
screw holes
Mahogany strip planked hull interior
Insulated headliner
Electric bilge pump with float
control
Color coordinated cushions (3"
foam), curtains and nylon carpet
Two large hanging lockers
30 drawers, cabinets and storage
compartments with sealocks
Bronze or stainless steel fasteners
throughout
Liquor locker with folding top
Chain locker (forward)
Formica covered counters and table
top
Sea rails on shelves and counters



Head

Vanity and mirror
Stainless steel sink
Marine head
Fresh water hand pump, counter
mounted

Galley

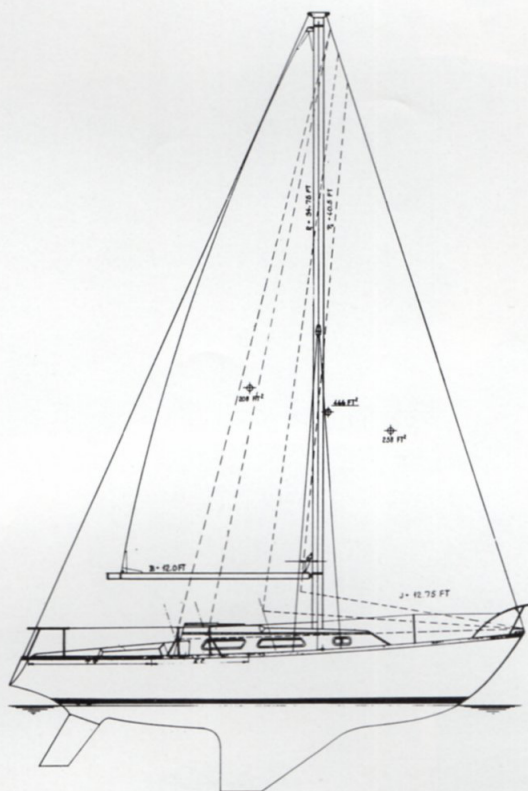
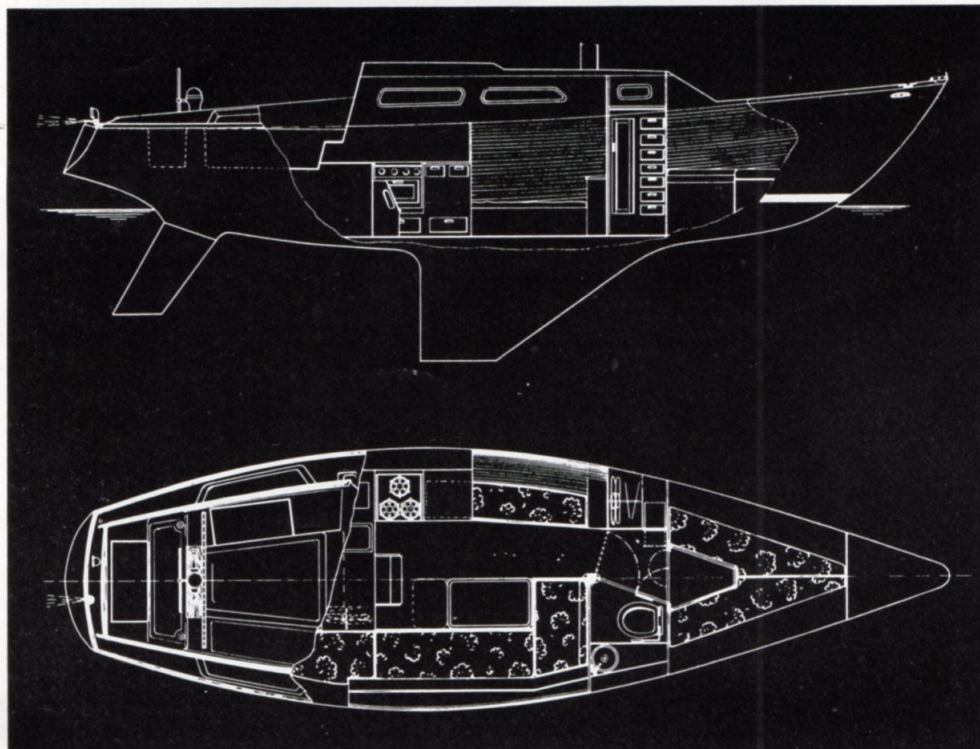
75 pound insulated icebox
Fresh water hand pump, counter
mounted
Stainless steel sink

IONA YACHTS

WARRANTY POLICY

IONA YACHTS: For a period of twelve months (12) from the date of sale to the first use purchaser, will through its selling dealer repair or replace any part manufactured by it (except hereinafter provided) which is proven to Iona's satisfaction to be defective by reason of faulty workmanship or materials, if such part is promptly returned to the dealer with a sum sufficient to pay transportation charges to such point of manufacture as Iona may designate.

For the first twelve months from the date of sale to the first use purchaser, will through its selling dealer reimburse the purchaser for the labor costs involved in the removal of the defective parts and the reinstallation of repaired or replaced parts, provided that the labor cost reimbursed will be based on a Flat Rate Schedule established by Iona Yachts, and where not applicable on a reasonable number of hours as determined by Iona Yachts. In either instance labor will be paid at the regional labor rate.



Specifications

| | | | |
|-------------|--------|----------------------|-------------|
| LOA | 32' 4" | Ballast (lead) | 3,400 lbs. |
| LWL | 24' 9" | Displacement | 8,300 lbs. |
| Beam | 9' 6" | Sail Area (Main + | |
| Draft | 5' 6" | 100% foresail) | 466 sq. ft. |

Price and specifications subject to change without notice.



IONA YACHTS
1736 E. Borchard
Santa Ana, Calif. 92705
(714) 835-5618