

J/44 Offshore

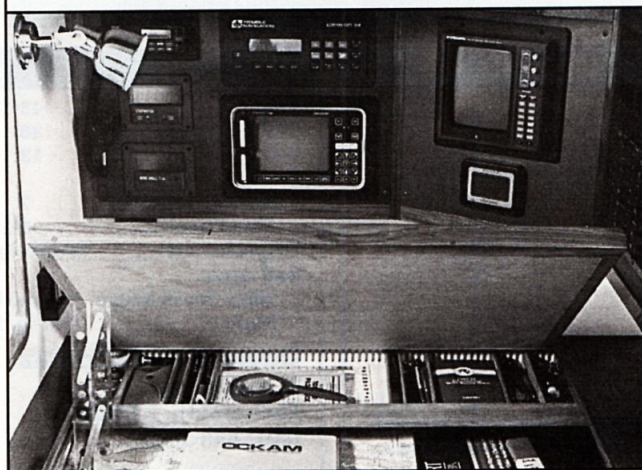
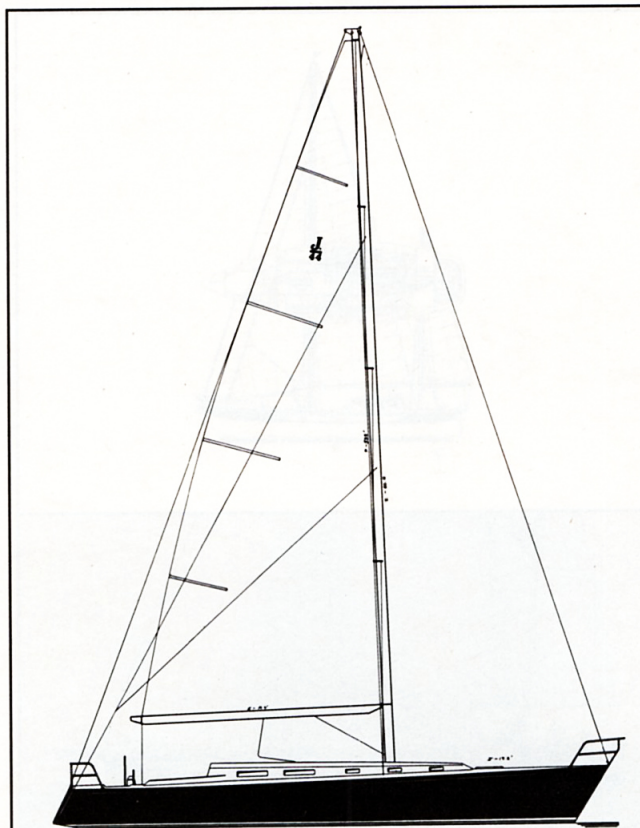
A truly fast, proper yacht without parallel in its size, the J/44 is an exciting offshore one-design racing yacht which combines exceptional performance, seaworthy dual-purpose accommodations (race/cruise), and offshore safety features.

The J/44 has emerged as the premier large offshore one-design class in North America. In fact, with over 30 boats sold and a J/44 One-Design Class Owners Association, class racing is already happening in the New York Y.C. Cruise, the North American Championships in Newport, RI, and the Columbus Cup in Baltimore, MD. Never before has a yacht of this exceptional magnitude achieved so much in its first year.

FAST. In 1989, the J/44 won IMS Class I in the New York YC Annual Regatta, 2nd IMS Class I in the Queen's Cup, and 1st Overall in the Robert's Race in Lake Erie.

The closest analogy to its unprecedented success is the J/35, which has emerged in just six years as the most successful offshore one-design class, IMS design, and PHRF racer over 30 feet in North America. The answer is pure design, speed for length, and disregard for rating rules. Rules change and ruin resale value, water doesn't.

PROPER. The J/44 is a powerful and safe boat. Narrow waterline beam for an easily driven hull and low center of gravity to resist capsize help generate a righting moment in excess of 2,200 lbs., more than

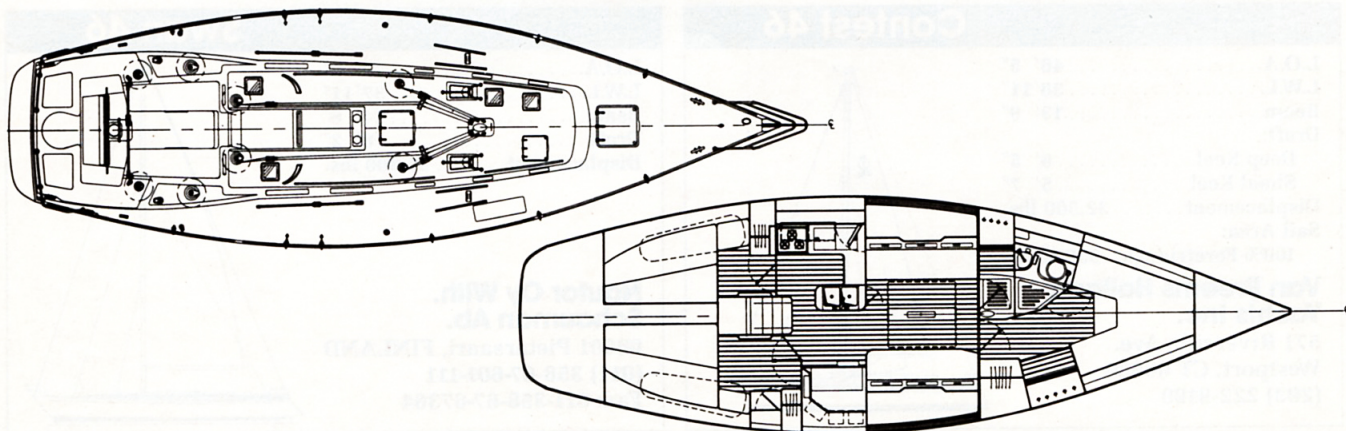


most 50-footers! Combine this with a balanced water plane, reserve buoyancy forward, and a moderate planing canoe body to maximize both rudder control and surfing, and you have a boat which highly resists "tripping" or "spin-out-broaches" in gale force conditions.

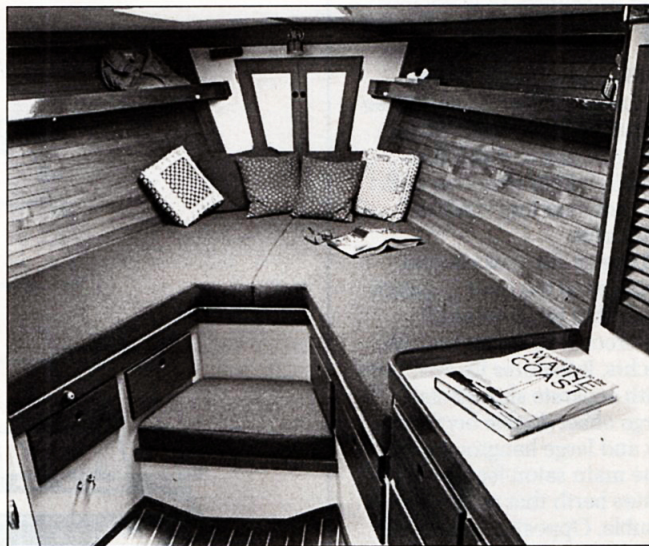
The J/44 is inspected and certified by an A.B.S. on-site technician as exceeding A.B.S. Maltese A-1 Offshore Yacht Standards. Vinyl ester resin and N.P.G. Isophthalic gelcoat in the hull permits a ten-year fully transferable hull/deck warranty against blistering.

YACHT. Going below is more like entering a living room. One's first impression is of space and openness. Classic white formica with hand-laminated and curved teak trim on all surfaces and bulkheads imparts a cheery, contemporary feeling. The standard layout maximizes the number of useful seaberths while not detracting from the storage requirements and sense of space needed for comfortable cruising with 1-3 couples. There's a large navigation station with enough room for radar, Loran-C, SSB, VHF, and stereo sets; dual pilot berths with drawers below; a drop-leaf main cabin table, and an ultra-efficient J-shaped galley with a three-burner/broiler/oven.

The J/44 is quite possibly your ultimate cruising/racing yacht. It can do everything it's been asked to do and better with grace and style.



45'



L.O.A.....	44' 11"	No. of Berths.....	8-10
L.W.L.....	38' 8"	Displacement:	
Beam.....	13' 8"	Deep Keel.....	22,000 lbs.
Draft:		Shoal Keel.....	22,300 lbs.
Deep Keel.....	8' 0"	Sail Area.....	1,040 sq. ft.
Shoal Keel.....	5' 6"	Rig Dimensions	
Ballast:		Foretriangle:	
Deep Keel.....	9,000 lbs.	I (Height).....	60' 0"
Shoal Keel.....	9,500 lbs.	J (Base).....	17' 2"

Main:	
P (Luff).....	54' 0"
E (Foot).....	19' 5"
Water Capacity.....	120 gal.
Fuel Capacity.....	40 gal.
Auxiliary.....	55 H.P. Yanmar
Designer.....	Rodney S. Johnstone
Year Introduced.....	1989

J Boats, Inc.
Box 90, 24 Mill Street
Newport, RI 02840
(401) 846-8410

J
44

For More Information Circle No. 257