



**WITH (OPTIONAL) BRUCE FARR DESIGNED RACING RIG**



**WITH (STANDARD) MAST HEAD RIG**





## LANCER 36

### I.O.R. RACER & OFFSHORE CRUISER

The Lancer 36 is a development of the highly successful Bill Lee-designed one tonner, "Chutzpah," the only boat to have won the Transpacific Yacht Race first overall, twice in a row. Her sister ship, "Witchcraft," placed first overall in both the San Francisco to Santa Barbara Race and the Los Angeles to Mazatlan Yacht Race.

Bill Lee, the country's most successful and foremost designer of ULDB ocean racing yachts (his yacht "Merlin" still holds the Transpac elapsed time record), designed the hull of the Lancer 36 to have low wetted surface with a fine entry and excellent surfing characteristic. The hull is molded in one piece, utilizing the balsa core construction technique, which produces a structure of superior strength with the maximum rigidity for its weight. The standard masthead rig is essentially the same sail plan used to win the Transpacific Yacht Race.

Bruce Farr, one of the world's finest IOR Racing Yacht designers, presently acknowledged as the outstanding developer of the non-masthead or fractional, swept spreader bendy rig, for offshore racing, was commissioned by Lancer Yachts to design an optional rig, sail plan, rudder and ballasting for the Lancer 36.

The results have produced a high performance, high sail area yacht with a light displacement hull form, generous beam with powerful sections, and a fine bow. The powerful hull coupled with a deep, modern NACA shaped keel with the center of gravity of the ballast only 17" from the bottom of the keel, will be very stiff and ensure excellent performance to windward, especially in rough water. The generous beam, light displacement and high sail area to displacement ratio will guarantee a fast, exhilarating ride downwind and reaching with easy control.

The rig is a development of the non-masthead swept spreader arrangement used successfully on previous Bruce Farr racing and cruising yachts – no complicated runners, easy to handle, smallish headsails and a mainsail large enough to drive the boat by itself in complete control for "nonchalant" cruising. A slightly higher fore-triangle height compared to mainsail luff will give more direct control of forestay sag and will make backstay adjustment less critical.

By combining and blending the talents of two outstanding yacht designers and utilizing a proven hull form along with a sail plan that will produce an extraordinarily high power ratio (sail area to displacement), the Lancer 36 should prove to be an impressive performer.

The standard interior has a straight forward arrangement well proven on many ocean racing yachts of around this size. Features of note are the two large double quarter berths, a full size chart table that measures 3'9" by 2'6", a very large head compartment, and sail storage area forward. The main cabin area has two pilot berths and two settee berths with a large drop-leaf table on the centerline.

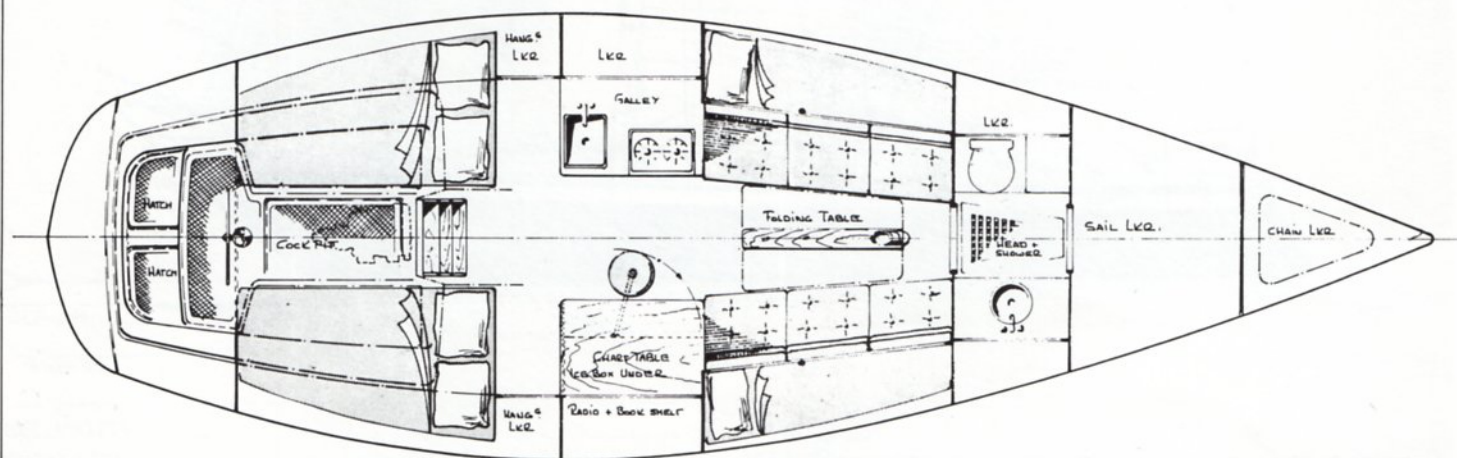
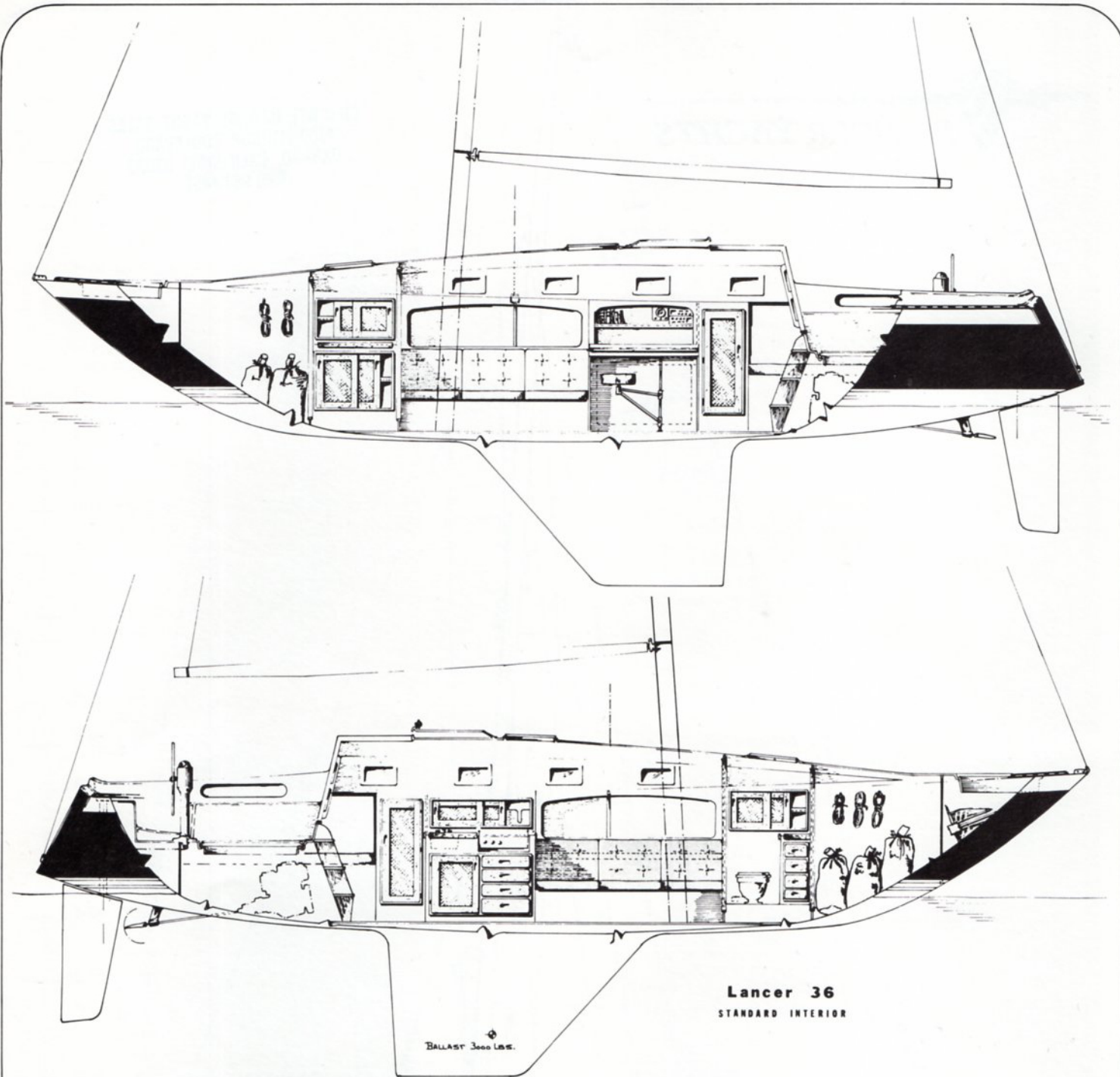
Countless lockers throughout the yacht, along with an 18 cubic foot ice box, should afford adequate provision storage for a large crew for an extended cruise or a long distance ocean race.

The optional cruising interior layout is quite unique in that it has a separate and private owner's stateroom aft, with a 6'9" long double berth and direct access to a large head area with a separate stall shower compartment. The navigation area has a full size (2' x 3') sit-down chart table and a double quarter berth. The galley has approximately 18 square feet of counter space, a 12 cubic foot ice box (refrigeration option), lots of lockers and drawers, a gimballed stove with oven and a double stainless steel sink. The main cabin area is unique, to say the least; it has 17 linear feet of plush upholstered lounge area for entertaining. The lounge can be used for either 2 large single berths, 7'6" long, or can be converted to 2 — 7'6" long double berths. Cane panel locker doors, a solid teak drop-leaf table, two 5' long book case alcoves and fine teak joiner work make for a roomy, inviting social area.

Perhaps the most important advantage of the Lancer 36 is its light weight. This just makes everything easier — for the same power and greater speed, the sails are smaller and thus easier to handle, the winches are smaller and easier to crank, the sheets are lighter, and everything is just simpler and less expensive. The boat is particularly responsive and easy to steer, and the family can comfortably take it out for an afternoon race or an extended cruise, without needing a highly talented racing crew.

All in all, the Lancer 36, with its generous beam and roomy, teak crafted, well thought out interior plans, coupled with sparkling performance capabilities should prove to be a delight to the racing enthusiast and the offshore cruiser alike.







## 1982 LANCER 36

## STANDARD EQUIPMENT

## Standard Interior

## HULL

- Fiberglass, With Hand Laminated Woven Roving - Full Balsa Core Sandwich Construction
- Standard Colors - White Hull - Red, White and Blue Boot Top - Blue Sheer Stripe

## KEEL

- 4000 Lbs. of Internal Ballast Bonded Securely in Place

## RUDDER

- Schedule 80 S/S Rudder Shaft With Integral Steel Backbone - Surrounded With High Density Foam - Fiberglass Covered

## DECK

- One Piece Fiberglass - Plywood & Balsa Core Reinforced
- Molded Non Skid Surfaces
- Large Self-Draining Cockpit
- Sliding "Skylight Type" Main Hatch With Sea-hood
- Locking Forward "Skylight Type" Aluminum Frame Hatch
- Foredeck Self-Draining Anchor Locker

## STANDING &amp; RUNNING RIGGING

## (MASTHEAD RIG)

- Aluminum Mast, Boom & Air Foil Spreaders
- S/S - Chain Plates & Stem Fittings
- S/S 1x19 Wire With Swedged Fittings (Standing)
- Internal Upper and Lower Shroud Tangs (Gib Hooks)
- Internal Main and Jib Halyards Pre Stretched Dacron With Spliced-On Fittings

- Special Stainless Steel Mast Step Fitting With Provision for up to 14 Turning Blocks and/or Halyard Attachments
- Ball Bearing Main Sheet Traveler With Control Lines
- Main & Jib Sheets - Yacht Braid
- Split Back Stay
- A "Super Boom" With an Internal Outhaul and an Internal Reefing System for Two Sets of Reef Points
- Baked White Polyester Coating on Mast & Boom
- S/S Boom Vang Bails on Boom & Base of Mast

## ELECTRICAL

- 12 Volt Die Hard Marine Battery With Fused Panel
- 14 Interior Lights
- International Navigation Lights
- Engine Room Lights

## TANKAGE

- 40 Gallons Fresh Water Tank

## INTERIOR

- Main Cabin Area - Two Lower Berths, Two Pilot Berths, Plush 5' Color Coordinated Cabin Cushions and Back Rests With Storage Behind
- Navigation Station-Full Size Chart Table With Chart Storage Under, Electronics Shelves
- All Teak Interior
- Beautifully Crafted Cane Panel Cabinet Doors for Superior Ventilation
- Upholstered Headliner
- Fully Enclosed Head Compartment With Drawers and Vanity Sink

- Complete Galley With Deep S/S Sink, Foam Insulated Ice Box, (Under Navigators Station) Teak Dish Lockers, Drawers, Fresh Water Pump & Stove
- Electric Ice Box Drain Pump
- Solid Teak Drop Leaf Table
- Aromatic Cedar Lined Drawers in Galley and Head Compartment

## EXTERIOR

- Exterior Wood Trim & Handrails of Oiled Teak
- 2 Bow & 2 Stern Mooring Cleats
- Full Length Anodized Aluminum Toerail
- Inboard Genoa Track with Surfline Wide Sheave Blocks
- Pedestal Wheel Steering System With S/S Wheel, Danforth Corsair Compass & Engine Controls
- Tinted, Translucent Forward & Main Hatch
- Hasp on Main Hatch for Padlock
- Bow Pulpit
- Stern Pulpit
- Lifelines & Stanchions
- Mainsail with Two Sets of Reef Points, Fiberglass Battens, Leach Line, Cunningham & Draft Stripe
- #4 Genoa With Windowed Tell-Tails, Leach Line, Sail Bag & Draft Stripe
- Four Opening Ports With Screens
- 2 Cockpit Storage Lockers With Sliding Covers (Approximately 5 Cubic Feet of Storage Area Each)
- Flush Sliding Transparent Cover over Cockpit Engine Instrument Panel

## DIMENSIONS: Standard Interior With Bruce Farr Racing Package &amp; Lightest Engine

Length Overall	36'2"	Displacement	8,600 Lbs.*
Length Water Line	29'0"*	Ballast	3,000 Lbs.
Beam	11'9"	Fuel Tank	30 Gal.
Draft-Standard Keel	6'2"*	Bridge Clearance	55'0"
Draft-Shoal Draft Keel	4'11"	Designer	Bill Lee/Bruce Farr

\*Above Dimensions Are Approximate As They are Affected by Loading Conditions

## 1982 LANCER 36

## STANDARD EQUIPMENT

## Cruising Interior

## HULL

- Fiberglass, With Hand Laminated Woven Roving - Full Balsa Core Sandwich Construction
- Standard Colors - White Hull - Red, White and Blue Boot Top - Blue Sheer Stripe

## KEEL

- 4000 Lbs. of Internal Ballast Bonded Securely in Place

## RUDDER

- Schedule 80 S/S Rudder Shaft With Steel Backbone - Surrounded With High Density Foam - Fiberglass Covered

## DECK

- One Piece Fiberglass - Plywood & Balsa Core Reinforced
- Molded Non Skid Surfaces
- Large Self-Draining Cockpit
- Sliding "Skylight Type" Main Hatch With Sea-hood
- Locking Forward "Skylight Type" Aluminum Frame Hatch
- Foredeck Self-Draining Anchor Locker

## STANDING &amp; RUNNING RIGGING

## (MASTHEAD RIG)

- Aluminum Mast, Boom & Air Foil Spreaders
- S/S - Chain Plates & Stem Fittings
- S/S 1x19 Wire With Swedged Fittings (Standing)
- Internal Upper and Lower Shroud Tangs (Gib Hooks)
- Internal Main and Jib Halyards Pre Stretched Dacron With Spliced-On Fittings
- Special Stainless Steel Mast Step Fitting With Provision for up to 14 Turning Blocks and/or Halyard Attachments

- Ball Bearing Main Sheet Traveler With Control Lines
- Main & Jib Sheets - Yacht Braid
- Split Back Stay
- A "Super Boom" With an Internal Outhaul and an Internal Reefing System for Two Sets of Reef Points
- Baked White Polyester Coating on Mast & Boom
- S/S Boom Vang Bails on Boom & Base of Mast

## ELECTRICAL

- 12 Volt Die Hard Marine Battery With Fused Panel
- 14 Interior Lights
- International Navigation Lights
- Engine Room Lights

## TANKAGE

- 40 Gallon Fresh Water Tank

## INTERIOR

- Forward Cabin Area - Five Cane Door Lockers, Two Book Cases, Two Berths (That Convert to Doubles), Hanging Locker, Bureau With Drawers, and Sail Storage Locker, Plush 5' Color Coordinated Cabin Cushions, Upholstered Back Rests With Storage Lockers Behind
- Separate Owner's Cabin With Drawers, Hanging Locker, and Double Berth
- Navigation Station-Full Size Chart Table With Chart Storage Under, & Double Quarter Berth
- All Teak Interior
- Beautifully Crafted Cane Panel Cabinet Doors for Superior Ventilation
- Teak Companionway Interior Handrails
- Upholstered Headliner
- Fully Enclosed Head Compartment With Teak Door, Vanity Sink, & Sliding Locker

- Complete Galley With Deep Double S/S Sink, Foam Insulated Ice Box, Teak Dish Lockers, Drawers, Fresh Water Pump & Gimballed Stove With Oven
- Electric Ice Box Drain Pump
- Teak Ceilings (Hull Covering) Forward Cabin, Owner's Cabin & Navigator's Quarter Berth
- Solid Teak Drop Leaf Table
- Mirror In Head Compartment
- Aromatic Cedar Lined Drawers in Galley, Forward & Owner's Cabins

## EXTERIOR

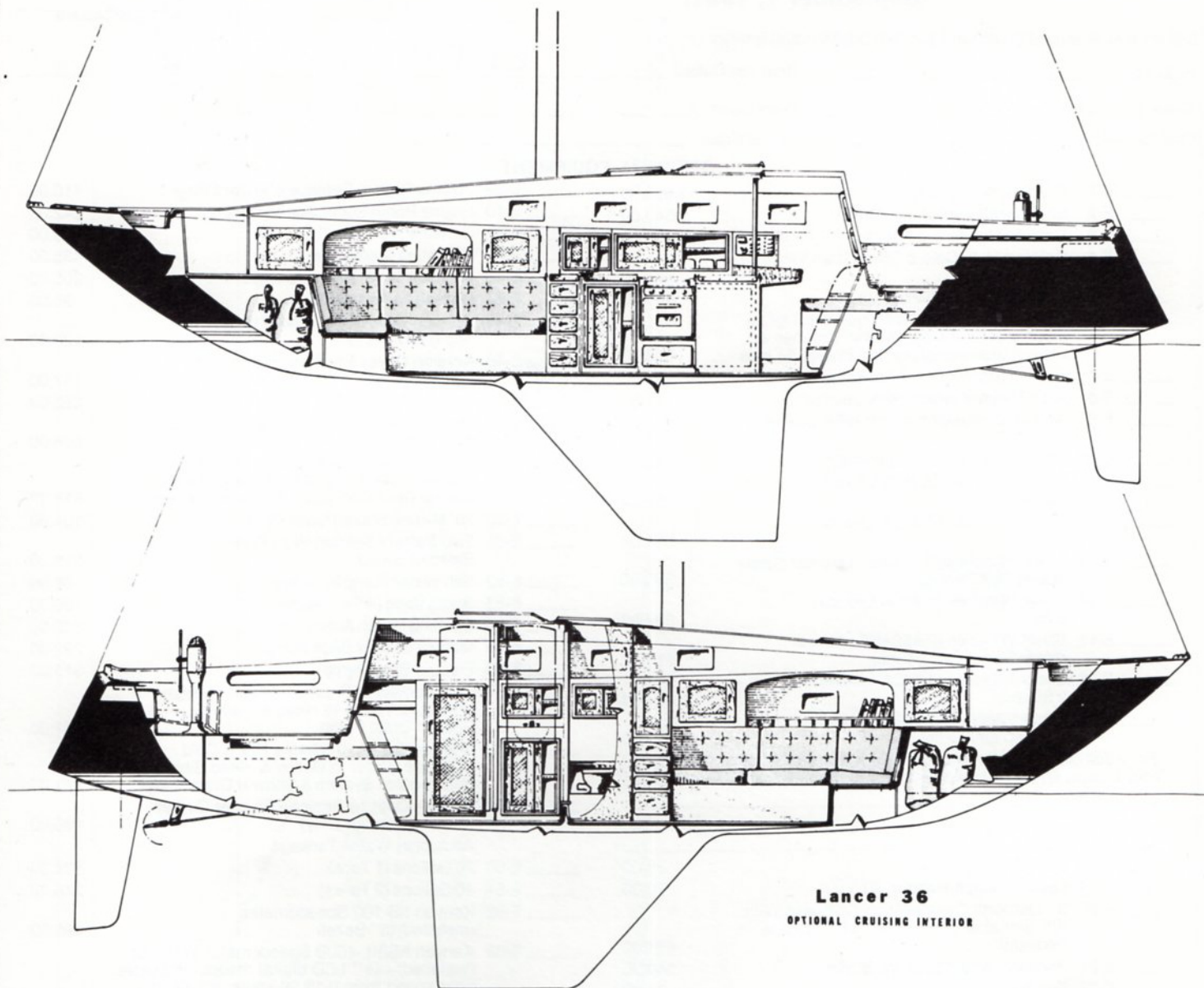
- Exterior Wood Trim & Handrails of Oiled Teak
- 2 Bow & 2 Stern Mooring Cleats
- Full Length Anodized Aluminum Toerail
- Inboard Genoa Track With Surfline Wide Sheave Blocks
- Pedestal Wheel Steering System with S/S Wheel, Danforth Corsair Compass, & Engine Controls
- Tinted Translucent Forward & Main Hatch
- Hasp on Main Hatch for Padlock
- Bow Pulpit
- Stern Pulpit
- Lifelines & Stanchions
- Mainsail With Two Sets of Reef Points, Fiberglass Battens, Leach Line, Cunningham & Draft Stripe
- #4 Genoa With Windowed Tell-Tails, Leach Line, Sail Bag & Draft Stripe
- Four Opening Ports With Screens, Owner's Cabin, Navigation, Head & Galley Areas
- 2 - Cockpit Storage Lockers With Sliding Covers (Approximately 5 Cubic Ft. of Storage Area Each)
- Flush Sliding Transparent Cover Over Cockpit Engine Instrument Panel

## DIMENSIONS: Cruising Interior With Standard Masthead Rig

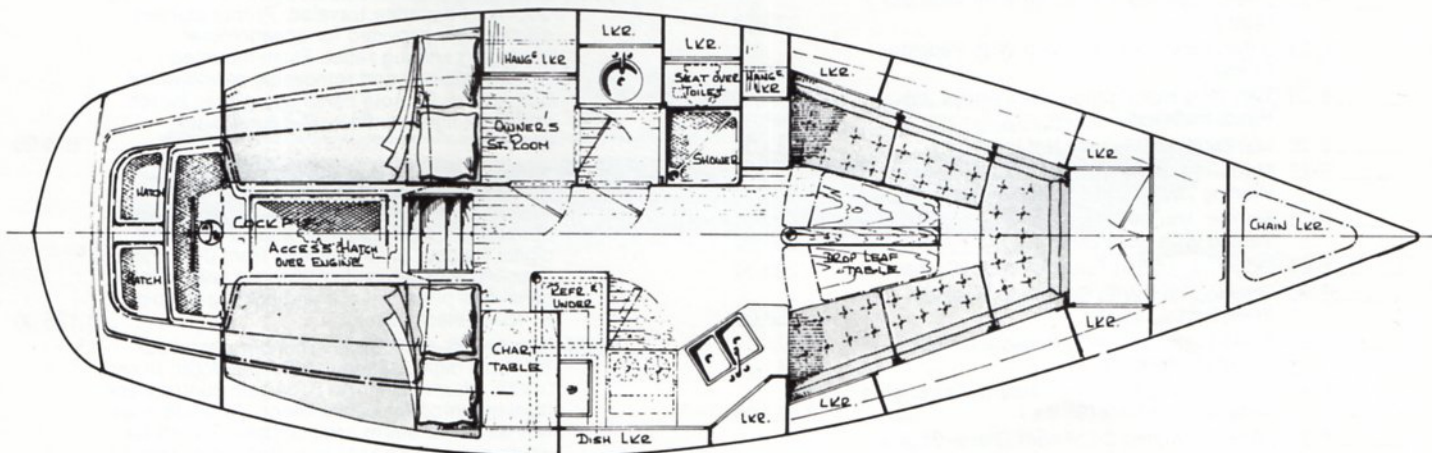
Length Overall	36'2"	Displacement	10,500 Lbs.*
Length Water Line	29'0"*	Ballast	4,000 Lbs.
Beam	11'9"	Fuel Tank	30 Gal.
Draft-Standard Keel	6'2"*	Bridge Clearance	47'0"
Draft-Shoal Draft Keel	4'11"	Designer	Bill Lee/Bruce Farr

\*Above Dimensions Are Approximate As They Are Affected By Loading Conditions





**Lancer 36**  
OPTIONAL CRUISING INTERIOR



**LANCER 36 — CRUISING INTERIOR LAYOUT**



# 1981 LANCER 36 PRICE LIST & ORDER FORM

(September 1, 1981)

HULL \_\_\_\_\_

DATE \_\_\_\_\_

L36 With All Standard Equipment \$51,948.00 (Standard Interior Layout)

Hull Color \_\_\_\_\_ Boot Top Colors \_\_\_\_\_  
 \_\_\_\_\_ Top \_\_\_\_\_ Middle \_\_\_\_\_ Lower \_\_\_\_\_  
 Sheer Stripe Color \_\_\_\_\_ Deck Color \_\_\_\_\_ Non Skid Color \_\_\_\_\_  
 Cushion Color \_\_\_\_\_ Carpet Color \_\_\_\_\_

## OPTIONAL EQUIPMENT

_____ E-1	Cruising Interior Lay-Out .....	2,598.00	_____ E-39	Folding Prop to Replace Standard Prop .....	410.00
_____ E-2	Shoal Draft Keel (4'11" Draft) .....	2,540.00	_____ E-40	Engine Room Super Soundproofing .....	242.00
_____ E-3	Colored Non Skid on Deck .....	330.00	_____ E-41	Curtains .....	330.00
_____ E-4	Colored Hull (Colors Other Than White or Camel Brown) .....	558.00	_____ E-42	Carpeting (Complete) .....	435.00
_____ E-5	Bottom Paint (Anti-Fouling) .....	490.00	_____ E-43	Mainsail Cover With L36 Logo .....	205.00
_____ E-6	Double Bow Pulpit (With Running Lights) Double Stern Pulpit, Double Lifelines & Stanchions to Replace Std. Pulpits & Lines .....	558.00	_____ E-44	Pedestal & Wheel Cover .....	95.00
_____ E-7	Jib Halyard Winch (#8 Lewmar) .....	143.00	_____ E-45	Acralon Covers For Teak Cabin Top Handrails (6) .....	128.00
_____ E-8	Main Halyard Winch (#8A Lewmar) .....	143.00	_____ E-46	Acralon Cover For Teak Hatch and Hatch Boards .....	137.00
_____ E-9	Spinnaker Halyard Winch (#8A Lewmar, 2 Speed) .....	143.00	_____ E-47	Cockpit Cushions .....	255.00
_____ E-10	Main Sheet Winch (#8 Lewmar) .....	143.00	_____ E-48	Norcold Refrigeration System - 110 Volt & 12 Volt .....	806.00
_____ E-11	Main Sheet Winch (#16A Lewmar, 2 Speed) .....	256.00	_____ E-49	110 Volt Electrical System - Includes 6 Duplex Outlets, 15 AMP Battery Charger, Marine Deck Connector & Circuit Breaker .....	515.00
_____ E-12	Sheet Winches (2 #16A Lewmar, 2 Speed) .....	512.00	_____ E-50	50' Marine Shore Power Cord .....	104.00
_____ E-13	Sheet Winches (2 #16AST Lewmar Single Speed Self Tailing) .....	590.00	_____ E-51	Two Battery System With Perko Selector Switch .....	218.00
_____ E-14	Sheet Winches (2 #30A Lewmar, 2 Speed) .....	622.00	_____ E-52	Salt Water Pump in Galley .....	160.00
_____ E-15	Sheet Winches (2 #30AST Lewmar Single Speed Self Tailing) .....	710.00	_____ E-53	Boom Vang (4 Part) With Cam Cleat .....	160.00
_____ E-16	Sheet Winches (2 #42A Lewmar, 2 Speed) .....	1,098.00	_____ E-54	Opening Hatch Amidship .....	342.00
_____ E-17	Sheet Winches (2 #42AST Lewmar 2 Speed Self Tailing) .....	1,315.00	_____ E-55	Manual Gusher Bilge Pump .....	292.00
(For Additional Lewmar Winches Available, See Lewmar Catalog at Your Lancer Dealer - Add \$25.00 Each to List Price for Installation)			_____ E-56	Electric Bilge Pump .....	315.00
_____ E-18	Solid Winch Handle, 10" .....	38.00	_____ E-57	Cold Shower & Pressure Water System (Pressure Water to Head & Galley) Shower Drain Pump .....	651.00
_____ E-19	Lock-In Winch Handle, 10" .....	70.00	_____ E-58	Shower System (Includes Hot & Cold Pressure Water in Galley & Head Sinks Std. 110 Volt System & Shower Drain Pump) .....	1,221.00
_____ E-20	5" Danforth Constellation Compass With S/S Binnacle to Replace Std. Compass on Pedestal .....	481.00	_____ E-59	Shower Door to Replace Shower Curtain (Cruising Interior Only) .....	196.00
_____ E-21	Pedestal Wheel Steering Brake .....	160.00		Additional Water Tankage .....	
_____ E-22	Emergency Tiller .....	75.00	_____ E-60	20 Gallons (1 Tank) .....	124.00
_____ E-23	2 Pod Instrument Housing With Pedestal Guard .....	372.00	_____ E-61	40 Gallons (2 Tanks) .....	248.00
_____ E-24	3 Pod Instrument Housing With Pedestal Guard .....	495.00	_____ E-62	Kenyon KS-100 Speedometer (Installed) (5" Bezel) .....	495.00
_____ E-25	Two Thru Hull Fittings With Valves, for Head, Installed .....	145.00	_____ E-63	Kenyon KS/KL-400B Speedometer With Log (Installed) - 1/2" LCD digital readout indicates boat speed from 0-19.99 knots. An electro-mechanical log records and gives a continuous display of distance traveled. Front-mounted controls are provided for speedometer averaging and log reset. Flush-mounted bronze thru-hull and removable paddlewheel transducer. Remote panel has power switch and night light controls. 5" round black bezel .....	675.00
_____ E-26	Marine Head (Manual) Not Installed .....	143.00	_____ E-64	Kenyon AW/WS-400B Apparent Wind System (Installed) Dual Function wind system instrument provides an unbroken 360° display of apparent wind direction and 1/2" LCD digital readout of wind speed from 0-99 knots. Supplied with complete masthead unit. Remote panel has power switch and lighting control. 5" round black bezel .....	1,125.00
_____ E-27	Marine Head (Manual Operated) With Holding Tank Vented With Deck Discharge .....	408.00	_____ E-65	Kenyon DS-400B Depth Sounder (Installed) 3/4" LCD digital readout indicates depth from 0-300'. Alarm set (1'-50') and gain controls are front-mounted for convenience. An audible as well as visual alarm are standard. Switch for either depth from keel or surface is at remote panel, which also has power switch and light controls. 5" round black bezel .....	745.00
_____ E-28	Electric Marine Head With Holding Tank Vented With Deck Discharge .....	604.00	For Additional Kenyon Instruments Available See Kenyon Catalog at Your Lancer Dealer (Add \$130.00 Each to List Price for Installation)		
_____ E-29	Offshore Holding Tank Pump-Out System .....	238.00			
_____ E-30	Opening Port With Screen to Replace Fixed Port ... Each .....	58.00			
_____ E-31	Fixed Ports in Hull (2) Bookcase Area Cruising Interior Only .....	141.00			
_____ E-32	15 H.P. OMC Saildrive Inboard Gas Engine Installed Complete (95 lbs.) .....	3,652.00			
_____ E-33	15 H.P. Yanmar 2 Cylinder Diesel Engine (220 lbs.) .....	6,048.00			
_____ E-34	22 H.P. Yanmar 3 Cylinder Diesel Engine (287 lbs.) .....	6,356.00			
_____ E-35	30 H.P. Yanmar 3 Cylinder Diesel Engine (348 lbs.) .....	6,746.00			
Fresh Water Cooling Kit Installed For Yanmar Diesels					
_____ E-36	15 H.P. .....	432.00			
_____ E-37	22 H.P. .....	445.00			
_____ E-38	33 H.P. .....	469.00	_____ E-66	Raytheon - Ray-53, 25 watt VHF-FM Marine Radio Telephone - Solid State Circuitry, Fully	



Synthesized; All U.S. VHF/FM Marine Channels  
- 54 Channel Transmit and 61 Receive - LED  
Readout Shows Operating Channel - Four  
Weather Channels for Continuous Area  
Forecasts. Installed Complete With Mast  
Head Antenna (2 year warranty) . . . . . 807.00

\_\_\_\_\_ E-67 VHF Masthead Antenna With Coaxial  
Cable Wired to Navigator's Station . . . . . 242.00

\_\_\_\_\_ E-68 Windex Masthead Wind Indicator . . . . . 57.00

\_\_\_\_\_ E-69 Stereo System - AM & FM - Four Speakers &  
Tape Deck \_\_\_\_\_ 8 Track \_\_\_\_\_ Cassette . . . . . 566.00

\_\_\_\_\_ E-70 Backstay Adjuster Kit for Split Backstay -  
Includes 2 Wire Sheave Blocks, S/S Tri-  
angular Ring & 4 Part Tackle With Cam  
Cleat & Snap Shackles . . . . . 242.00

P.V.C. Cowl Ventilators With Dorade Box Includes  
S/S Screen and Closing Mechanism (Installed) Each

\_\_\_\_\_ E-71 3" . . . . . 118.00

\_\_\_\_\_ E-72 4" . . . . . 143.00

\_\_\_\_\_ E-73 5" . . . . . 224.00

\_\_\_\_\_ E-74 Transom Safety Boarding Step with  
Split Stern Rail . . . . . 404.00

\_\_\_\_\_ E-75 Flip Down S/S Boarding Ladder With  
Split Stern Rail . . . . . 187.00

\_\_\_\_\_ E-76 Custom Mast Raising Package Includes  
Special Mast Base, Linked Rigging  
& Tackle & Backstay Adjuster Kit . . . . . 919.00

\_\_\_\_\_ E-77 Combo Deck Light & Mast Light . . . . . 122.00

\_\_\_\_\_ E-78 Teak Ceilings (Hull Covering) in Main  
Cabin Pilot Berths & Quarter Berths  
(Standard Interior Only) . . . . . 605.00

\_\_\_\_\_ E-79 Teak & Holley Sole  
(Standard Interior Lay-Out) . . . . . 1,182.00

\_\_\_\_\_ E-80 Teak & Holley Sole  
(Cruising Interior Lay-Out) . . . . . 1,455.00

\_\_\_\_\_ E-81 Swing-Out Navigator's Seat  
(Standard Interior Only) . . . . . 242.00

\_\_\_\_\_ E-82 Teak Door to Replace Std. Curtain in Head  
Compartment (Standard Interior Only) . . . . . 218.00

\_\_\_\_\_ E-83 Gimballed Stove to Replace Std. Non-  
Gimballed Stove (Standard Interior Only) . . . . . 181.00

\_\_\_\_\_ E-84 2 Burner Gimballed Alcohol Stove With  
Oven to Replace Std. Stove, Eliminates 2  
Drawers (Std. Interior Only) . . . . . 460.00

\_\_\_\_\_ E-85 Propane Gimballed Stove With Oven to  
Replace Alcohol Stove With Oven Includes  
Solenoid Shut-Off Valve, 2 Aluminum Gas  
Bottles (1.5 Gal. Each) Located in Vented  
Fiberglass Deck Lockers . . . . . 558.00

\_\_\_\_\_ E-86 Custom Bruce Farr Designed Racing Package  
- Includes all of the Following: Special Farr  
Designed Sail Plan, Rig, Rudder, Deck Lay-  
Out, Keel Ballasting (3,000 lbs.) & Special  
Keel Fairing, Custom Non-Masthead Racing  
Mast, Tapered With Swept Spreaders • Pro-  
visions for an Internal Pole Lift & Halyards  
(Main - 2 Genoa & Spinnaker) • Special Boom  
With Internal Flattening Reef & Outhaul Plus  
Three Additional Internal Reefs • Special  
Backstay Tackle for Mast Bending • Boom  
Vang • All Halyards, Pole Lift, Mainsheet,

Vang, & Fore Guy Led Aft to Cockpit With  
Line Stoppers (Note: Standard Equipment -  
Main & #4 Genoa Sail Not Included When  
Ordering Bruce Farr Racing Package) . . . . . 4,943.00

\_\_\_\_\_ E-87 Head Foil-2, Double Grooved Headstay  
System . . . . . 495.00

#### Sails - Masthead Rig

\_\_\_\_\_ E-88 #3 Genoa Sail, 7.25 Oz. . . . . 917.00

\_\_\_\_\_ E-89 #2 Genoa Sail, 7.25 Oz. . . . . 1,132.00

\_\_\_\_\_ E-90 #1 Genoa Sail, 6.0 Oz. (150%) . . . . . 991.00

\_\_\_\_\_ E-91 Reacher Sail, 4.2 Oz. (150%) . . . . . 701.00

\_\_\_\_\_ E-92 Drifter Sail, 75 Oz. . . . . 474.00

\_\_\_\_\_ E-93 Tri-Radial Spinnaker Sail, 75 Oz. . . . . 1,155.00

\_\_\_\_\_ E-94 2 Internal Halyards (Main & Jib) Led Back  
to Cockpit to 2 Double Line Stoppers . . . . . 617.00

\_\_\_\_\_ E-95 4 Internal Halyards Led Back to Cockpit to  
2 Triple Line Stoppers - Main, Jib, Spinnaker,  
Halyard & Pole Lift Lines Included in  
Spinnaker Gear) . . . . . 827.00

\_\_\_\_\_ E-96 Pole Lift & Spinnaker Halyard for Above . . . . . 161.00

\_\_\_\_\_ E-97 Roller Furling System With 150% Genoa  
and Sail Cover to Replace Std. #4 Genoa  
(Masthead Rig) (Includes #16 Self-Tailing  
Furling Winch) . . . . . 1,908.00

\_\_\_\_\_ E-98 Poleless Cruising Spinnaker (Radial Head)  
With Blocks, Sheets and Spinnaker Halyard  
With Cleat, Includes Quick & Easy Setting &  
Dowsing Sleeve (Masthead Rig) . . . . . 1,747.00

#### Sails - Farr Fractional Rig

\_\_\_\_\_ E-99 Mainsail With 3 Rows of Reef Points &  
Flattening Reef, 7.75 Oz. . . . . 1,419.00

\_\_\_\_\_ E-100 #4 Genoa Sail 8.25 Oz. With 1 Row of  
Reef Points . . . . . 721.00

\_\_\_\_\_ E-101 #3 Genoa Sail With 1 Row of Reef Points,  
7.25 Oz. . . . . 999.00

\_\_\_\_\_ E-102 #2 Genoa Sail With 1 Row of Reef Points,  
7.25 Oz. . . . . 1,139.00

\_\_\_\_\_ E-103 #1 Heavy Genoa Sail 6.5 Oz. (150%) . . . . . 1,115.00

\_\_\_\_\_ E-104 #1 Light Genoa Sail, 3.8 Oz. (150%) . . . . . 805.00

\_\_\_\_\_ E-105 Reacher Sail, 4.1 Oz. (150%) . . . . . 848.00

\_\_\_\_\_ E-106 Blooper Sail, 75 Oz. . . . . 700.00

\_\_\_\_\_ E-107 Radial Head Spinnaker, 5 Oz. . . . . 997.00

\_\_\_\_\_ E-108 Tri-Radial Spinnaker, 75 Oz. . . . . 1,022.00

\_\_\_\_\_ E-109 Tri-Radial Spinnaker, 1.5 Oz. . . . . 892.00

\_\_\_\_\_ E-110 Spinnaker Gear Includes: Internal Spinnaker  
Halyard With Mast Cleat - Internal Pole Lift  
With Mast Cleat - Spinnaker Pole With Deck  
Shocks - Mast Track and Car - Schaefer Rotary  
Mid-Stay Release Lever - Fore Guy and Cleat -  
After Guy and Cleat - Sheet and Cleat - 2 -  
Rubber Shell Snatch Blocks . . . . . 1,479.00

\_\_\_\_\_ E-111 Reaching Strut With Deck Chocks . . . . . 205.00

\_\_\_\_\_ E-112 Wisker Pole (Forespar Telescoping  
Type 12' to 22') With Deck Chocks and  
Mast Pad Eye . . . . . 342.00

\_\_\_\_\_ E-113 Shipping Cradle - Returnable  
(Made of Steel) . . . . . 774.00

\_\_\_\_\_ E-114 Safety Package Includes - 6 Life Jackets,  
2 Fenders, 4 Dacron Dock Lines, 1 Anchor  
With Chain (20') & Line (150'), 2 Fire  
Extinguisher, 1 Throwable Boat Cushion, 1  
Signal Horn, 3 Hand Signal Flares - 1 Bell . . . . . 360.00

\_\_\_\_\_ E-115 Factory Commissioning in Newport Beach  
Includes: Freight From Factory to Water,  
Charges for Launching & Stepping Mast,  
Rigging & Tuning Mast, Bending on Sails,  
Doing an Operational Check on All Equipment,  
Clean-Up & Delivery to Customer in  
Newport Beach . . . . . 1,200.00

DEALER \_\_\_\_\_

(ADDRESS) \_\_\_\_\_ (PHONE) \_\_\_\_\_

SELLING PRICE \_\_\_\_\_ FREIGHT \_\_\_\_\_

TOTAL SELLING PRICE \_\_\_\_\_ DEPOSIT \_\_\_\_\_

BALANCE DUE C.O.D. \_\_\_\_\_

DEALER SIGNATURE \_\_\_\_\_

RETAIL CUSTOMER \_\_\_\_\_

(ADDRESS) \_\_\_\_\_ (PHONE) \_\_\_\_\_

SELLING PRICE \_\_\_\_\_ FREIGHT \_\_\_\_\_

TOTAL SELLING PRICE \_\_\_\_\_ DEPOSIT \_\_\_\_\_

BALANCE DUE C.O.D. \_\_\_\_\_

RETAIL CUSTOMER SIGNATURE \_\_\_\_\_

All prices and specifications are subject to change at any time including after receipt of Customer's order,  
until final delivery to the customer — drawings in this brochure may show optional equipment.