



LANCER 42

The Lancer 42 is a development of the highly successful, Herb David designed, Lancer 44 which won the City of Newport Beach Perpetual Trophy for first in class, in the 1980 Newport to Ensenada, Mexico International Yacht Race, finishing ahead of more than 350 boats, on a boat for boat basis, ranging in sizes up to 90 feet.

This unique hull form offers outstanding performance under sail, when compared to other cruising types. The Lancer 42's long water line length, high sail area to displacement ratio, modern N.A.C.A. shaped keel, and a high stability factor (2225 lbs. of righting moment at 1° angle of heel) contribute greatly to her all around sailing performance. Speeds under power with either single or twin diesel engines, will be in the 8 to 12 M.P.H. range, up to about 40% faster than other cruising yachts.

Sail handling has been simplified to the point where you can handle all halyards, reef lines for both reefs, boom vang, boom topping lift, and main sheet from the cockpit, using custom designed line stoppers and a standard Lewmar #30 self-tailing winch. You'll never again have to leave the safety of the cockpit to reef the mainsail.

The cockpit is quite roomy and includes a pedestal steerer with engine controls, a 5' compass with binnacle and pedestal guard, a teak fold-up cockpit table and an engine access hatch which measures about 3' x 5', affording you walk around space in the engine room.

The interior accommodation plan is also quite unique for a sailing yacht of this size — a very large owner's cabin is located forward. The cabin takes up the full width of the yacht and includes a queen size berth, hanging locker, drawers and is adjacent to a head compartment with a separate shower stall.

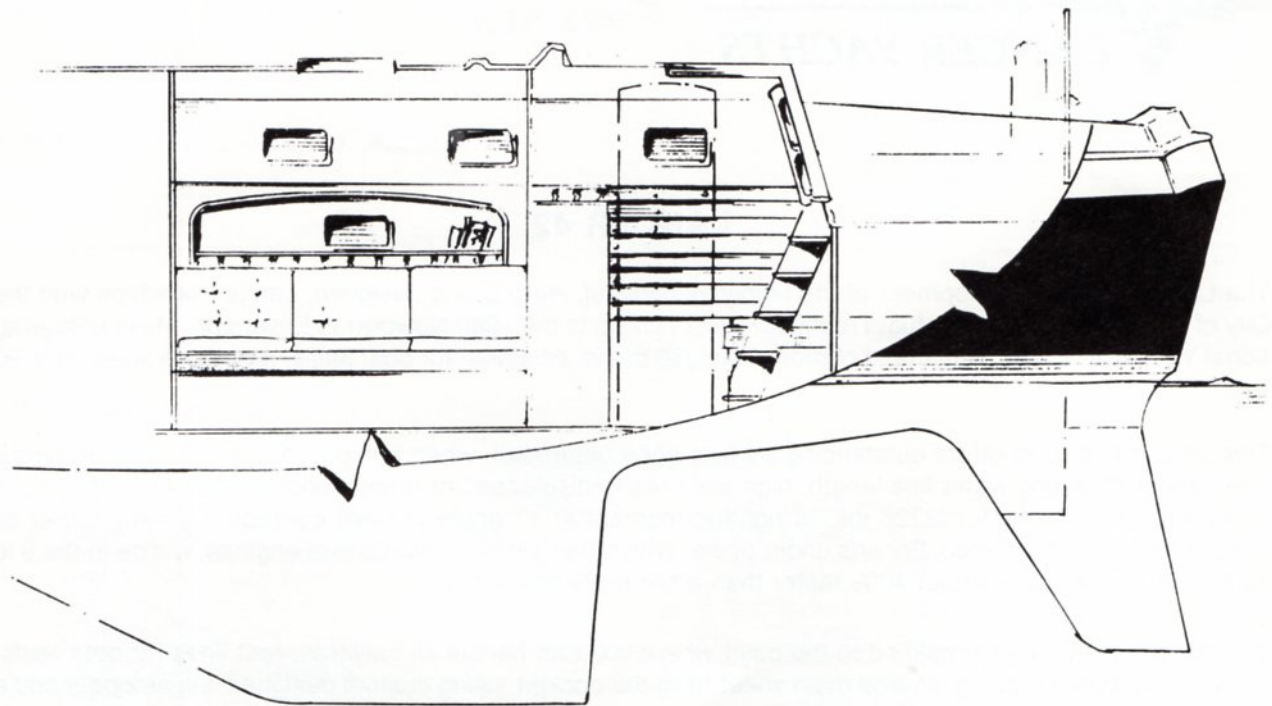
A separate and private guest cabin with a hanging locker and a double berth with drawers under is incorporated into the design.

Another interesting and unique design feature is the separate navigators area which includes a full size sit down chart table with chart stowage under, a 6'8" long quarter berth, electrical panel and an electronic shelf. As an option, this area may be partitioned off with teak bulkheads and a raised paneled teak door to become a private Captain's cabin.

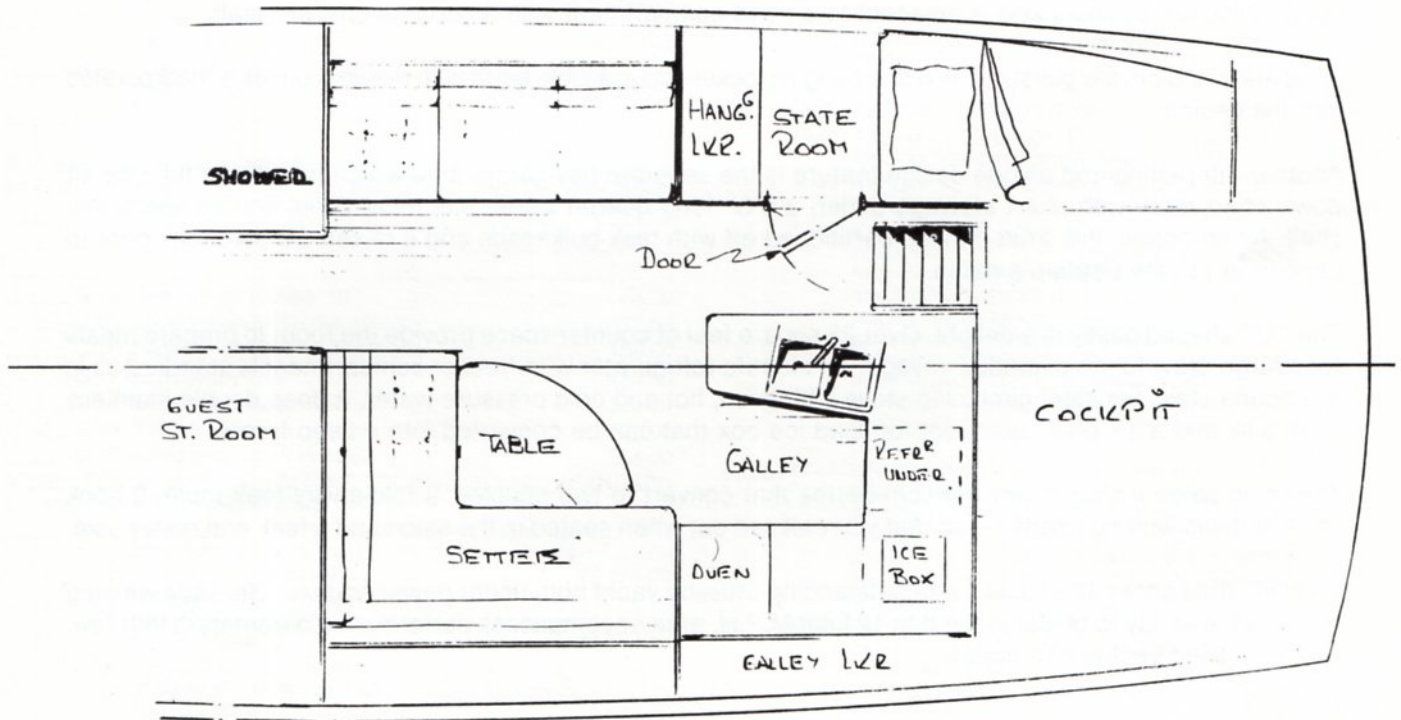
The "U" shaped galley is a delight. Over 25 square feet of counter space provide the room to prepare meals for a large crew for an extended voyage. An electric refrigerator with freezer compartment is standard as is a propane stainless steel gimbaled stove with oven, hot and cold pressure water, a deep double stainless steel sink and a six plus cubic foot top load ice box that can be converted into a deep freeze.

The main salon includes two transom berths that convert to two doubles, a fold-a-way teak table, 2 book case alcoves with hull ports — so that you can see out when seated in the salon and a teak and holley sole.

All in all, the Lancer 42 should be an outstanding cruising yacht both under power and sail. Her race winning hull and the ability to power in the 8 to 12 knot M.P.H. area encompasses performance parameters that few, if any cruising yachts can match.

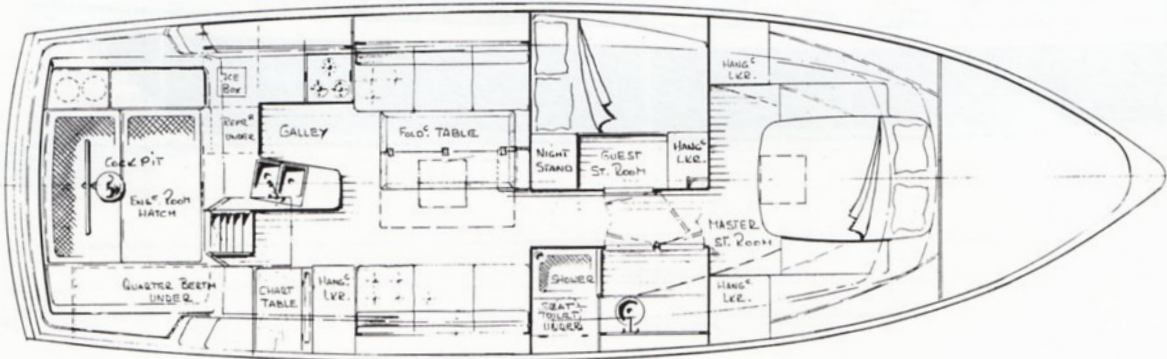
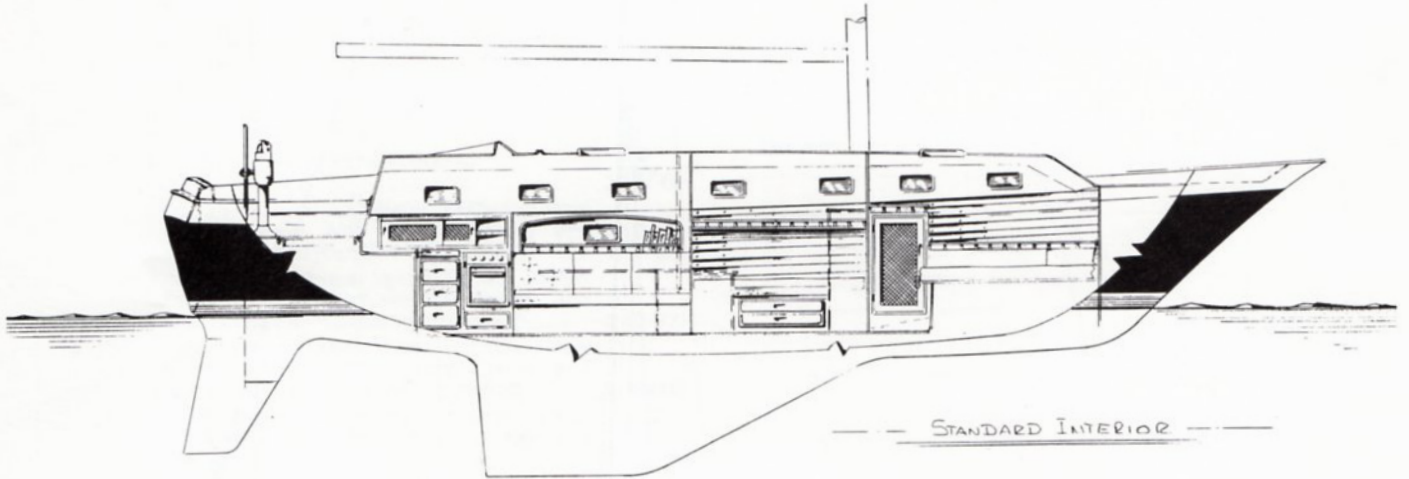
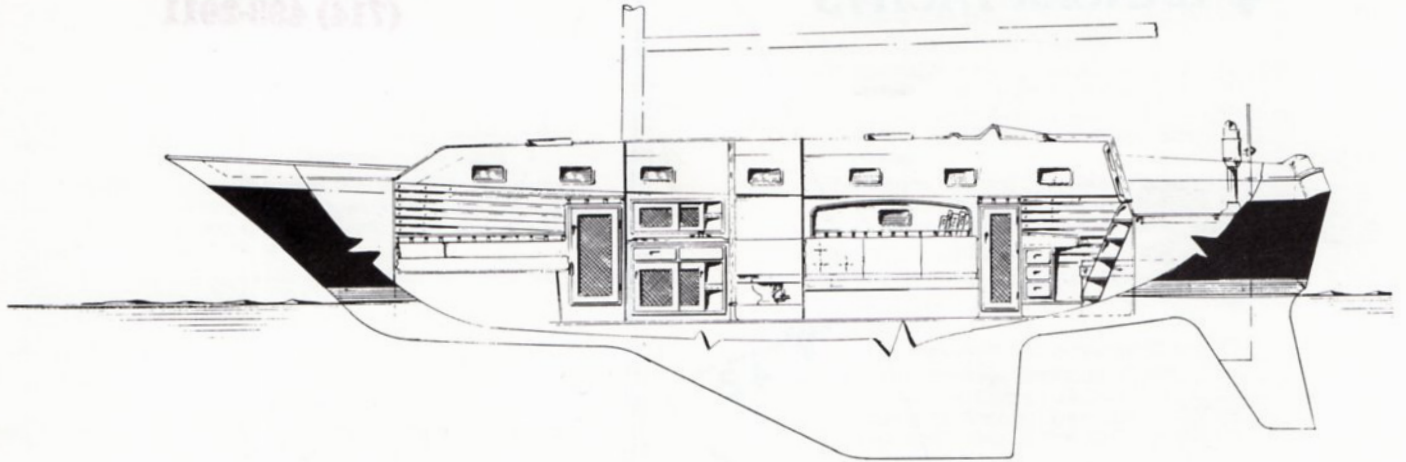


OPTIONAL CAPTAIN'S CABIN



OPTIONAL DINETTE ARRANGEMENT

CRAIG PROBLEY YACHTS
2700 Del Prado
Dana Point, CA 92629
(714) 448-2011





1982 LANCER 42
STANDARD EQUIPMENT
\$132,825.00

HULL

- Fiberglass, with hand laminated Woven Roving - Full Balsa Core Sandwich Construction
- Standard Colors - White Hull - Red, White & Blue Boot Top - Blue Sheer Stripe

KEEL

- 7000 lbs. of Internal Ballast Bonded Securely in Place.

RUDDER

- Schedule 80 S/S Rudder Shaft with Integral Steel Backbone - Surrounded with High Density Foam - Fiberglass Covered.

DECK

- One Piece Fiberglass - Plywood and Balsa Core Reinforced
- Molded Non-Skid Surfaces
- Large Self Draining Cockpit
- Teak Main Companionway Door & Hatch
- Sliding "Skylight Type" Main Hatch with Seahood
- Locking Forward Cabin & Amidships "Skylight Type" Aluminum Frame Hatches
- Bow Roller for Anchor & Mooring Bit
- Foredeck Self Draining Anchor & Storage Locker

STANDING AND RUNNING RIGGING

- Aluminum Mast & Boom with Air Foil Spreaders
- Internal "Gib Hook Type" Tangs for Standing Rigging
- Stainless Steel Chain Plates and Stem Fitting
- S/S 1x19 Wire With Swedged Fittings Standing Rigging
- Prestretched Dacron Running Rigging with Spliced on Fittings
- Internal Main & Jib Halyard
- Ball Bearing Main Sheet Traveler With Control Lines
- Split Back Stay
- Baked White Polyester Coating on Mast & Boom
- A "Super Boom" With an Internal Outhaul and an Internal Reefing System for Two Sets of Reef Points
- S/S Boom Vang Bails on Boom & Base of Mast & Boom Vang Tackle
- All Halyards, Main Sheet, Boom Vang, Reefing Lines for Both Reefs, and Main Boom Topping Lift are Led Aft to a Custom 10 Gang Line Stopper and a Self-Tailing #30 Lewmar Winch With Handle

ELECTRICAL

- 4-12 Volt Marine Batteries With Perko Selector Switch to Isolate Batteries Into Two Banks
- Interior Lighting (12 Volt)
- Electric Marine Head & Holding Tank With an Electric Off Shore Pump Out System
- 110 Volt Electrical System - includes 10 Duplex Outlets, 20 AMP Battery Charger, Marine Deck Connector and Circuit Breaker
- One Electric Bilge Pump with Automatic Feature
- International Navigation Lights
- Engine Room Lights
- Hot and Cold Pressure Water System

TANKAGE (approximate)

- One 104 Gallon Fuel Tank
- One 225 Gallon Water Tank (Below Water Line)

INTERIOR

- Owners Cabin - Queen Size Double Berth, With 5" Cushion, Hanging Locker With Cane Door, Bureau With Cedar Lined Drawers, Teak Ceilings (Hull Covering) Teak and

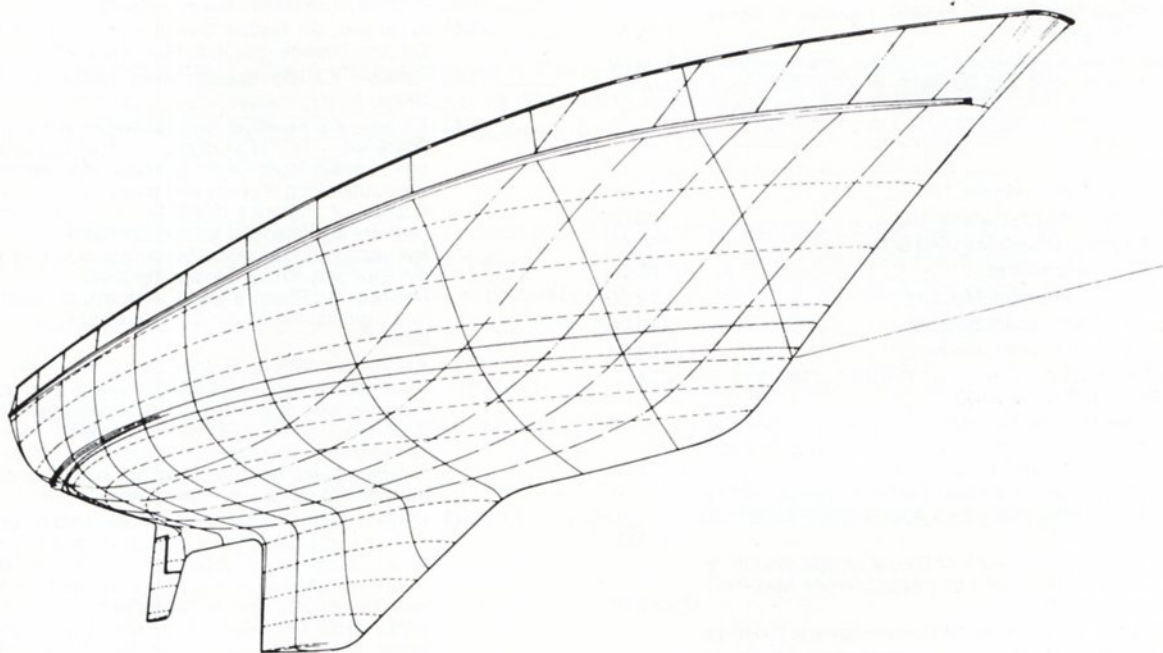
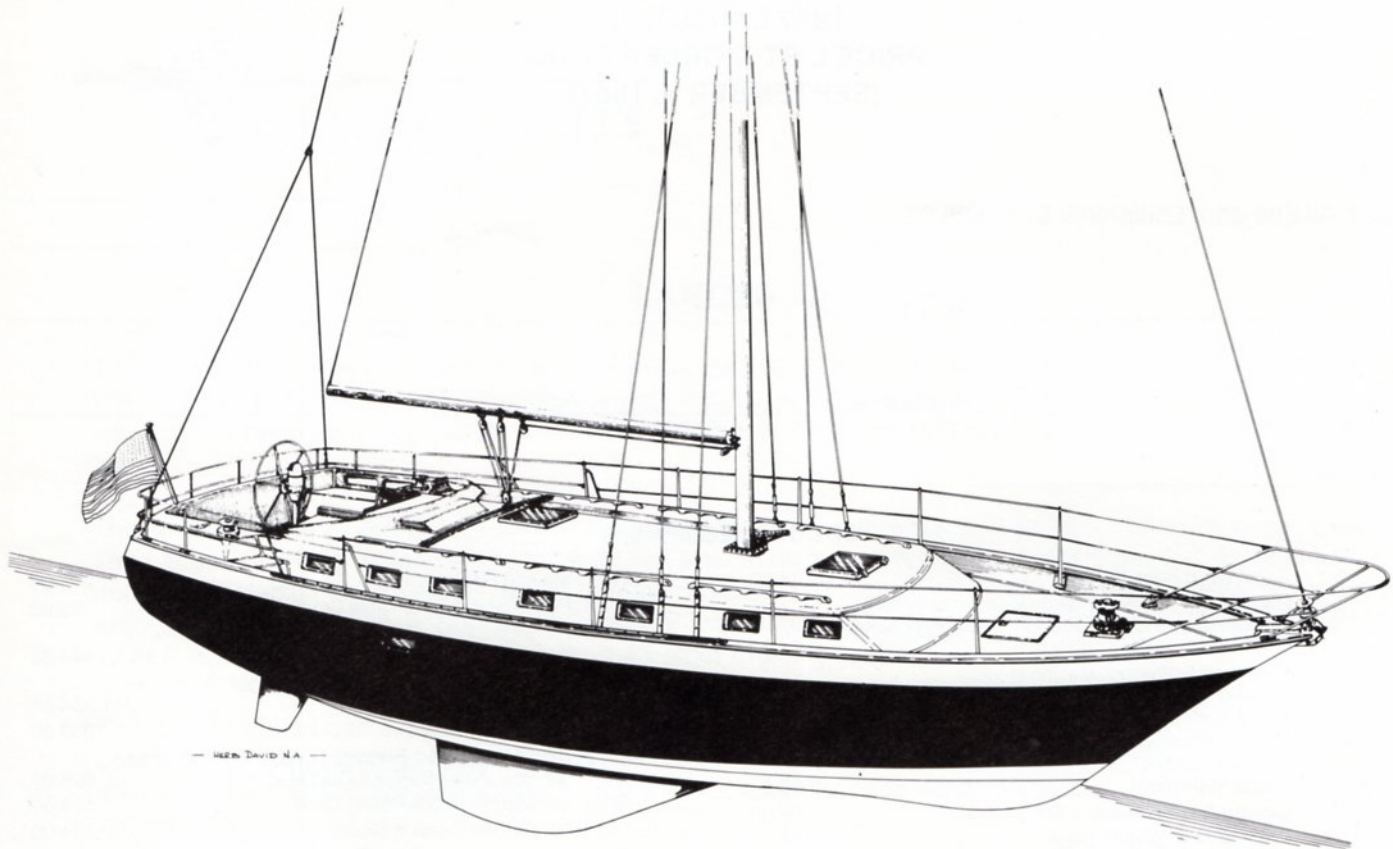
- Holley and Carpeted Sole; 2 Bookcase Alcoves, Four Opening Ports With Screens - "Sky Light" Ventilating Hatch, Full Length Mirror
- Guest Cabin - Double Berth With 5" Cushion, Hanging Locker With Cane Door, Full Length Mirror and Drawers, Two Opening Ports With Screens, Teak and Holley Sole
- Head Compartment - Opening Port With Screen, Vanity With Mirror, S/S Sink and Drawers, Separate Stall Shower Compartment With Hot & Cold Water - Shower Drain Pump and Seat
- Galley - Norcold 110 & 12 Volt Refrigerator With Freezer Compartment, S/S Gimballed Stove With Oven - Propane System with Two Aluminum Tanks and Solenoid Safety Shut Off System, Deep Double S/S Sink - Pressure Hot and Cold Water - Opening Port With Screen - Sliding Storage Lockers, Drawers, Teak & Holley Sole - Top Load 6 Cubic Foot Ice Box With Electric Drain Pump
- Main Salon - Two Berths that Convert into Doubles - Two Bookcase Alcoves with Hull Ports - Hanging Locker - Plush 5" Color Coordinated Cabin Cushions, Upholstered Back Rests with Storage Lockers Behind - Teak & Holley Sole - Hide-A-Way Fold Out Solid Teak Table Measuring About 3' x 5'
- Navigation Area - Full Size Sit Down Chart Table With Chart Storage under - Electrical Panel and Electronics Shelf
- General - All Teak Interior - Beautifully Crafted Cane Panel Cabinet Doors for Superior Ventilation - Upholstered Headliner - Aromatic Cedar Lined Drawers in Galley, Head Compartment, Guest Cabin and Owners Cabin - Teak & Holley Sole Throughout - 16 Opening Ports With Screens

EXTERIOR

- Exterior Wood Trim and Handrails of Oiled Teak
- Two Bow, 2 Stern and 2 Amidships Mooring Cleats
- Full Length Anodized Aluminum Toerail
- Double Bow and Stern Pulpits and Double Life Lines With Gates Port and Starboard
- Flip Down Boarding Ladder in Stern Pulpit
- Inboard Genoa Tracks With Wide Sheave Blocks
- Pedestal Wheel Steering System with S/S Wheel, Danforth 5" Compass with Binnacle, Engine Controls, Pedestal Guard, and a Solid Teak Fold-Up Cockpit Table
- Tinted Translucent Forward-Amidships and Main Companion Way Hatches
- Hasp on Main Hatch for Pad Lock
- Main Sail with Two Sets of Reef Points - Fiberglass Battens - Leach Line, Cunningham - Draft Stripes and Windowed Tell Tails
- 120% Genoa with Windowed Tell Tails, Leach Line, Draft Stripes and Sail Bag
- 2 Cockpit Storage Lockers with Sliding Covers
- 1 Cockpit Seat Hatch
- Flush Sliding Transparent Cover Over Cockpit Engine Instrument Panel

DIMENSIONS

Length Overall	42'-7"
Length Water Line	35'-3"
Beam	13'-9"
Draft-Standard Keel	6'-0"
Draft-Shoal Draft Keel	4'-11"
Displacement	21,000 lbs.
Ballast	7,000 lbs.
Bridge Clearance	60'-0"
Designer	Herb David



_____ G-46 Raytheon - Ray 53, 25 Watt VHF/FM Marine Radio Telephone - Solid State Circuitry, Fully Synthesized - All U.S. VHF/FM Marine Channels - 54 Channel Transmit and 61 Receive - LED Readout Shows Operating Channel - Four Weather Channels for Continuous Area Forecasts. Installed Complete With Mast Head Antenna	807.00	_____ G-73 Roller Furling System With 150% Genoa and Sail Cover to Replace Standard 120% Genoa.....	2,558.00
_____ G-47 VHF Masthead Antenna With Coaxial Cable	242.00	_____ G-74 Roller Furling System With 165% Genoa and Sail Cover to Replace Standard 120% Genoa.....	2,645.00
_____ G-48 Windex Masthead Wind Indicator	57.00	_____ G-75 Tri-Radial Spinnaker Sail (3/4 Oz.).....	2,114.00
_____ G-49 Stereo System - AM/FM - Four Speakers & Tape Deck _____ Cassette _____ 8-Track	566.00	_____ G-76 Spinnaker Gear Includes: Internal Spinnaker Halyard-Internal Pole Lift-Spinnaker Pole With Deck Chocks-Mast Track and Car-Fore Guy-After Guy-Sheet-2 Rubber Shell Snatch Blocks	2,175.00
_____ G-50 Backstay Adjuster Kit for Split Backstay - Includes 2 Wire Sheave Blocks, S/S Triangular Ring and 4 Part Tackle With Cam Cleat & Snap Shackles	446.00	_____ G-77 Poleless Cruising Spinnaker (Radial Head) With 2 Blocks, Sheets & Spinnaker Halyard, Includes Quick and Easy Setting & Dowsing Sleeve.....	2,491.00
P.V.C. Cowl Ventilators With Dorade Box Includes S/S Screen and Closing Mechanism (Installed) Each		_____ G-78 Reaching Strut With Deck Chocks	226.00
_____ G-51 3"	118.00	_____ G-79 Wisker Pole (Forespar Telescoping Type - 12' to 22') With Deck Chocks and Mast Pad Eye	341.00
_____ G-52 4"	143.00	_____ G-80 Shipping Cradle - Returnable (Made of Steel) ..	985.00
_____ G-53 5"	224.00	_____ G-81 Safety Package Includes: 6 Life Jackets, 2 Fenders, 4 Dacron Dock Lines, 1 Danforth Type 40S Anchor, With 20' 3/8" Chain and 150' 7/16" Line, 3 Fire Extinguishers, 3 Hand Held Flares, 1 Bell	610.00
_____ G-54 Teak Swim Platform	1,535.00	_____ G-82 Factory Commissioning in Newport Beach, California Includes: Freight from Factory to Water, Charges for Launching & Stepping Mast, Rigging & Tuning Mast, Bending on Sails, Doing an Operational Check on All Equipment, Clean-Up Sea Trials and Delivery to Customer in Newport Beach, California	1,700.00
_____ G-55 Integral Fiberglass Swim Platform (Extended Hull Like Lancer 44)	767.00	_____	
_____ G-56 Hull Door From Cockpit to Swim Platform	1,179.00	_____	
_____ G-57 Electric - Vertical Anchor Windlass (600 Lbs. Pull) For Handling Line or Chain-Capstan, Wildcat, Clutch, Chain Stripper and Foot Switch Above Deck-Motor and Gearbox Below Deck (Installed).....	2,345.00	_____	
_____ G-58 Electric-Vertical Anchor Windlass (1,000 Lbs. Pull) For Handling Line or Chain-Wildcat, Clutch, Chain Stripper and Foot Switch Above Deck-Motor and Gearbox Below Deck-Includes Chain Run Counter and Can Be Manually Operated	2,950.00	_____	
_____ G-59 Anchor With 250' of 3/8" Chain, Anchor Locks Into Standard Bow Roller	950.00	_____	
_____ G-60 Auto Pilot - Benmar #21-S (Installed Complete)	3,177.00	_____	
_____ G-61 2KW Yanmar, Fresh Water Cooled, Diesel Generator Plant With Remote Starter and Water Lift Muffler (Can Be Hand Started).....	4,632.00	_____	
_____ G-62 3 KW Yanmar, Fresh Water Cooled, Diesel Generator Plant With Remote Starter and Water Lift Muffler (Can be Hand Started)	5,292.00	_____	
_____ G-63 4 KW Yanmar, Fresh Water Cooled, Diesel Generator Plant With Remote Starter and Water Lift Muffler (Can Be Hand Started).....	5,992.00	_____	
_____ G-64 5.5 KW Yanmar, Fresh Water Cooled, Diesel Generator Plant With Remote Starter and Water Lift Muffler (Can Be Hand Started).....	7,127.00	_____	
_____ G-65 Sound Shield for Generator Sets With Durasonic Shroud, Includes Fan, Mounting Platform & Drip Pan	452.00	_____	
_____ G-66 Honeywell Redi-Line Generator (1600 Watts) 15 Amps. (Converts Battery Power to Constant 60 Hz 120 Volt AC) Completely Installed.....	1,454.00	_____	
_____ G-67 Princess, Marine Microwave Oven (Installed).....	693.00	_____	
_____ G-68 Marine Air Conditioning Reverse Cycle (Heating & Cooling) Installed	6,295.00	_____	
_____ G-69 Teak Rubrail With Stainless Steel Striker	1,591.00	_____	
_____ G-70 Seafire Automatic Fire Extinguishing System for Engine Room - Halon 1301 System Produces No Harmful Amounts of By-Products and No Residue	595.00	_____	
_____ G-71 150% Genoa	1,682.00	_____	
_____ G-72 165% Genoa	1,848.00	_____	

DEALER _____

(ADDRESS) _____ (PHONE) _____

SELLING PRICE _____ FREIGHT _____

TOTAL SELLING PRICE _____ DEPOSIT _____

BALANCE DUE C.O.D. _____

DEALER SIGNATURE _____

RETAIL CUSTOMER _____

(ADDRESS) _____ (PHONE) _____

SELLING PRICE _____ FREIGHT _____

TOTAL SELLING PRICE _____ DEPOSIT _____

BALANCE DUE C.O.D. _____

RETAIL CUSTOMER SIGNATURE _____

All prices and specifications are subject to change at any time including after receipt of Customer's order, until final delivery to the customer — drawings in this brochure may show optional equipment — All speeds indicated in this brochure are engineering estimates using favorable conditions and are therefore not guaranteed.

**1982 LANCER 42
PRICE LIST & ORDER FORM
(SEPTEMBER 1, 1981)**

L42 With All Standard Equipment \$132,825.00

Hull Number _____

Date _____

Hull Color _____ Boot Top Colors _____
Top Middle Lower

Sheer Stripe Color _____ Deck Color _____ Non Skid Color _____

Cushion Color _____

OPTIONAL EQUIPMENT

_____ G-1	Shoal Draft Keel 4'-11"	5,428.00
_____ G-2	Captain's Cabin Arrangement (Completely Enclosed, Includes Teak Door, Hanging Locker and 6'8" Long Quarter Berth).....	751.00
_____ G-3	Hide-A-Way Electric Marine Head Captain's Cabin _____ Guest Stateroom	636.00
_____ G-4	Vanity With Stainless Steel Sink Captain's Cabin _____ Guest Stateroom	636.00
_____ G-5	Dinette Arrangement in Main Salon	405.00
_____ G-6	Colored Non Skid on Deck	434.00
_____ G-7	Colored Hull (Colors Other Than White or Camel Brown)	744.00
_____ G-8	Bottom Paint (Anti-Fouling)	558.00
_____ G-9	Teak Cap Rail to Replace Standard Aluminum Toe Rail	1,232.00
_____ G-10	Lewmar #42AST-2 Speed Self-Tailing Winch to Replace Standard #30 Single Speed Self-Tailer, Combination Halyard-Main Sheet & Reefing Winch	328.00
_____ G-11	Sheet Winches (2 #42AST Lewmar 2 Speed Self-Tailing)	1,315.00
_____ G-12	Sheet Winches (2 #48AST Lewmar 2 Speed Self-Tailing)	2,307.00
_____ G-13	Sheet Winches (2 #55AST Lewmar 2 Speed Self-Tailing)	3,279.00

For Additional Lewmar Winches Available, See Lewmar Catalog at your Lancer Dealer. Add \$25.00 Each to List Price for Installation.

_____ G-14	Solid Winch Handle, 10"	38.00
_____ G-15	Lock-In Winch Handle, 10"	70.00
_____ G-16	Pedestal Wheel Steering Brake	160.00
_____ G-17	Emergency Tiller	187.00
_____ G-18	2 Pod Instrument Housing	372.00
_____ G-19	3 Pod Instrument Housing	495.00
_____ G-20	4 Pod Instrument Housing	554.00

NOTE: FEATHERING OR FOLDING PROPELLORS ARE STANDARD ON ALL ENGINE INSTALLATIONS

_____ G-21	Twin Perkins 4-108M Diesel Engines (50 HP @ 4000 RPM Each) (624 Lbs. Each) Approximate Maximum Speed 9 MPH	27,324.00
_____ G-22	Single Perkins 4-154M Diesel Engine (62 HP @ 3000 RPM) (830 Lbs.) Approximate Maximum Speed 8 MPH	14,914.00
_____ G-23	Single Perkins 4-236M Diesel Engine (85 HP @ 2500 RPM) (1026 Lbs.) Approximate Maximum Speed 9 MPH	16,469.00
_____ G-24	Single Perkins 6-354M Diesel Engine (130 HP @ 2800 RPM (1414 Lbs.) Approximate Maximum Speed 11 MPH	20,213.00
_____ G-25	Single Perkins ST6-3544M Turbocharged Diesel Engine (200 HP @ 2400 RPM) (1,580 Lbs.) Approximate Maximum Speed - 12 MPH	23,229.00
_____ G-26	Curtains on All Windows	450.00

_____ G-27	Mainsail Cover	243.00
_____ G-28	Pedestal Wheel & Table Cover	95.00
_____ G-29	Acralon Cover for Main Companionway Hatch	145.00
_____ G-30	Custom Full Width Cockpit Dodger With Side Curtains	1,354.00
_____ G-31	Cockpit Cushions	289.00
_____ G-32	Refrigerator and Freezer System for Top Load Ice Box (Adler Barbour Cold Machine)	806.00
_____ G-33	50' Marine Shore Power Cord	104.00
_____ G-34	Salt Water Pump in Galley	174.00
_____ G-35	Manual Gusher Bilge Pump	286.00

STANDARD WATER AND FUEL TANKAGE

225 Gallons of Water (Tank #2)

104 Gallons of Fuel (Tank #1)

_____ G-36	50 Gallons of Additional Water (Water Tanks #2 and #3)	376.00
_____ G-37	100 Gallons of Additional Water (Water Tanks #2, #3 and #4)	751.00
_____ G-38	121 Gallons of Additional Fuel (Fuel Tank #2 and Water Tanks #1, #3 and #4)	867.00
_____ G-39	Outboard Motor Fuel Tank (For Your Dinghy) 25 Gal. - Built-in - Vented on Deck Fill - Electric Transfer Pump - #5	226.00
_____ G-40	Additional 35 Gallon Water Tank #5	174.00
_____ G-41	Additional 25 Gallon Diesel Fuel Tank (With Electric Transfer Pump to Main Tank) #5	226.00
_____ G-42	Kenyon KS-100 Speedometer (Installed) 5" Bezel	495.00
_____ G-43	Kenyon KS/KL-400B Speedometer With Log (Installed) - 1/2" LCD digital readout indicates boat speed from 0-19.99 knots. An electro-mechanical log records and gives a continuous display of distance traveled. Front-mounted controls are provided for speedometer averaging and log reset. Flush-mounted bronze thru-hull and removable paddlewheel transducer. Remote panel has power switch and night light controls. 5" round black bezel	675.00
_____ G-44	Kenyon AW/WS-400B Wind System (Installed) - Dual function wind system instrument provides an unbroken 360° display of apparent wind direction and 1/2" LCD digital readout of wind speed from 0-99 knots. Supplied with complete masthead unit. Remote panel has power switch and lighting control. 5" round black bezel	1,125.00
_____ G-45	Kenyon DS-400B Depth Sounder (Installed) - 3/4" LCD digital readout indicates depth from 0-300'. Alarm set (1'-50') and gain controls are front-mounted for convenience. An audible as well as visual alarm are standard. Switch for either depth from keel or surface is at remote panel, which also has power switch and light controls. 5" round black bezel	745.00

For Additional Kenyon Instruments Available See Kenyon Catalog at Your Lancer Dealer. Add \$130.00 Each to List Price for Installation.