



1984 LANCER 65

MID COCKPIT OFFSHORE CRUISING YACHT AND HIGH PERFORMANCE MOTORSAILER



1984 LANCER 65
HIGH PERFORMANCE MOTORSAILER WITH OPTIONAL PILOT HOUSE



A Bally COMPANY



HIGH PERFORMANCE MOTORSAILER WITH OPTIONAL FLYING BRIDGE



LANCER 65

MID COCKPIT OFFSHORE CRUISING YACHT AND HIGH PERFORMANCE MOTORSAILER

The Lancer 65 was designed by Herb David. Herb David is an outstanding yacht designer having received his Masters Degree in Naval Architecture and Marine Engineering from the University of Hamburg. Herb David is eminently qualified to perform all the structural and stress calculations needed to assure that the Lancer 65 is a safe and seaworthy yacht capable of sailing the oceans of the world, protecting the owner and his guests and preserving the owner's substantial investment.

Heretofore, motorsailers have been highly comprised designs that have produced boats that neither powered nor sailed very well, performance under power was limited to about 10 M.P.H. and sailing capabilities especially to windward in light air were disappointing.

The Lancer 65 can truly be called a high performance motorsailer. Her unique hull form offers outstanding performance under sail, when compared to other cruising types. The Lancer 65's long water line length, high sail area to displacement ratio, modern N.A.C.A. shaped keel, and a high stability factor (9380 Ft. Lbs. of righting moment at 1° angle of heel) contribute greatly to her all around sailing performance. Speeds under power with either single or twin diesel engines, will be in the 12 to 16 M.P.H. range, up to about 40% faster than other cruising yachts in this size range.

The Lancer 65 is available with a variety of single or twin diesel engine options designed to give just the right combination of range, speed, maneuverability and economy to meet an owner's special requirements. Very few, if any, yachts in this size range offer such a wide scope of performance capabilities.

Sail handling has been simplified to the point where you can handle all halyards, reef lines for both reefs, boom vang, boom topping lift, and main sheet from the cockpit, using custom designed line stoppers and a standard Barient #28 self-tailing winch. You'll never again have to leave the safety of the cockpit to reef the mainsail.

The cockpit is quite roomy (measuring about 10' X 10') and includes a wheel steering console with engine controls and a 5" compass with binnacle.

The interior accommodation plan is also quite unique for a sailing yacht of this size — a very large owner's cabin is located aft. The cabin takes up the full width of the yacht and includes a king size canopy berth, a walk in cedar lined closet, a dressing table with stage lighting and is adjacent to a private head compartment which has a tub/stall shower with an optional sauna and steam generator.

Two guest cabins are incorporated into the design. Both have large double berths, hanging lockers, cedar lined drawers and opening ports with screens. One or two additional double guest cabins may be ordered as an option.

The galley is a delight, 2 side by side double door refrigerator/freezers are standard as is a stainless steel stove with oven, double sinks, hot and cold pressure water system, numerous lockers and drawers and an adjacent dinette capable of seating 8 persons.

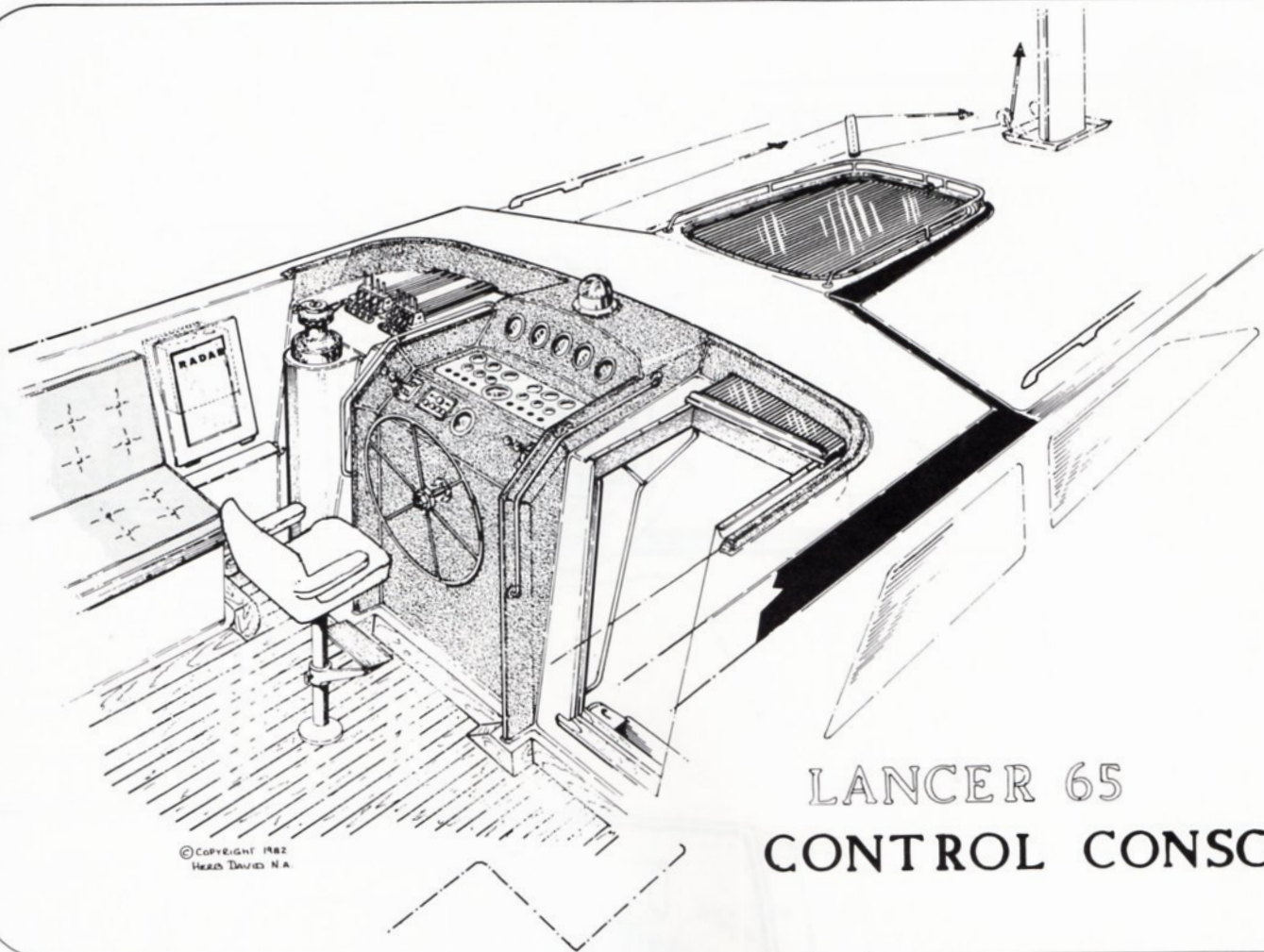
The crew's quarters have a separate entrance from the foredeck. There are two single berths with storage under, a vanity with sink and mirror, and a separate shower stall with marine head.

The main salon is quite large measuring about 11' X 18' including the navigator's station. The owner has the flexibility to furnish this area to his own requirements using a sofa-bed, upholstered chairs, lamps, tables, etc. The engine room is sound shielded using a special laminated acoustical foam-lead-foam material. A sound blanket is used as a padding underneath the standard main salon carpeting.

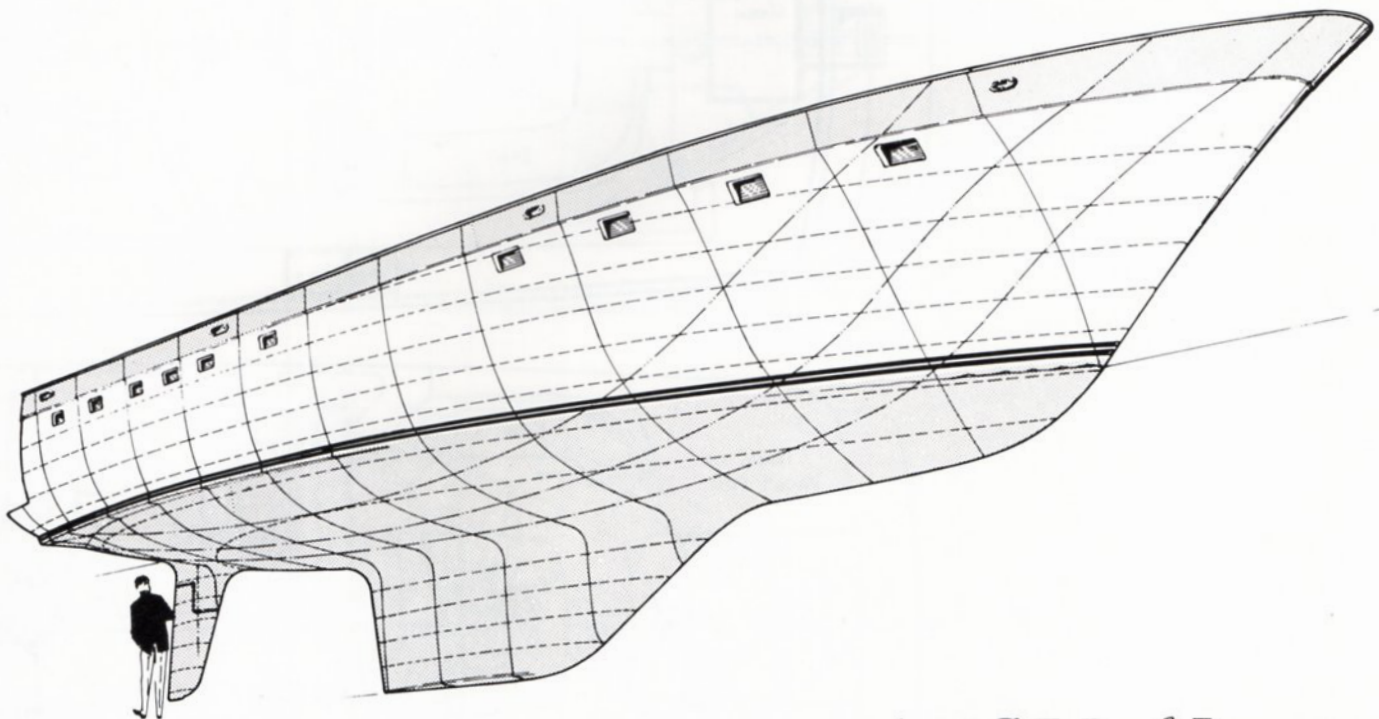
The Lancer 65 can be equipped with a pilot house to give all weather comfort. All sail handling (furling, reefing and tacking) can be handled with one self-tailing electric winch from inside the pilot house. You must go on deck, however, to cast off the dock lines but we're working on that! Also, a flying bridge can be installed providing a substantial increase in the deck and lounging area and an outside steering station with unparalleled visibility.

All in all, the Lancer 65 should be an outstanding cruising yacht both under power and sail. With its beautiful, well thought out interior arrangement that rivals many power boats, its superior performance under sail and the ability to power in the 12 to 16 M.P.H. area, the Lancer 65 should delight many an offshore sailor.

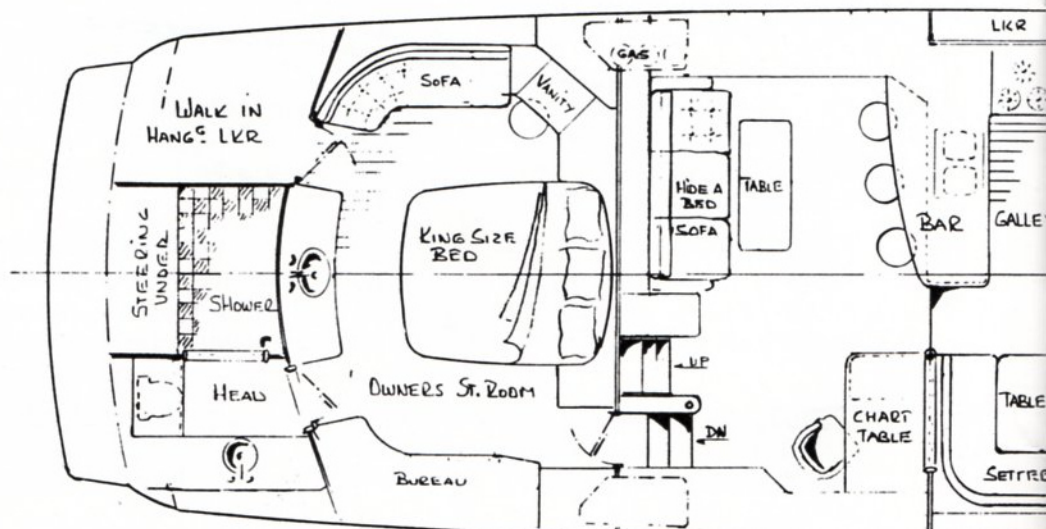
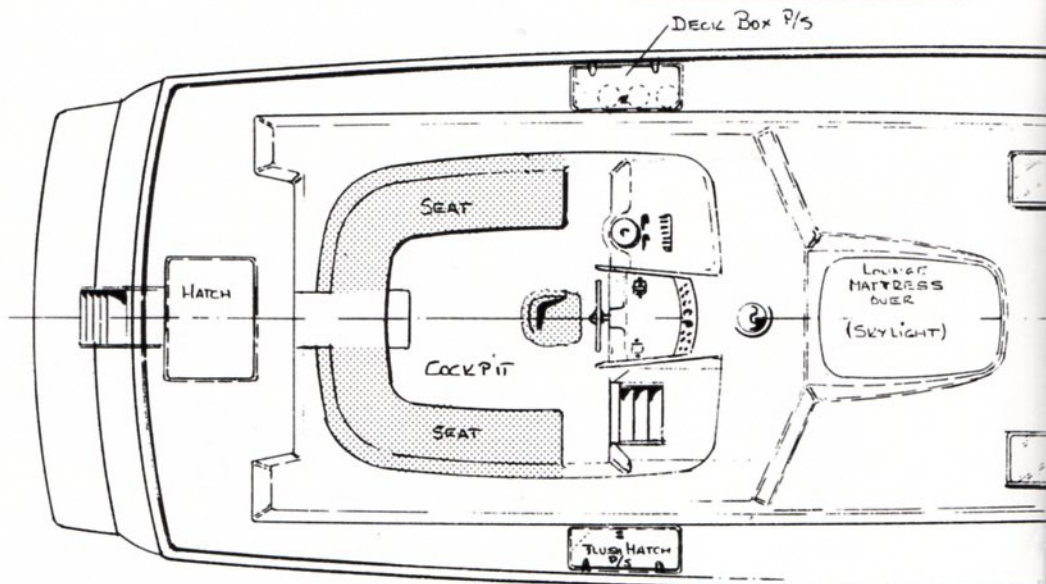
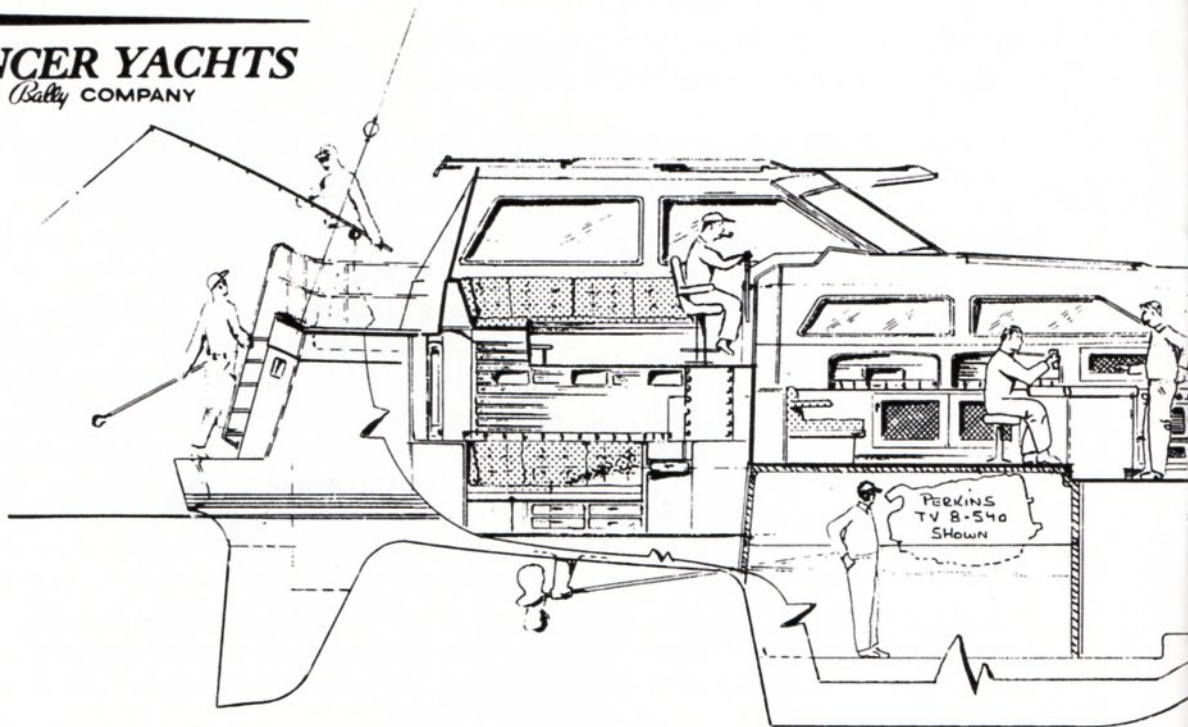
LANCER YACHTS • 1939 DEERE AVENUE • IRVINE, CALIFORNIA 92714
(714) 751-7220 • 1-800-492-2487 • (CALIF.) 1-800-252-6237

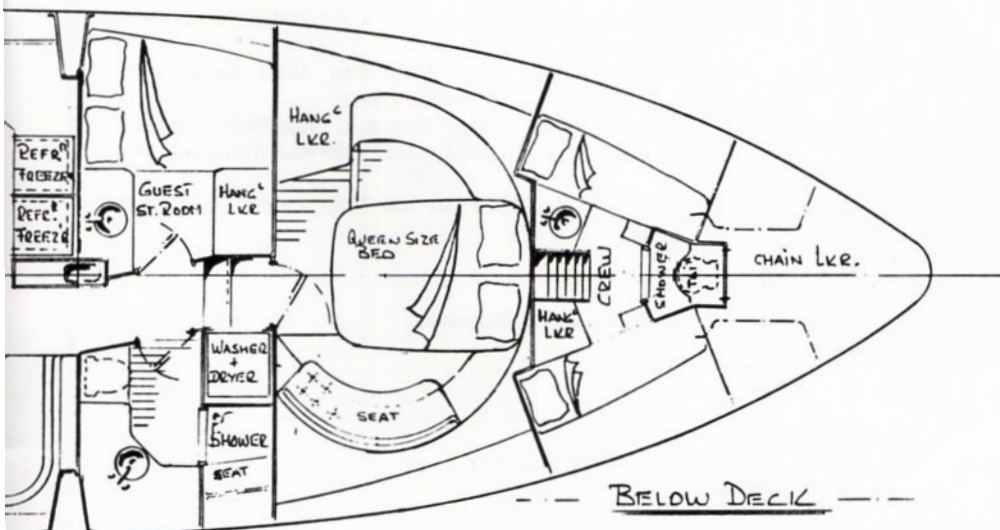
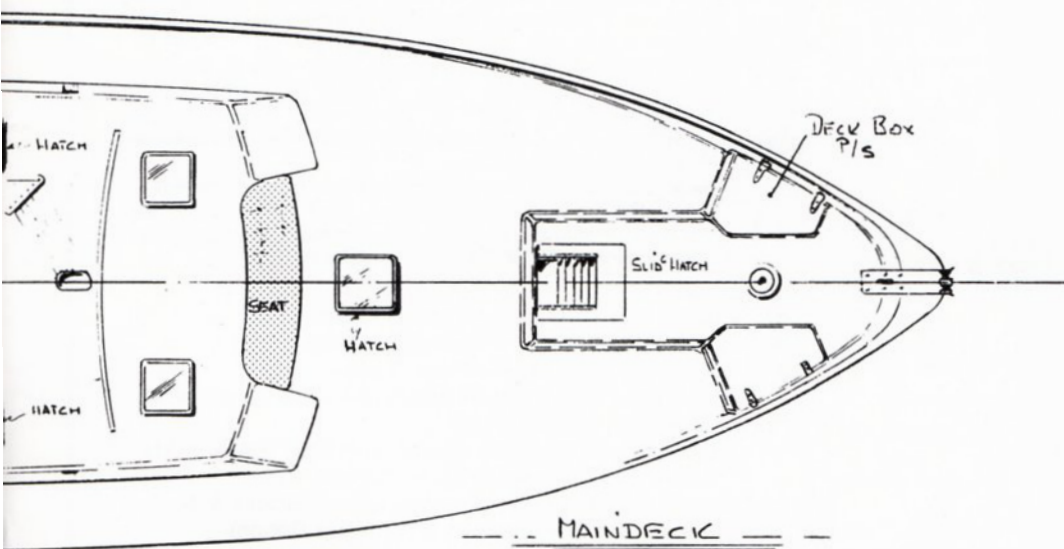
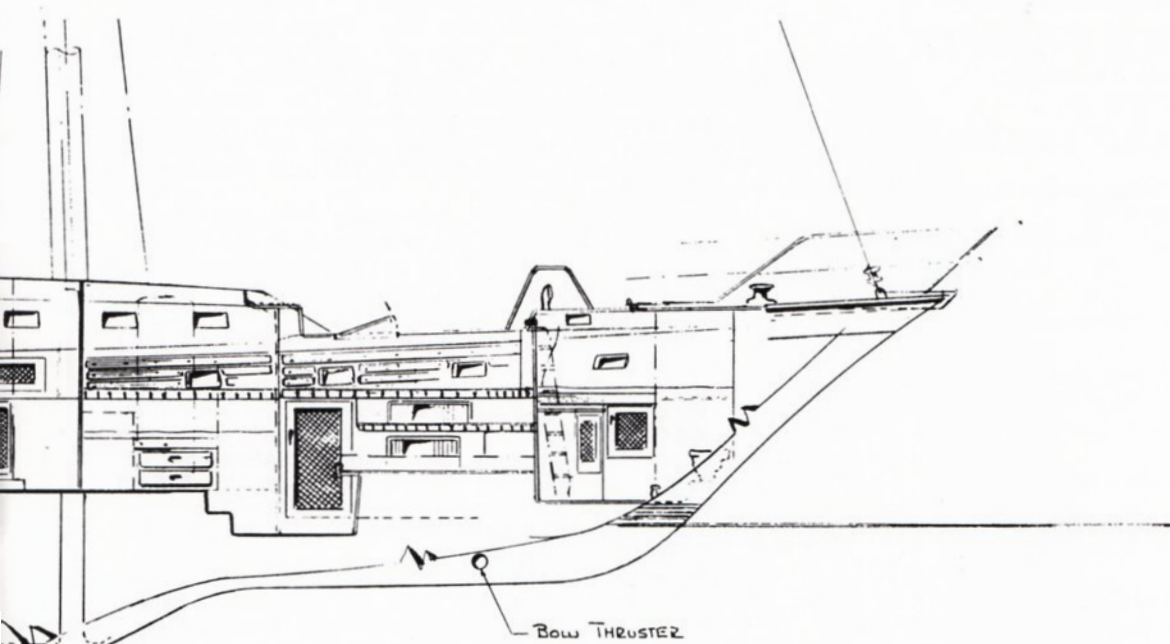


LANCER 65
CONTROL CONSOLE



— LANCER 65 —





**1984 LANCER 65****STANDARD EQUIPMENT \$395,000.00****HULL**

- Fiberglass, with Hand Laminated Woven Roving — Full Balsa Core Sandwich Construction
- Standard Colors — White Hull — Red, White & Blue Boot Top — Blue Sheer Stripe

KEEL

- 14,000 lbs. of Internal Ballast Bonded Securely in Place

RUDDER

- Schedule 80 S/S Rudder Shaft with Integral Steel Backbone Surrounded with High Density Foam — Fiberglass Covered

DECK

- One Piece Fiberglass — Plywood and Balsa Core Reinforced
- Molded Non-Skid Surfaces
- Sun Lounge w/ Cushions & Cover
- Large Self-Draining Cockpit
- Teak Main Companionway Door & Hatch
- Sliding "Skylight Type" Main & Crew Cabin Hatches with Seahoods
- 4 Locking Amidships "Skylight Type" Aluminum Frame Hatches
- Bow Roller for Anchor & Mooring Bit
- Two Amidship Self-Draining Flush Deck Lockers — One for Three Propane Tanks — One for Spare Anchor Storage (Danforth 60H)
- 2 Foredeck Self-Draining Storage Lockers
- A Large Flush Lazarette Hatch Aft, Leading to a Storage Room Measuring about 4'X6' with 6' Headroom — Includes a Workbench with a Vise, Lockers and Drawers

STANDING AND RUNNING RIGGING

- Aluminum Boom & Mast with Air Foil Spreaders
- Internal "Gib Hook Type" Tangs for Standing Rigging
- Stainless Steel Chain Plates and Stem Fitting
- S/S 1 x 19 Wire with Swedged Fittings Standing Rigging
- Prestretched Dacron Running Rigging with Spliced on Fittings
- Internal Main & Jib Halyards
- Ball Bearing Main Sheet Traveler with Control Lines
- Split Back Stay
- White Polyurethane Coating on Mast & Boom
- A "Super Boom" with an Internal Outhaul and an Internal Reefing System for Two Sets of Reef Points
- S/S Boom Vang Bails on Boom & Base of Mast & Boom Vang Tackle
- All Halyards, Main Sheet, Boom Vang, Reefing Lines for Both Reefs, and Main Boom Topping Lift are Led Aft to a Custom 10 Gang Line Stopper and a Self-Tailing #28-ST-A Bariant

ELECTRICAL

- 6-12 Volt 240 AMP Marine Batteries Isolated into Three Banks
- Interior Lighting (12 Volt)
- 3 Electric/Manual Marine Heads with "Y" Valves for Overboard or Holding Tank Discharge. A Central System 50 Gallon Holding Tank with an Electric and a Manual Off-shore Pump Out System — Holding Tank is also Equipped for Shore Station Pump Out
- 110 Volt Electrical System — Includes Duplex Outlets Throughout, 40 AMP Battery Charger, Two 30 Amp Marine Deck Connectors with Circuit Breakers
- 3 Electric Bilge Pumps with Automatic Feature — One for Each Water Tight Compartment (Aft Bilge) (Engine Room Bilge) (Forward Bilge)
- International Navigation Lights
- Engine Room Lights
- Hot and Cold Pressure Water System

TANKAGE (approximate)

- 5 Fuel Tanks Totaling 1240 Gallons
- 2 Water Tanks Totaling 250 Gallons (More Capacity Available)

INTERIOR

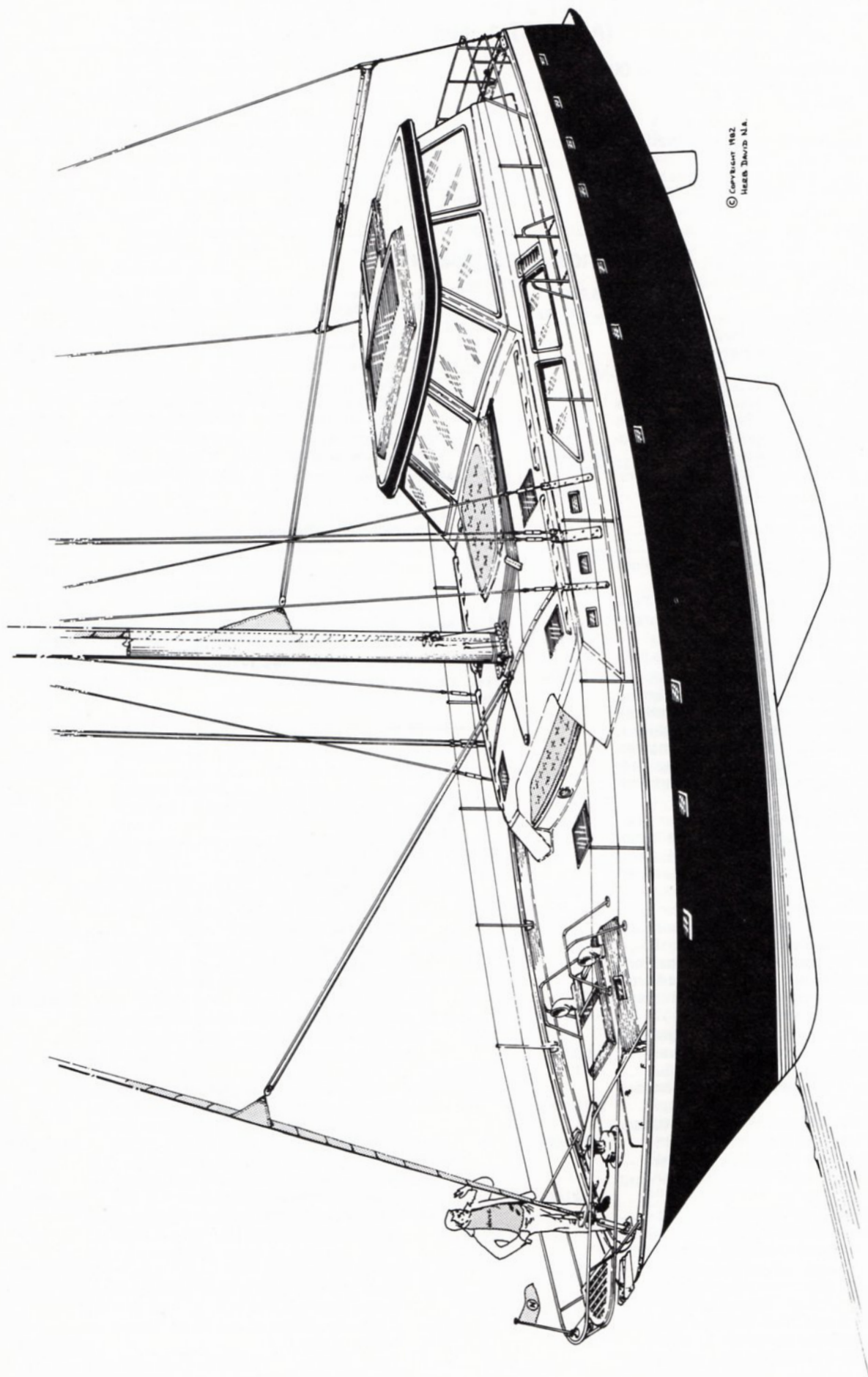
- Owners Cabin — Includes King Size (6' X 7') Canopy Bed with 5" Cushion, Walk-In Cedar Lined Closet, Dressing Table with Stage Lighting, Vanity with Large Mirror and Sink, Cedar Lined Drawers, Teak Ceilings (Hull Covering) Teak and Holley Sole, 2 Bookcase Alcoves, Four Opening Ports with Screens, 2 Full Length Mirrors. Owners Head Compartment Includes a Tub/Stall Shower with an Optional Sauna Steam Generator, and an Electric/Manual Marine Head with a Teak Cover
- Main Salon (Measuring Approximately 11' X 18') Includes Teak Chart Table with Chart Storage Area and Drawers, Dining Bar, Teak Storage Lockers with Cane Doors Port & Starboard, Fully Carpeted with Sound Blanket Padding Underneath, a Fixed 4' X 6' Skylight (Access for Engine Removable) Movable Furniture (Sofa, Stools, Tables, Etc.) Optional
- Galley — Two Norcold 110/12 Volt Double Door Refrigerators with Separate Freezer Compartments, S/S Gimballed Stove with Oven, Propane System with Three Aluminum Tanks and Solenoid Safety Shut Off System, Deep Double S/S Sink, Pressure Hot & Cold Water, Opening Ports with Screens, Overhead Ventilating Hatches, Sliding Storage Lockers, Drawers, Teak & Holley Sole, Large Dinette with Table
- Guest Head Compartment — Opening Port with Screen, Vanity with Mirror, S/S Sink and Drawers, Separate Stall Shower Compartment with Seat, Electric/Manual Marine Head, Locking "Skylight" Type Aluminum Framed Ventilating Hatch
- Forward Guest Stateroom — Queen Size Double Berth with 5" Cushion, Hanging Locker with Cane Door, Cedar Lined Drawers, Teak Ceilings (Hull Covering), Teak and Holley Sole; 2 Bookcase Alcoves, Four Opening Ports with Screens, "Skylight" Ventilating Hatch, Full Length Mirror
- Second Guest Stateroom — Double Berth with 5" Cushion, Hanging Locker with Cane Door, Full Length Mirror and Drawers, 2 Opening Ports with Screens, Teak & Holley Sole, Locking "Skylight" Type Aluminum Frame Ventilating Hatch
- Crew's Quarters — Separate Entrance from Foredeck, 2 Single Berths with Storage Under, Vanity with Mirror and S/S Sink, Separate Shower Compartment, Manual Operated Marine Head, 4 Opening Ports with Screens.

EXTERIOR

- Exterior Wood Trim and Handrails of Oiled Teak
- Two Bow, 2 Stern and 4 Amidships Mooring Cleats
- Full Length Anodized Aluminum Toerail
- Double Bow and Stern Pulpits and Double Lifelines with Gates Port and Starboard
- Stainless Steel Boarding Ladder with Teak Steps in Stern Pulpit Leading Down to Swim Platform
- Inboard Genoa Tracks with Wide Sheave Blocks & Turning Blocks (Not Standard with Pilot House Option)
- Wheel Steering System with S/S Wheel, Danforth 5" Compass with Binnacle, Engine Controls
- Tinted Translucent Forward and 4 Amidships and Main Companionway Hatches
- Large Sun Lounge (4' X 6½') Over Main Salon with Lounge Cushion and Weather Cover
- Main Sail with 2 Sets of Reef Points — Fiberglass Battens, Leach Line, Cunningham, Draft Stripes and Windowed Tell Tails
- 120% Genoa with Windowed Tell Tails, Leach Line, Draft Stripes and Sail Bag

DIMENSIONS

Length Overall (Including Standard Swim Platform)	65'-4"
Length Water line	55'-0"
Beam	17'-11"
Draft-Standard Keel	6'-11"
Draft-Shoal Draft Keel	5'-8"
Displacement (Single Engine)	55,000 lbs.
Ballast	14,000 lbs.
Bridge Clearance	87'-0"
Designer	Herb David



© Copyright 1982
HARBOUR DESIGN S.A.

LANCER 65

1984 LANCER 65 PRICE LIST & ORDER FORM (AUGUST 1, 1983)

Hull Number _____

L65 With All Standard Equipment \$395,000.00

Date _____

Hull Color _____ Boot Top Colors _____
Top Middle Lower

Sheer Stripe Color _____ Deck Color _____ Non Skid Color _____

Cushion Color _____ Carpet Color _____

OPTIONAL EQUIPMENT

_____ M-1	Shoal Draft Keel 5'-8"	6,985.00
_____ M-2	Colored Non Skid on Deck	641.00
_____ M-3	Fully Enclosed Pilot House, Includes Sliding Sunroof with Seahood, Nine Fixed Safety Plate Windows, Teak Entrance Door, Plush 5" Upholstered Seating All Around, Upholstered Backrest Cushions with Storage Lockers Behind, Teak and Holley Sole, Windshield Wiper, Windshield Washer and Electric Horn	18,900.00
_____ M-4	Opening Pilot House Windows (Sliders) (Each)	150.00
	Starboard Side ..Fore _____ Aft _____	
	Port Side ..Fore _____ Aft _____	
	Aft ..Port _____ Starboard _____	
_____ M-5	Upholstered Helmsman Seat with Foot Rest	584.00
_____ M-6	Cockpit Table — Solid Teak, Folding Type (approximately 4' X 5') with Storage Lockers	1,696.00
_____ M-7	Teak Cockpit Sole (Teak & Holley Sole Standard with Pilot House)	1,875.00
_____ M-8	Flying Bridge, Includes a Second Steering Station, a Complete Set of Dual Controls and Engine Instruments, Seat Cushions, Flying Bridge Acralon Cover, Helmsman Seat, Stainless Steel Bridge Access Ladder and Compass (Must be Ordered with Pilot House Option)	17,100.00
_____ M-9	Additional Double Stateroom — Starboard Side (Eliminates Dinette and Table) Includes Double Berth, Hanging Locker, Full Length Mirror, and Cedar Lined Drawers	3,800.00
_____ M-10	Additional Double Stateroom — Port Side (Occupies Galley Area on Standard Layout). Galley is Relocated Up into Salon Area ("L" Shaped, Forward and to Port) Double Stateroom Includes Double Berth, Hanging Locker, Full Length Mirror and Cedar Lined Drawers	5,400.00
_____ M-11	Colored Hull (Colors Other Than White or Camel Brown)	1,099.00
_____ M-12	Bottom Paint (Anti-Fouling)	811.00
_____ M-13	Teak Cap Rail to Replace Standard Aluminum Toe Rail	2,132.00
_____ M-14	150 Gallon Additional Water Tank (Under Forward Guest Cabin Berth)	530.00
_____ M-15	Salt Water Deck Washdown System — Two Outlets — One Aft — One Forward (Anchor Washdown)	695.00
_____ M-16	Fresh Water Deck Washdown System — Two Outlets — One Forward — One Aft — Also Includes Hot & Cold Outside Shower Head Located on Deck Aft	752.00
_____ M-17	Barient #32-ST-A 2 Speed Self-Tailing Winch to Replace Standard #28 Two Speed Self-Tailer, Combination Halyard-Main Sheet & Reefing Winch	580.00
_____ M-18	Barient #36-ST-A 2 Speed Self-Tailing Winch to Replace Standard #28 Two Speed Self-Tailer, Combination Halyard-Main Sheet & Reefing Winch	1,500.00

_____ M-19	Barient #28-ST-PW-C 2 Speed Electric Self-Tailing Winch to Replace Standard #28 Self-Tailer, Combination Halyard-Main Sheet And Reefing Winch	2,525.00
_____ M-20	Barient #32-ST-PW-C 2 Speed Electric Self-Tailing Winch to Replace Standard #28 Two Speed Self-Tailer, Combination Halyard-Main Sheet and Reefing Winch ..	2,875.00
_____ M-21	Sheet Winches (2 #28-ST-A Barient 2 Speed Self-Tailing)	2,650.00
_____ M-22	Sheet Winches (2 #32-ST-A Barient 2 Speed Self-Tailing)	3,810.00
_____ M-23	Sheet Winches (2 #36-ST-A Barient 2 Speed Self Tailing)	5,650.00
_____ M-24	Sheet Winches (2 #28-ST-PW-C Barient Electric 2 Speed Self-Tailing)	7,700.00
_____ M-25	Sheet Winches (2 #32-ST-PW-C Barient Electric 2 Speed Self-Tailing)	8,400.00
_____ M-26	Sheet Winches (2 #36-ST-PW-C Barient Electric 2 Speed Self-Tailing)	10,000.00

For Additional Barient Winches Available, See Barient Catalog at Your Lancer Dealer. Add \$30.00 Each-Manual (\$100.00 Each-Electric) to List Price for Installation.

_____ M-27	Solid Winch Handle, 10"	42.00
_____ M-28	Lock In Winch Handle, 10"	77.00
_____ M-29	Emergency Tiller	150.00

NOTE: 3 BLADE FEATHERING PROPELLERS ARE STANDARD ON ALL ENGINE INSTALLATIONS

_____ M-30	Single Perkins 6-3544M Diesel Engine (130 H.P. @ 2800 R.P.M.) (1414 Lbs.) Approximate Maximum Speed 11.0 M.P.H.	22,234.00
_____ M-31	Single Perkins ST6-3544M Turbocharged Diesel Engine (200 H.P. @ 2400 R.P.M.) (1500 Lbs.) Approximate Maximum Speed 11.5 M.P.H.	25,552.00
_____ M-32	Single Perkins SST6-3544 Turbocharged Engine (240 H.P. @ 2400 R.P.M.) (1550 Lbs.) Approximate Maximum Speed 11.8 M.P.H.	27,488.00
_____ M-33	Single Perkins TV8-540M Turbocharged Diesel Engine (350 H.P. @ 2600 R.P.M.) (2228 Lbs.) Approximate Maximum Speed 13.0 M.P.H.	37,861.00
_____ M-34	Twin Perkins 6-354M Diesel Engines (130 H.P. @ 2800 R.P.M.) (1414 Lbs. Each) Approximate Maximum Speed 12.1 M.P.H. .	44,466.00
_____ M-35	Twin Perkins ST6-3544M Turbocharged Diesel Engines (200 H.P. @ 2400 R.P.M.) (1580 Lbs. Each) Approximate Maximum Speed 13.0 M.P.H.	51,346.00
_____ M-36	Twin Perkins SST6-3544 Turbocharged Diesel Engines (240 H.P. @ 2400 R.P.M.) (1550 Lbs. Each) Approximate Maximum Speed 14.0 M.P.H.	54,976.00
_____ M-37	Twin Perkins TV8-540M Turbocharged Diesel Engines (350 H.P. @ 2600 R.P.M.) (2228 Lbs. Each) Approximate Maximum Speed 16.50 M.P.H.	75,722.00

— M-38	Bow Thruster — Vetus Bow-Jet-A Centrifugal Pump Powered by a 6.8 H.P. Electric Motor Sucks Water Through the Bottom of Boat and Forces It Out Through 1 3/16" Diameter Outlet Openings on the Port or Starboard Side of Bow Below the Waterline. Minimum Drag Under Sail & Power (100 Lbs. Thrust)	7,360.00
— M-39	Bow Thruster — Vetus Propeller Type — An Electric Motor Drives a 7 1/8" Diameter Propeller in a Fiberglass Tube Located in the Bow, Perpendicular to the Centerline (100 Lbs. Thrust)	3,625.00
— M-40	Curtains on All Windows Standard Model	545.00
	Pilot House Model	770.00
— M-41	Mainsail Cover	500.00
— M-42	Cockpit Cover	580.00
— M-43	Custom Full Width Cockpit Dodger With Side Curtains	1,800.00
— M-44	Cockpit Cushions (Standard with Pilot House)	616.00
— M-45	Washer/Dryer-Frigidaire Laundry Center — Single Cabinet Stack Unit. Separate Washer and Dryer Functions	1,585.00
— M-46	Electric Stove with Oven to Replace Standard Propane Stove (Generator Option Must Be Ordered)	125.00
— M-47	Trash Compactor Installed Complete in Galley	780.00
— M-48	Sauna System — Electric Steam Generator Installed in Owners Head Compartment	1,260.00
— M-49	Telephone Inlet, One Outlet...(Each)	270.00
— M-50	Telephone Outlet, Additional...(Each)	185.00
— M-51	50' Marine Shore Power Cord...(Each)	114.00
— M-52	Salt Water Pump in Galley	176.00
— M-53	Manual Gusher Bilge Pump...(Each)	315.00
	Engine Room Forward Bilge Aft Bilge	
— M-54	Kenyon KS/KL-400B Speedometer With Log (Installed) — 1/2" LCD Digital Readout Indicates Boat Speed from 0-19.99 Knots. An Electromechanical Log Records and Gives a Continuous Display of Distance Traveled. Front-Mounted Controls are Provided for Speedometer Averaging and Log Reset. Flush-Mounted Bronze Thru-Hull and Removable Paddlewheel Transducer. Remote Panel has Power Switch and Night Light Controls. 5" Round Black Bezel	743.00
— M-55	Kenyon AW/WS-400B Wind System (Installed) — Dual Function Wind System Instrument Provides an Unbroken 360° Display of Apparent Wind Direction and 1/2" LCD Digital Readout of Wind Speed from 0-99 Knots. Supplied with Complete Masthead Unit. Remote Panel has Power Switch and Lighting Control. 5" Round Black Bezel	1,238.00
— M-56	Kenyon DS-400B Depth Sounder (Installed) — 3/4" LCD Digital Readout Indicates Depth from 0-300'. Alarm Set (1'-50') and Gain Controls are Front-Mounted for Convenience. An Audible as Well as Visual Alarm are Standard. Switch for Either Depth from Keel or Surface is at Remote Panel, Which Also has Power Switch and Light Controls. 5" Round Black Bezel	820.00

For Additional Kenyon Instruments Available See Kenyon Catalog at Your Lancer Dealer. Add \$140.00 Each to List Price for Installation.

— M-58	Raytheon — Ray 53, 25 Watt VHF/FM Marine Radio Telephone — Solid State Circuitry, Fully Synthesized, All U.S. VHF/FM Marine Channels, 54 Channel Transmit and 61 Receive, LED Readout Shows Operating Channel, Four Weather Channels for Continuous Area Forecasts. Installed Complete with Mast Head Antenna	888.00
— M-59	Raytheon — Ray 55 International, 25 Watt VHF/FM Marine Radio Telephone — Solid State Circuitry, Fully Synthesized — All U.S. and International VHF/FM Marine Channels — 55 Channel Transmit and 72 Receive — LED Readout Shows Operating Channel — Four Weather Channels for Continuous Area Forecasts. Installed Complete with Mast Head Antenna	1,041.00
— M-60	VHF Mast Head Antenna with Coaxial Cable Wired to Navigator's Station (Standard with Radio Installations)	266.00
— M-61	Raytheon — Ray 350 Loudhailer and Horn — Projects Your Voice Over Long Distances, Also a Sensitive Across-the-Water Listening Device-Fog Horn-Yelping Emergency Alarm (Installed)	757.00
— M-62	Raytheon 2600 Pathfinder Radar 6 Inch Display Magnified to 8 Inches — 24 Mile with 6 Range Scales Installed on Pilot House Top	6,290.00
	Installed on Mast at First Spreader ..	6,985.00
— M-63	Raymark Seaguard MKI Optional Radar Accessory Provides a Variable Range Marker and a Selectable Full 360° Guard Ring Adjustable from 1/3 to 6 Miles. When the Guard Ring is Penetrated by a Vessel, a Buoy or Land Mass both Visual and Audible Alarms Occur	795.00
— M-64	Raytheon — Raynav 6000 Loran C — Fully Automatic Acquisition and Tracking of Master and Five Secondary Stations — Direct Latitude and Longitude, Course and Speed Readouts. (Installed)	5,600.00
— M-65	Raytheon Weather Chart Receiver-Rayfax 300 Radio Facsimile Receiver/Recorder — Provides Onboard Recording of Weather Charts and Other Facsimile Broadcasts (Fishery Charts, News, Etc.) at a Modest Cost. Just Push a Button, Current Weather, Wave Heights, Sea Ice Conditions, Surface Temperature, Hurricane Tracks ... All the Valuable Charts Broadcast by WMO (World Meteorological Organization) are Automatically Reproduced. Features 8 Interchangeable Push-Button Station Selectors. These can be Pre-Set for Any of the More Than 50 Worldwide Facsimile Stations	4,700.00
— M-66	Raytheon — Raysat 100 Satellite Navigator Acquires and Displays Very Accurate Latitude/Longitude Fixes. Between Satellite Fixes Computer-Generated Dead Reckoning Fixes are Shown. Also Displayed are Date and UTC-Time Since Last Satellite Fix-Time and Angle of Next Fix-Ships Speed Set and Drift-Data From Up to 10 Way Points Including Bearing and Course-to-Steer for Rhumb or Great Circle Tracks and Distance Run	6,400.00
— M-67	Windex Masthead Wind Indicator	63.00
— M-68	Hydraulic Backstay Adjuster	1,165.00
— M-69	Electric-Vertical Anchor Windlass (3000 Lbs. Pull) for Handling Line or Chain-Wildcat, Clutch, Chain Stripper and Foot Switch Above Deck-Motor and Gearbox Below Deck — Includes Chain Run Counter and can be Manually Operated ..	3,790.00
— M-70	Anchor with 300' of 3/8" High Test (5400 lbs) Hot Galvanized Chain, Anchor Locks into Standard Bow Roller	2,382.00

— M-57	Rudder Angle Indicator	495.00
--------	------------------------------	--------

— M-71	Autopilot-Benmar Proportioned Rate Course Setter #21 Installed Complete . . .	3,495.00	— M-93	Internal Furling Mainsail System (Furls into Mast) to Replace Standard Mast, Boom and Mainsail (No Boom, to be Used with Pilot House and Flying Bridge Models) . .	16,044.00
— M-72	Autopilot-Wagner (Series 50) Commercial Duty — Adjustable Rudder Control — Automatic Rudder Trim — Proportional Rate Type, Installed Complete	4,491.00	— M-94	Self Tacking Roller Furling 100% Jib with Sailcover, Includes a Deck Mounted Traveller Track and Car, Furling Line and Sheet Led Back to Cockpit (to Replace Standard 120% Genoa)...(Recommended with Pilot House)	4,108.00
— M-73	Docking Lights, Transom (Pair)	855.00	— M-95	150% Genoa	4,492.00
— M-74	Docking Lights, Bow (Pair)	870.00	— M-96	150% Reacher	4,003.00
— M-75	Watermaker (200 Gallons Per Day) Reverse Osmosis Desalinators — Weighs Less Than 90 Lbs. Completely Installed . .	5,360.00	— M-97	Roller Furling System with 150% Genoa and Sail Cover to Replace Standard 120% Genoa	3,982.00
— M-76	Watermaker (400 Gallons Per Day) Reverse Osmosis Desalinators — Weighs Less Than 90 Lbs. Completely Installed . .	5,925.00	— M-98	Tri-Radial Spinnaker Sail (3/4 Oz.)	6,242.00
— M-77	Stereo System — AM/FM — Four Speakers & Tape Deck Cassette _____ 8 Track _____	623.00	— M-99	Spinnaker Gear Includes: Internal Spinnaker Halyard — Internal Pole Lift — Spinnaker Pole With Deck Chocks — Mast Track and Car-Fore Guy-After Guy-Sheet — 2 Rubber Shell Snatch Blocks . .	3,255.00
— M-78	T.V. Antenna, RCA Rotating, One Jack . .	455.00	— M-100	Poleless Cruising Spinnaker (1.5 oz.) (Radial Head) With Rubber Shell Snatch Block, Sheet, Tack Line & Spinnaker Halyard, Includes Quick and Easy Setting & Dowsing Sleeve	5,350.00
— M-79	T.V. Outlets...Additional...Each	190.00	— M-101	Shipping Cradle — Returnable (Made of Steel) with Casters	7,200.00
— M-80	Teak Settee for Main Salon (Double Converti-Bed Sofa) with Storage Under and Behind Cushions	1,095.00	— M-102	Safety Package Includes: 8 Life Jackets, 4 Fenders, 6 Dacron Dock Lines, 1 Danforth Type 60H Anchor, with 20' of 1/2" Chain and 200' 5/8" Line, 3 Fire Extinguishers, 3 Hand Held Flares, 1 Bell	1,851.00
— M-81	Bar Stools with Brass Trim...Each	108.00	— M-103	Factory Commissioning in Newport Beach, California Includes: Freight from Factory to Water, Charges for Launching & Stepping Mast, Rigging & Tuning Mast, Bending on Sails, Doing an Operational Check on All Equipment, Clean-Up, Sea Trials and Delivery to Customer in Newport Beach, California — Standard Model (Includes Compass Compensation)	5,800.00
— M-82	4 KW Yanmar, Fresh Water Cooled, Diesel Generator Plant with Remote Starter and Water Lift Muffler (Can Be Hand Started) .	6,591.00	—	— Pilot House Model (Includes Compass Compensation)	6,300.00
— M-83	7.5 KW Yanmar, Fresh Water Cooled, Diesel Generator Plant with Remote Starter and Water Lift Muffler (Can Be Hand Started)	7,350.00	—	— Flying Bridge Model (Includes Compass Compensation)	6,900.00
— M-84	12.5 KW Onan Fresh Water Cooled, Diesel Generator Plant with Remote Starter and Water Lift Muffler	9,800.00			
— M-85	Sound Shield for Generator Sets with Durasonic Shroud, Includes Fan, Mounting Platform and Drip Pan	752.00			
— M-86	Princess, Marine Microwave Oven (Installed)	762.00			
— M-87	Marine Air Conditioning Reverse Cycle (Heating & Cooling) (48,000 B.T.U.) Installed (Must be Ordered with 12.5 KW Generator Set) Outlets in All Cabins Including Crew's Quarters	11,250.00			
—	With Pilot House	13,600.00			
— M-88	Teak Hubrail With Stainless Steel Striker .	2,350.00			
— M-89	Seafire Automatic Fire Extinguishing System for Engine Room — Halon 1301 System Produces No Harmful Amounts of By-Products and No Residue	655.00			
— M-90	External Roller Furling Mainsail System with Boom and Sailcover to Replace Standard Mast, Boom and Mainsail	5,656.00			
— M-91	External Roller Furling Mainsail System and Sail Cover to Replace Standard Mast, Boom and Mainsail (No Boom — to be Used with Pilot House and Flying Bridge Models)	2,350.00			
— M-92	Internal Furling Mainsail System with Boom (Furls into Mast) to Replace Standard Mast, Boom and Mainsail	19,444.00			

Lancer Yacht Corporation will commission the Lancer 65 with factory personnel any place in the world for the above prices (plus one man's round trip air fare). The owner will be required to pay the freight from the Lancer factory to the commissioning yard.

DEALER _____
 (ADDRESS) _____ (PHONE) _____
 SELLING PRICE _____ FREIGHT _____
 TOTAL SELLING PRICE _____ DEPOSIT _____
 BALANCE DUE C.O.D. _____
 DEALER SIGNATURE _____

RETAIL CUSTOMER _____
 (ADDRESS) _____ (PHONE) _____
 SELLING PRICE _____ FREIGHT _____
 TOTAL SELLING PRICE _____ DEPOSIT _____
 BALANCE DUE C.O.D. _____
 RETAIL CUSTOMER SIGNATURE _____

All prices and specifications are subject to change at any time including after receipt of Customer's order, until final delivery to the customer — drawings in this brochure may show optional equipment — All speeds indicated in this brochure are engineering estimates using favorable conditions and are therefore not guaranteed