

Each measurement given which is followed by a box ☐ is to be checked by your fleet measurer and checked ☒ to certify that it is within the dimension given.

(Total min weight 310 lbs. Refer to Article XIII Para. 7 of By-Laws for equipment to be included.)

Boat Weight \_\_\_\_\_ LBS  
 Required Ballast Wt. \_\_\_\_\_ LBS

(Total min weight 310 lbs. Refer to Article XIII Para. 7 of By-Laws for equipment to be included.)

C. B. Jibe 1/4" Total Max. \_\_\_\_\_ ☐  
 C. B. Extended (Article XIII Para 5) \_\_\_\_\_ ☐

SHROUDS AND FORESTAY AT MAST  
 HALYARD FITTING ☐  
 7" ± 1/4"

SPREADER LENGTH 6" ± 1/4" ☐  
 NOT INCL. ADJUSTING SCREW

DIAMOND STAYS TO BE STRAIGHT (NO SAG) WITH MAST SUPPORTED HORIZONTALLY FROM ITS ENDS AND SPREADERS VERTICAL ☐

6' - 0" MAX INCL. FITTINGS

FORESTAY PIN ☐  
 50-1/2" ± 1/4"

BOW FLOTATION TANK (OPTIONAL)

PIVOT POINT

12 7/8" ± 1/4" ☐  
 C. B. AT WIDEST POINT

7/8" ± 1/8" THICK MAX. FROM TOP TO WITHIN 8" OF BOTTOM (USE JIGS) ☐

C. B. 11 lb. min. 18 lb. Max. ☐

11 7/8" ± 1/4" ☐  
 TRACK

18-1/8" MAX LENGTH ☐

18" ± 1/8" TRAVELER ☐

3/4" ± 1/8" THICK MAX FROM TOP TO WITHIN 5" OF BOTTOM (USE JIGS) ☐

24" ± 1/4" ☐  
 10" ± 1/4" ☐

9' - 9 1/4" ± 1/4" ☐  
 MAX. 24" TILLER EXT. ☐  
 45" ± 1/4" ☐  
 OUTHAUL

VANG

71 1/2" ± 1/4" ☐  
 67 1/8" ± 1/4" ☐  
 13' 11" ± 1/4" ☐  
 18' 5" ± 1/4" LOA (including fittings) ☐  
 16' 11" ± 1/2" from top of 3/4" blackband ☐

2 1/2" ± 1/4" ☐

FLOTATION

LOOKING AFT LOOKING FORWARD

CENTERBOARD SLOT 1 1/8" ☐  
 MIN. INSIDE WIDTH

### SAIL MEASUREMENTS

Each suit of sails must be measured according to Article XIV of the current issue of the LIDO 14 CLASS ASSOCIATION BY-LAWS and the dimensions given below, and stamped by your Fleet measurer and have the LIDO 14 royalty tag sewn on.

**MAIN**

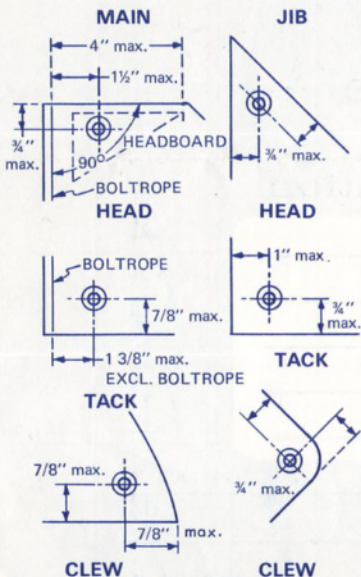
4" max.  
 1 1/2" max.  
 3/4" max.  
 90°  
 HEADBOARD  
 BOLTROPE HEAD

**JIB**

3/4" max.  
 HEAD  
 BOLTROPE

1" max.  
 3/4" max.

Each suit of sails must be measured according to Article XIV of the current issue of the LIDO 14 CLASS ASSOCIATION BY-LAWS and the dimensions given below, and stamped by your Fleet Measurer and have the LIDO 14 royalty tag sewn on.



L.O.A. \_\_\_\_14'0" Beam \_\_\_\_6'0" Wgt. \_\_\_\_310 #  
 Floatation \_\_\_\_640#(Approx.); Hull, Deck, C. B.Trunk,  
 all molded. Fiberglass reinforced. Plastic color  
 impregnated.  
 Sails: Main, 76 sq. ft. Jib, 35 sq. ft.  
 Spars: Aluminum.  
 NOTE: Do not scale.

Signature of Owner \_\_\_\_\_

Signature of Fleet Measurer \_\_\_\_\_ Date \_\_\_\_\_

Boat Number and Fleet of Measurer \_\_\_\_\_

Signature of  
Chief Measurer \_\_\_\_\_ Date \_\_\_\_\_