

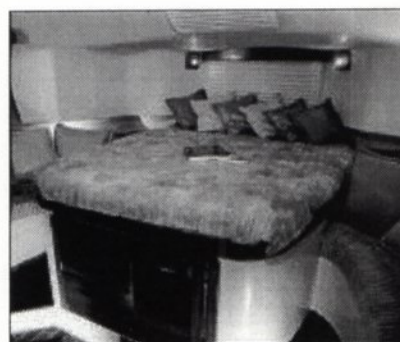


The Morgan 38 is designed to exceed the performance and handling requirements of experienced sailors while also providing a high level of comfort in a modern cruising yacht.

The deck is unique among center cockpit yachts her size. The cockpit is deep with high comfortable seat backs and an elevated helm seat.

The doubled ended mainsheet and self-tailing winches are within easy reach of the helmsman. All halyards and sail controls are led aft and with available furling all sail handling can be managed from the security of the cockpit. The handy locker in the port coaming is long enough for dinghy oars.

The weather decks are wide and unobstructed, with secure bulwarks at the rail, a seaworthy feature seldom found on modern yachts.



The contemporary stern provides space for lockers port and starboard and a large stern platform with twin access stairs.

A hot and cold stern show is standard. Anchor handling is simplified by the standard electric windlass installed in the anchor storage locker and stout bow roller.

The mast has double spreaders and fore and aft lowers, a very secure arrangement that is easy to keep tuned properly. The painted spars, mainsail flaking systems, spring loaded vang and cockpit light on the boom are all standard on the Morgan 38.



The Morgan 38 interior is a skillful combination of traditional craftsmanship and contemporary space planning and design. The result is light filled, comfortable, and livable. The galley is exceptional with good storage, refrigerator, and countertop space.

The owners stateroom aft is unrivaled, with a specially constructed heavy duty hatch aft creating a dramatic vista from the large centerline berth, as well as excellent ventilation. The owner's head compartment completes the suite aft. It is both functional and beautiful, and the stall shower can also be used as a wet locker.

The second stateroom forward also has an adjoining head. Both heads are molded fiberglass single piece compartments that are easy to keep clean and fresh.

The main cabin is elegantly detailed in hand-rubbed varnished teak, satin finished ash battens and a high gloss teak and holly veneer cabin sole.

The quality hardware on deck and finish below are the most visible manifestations of Morgan's commitment to quality. less visible but even more important quality features are the engineered fiberglass sub-sole structural system, the through deck mast support system and balsa core construction.

An inspection of the engine compartment will reveal mechanical, electrical, and plumbing systems that are well conceived and executed to exceed industry standards.

Morgan Marine is committed to building high quality, well designed cruising yachts that offer real value and long-term satisfaction to experienced owners.

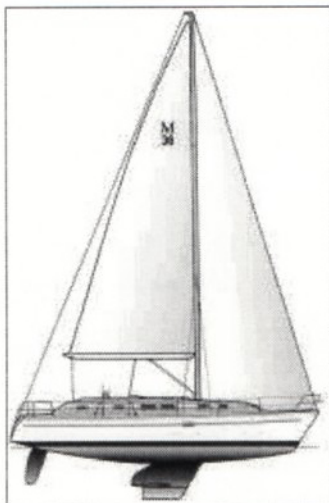
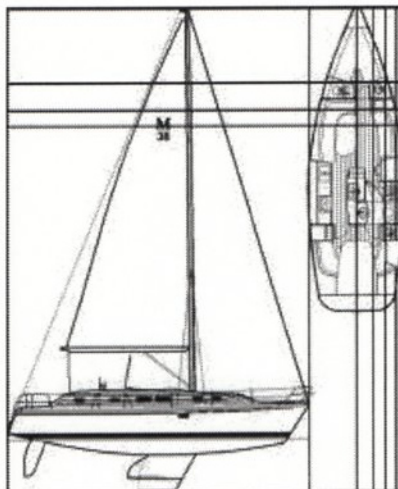
With the support and resources of Catalina Yachts, America's largest sailboat builder, this goal is realized in the Morgan 38.

Morgan is confident a thorough inspection of the 38 will develop an appreciation of Morgan quality and encourage you to become a proud Morgan owner.

SPECIFICATIONS

PRINCIPAL SPECIFICATIONS

L.O.A.	11.71m	38'-5"
LWL	9.88m	32'-5"
Beam	3.78m	12'-4"
Draft Std	1.98m	6'-6"
Draft Wing	1.52m	5'-0"
Ballast	3080kg	6800lbs
Displacement	7928kg	17500lbs
Engine		38hp
SAIL AREA (100% Fore)	65.11m sq	700 sq ft.
I	15.39m	50'-6"
J	4.47m	14'-8"
P	12.85m	42'-2"
E	4.78m	15'-8"



Return to Home ➡