

MORGAN

41



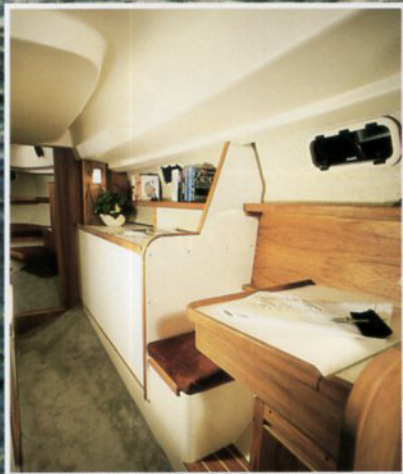
Traditional Quality, Contemporary Style



The new, luxurious main cabin has several chairs and a U-shaped dining area. The table folds down when not needed, opening up the main cabin for lounging and entertaining. The cabinets outboard will accommodate your electronic entertainment equipment.



The passage to the aft cabin. Note the increased headroom, navigation desk, and large working surface aft.



The aft cabin has a private head and a large stall shower with seat. The surfaces are easy care fiberglass, and plastic laminate trimmed in solid teak. A second head is forward for crew or guests.



The aft cabin has a very large double berth. This cabin also has a hanging locker, bureau, and dressing seat. Overhead ports and overhead hatches provide plenty of light and ventilation.

The Morgan 41

INTRODUCING A MODERN CLASSIC THE MORGAN CLASSIC 41

"Catalina Yachts has made sailing's best idea even better. Congratulations and well done!"

*-Charlie Morgan-
Founder, Morgan Yachts*

With a heritage forged in the charter industry, the Morgan Classic 41 offers the finest combination of design, performance and comfort. It is a remarkable meld of a proven, original design and thoughtful refinement by America's leading sailboat builder, Catalina Yachts.

The Morgan tradition is established by over a thousand Morgan 41's, most all of which are cruising the seas today.

Coming aboard a Morgan Classic 41 is a treat. The cockpit, a primary center for socializing, has single level seating. Additional seating has been built into the aft cabin coach roof behind the helmsman. Skippers report that the center cockpit design accommodates ten people in comfort.

Down below, the Classic 41 is a model of luxurious spaciousness and livability. It is very open and airy, 17 opening ports, and 5 opening deck hatches ensure excellent ventilation.

Teak bulkheads and cabinets and soft fabrics set off a voluminous main saloon, creating a comfortable, relaxing, lounging and dining area for the whole crew.

Storage is abundant. There is room behind and under the berths, ample shelving, and an extraordinary number of lockers, drawers and cabinets.

The Classic 41 gourmet galley is a centerpoint of thoughtful design and handy conveniences. The countertop is trimmed in teak with easy-clean white plastic laminate. The galley is a seaworthy U-shaped configuration. Overhead cabinets offer secure storage without infringing on the 6' headroom. There's a built-in space for the optional microwave oven, and a gimbaled stainless steel stove and oven. The dry food locker takes standard-sized grocery bags, filled and standing neatly next to each other. The deep bowl double sink is of stainless steel, and the ice box is large and divided, and has removable wire racks.

In the Classic 41 aft cabin, opening ports enhance lighting and ventilation, and a new floor plan provides for a private head and shower and plenty of storage.

The passageway to the aft cabin has an opening port, increased headroom and a large countertop which can be used as a workbench.

The forward cabin is designed with the guests or crew in mind. It has a private access to the head, access to the forward hanging locker and wide shelves for extra storage. Ventilation is assured in any climate with numerous opening ports and an overhead hatch.

The Morgan Classic 41 - a modern classic from Catalina Yachts...and a skipper's passport to seafaring adventures.



The galley is a pleasant place to be on the Morgan 41. Adjacent to the main cabin and companionway, the cook is a part of the social activity, yet out of the traffic flow. There is plenty of storage and working countertop space. An overhead hatch ensures good galley ventilation.

Photos may show optional equipment.



Built in the U.S.A.

MORGAN

41

PRINCIPAL SPECIFICATIONS

LOA	41'3"
LWL	34'0"
BEAM	13'10"
DRAFT	4'10"

DESIGNED WEIGHT

(Approx.) 23,000 lbs.

LEAD BALLAST 8,500 lbs.

FUEL 85 gallons

WATER 215 gallons

SAIL AREA 780.50 ft²

JIB/100% OF

FORE TRIANGLE 393.75 ft²

MAIN 386.75 ft²

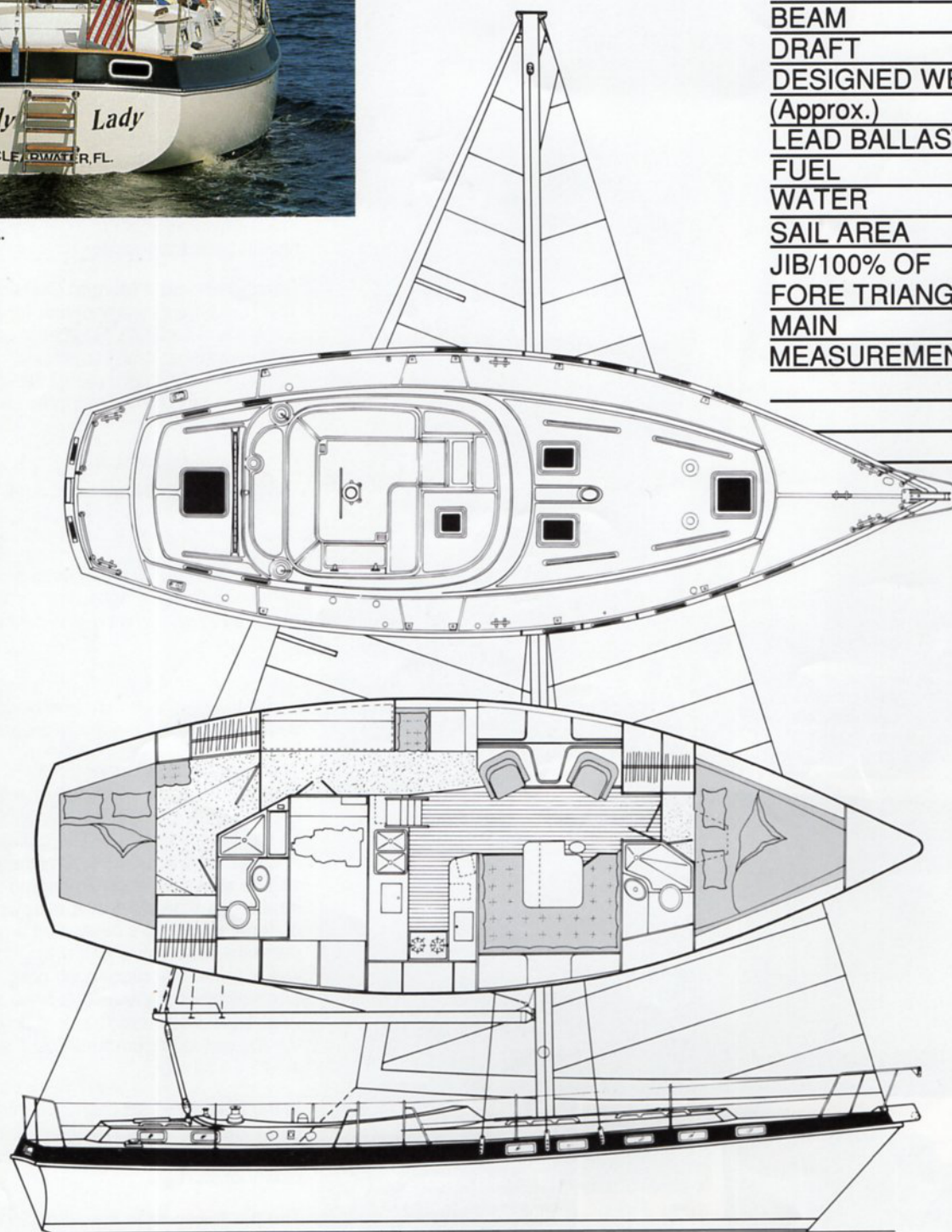
MEASUREMENT: I 52.5'

J 15.0'

P 45.5'

E 17.0'

*All measurements are approximate



BY:

Catalina Yachts

SOLD AND SERVICED BY: