



NELSON/MAREK YACHT DESIGN

2829 CANON ST.
SAN DIEGO, CA 92106

NELSON/MAREK 41' IOR RACER

PRINCIPAL DIMENSIONS

LENGTH OVERALL	-40.7
LENGTH WATERLINE	32.9
BEAM - MAX	12.59
DRAFT	7.29
DISPLACEMENT	14,000
SAIL AREA (150%)	1039 sq ft

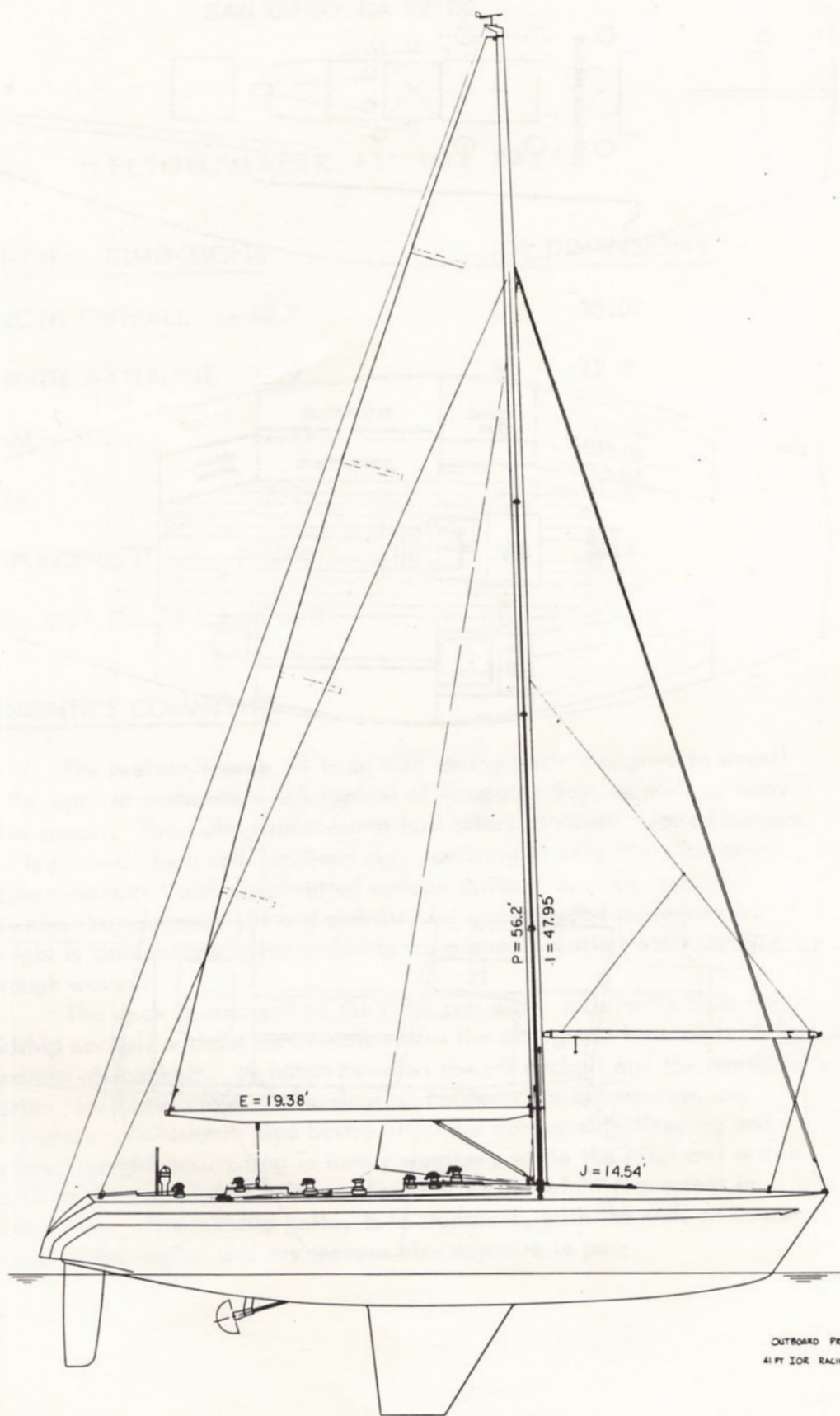
IOR DIMENSIONS

L	35.02
B	12.3
D	4.08
S	31.8
MR	36.4
R	34.3

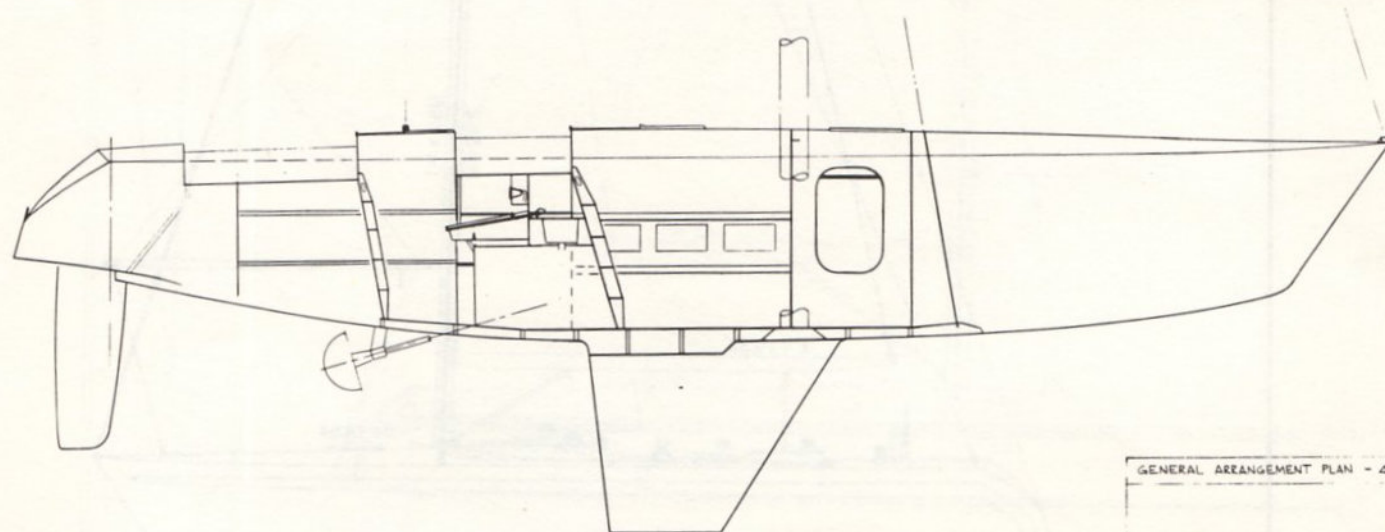
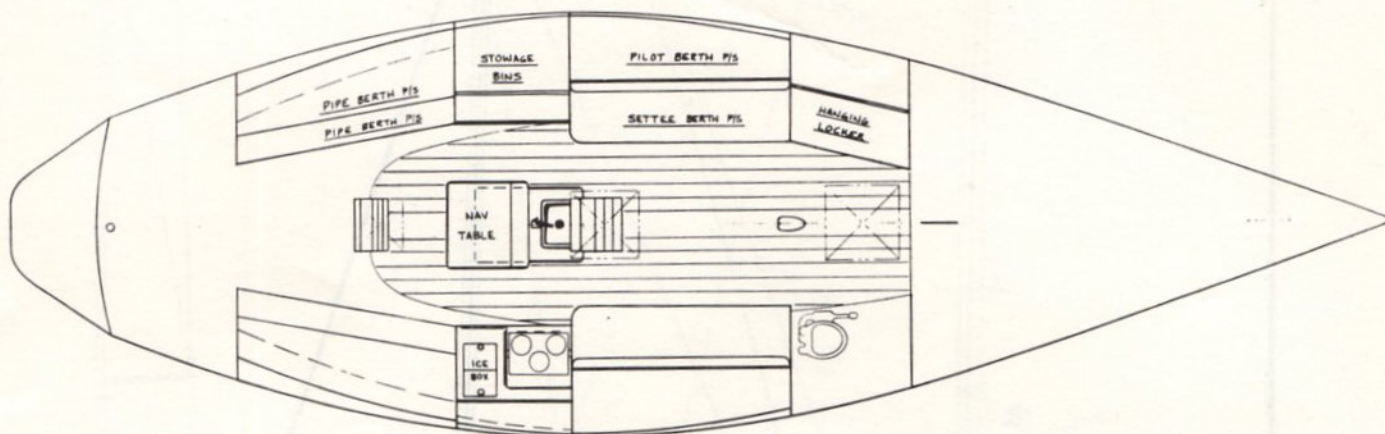
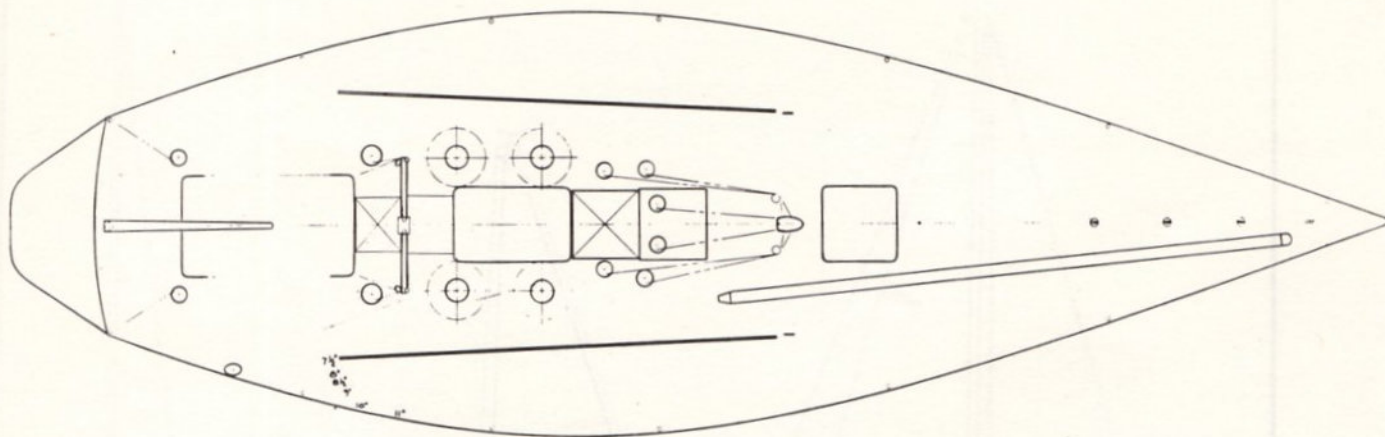
DESIGNER'S COMMENTS:

The Nelson/Marek 41 is an IOR racing yacht designed to excel in the light to moderate winds typical of Acapulco Bay, as well as many other areas. The light displacement hull offers minimum wetted surface and is powered by a tall masthead rig, resulting in very high sail area/displacement and sail area/wetted surface ratios. A deep lead keel provides the necessary lift and stability for good upwind performance. Weight is concentrated near amidship for a smooth motion while sailing through waves.

The deck is arranged so the crew can work efficiently from the midship cockpit without interference from the afterguard located in their separate aft cockpit. A hatch between the aft cockpit and the navigator's station facilitates close communication between the helmsperson and navigator. Adjustable pipe berths aft allow comfortable sleeping and optimum weight positioning in heavy weather, while the pilot and settee berths in the main cabin offer comfort and ideal weight placement in light winds. The midship galley is to starboard, with the sink on centerline over the engine and dry storage bins opposite to port.



OUTBOARD PROFILE
41 FT IOR RACING SLOOP



GENERAL ARRANGEMENT PLAN - 41 FT 9 LUG

NELSON, MARK YACHT DESIGN

2029 Canon Street San Diego, Ca. 92106

This drawing is based on the design of the vessel as shown on the plan and is intended for the construction of the vessel. It is not to be used for any other purpose without the written consent of the designer.

OWN BY: S. NELSON SCALE: 1/4" = 1'-0" (1:24)
DATE: APRIL, 1979 TANK NO. 4101-12