

design

# NESS BOAT

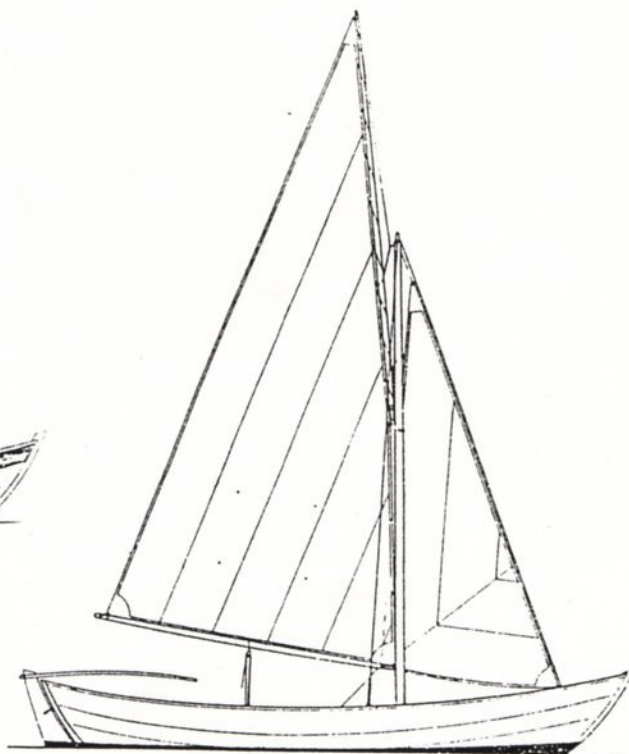
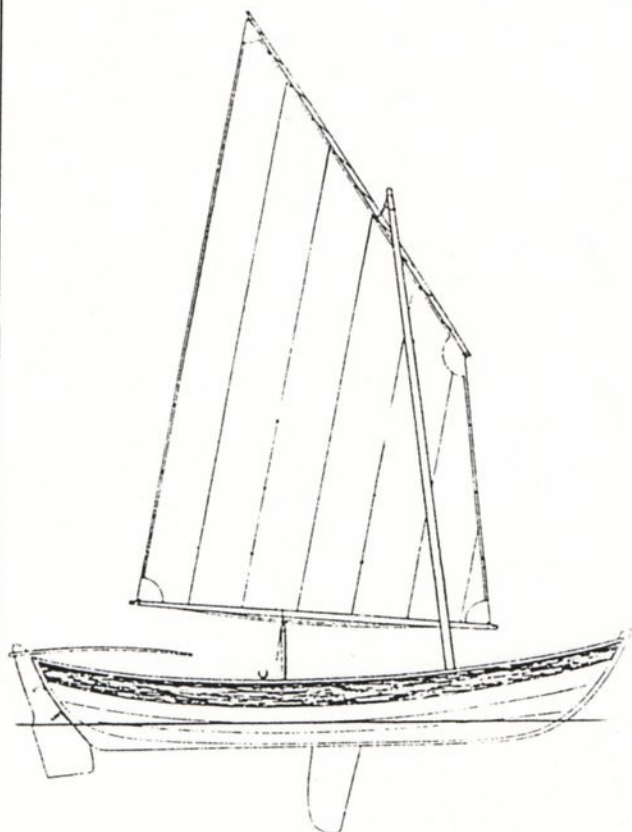
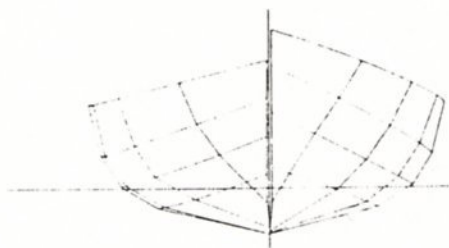
no. 48

LOA: 16' -6"  
5.0m

Beam: 5' -2"  
1.57m

Weight: 200lbs  
90kg

Sail area: 102sq ft  
9.48sqm



**Type:** double-ended beachboat   **Sailing rig:** balanced lug or gunter sloop   **Capacity:** 1 to 4, sometimes 5

## BUILDING INFORMATION

**Construction:** glued lap plywood – vee-bottom – clinker topsides

**Options:** none on construction. Open layout or with built-in buoyancy

**Building time:** 160 hours

## COST

**Materials:** £700. With sailing rig: £1140

**Professionally built:** £2875. With sailing rig: £4200

**Plans:** 5 sheets with instructions