



## PACIFIC SEACRAFT

Pacific Seacraft Corp.,  
3301 S. Susan Street,  
Santa Ana, CA 92704





# Designed to



PACIFIC SEACRAFT 25

## • BALLAST

Solid lead casting permanently bonded into fiberglass keel section with polyester resin, mat, and woven roving.

## • SAILING RIG

Mast and boom are 6061-T6 aluminum, anodized for corrosion resistance. Standing rigging is  $\frac{3}{16}$  dia. 1 x 19 stainless steel with swaged stainless steel end terminals and solid bronze open body turnbuckles with toggles. Running rigging is braided dacron. Sails are American made Bainbridge dacron, double stitched with two sets reef points. Jiffy reefing boom provided with blocks, lines and hardware. Stainless steel mast tabernacle, deck mounted.

## • STEERING

Molded fiberglass stern hung rudder with bronze gudgeons, pintles and fasteners. Ash rudder cheeks, and oak tiller.



The Pacific Seacraft 25 is destined to become one of America's most popular small cruising yachts.

Few boats in her size and price range are built to such scantlings. None are available with the same attention to detail and quality.

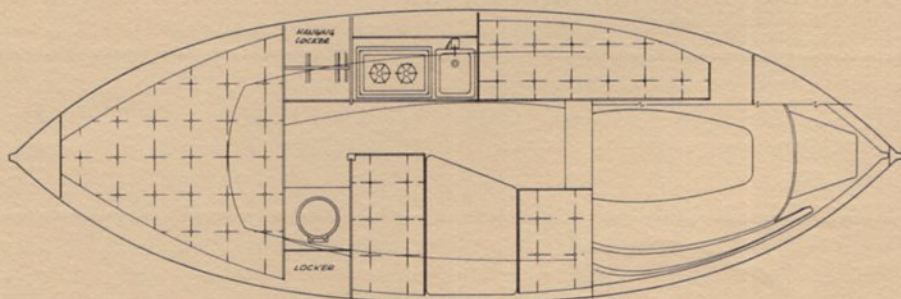
## • FIBERGLASS

All fiberglass parts are 100% hand laminated of the finest quality materials with an extra high glass/resin ratio maintained throughout. The hull lamination schedule is structured as follows:

1. 14-16 mills color isophthalic gel coat color layer.
2. 7-10 mills back-up gel coat.
3. 1½ ounce mat 24" wide at sheer
4. 7½ ounce cloth 24" wide at sheer
5. 3 ounce mat over entire hull
6. 7½ ounce cloth over entire hull
7. 3 ounce mat over entire hull
8. 24 ounce woven roving over entire hull
9. 3 ounce mat below water line
10. 24 ounce woven roving below water line. Hull thickness varies from  $\frac{3}{8}$  inch at the sheer, to  $\frac{5}{8}$  inch below water line.

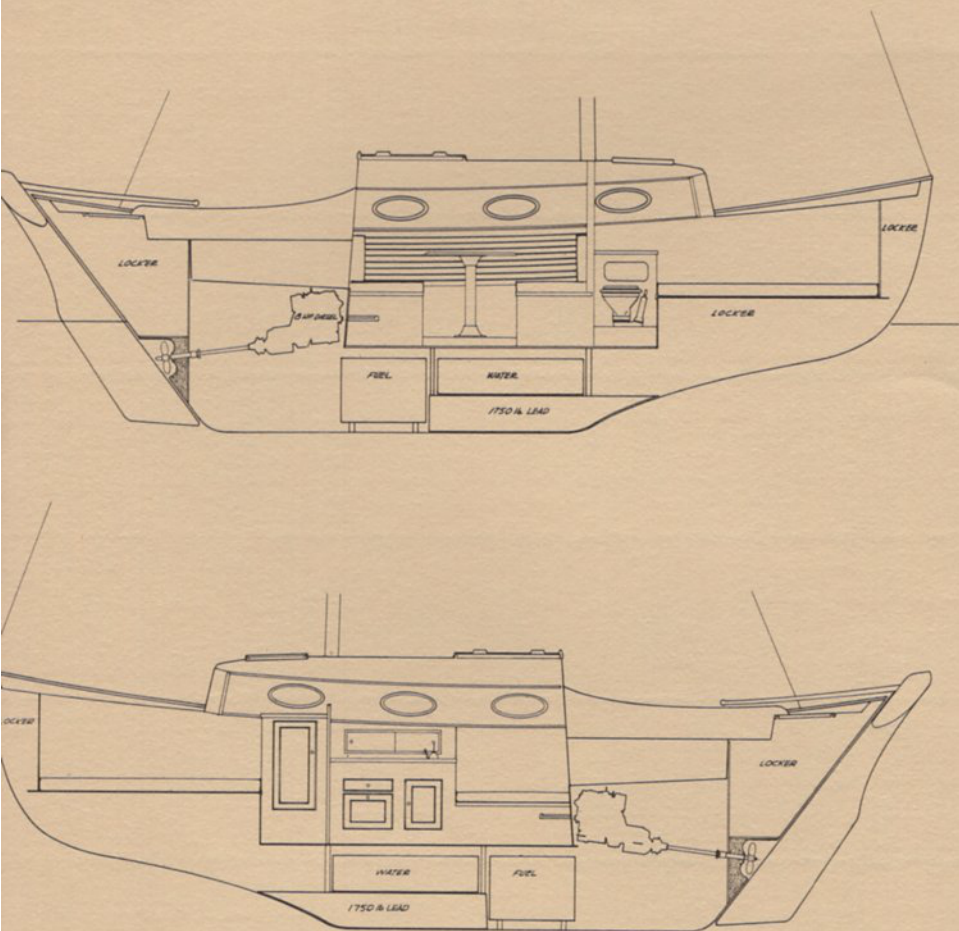
## PACIFIC SEACRAFT 25 SPECIFICATIONS

Length	24' 6"
Waterline	21' 0"
Beam	8' 0"
Displacement	4750 lb.
Ballast	1750 lb.
Draft	3' 3"
Main	110 sq. ft.
Working Jib	126 sq. ft.
Sail Area (Working)	236 sq. ft.





# Sail the Seas



## • PLUMBING

All thru-hull fittings below the water line are provided with bronze valves conforming to ASTM specification B-62 insuring trouble free performance in a sea water environment. All hoses are high quality neoprene or vinyl. Suction hoses are spiral reinforced. Potable water hoses are FDA approved. All hose connections are double clamped.

## • INTERIOR HARDWARE

All locker door catches are solid brass with spring loaded stainless-steel ball detents. Galley sink and stove are stainless steel.

## • EXTERIOR HARDWARE

Chain plates with full back-up plates, pulpits, stanchions and mast step are 300 series stainless steel. Cleats, winches, hinges, hasps, headstay fitting, gudgeons, pintles and thru-hull fittings are solid bronze.

## • FASTENERS

Silicon bronze used in all applications below the water line and with all bronze hardware. 18-8 stainless steel used for hull to deck connection, stainless steel deck hardware, chain plates and jointer work.

## • JOINTER WORK

Exterior: oiled scarf-joint teak cap rails, grab rails and trim, oak tiller, white ash rudder cheeks.

Interior: oiled teak throughout including interior planking and sides of trunk cabin.

All teak lumber is finest kiln dried furniture grade available.

Weldwood plastic resin glue used throughout.

## • TANKS

5086 aluminum, mounted in keel. All fittings fully accessible.

## • INBOARD ENGINE INSTALLATION

8 HP YANMAR DIESEL on flexible mounts for vibration isolation. Fiberglass drip pan mounted under engine. Stainless steel water-lift type muffler and wet exhaust system with bronze thru-hull fitting. Heavy duty Morse controls for throttle and shift with removable handles for sailing. Indicator lights for oil pressure, water temperature and alternator. 1" diameter aquamet alloy propeller shaft with bronze 2 bladed propeller and sacrificial zink anode. Electric start with handle provided for hand cranking. 35 amp alternator, engine mounted for battery changing. 20 gallon 5086 aluminum fuel tank. Engine is accessible from three sides for service. Cockpit sole is removable for major engine work.

## • ELECTRICAL SYSTEM

87 amp battery with marine terminals mounted in plastic battery box with built-in battery charger, circuit breaker panel with battery condition meter. Three position master battery switch, three chrome plated brass cabin lights, navigation lights including masthead anchor light. Second battery is optional.

## • WINDOWS

Six 11" x 6 1/2" oval ports with 1/4" BRONZE tempered glass lenses and solid teak frames bedded in silicone inside and out.

## • BILGE PUMP

Large capacity diaphragm type pump thru-cockpit mounted for easy access by helmsman or crew. Spiral reinforced vinyl hoses. Bronze thru-hull fitting for overboard discharge.

## • HATCHES

Main hatch, port cockpit seat hatch and lazarette hatch are molded fiberglass. (optional teak main hatch available.) Forward hatch has 5/8" thick smoked plexiglass door with gasket, scuppers, and four heavy duty latches for watertight integrity.



# From the Great Tradition of American Sailing Craft

The Pacific Seacraft 25 is a modern version of the famous "No Mans Land" boat which plied the rough, rich fishing waters at the south end of Cape Cod over 100 years ago. Along with the Block Island boats and the Cape Cod Cat boats, she possessed all the qualities which endeared her to the experienced seagoing fisherman of the north-eastern United States.

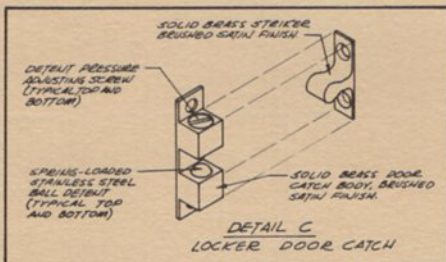
These sturdy, American designed and built double enders, were used to carry heavy loads of men and cargo; to sail fast to and from offshore fishing grounds in the worst of weather; to be easily beached and launched from the sandy shore.

## Important Characteristics of Small Cruising Yachts

The Pacific Seacraft 25 is built with an eye toward four important characteristics:

### 1. Seaworthiness.

The Pacific Seacraft 25 is built to take a wide range of conditions at sea with minimum effort on the part of her crew and maximum safety for all aboard.



### 2. Ease of Handling.

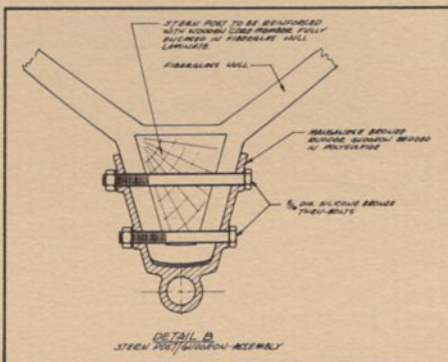
No matter what the conditions, she is easily handled by one man. Your Pacific Seacraft 25 will steer herself for long periods leaving you free to enjoy the sail or tend to other necessary chores.

### 3. Comfort.

A small cruising yacht capable of



long offshore passages must be comfortable in motion and in accommodation plan. The lines of your Pacific Seacraft 25 are ideal for a comfortable, easy motion. Her interior layout provides ample room to rest and relax or to enjoy the company of friends.



### 4. Speed, On and Off The Wind.

Many people seem to believe cruising craft have to be cumbersome and slow. Not so! The Pacific Seacraft 25 is a fast sailor on and off the wind. Her rig provides excellent speed in light airs and fast, stable sailing when the breeze freshens.

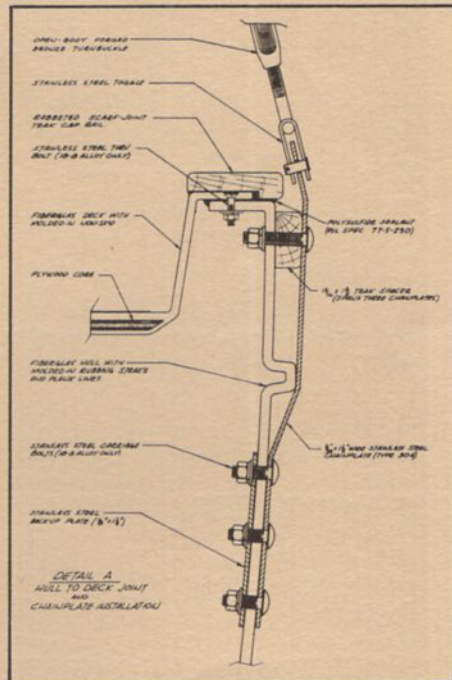
All of these classic design qualities have been developed in your Pacific Seacraft 25 with the addition of contemporary glass resin technology and the use of a modern rig and hardware.

The Pacific Seacraft 25 is the perfect small offshore family cruising boat. She may be trailered and is rigged with tabernacle mast so she need not be berthed in an expensive deep water slip. Her

accommodations sleep five, yet she is an excellent single-hander.

## Rugged American Construction for Safe Seagoing

The Pacific Seacraft 25 is built for years of safe, low maintenance voyaging. Her hull is 100% hand laminated in our west coast plant and has an extra-high glass to resin ratio. Hull thickness varies from  $\frac{3}{8}$  inch at the sheer to over  $\frac{5}{8}$  inch below the waterline. Hull lamination schedule has 10 layers of cloth, mat and woven roving. Resin is hand applied and squeegeed on each layer to assure greatest strength to weight ratio.



The all important deck to hull connection is engineered with a double sealed flange, through fastened with 18-8 stainless steel bolts and completely bedded in polysulphide (MIL SPEC - TT - S - 230) compound. It is the strongest, most water tight connection available in current technology.