

Passport 42

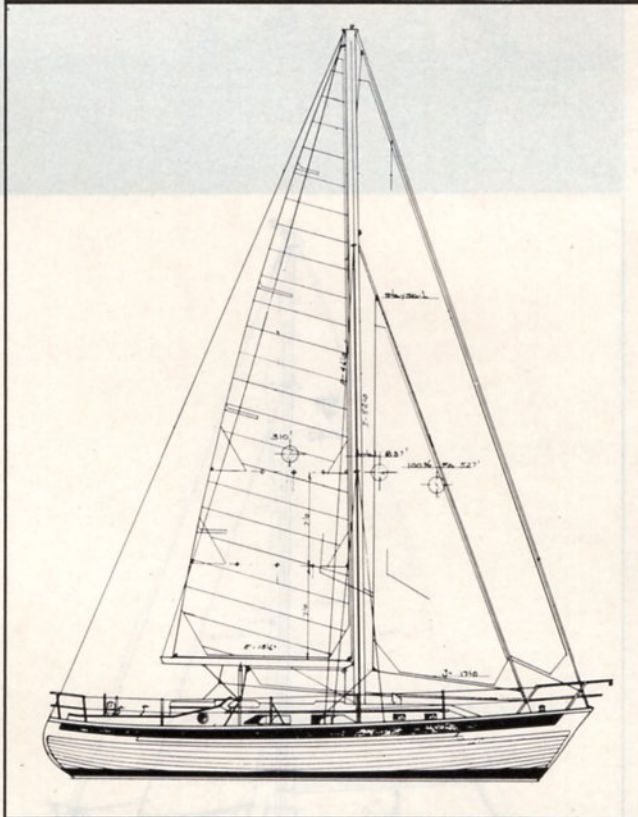
42'

The Passport 42 was designed by Stan Huntingford of Vancouver, British Columbia, famous for his well-founded cruising yachts. With lines that show a beautiful sailing hull, she has proven to be an ideal, fast, and comfortable cruising yacht. Readily handled by a couple with her easily managed cutter rig, she is also available in a pilothouse model. Again, Huntingford has outdone himself in producing a yacht of extreme responsiveness together with large interior volumes—a combination that makes an excellent world cruiser as well as liveaboard.

Our standard yachts come equipped with a number of items that are optional on other yachts, items such as self-tailing winches, Horizon sails, custom-rigging screens for opening ports, solid teak decks (there are no veneers anywhere on the yachts), anchor windlass, bronze-ball cock valves for through hulls that are fully bonded, and circulating cabin fans, to mention a few.

The forward stateroom features a large double berth that affords privacy and comfort to your guests. There are two large hanging lockers forward as well as lockers and shelves.

To port at the base of the companionway is the owner's stateroom. Awaiting you is a queen-size berth with drawers beneath for storage. Addi-



tional storage includes two closets, bookshelves, and lockers. Two opening ports and a hatch overhead provide ample sunlight and fresh air.

The compact U-shaped galley is designed for maximum efficiency and safety. There is a large combination refrigerator/freezer as well as an abundance of drawers, lockers, and dry-storage bin.

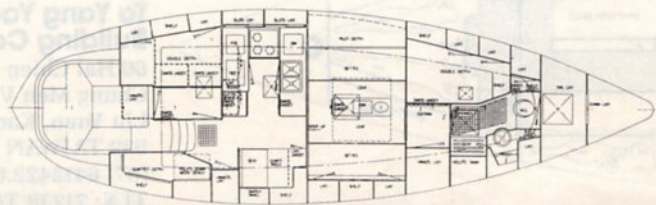
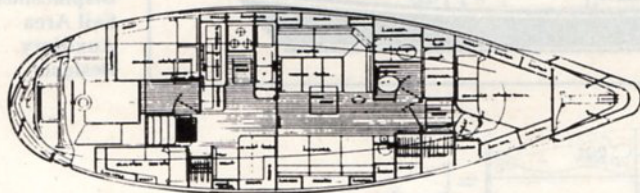
To starboard of the galley is the large and functional navigation station. The oversized chart table has ample room for chart storage. Above are shelves for books and navigation equipment.

The main saloon is open and airy. There are large bookshelves and lockers, as well as storage space below the settees. The L-shaped dinette features a fold-up table that provides excellent access. Alternately, a U-shaped settee is available.

The head features a one-piece molded fiberglass tub/shower. Large lockers provide plenty of space for towels, linens, and first-aid supplies.

The Passport 42 is a rugged offshore cruiser maximizing performance to provide for exciting weekend excursions.

L.O.A.	41' 9"
L.W.L.	34' 10"
Beam	12' 10"
Draft:	
Deep Keel	6' 4"
Shoal Keel	5' 10"
Ballast	9,500 lbs.
Displacement	25,500 lbs.
Sail Area	837 sq. ft.
Water Capacity	150 gal.
Fuel Capacity	120 gal.
Designer	Stan Huntingford



Passport Yachts East, Inc.

326 First St., Suite #14
Annapolis, MD 21403
(301) 263-0008

Passage Yachts

1220 Brickyard Cove Rd.
Point Richmond, CA 94801
(415) 236-2633

For More Information Circle No. 317