

PEARSON[®] 25

Sweet performance in a family cruiser/racer.

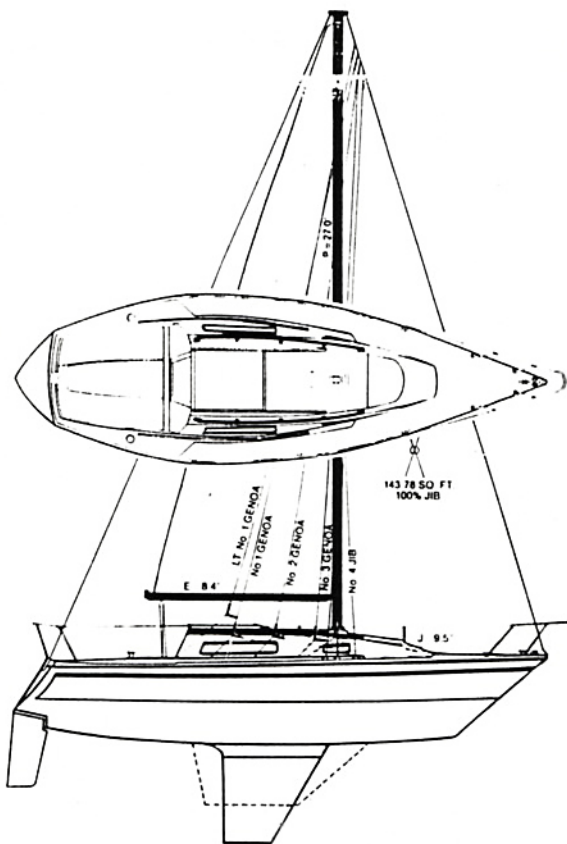
The P 25 is a roomy family cruiser which features sleeping accommodations for five, a fully enclosed head, an efficient galley and a convertible dinette.

Her modern underbody, tall rig, and long waterline make her an ideal boat for PHRF and club races. She's a well-balanced and able boat that you'll appreciate sailing, even if you never enter a race. And you can cruise shallow waters at will with her optional shoal draft keel.

Check her standard equipment list and you'll find she's outfitted with gear found only as optional on boats costing much more.

Specifications*

Length overall	25'0"	Bridge clearance	33'0"
Waterline length	21'5"	Sail area	257 S.F.
Beam	8'0"	I=	30.27'
Weight	3750 lbs	J=	9.5'
Ballast	1250 lbs	P=	27.0"
Draft deep keel	4'3"	E=	8.4'
Draft shoal keel	3'0"	*Approximate	



Standard Equipment

Hull & Deck

Hand laid-up fiberglass hull and deck; stainless steel or corrosion-resistant hardware; stainless steel fasteners; smoked plexiglass windows; opening foredeck hatch; translucent weather boards; opening ports; bow pulpit and stern rail with lifelines; inboard genoa track and cars; teak handrails; international running lights; self-bailing cockpit; primary winches; winch handle; mainsheet traveller; outboard motor bracket; fin keel and spade rudder; sail lockers; non-skid decks; aluminum gunwale trim with vinyl guard.

Rig

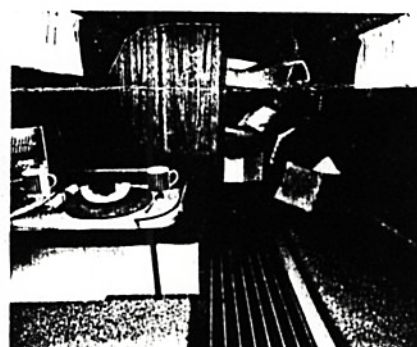
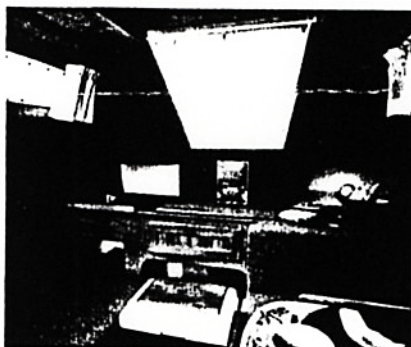
Deck-stepped, hinged aluminum mast and boom; mainsail and 110% working jib, outhaul; jiffy reefing; stainless standing rigging, Dacron[®] running rigging; stainless turnbuckles, halyard winches; double lower shrouds.

Cabin

V-berth forward; fully enclosed head with portable toilet with self-contained holding tank and deck discharge; hanging locker; dinette which converts to double berth; settee berth; galley with storage; stainless steel sink; water system with galley hand pump, and five gallon tank; alcohol stove and portable forty-quart ice chest; teak and holly cabin sole; curtains; cabin lights; battery; bonding system; switch panel; comfortable berth cushions; marine fabric hull and overhead lining.

Options

Shoal Keel
Shipping/Storage Cradle



Photographs may show optional equipment. Prices, specifications and equipment subject to change without notice.

*DuPont Registered Trademark