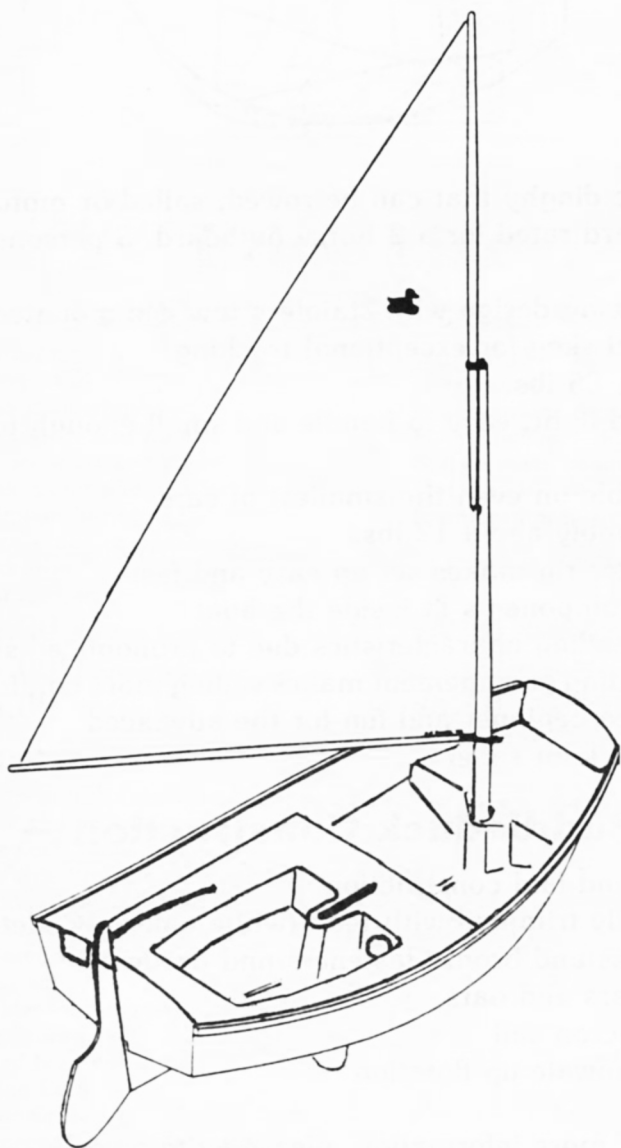


NEW ENGLAND SKIFF

BUILDERS

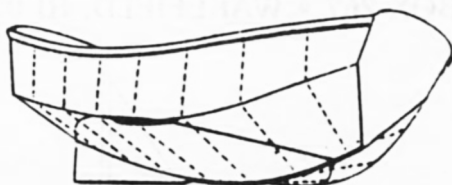
P.O. BOX 267 • WAKEFIELD, RI 02880



— PUDDLEDUCK —

A delightfully simple, versatile sailing dinghy.

— PUDDLEDUCK —



- A versatile dinghy that can be rowed, sailed or motored
- Coast Guard rated for a 2 horse outboard, 3 persons and 390 lbs.
- Proven towing design with stainless tow eye mounted low
- Substantial skeg for exceptional tracking
- Bare boat, 85 lbs.
- Strong and light, easy to handle and small enough to store on deck
- Car toppable on even the smallest of cars
- Mast assembly about 12 lbs.
- Fixed gunter rig makes set up easy and fast
- All mast components fit inside the boat
- Excellent sailing characteristics due to pronounced sheer
- Unique seating arrangement makes sailing more comfortable
- Safe for the beginner and fun for the advanced
- A proven 4 knot sailer

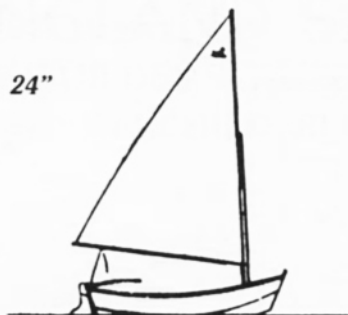
— Puddleduck Construction —

- Rugged hand laid construction
- Traditionally trimmed with teak (white oak on Cadet)
- All stainless and bronze fasteners and hardware
- Spruce spars and oars
- 3.9 oz. Dacron sail
- Positive gunwale up flotation

For more information, please write or call:
Jonathan and Nicole Nomer
NEW ENGLAND SKIFF BUILDERS INC.
P.O. Box 267, Wakefield, RI 02880
(401) 789-4609

Length, 8'
 Beam, 4'
 Sail Area, 36 ft.
 On deck boom clearance, 24"

Draft, board up 6"
 down 32"
 Weight 85 lbs.
 Rigged 120 lbs.



Price List

Standard Puddleduck:

White Hull
 Dacron sail
 Teak daggerboard
 Teak Tiller and Rudder
 Spruce mast and boom
 Teak motor pad
 Premium hardware
 Dry storage compartment
 Teak trim
 Storage bags

\$1795.00 Sailing Complete

\$1095.00 Convertible

\$995.00 Rowing

Puddleduck Cadet:

White Hull
 Dacron sail
 Polypropylene daggerboard
 Polypropylene rudder
 Spruce mast/boom
 Motor pad
 Premium hardware

\$1395.00 Sailing Complete

\$695.00 Convertible

\$595.00 Rowing

Options:

Optional hull colors (red, green, yellow, blue, black, custom)	+ 85.00
Oars and locks, 6' spruce	+ 65.00
Oar Lock Stops, Rubber	+ 10.00
Gunwale Protector (perimeter)	+ 115.00
Stainless Skeg Protector	+ 20.00
Forward Rowing Station	+ 15.00
Automatic Bailer (Sunfish style)	+ 35.00
Mast bag	+ 35.00
Rudder and daggerboard bag	+ 15.00
Dry Storage with access port	+ 20.00
Fitted boat cover	+ 85.00
Lifting Eyes	+ 35.00
Floor Grate	+ 175.00
Transom lettering (painted)	+ 85.00
Compass	+ 25.00
Snap Davits	+ 150.00
Boat Stand	+ 150.00
Foam gunwale blocks (four + line for cartopping)	+ 20.00