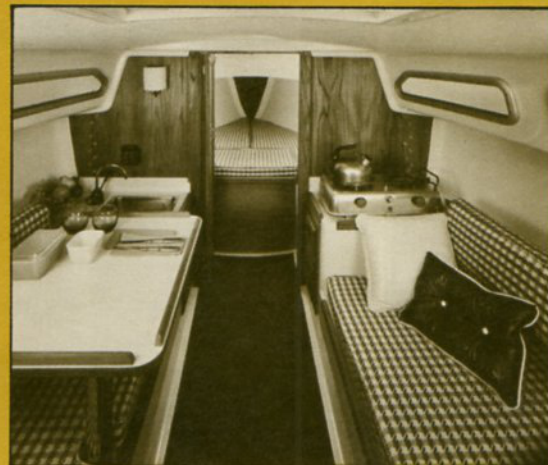


Ranger 23

NEW QUARTER TON RACER WITH BIG RANGER LUXURY.

Gary Mull's new Ranger 23 is the first U.S. boat designed especially for international Quarter-Ton Cup competition. Ranger 23's modern high-aspect-ratio sailplan and fine entry make her very close-winded and very fast. Her beamy moderate-displacement hull and high ballast-to-displacement ratio make her smooth and stable. Her rudder fairs into a skeg for greater control and increased lateral plane. And, with all that, she has an extremely favorable IOR rating of 18.



LUXURY BELOW.

Ranger 23 offers truly unusual spaciousness for a 23-footer. She sleeps four in real comfort. She's exquisitely finished in hand-oiled teak panelling with contrasting soft-textured vinyl or fabric cushions. She has color coordinated inset carpeting throughout. Standard features include a stainless steel sink, 25-pound icebox, bureau, hanging locker, 12-volt electrical system, and a new recirculating chemical head which exceeds all proposed anti-pollution standards. A forward hatch keeps her interior bright and well ventilated.

ROOMY COCKPIT, MODERN LAYOUT.

Ranger 23's big self-bailing cockpit seats the entire crew with proper back support and visibility for relaxed sailing. Standard features include a traveler track and mainsheet cam cleat. Underseat stowage is exceptional. Deck features include a natural teak cap rail and hand rails, optional dodger molding on the main hatch cover, racing winches and anodized hardware. Boot-top and contrasting non-skid finish are standard. The lightweight aluminum spars are made from specially designed oval sections, and the boom is equipped with internal outhaul and topping lift. Ranger 23 combines features and finish not found on most small yachts. Her high level of quality, in terms of overall construction and detail, is both obvious and unusual.

POWERFUL EASY-TO-HANDLE SAILPLAN.

The modern high-aspect-ratio sailplan, together with her advanced underbody, makes Ranger 23 a top performer on all points of sailing. The large foretriangle gives you a wide choice of headsails for varying conditions of wind and sea. Ranger 23 is exceptionally stable and easy to handle in heavy weather.

Built to big-yacht standards.

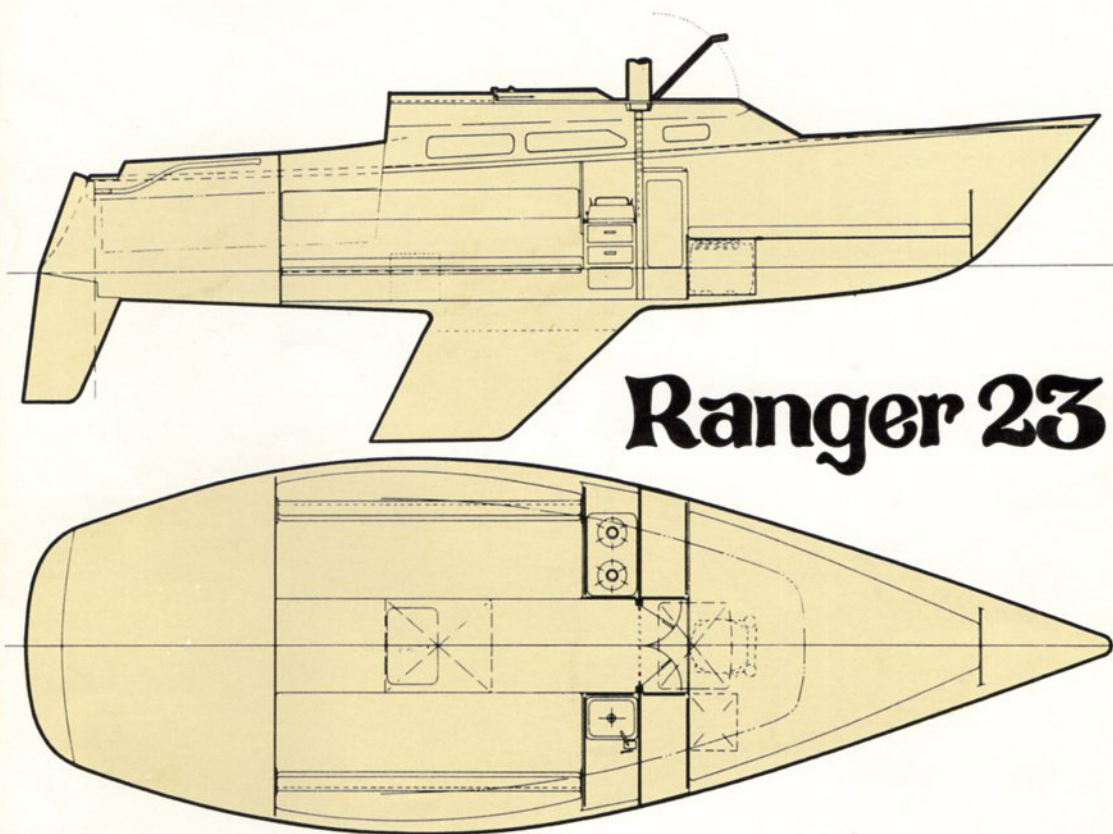
Ranger 23 is carefully built of fiberglass with laminations of woven roving, glass cloth and mat, all laid up by hand. The hull is painstakingly finished to perfection inside and out. All interior fiberglass is lined with an attractive foam-backed vinyl for soundproofing. Deck, cabin, and cockpit, like the

hull, are one-piece units with colors and non-skid surfaces molded in for maintenance-free life.

Ranger 23 is one of a complete line of sailing yachts designed by Gary Mull under exclusive contract to Ranger Yachts, a division of Bangor Punta Corporation.

Dimensions:

LOA	23' 0"
DWL	20' 0"
BEAM	7' 11"
DRAFT	3' 9"
DISPL (DWL)	3400 lbs.
SAIL AREA	257 sq. ft.
BALLAST	1500 lbs.



Ranger 23

Specifications:

HULL: one-piece reinforced fiberglass lamination. **DECK & COCKPIT:** integrally molded fiberglass lamination with additional deck stiffening. Colors and non-skid surfaces molded in. All exterior trim is natural teak. Self-bailing cockpit. 12-volt electrical system. Valves on all thru-hulls excluding cockpit drains. **BALLAST:** 1500 lb. lead. **RIGGING:** aluminum mast and

boom. All standing rigging, including turnbuckles and fittings, is stainless steel.

RUNNING RIGGING: dacron and stainless. **DECK**

HARDWARE: Merrinium bow chocks, genoa and traveler track. Two genoa winches. Custom tiller. **VENTILATION:**

2 opening hatches, 6 fixed aluminum frame windows. **GALLEY:** stainless sink,

formica counter tops, 10-gallon

water tank, water pump, ice chest, drawers and cupboard storage. Dinette table is standard. **BERTHS:** 4 decorator soft vinyl or optional fabric covered foam berths. **HEAD:** fully enclosed, exceeds all proposed anti-pollution standards. **INTERIOR TRIM:** hand oiled natural grain teak, inset carpeting and textured fabric or vinyl upholstery.

Ranger Yachts RRRR
A DIVISION OF BANGOR PUNTA OPERATIONS
3090 PULLMAN ST., COSTA MESA, CA. 92627