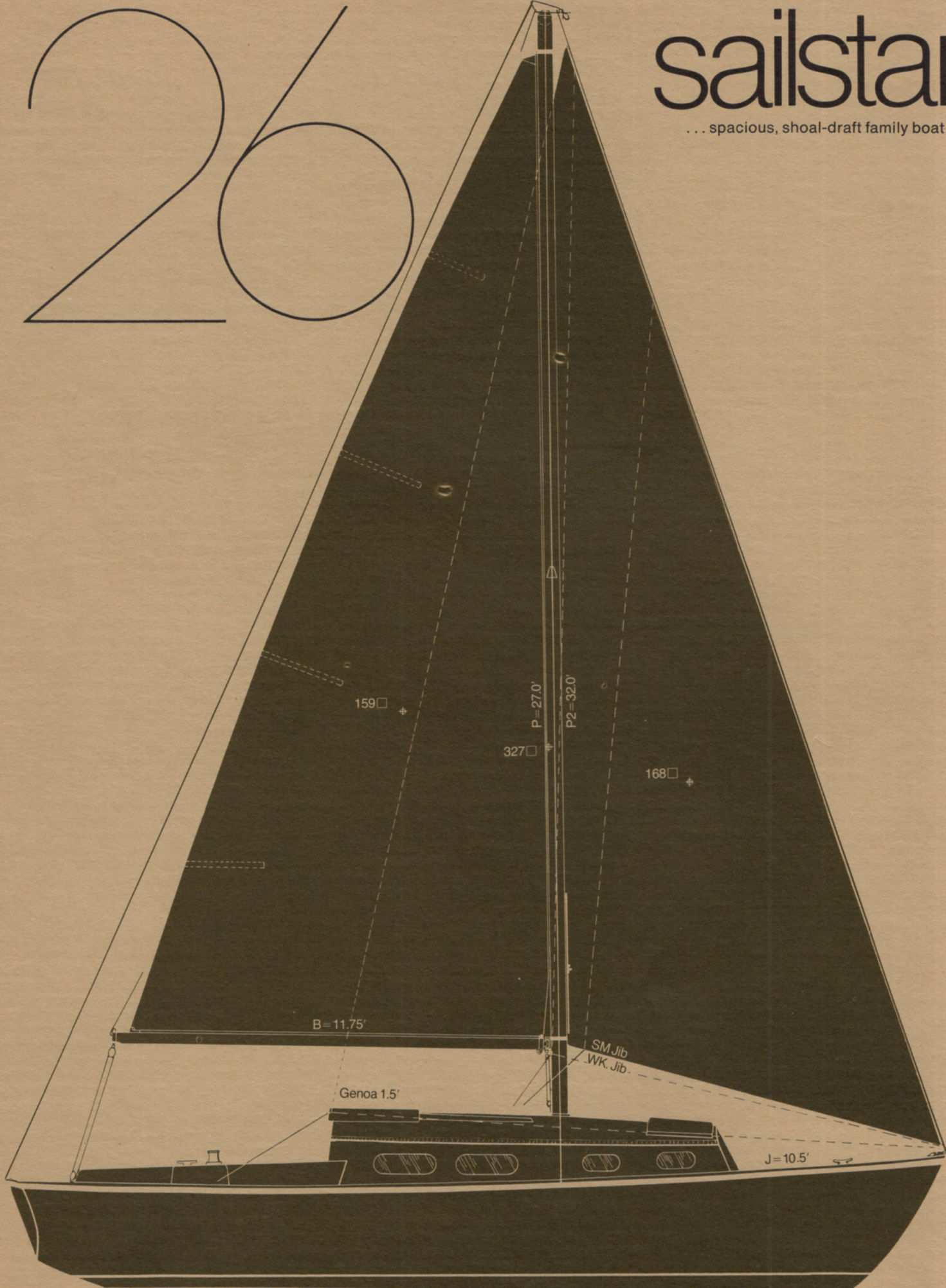


sailstar

... spacious, shoal-draft family boat!





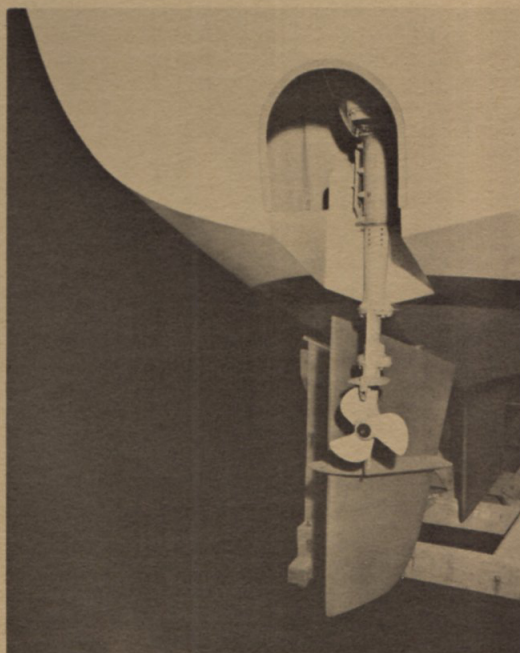
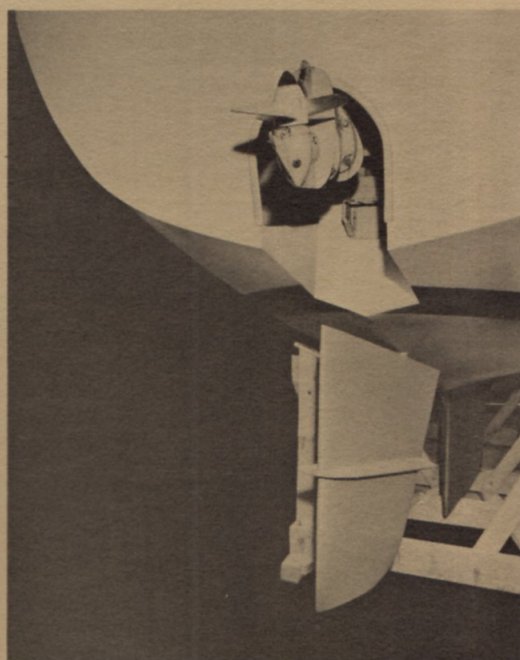
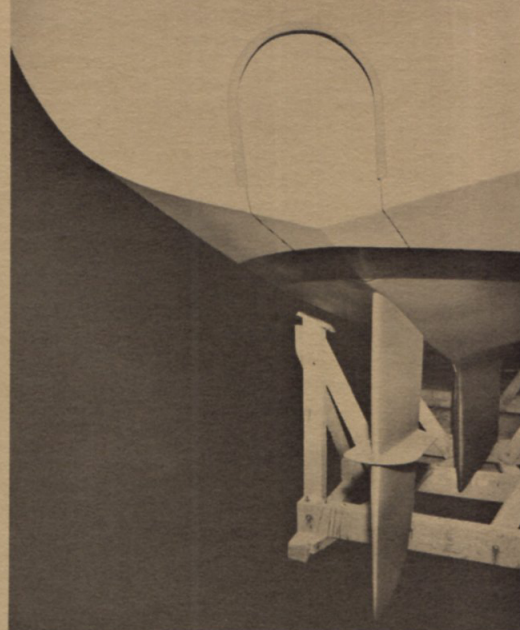
Cruising comfort! This is the space age and Halsey Herreshoff has made the Sailstar 26 synonymous with space. It is the only 26-foot boat on the market with a fully-enclosed head, dinette (optional), hanging locker, and sleeping accommodations for five. It offers full headroom below and an extra large cockpit. Compare her size-wise with boats up to thirty feet long. The magic word is "spaciousness." Another word is quality control . . . which includes tank testing.

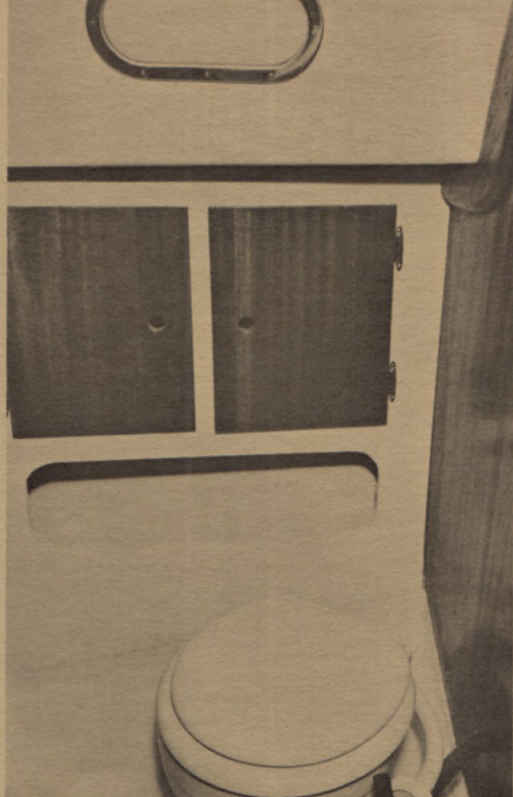
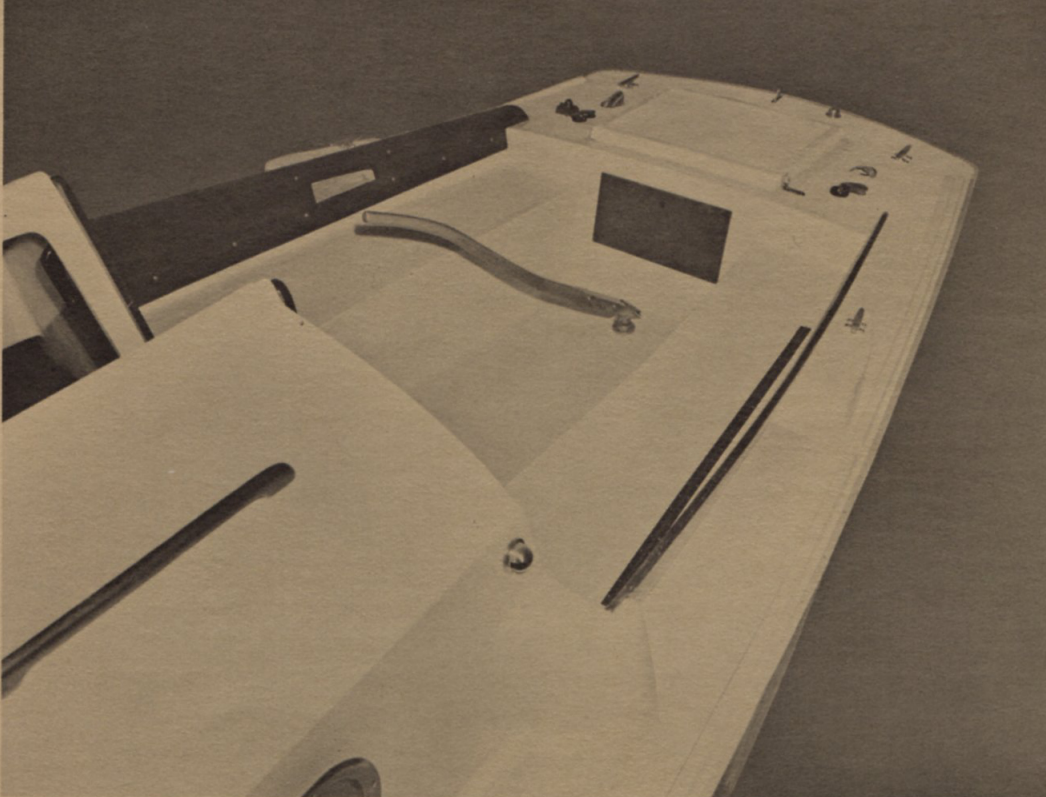
Easy to handle! Sailstar 26 is standard as a full-keel model. Also available as an option in keel-centerboard design for shoal draft advantages . . . ideal for exploring inland lakes or shallow bays. Her shallow draft also makes her trailerability an outstanding feature.

Quality bargain! Sailstar 26 is a lot of boat for the money. It is priced to put comfortable family cruising within the reach of those who want the pleasures of boating without the high costs usually associated with such spacious accommodations. The 26 gives you the performance and liveability of a Herreshoff design, the lasting value of quality Sailstar construction, and freedom to find new horizons of family fun. Try her on for size!

Sailstar 26 standard equipment

Hull & Deck: Molded high-impact fiber-glass reinforced polyester resin is entirely hand layup (no gun-chopped fibers) . . . and is largely woven roving, strongest material available. No fillers are used. Hull and deck thicknesses vary to suit structural demands. Deckhouse, deck and cockpit are molded in one piece. Deck is mechanically bonded and sealed to hull. Opening forward hatch (translucent) with molded (watertight) gasket receptacle. Full-width non-skid Dexoleum on deck and walkways. Painted boot on waterline. Vinyl anti-fouling bottom paint.





Cockpit: Exceptionally large – self-bailing with a hinged, scuppered, cockpit seat hatch over port sail locker. Non-skid Dexoleum on cockpit floor.

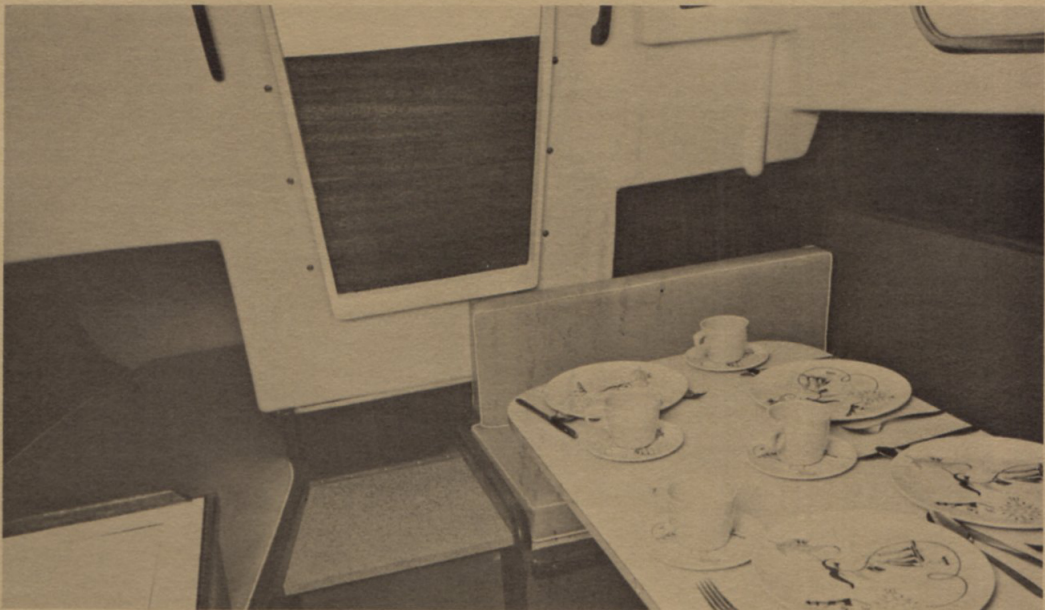
Motor well: Completely enclosed and includes a transom aperture that makes it possible to tilt the outboard motor and raise the lower unit out of the water. This enables you to eliminate most of the fouling and corrosion of the lower unit.

Deck Hardware: All hardware is satin finish chrome-plated bronze or high tensile alloys.

Interior: Exceptionally roomy layout . . . convertible dinette to two (2) 6'-2" long berths (optional). Two V-berths forward . . . 6'-2" long. Quarter berth. Five (5) mattresses of polyurethane foam, vinyl covers. Completely enclosed head with dependable Wilcox-Crittenden toilet. Galley includes Formica-covered counters . . . for stove, sink and icebox. Stainless steel sink with storage locker under. Galley counter. A molded fiberglass headliner is standard throughout. Icebox. Stainless steel water tank. Interior finish . . . satin finished mahogany bulkheads and trim.

Spars & Rigging: Standard rigging includes modern masthead rig with fully anodized mast and boom. Stainless wire shrouds. Chrome-plated turnbuckles. Running rigging is Samson (Dacron) yacht braid.

Optional Equipment: Long list of quality equipment permits outfitting this craft to custom standards.



Sailstar-26 Specifications

Models:	Dinette (Centerboard or Keel)
Designer:	Halsey C. Herreshoff
Builder:	Sailstar Boats
L-O-A	26'-0"
L-W-L	21'-10"
Beam	8'-0"
Draft	2'-10" (C.B. up) 3'-10" (keel)
Ballast	2200# (C.B.) 2400# (keel)
Displacement	5500# (C.B.) 5700# (keel)
Sleeping Capacity	5
Sail Area	327 Sq. ft.

Est. C.C.A.	23.0
Est. M.O.R.C.	20.3

