

SANTA CRUZ 50

L.O.A. 50'
 L.W.L. 46.5'
 BEAM 12'
 DRAFT 8'
 S.A. 1030 ϕ
 DISP. 15,000
 BAL. 7,500
 I.O.R. UNIMPORTANT

PRELIMINARY

DRWG. NO. 2

SCALE $\frac{1}{4}" = 1'-0"$

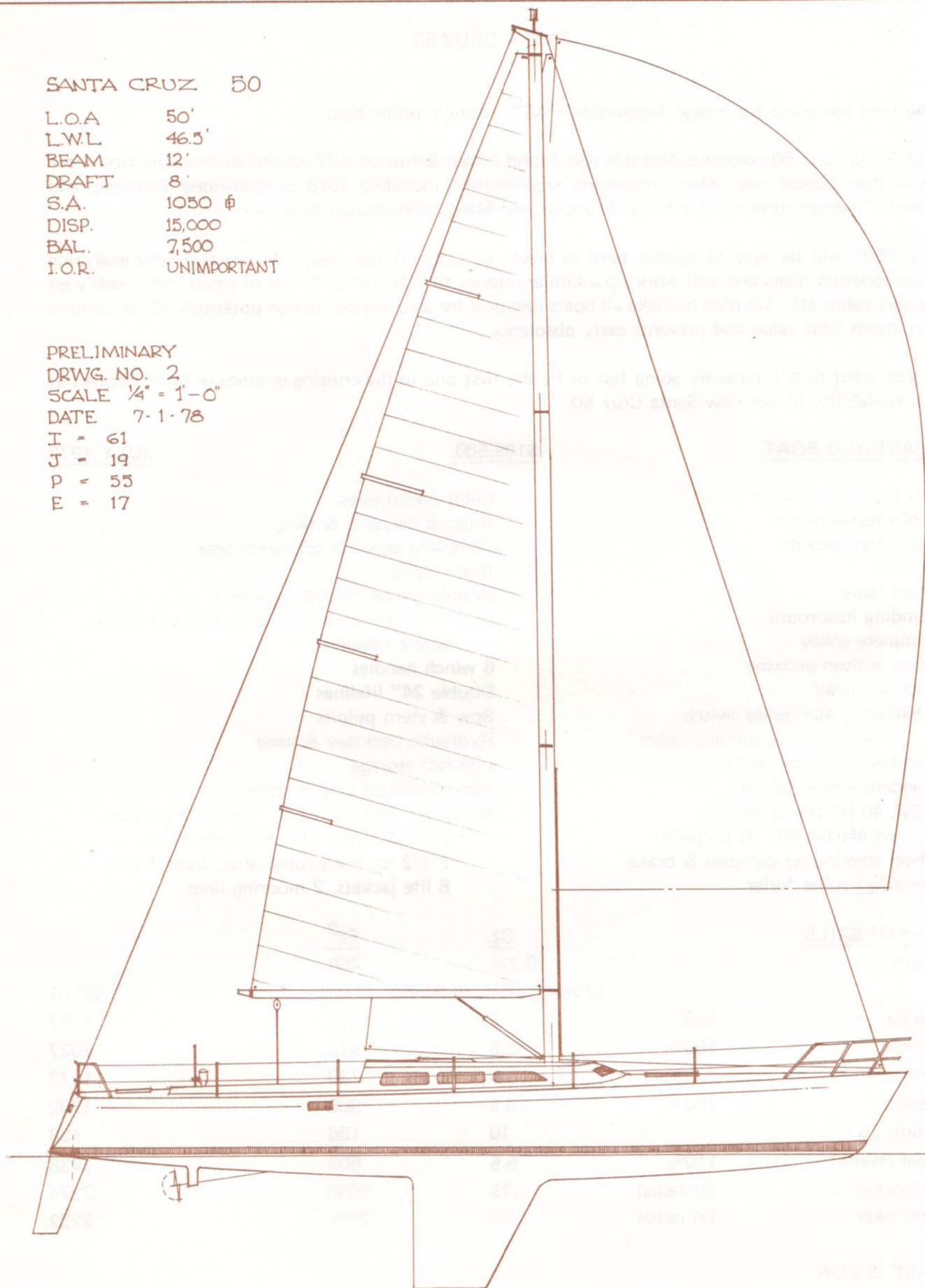
DATE 7-1-78

I = 61

J = 19

P = 53

E = 17



BILL LEE YACHTS INC., 3700 B HILLTOP RD. SOQUEL, CAL. 95073, (408) 475-9627

SANTA CRUZ 50

The time has come for a new, innovative, FAST, racing/cruising boat.

Our Santa Cruz 50 combines features also found in our Santa Cruz 27 which has probably won more races than almost any other production racer/cruiser, including 1978 Singlehanded Transpac, and "Merlin" which currently holds the Transpac and Manzanillo elapsed time records.

The "50" will be easy to handle, hard to break, go fast and look neat. We are currently analyzing accomodation plans and will work up a similar interior to "Merlin" with lots of wood and possibly an owners cabin aft. We plan to make all boats identical for a strong one design potential. Class racing is fun, holds boat value and prevents early obsolescence.

If you want to win races by going fast or be the first one to the cruising grounds or both, contact us for availability of our new Santa Cruz 50.

STANDARD BOAT

\$109,500.

JULY 1978

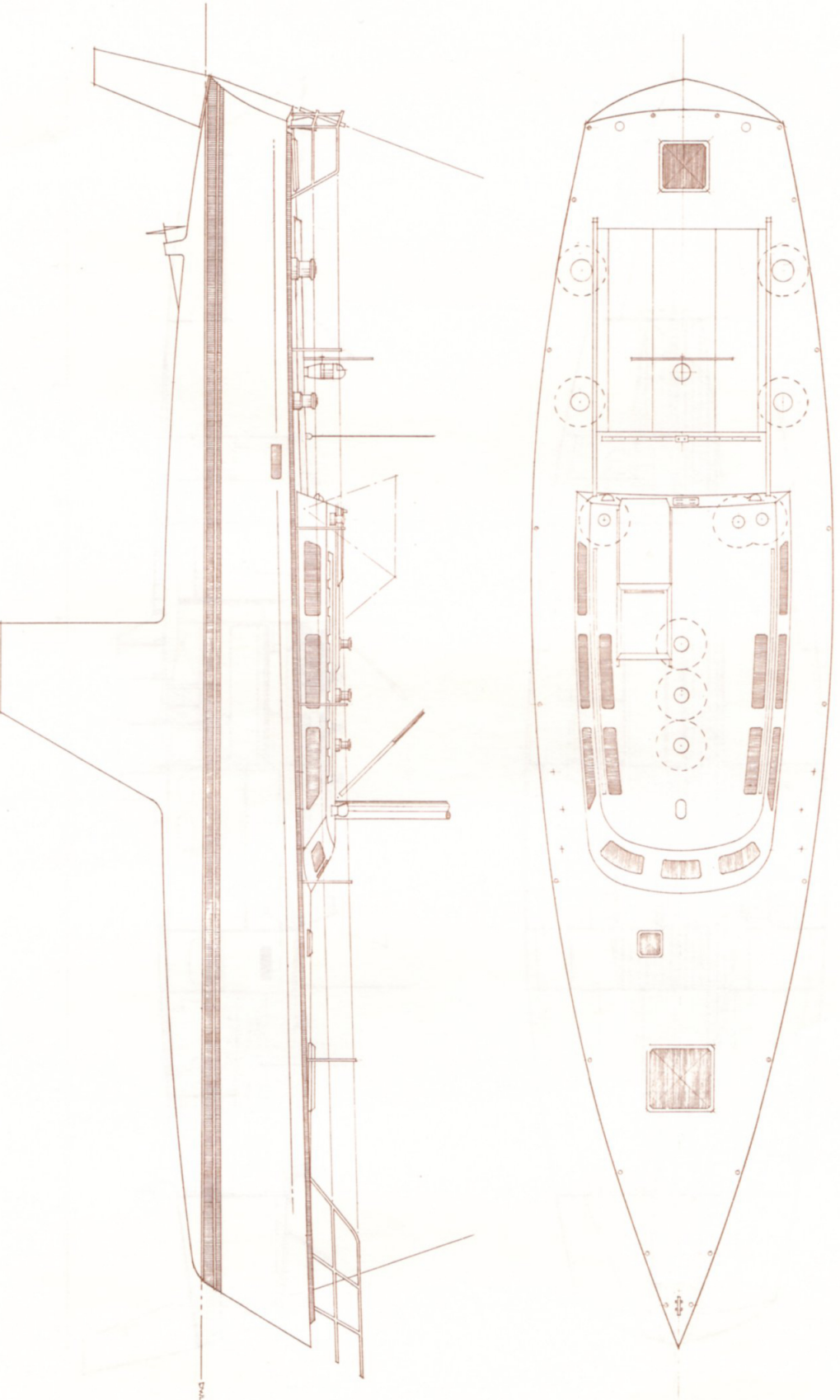
| | |
|---|--|
| Self draining cockpit | Color coded lines |
| Cabin top windows | Internal halyards & tangs |
| Teak floor boards | Complete genoa & spinnaker gear |
| Dinette | Rod rigging |
| Chart table | Double groove headstay system |
| Standing headroom | Barient winches: adequate in size, self-tailing where required |
| Complete galley | 6 winch handles |
| Stove w/oven-propane | Double 24" lifelines |
| Enclosed head | Bow & stern pulpits |
| 2 batteries, Marinetics switch panel, cabin & running lights | Hydraulic backstay & vang |
| Standard light tan decks | Life raft storage |
| Standard white topsides | Man overboard pole & tube |
| 4 Cyl. 40 HP Diesel inboard w/ Martec MK III propeller | Minimum equipment list: Danforth anchor, 20' 3/8 chain, 150' 5/8 nylon line, 2 1/2 lb. fire extinguisher, freon horn, 8 life jackets, 2 mooring lines |
| Wheel steering w/ compass & brake | |
| Dyna furl roller furler | |

NORTH SAILS

| | | <u>Oz.</u> | <u>Ft²</u> | |
|---------------|------------|-----------------------------|-----------------------|--------|
| Mainsail | | 9 1/4 | 468 | |
| | | (2 reefs, shelf, flattener) | | \$2116 |
| Genoa | 150% | 3 | 912 | 1787 |
| Genoa | 150% | 5.5 | 912 | 2027 |
| Genoa | 120% | 8.5 | 730 | 1972 |
| Genoa | 100% | 8.5 | 608 | 1702 |
| Storm jib | | 10 | 186 | 558 |
| Dual staysail | 110% | 5.5 | 605 | 1438 |
| Spinnaker | Tri radial | .75 | 2086 | 2274 |
| Spinnaker | Tri radial | 1.5 | 2086 | 2232 |

FAST IS FUN

SANTA CRUZ 50



BILL LEE YACHTS INC., 5700B HILTOP RD. SOQUEL, CAL. 95073 (408) 475-9627

PLAN OF CROSS SECTION

