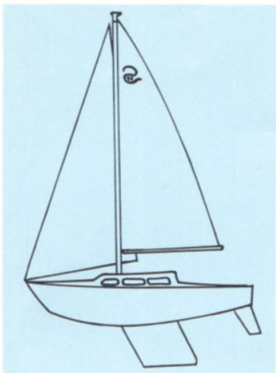




BOAT BUILDERS  
**W.D. Schock co.**

3502 S. Greenville St., Santa Ana, California • Kimberly 9-2277





### SANTANA 27

The SANTANA 27 (a one piece fiberglass hull and deck) was designed by Gary Mull as a cruising-racing sailboat. SANTANA 27 has been given a fine forebody for going to windward, with enough flair to keep the spray down. The fine entrance develops into a stiff midsection with a good beam aft to give high stability.

The keel and rudder have been designed, using modern tank test data, to have a low wetted surface and high lift/low drag for going-to-weather ability.

The spade rudder is placed well aft for positive control under all conditions. The cast iron keel may be shipped unattached from the hull to lower freight costs. It can be easily installed to hull because of a recessed area on the hull for low drag. This receives the keel flange which is faired beautifully into the hull.

SANTANA 27's high cambered deck gives standing headroom below without sacrificing her pleasing profile, and also makes it easy to work on the foredeck. Windage is cut down considerably by her normal sheer and low cabin top.

The cockpit seats are recessed from deck level. The teak coamings make the cockpit unusually safe and provide a comfortable backrest. The self-bailing cockpit will accommodate a large sailing party or racing crew.

The fiberglass winch pedestals raise the jib winches to the proper height and angle, so the crew may easily handle the sheets. Inside the pedestals is storage space for winch cranks, tools and other gear.

The main sail is easily trimmed with the aid of an adjustable traveler slide on a 4' traveler track. The 8' long genoa tracks allow proper adjustment and trim of all headsails.

SANTANA 27's bright, spacious interior with warm satin-finished mahogany has the accommodations of many larger boats. SANTANA is available in either a five or six berth arrangement. The optional dinette table converts into a double bunk to give a sixth berth. The galley cabinet with drawers and storage lockers is located in the main cabin conveniently across from the dinette. The cabinet with optional sink, pump, drain, gimballed alcohol stove and ice box make for a convenient compact galley. The head compartment is enclosed by two sliding doors with spacious hanging locker, optional pullman sink, pump and drain. The forward cabin sleeps two and includes a large storage area under the bunks. The quarter berths are unusually large with access hatches to storage area under bunks.

The cabin is well lighted by six ports, a large fiberglass main hatch and forward hatch. Optional Dorade ventilators on cabin top, as well as a ventilator on forward deck, will give added ventilation to the main cabin.

Outboards up to 10 HP may be mounted on the transom. Outboard and gas tank storage in lazarette is separated by a bulkhead to keep fumes from entering main cabin.

The masthead sloop rig completes the picture allowing a small mainsail and jib for leisurely cruising and daysailing, but the large foretriangle will accommodate big genoas and spinnakers for racing. The mast and boom are light weight aluminum alloy. The stainless steel shrouds have a narrow base, so that the headsails may be trimmed in efficiently for higher pointing ability. Standing rigging is all stainless steel with stainless steel turnbuckles and swaged fittings. Running rigging is all dacron. Standard deck hardware consists of jib fairlead blocks, mainsheet cleat, fore and aft mooring cleats and chocks.

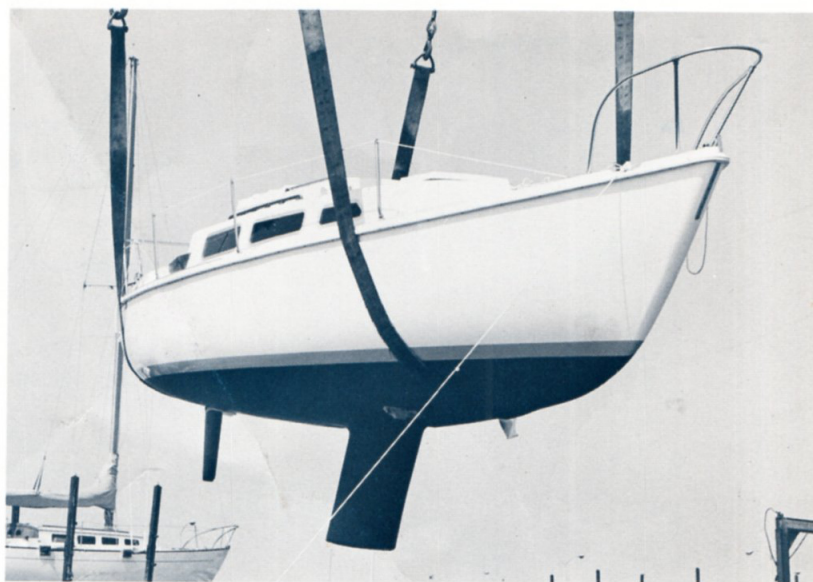
We know that the SANTANA 27 will have as fine a racing record as the other boats we have built.

#### SPECIFICATIONS:

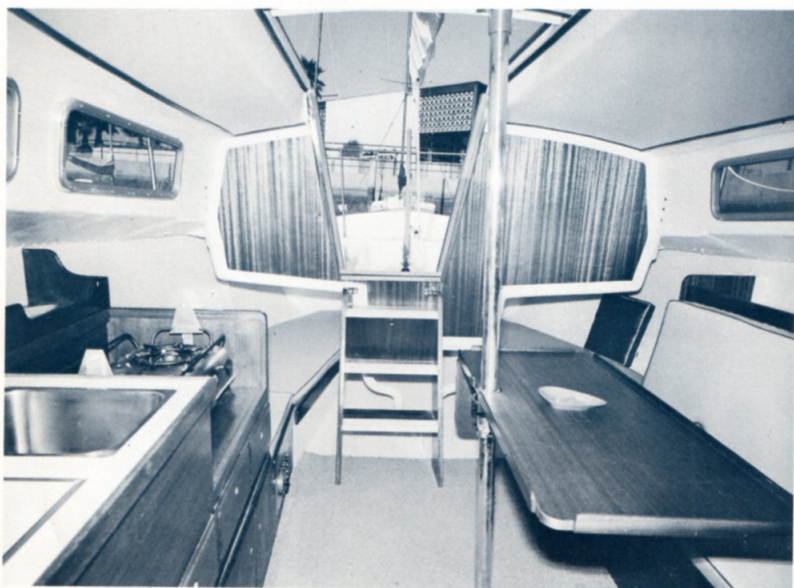
Length Overall .....	27' 1/2"
Length of Waterline .....	22' 6"
Beam .....	9' 0"
Draft .....	4' 3"

Total Displacement .....	5000 lbs.
Ballast .....	2300 lbs.
Sail Area .....	348 sq. ft.
Estimated C.C.A. Rating .....	25.5



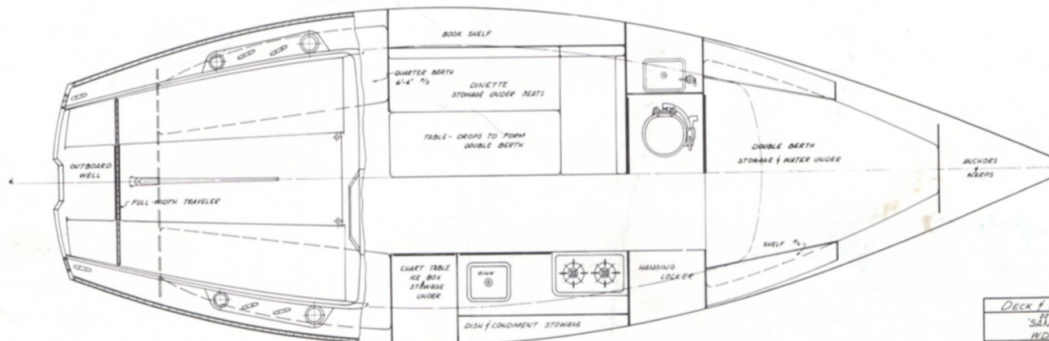


**LOOKING AFT**

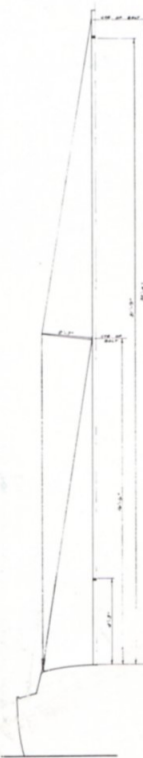
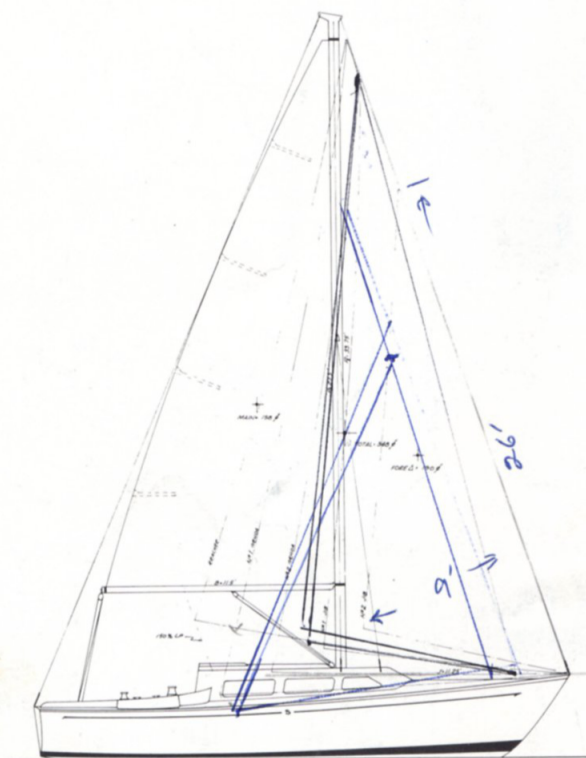


**LOOKING FORWARD**





DECK # ARRANGEMENT PLAN	
22'-6" DIAL 3:00PM	
'SANTANA 27'	
WD SMOCK CO	
DESIGNED BY:	
GARY W. MULL	NAVAL ARCH.
6671 RICHMOND DR	OAKLAND, CALIF.
11 JAN 1967	Scale: 1"=1'-0"
DRN. 100 257	BY: 'D'



SAIL PLAN	
20' x 6" DRUG JUNK	
"SANTANA 27"	
FOR	
W.D. SCHUCK CO.	
DESIGNED BY:	
GARY H. MULL NAYAL BECK	
2471 MUNN DR. OAKLAND CALIF.	
10 JAN 1967	SCALE: 3/4" = 1'-0"
Drawn by J.D. BT	Rev. 0

**W. D. Schock Co.** BOAT BUILDERS

3502 S. Greenville St., Santa Ana, California • Kimberly 9-2277