

SEAWARD

FOX

SPECIFICATIONS

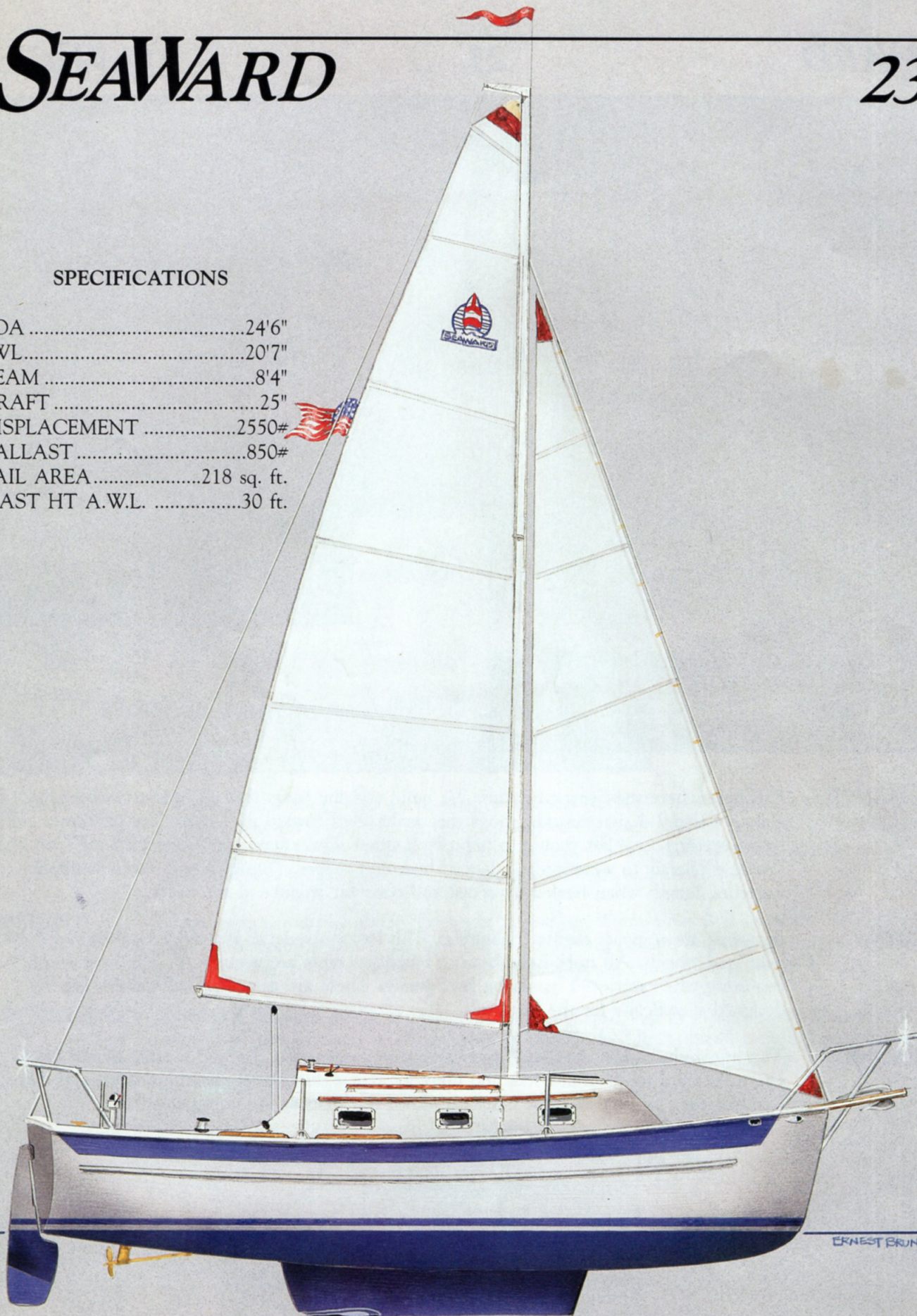
LOA19'9"
LWL.....14'10"
BEAM8'0"
DRAFT19"
BALLAST450#
SAIL AREA.....170
MAST HT25' AWL
DISPLACEMENT1300#



ERNEST BRUNDAGE '91

SPECIFICATIONS

LOA24'6"
LWL.....20'7"
BEAM8'4"
DRAFT25"
DISPLACEMENT2550#
BALLAST850#
SAIL AREA.....218 sq. ft.
MAST HT A.W.L.30 ft.



ERNEST BRUNOGE '91

SPECIFICATIONS

LOA26'9"
LWL.....22'2"
BEAM8'3"
DRAFT25"
DISPLACEMENT3200#
BALLAST1100#
SAIL AREA.....265 sq. ft.
MAST HT A.W.L.32'6"





PERFORMANCE

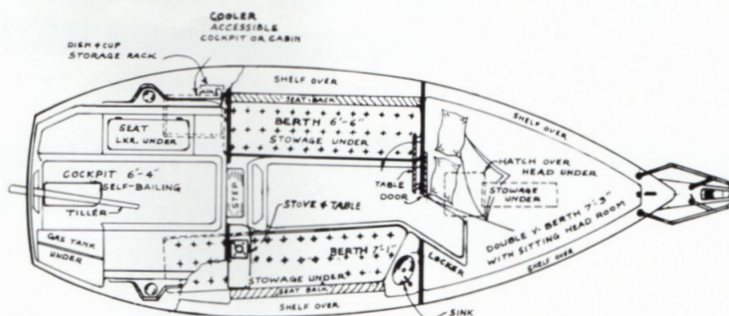
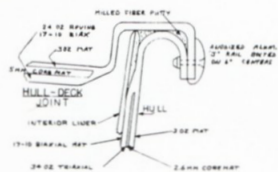
It is here where the Seaward excels. We build cruising boats that do not sacrifice performance. Careful design considerations that make the Seaward an outstanding performer are...a long waterline...NASA profile to improve laminar flow...maximum beam 65% AFT for chop slicing efficiency to windward...balanced hydrofoil rudder...Tumblehome sterns maintain waterline length when heeled for speed and constant balance at the helm.

TRAILERING

Seawards are compact family trailerables. The factory trailer is hot-dipped galvanized frame, axle, and wheels. All hubs have bearing buddies. Lights are waterproof. The boat is self centering when retrieved by strong keel guides. These are not universal trailers, but are designed specifically for the Seawards.

MAINTAINABLE

The integrally molded structural interior lining forming the top and bottom of the cabins eliminate hard to clean crevices and porous surfaces that absorb moisture, odor, and dirt. Remove the cushions and one can hose down the interior for spring cleaning!





QUALITY

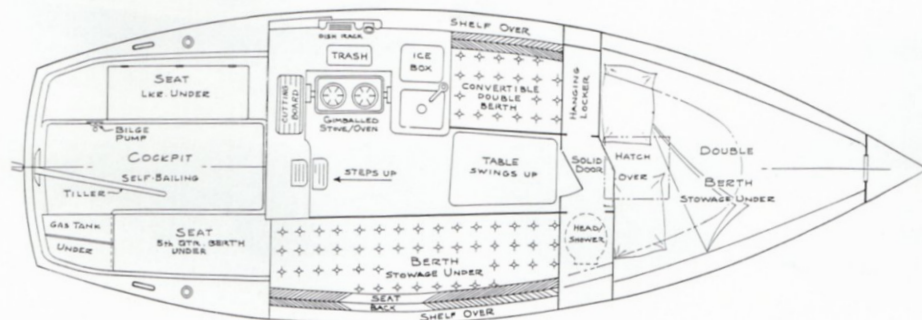
Opening ports are custom yacht quality stainless steel. (4) Bolt Mooring cleats, Hawse pipes, all railings, deck fill pipes, and all running hardware is yacht quality stainless steel. The unique deck joint is chemically bonded and thru-bolted. Construction is totally synthetic for longevity. Seawards have solid composite shoal wing keels with lead ballast.

DESIGN

What do you want to do on the water? Good question. What is it worth to have a comfortable cockpit, a foredeck that you can walk, sit, or lie on, private fore and aft cabins with abundant opening ports for cross ventilation and light, pleasant enough to sit in while sailing?

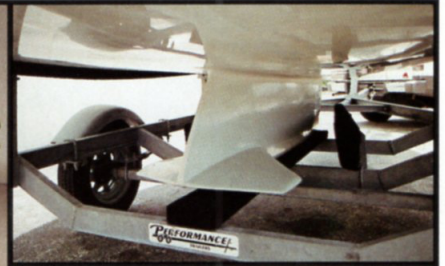
DISTINCTION

Owning a Seaward is like having a custom built yacht...they are not mass produced; in fact, no more than two of each model are built in one week. The Seaward time-honored traditional appearance, quality projected image, and incredible performance make her a distinct sailboat with assured pride of ownership.



SEAWARD

FOX



ACCOMMODATIONS

Large cabin – visually open and spacious – functionally practical with quarterberths, extendible 38" wide forward berth, sink, cooking and table facilities, head, 8 storage compartments plus anchor locker.

SAFETY

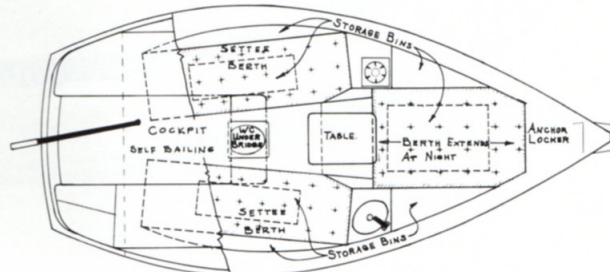
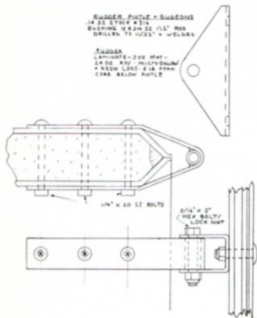
The Seaward Fox is underlined with high density closed cell foam floatation.

BIG BOAT FEEL

Because of her 8' beam, she feels like she is nailed to the dock when you step aboard. This characteristic is appreciated when holding the boat down from the seats in a breeze at sea. Passengers sit deep in the cockpit. This creates the secure feeling of being "in" rather than "on" the boat.

HANDLING

Her fine entry eats chop like "Pacman". The powerful fully battened main sail and good underwater hull lines allow the "Fox" to perform equally well in ghost air conditions. Never is more than one finger needed to control her highly balanced helm. The self tacking jib is a single handed operator's dream come true.



STARBOARD YACHT CO. • 4550 S.E. HAMPTON • STUART, FL 34997 • 407-286-7170

SPECIFICATIONS SUBJECT TO CHANGE WITHOUT NOTICE