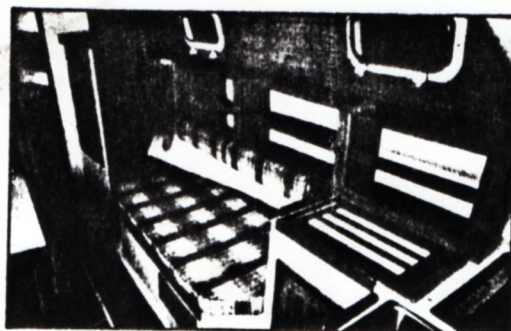
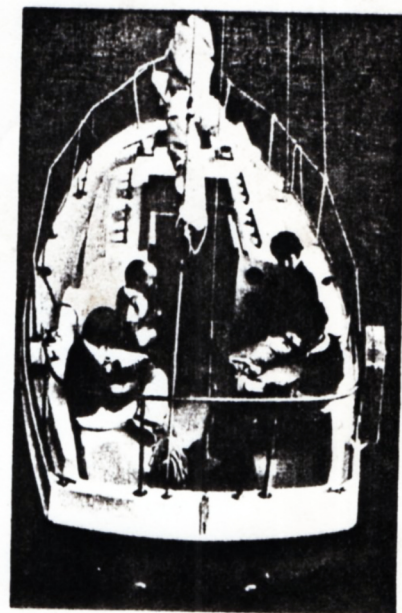
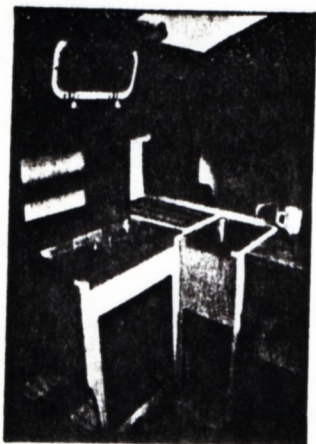
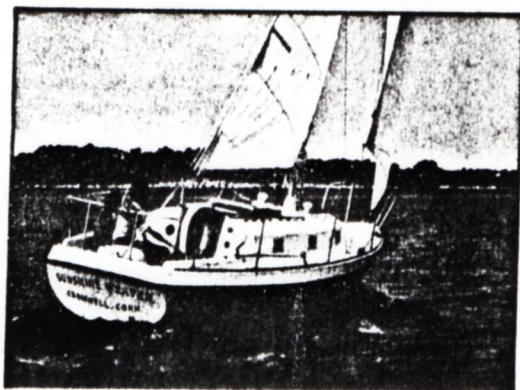




TARTAN 27



laminate. Joiner work is all Burma teak, siled and rubbed. Cabin sole is ribbon-stripe Mozambique. Handrails in main cabin are teak.

Ventilation: Two deck Dorade boxes with 3" cowls. Six opening 5"x12" ports in house sides. 19"x19" acrylic, opening forward hatch. 32"x22" acrylic companionway hatch.

MECHANICAL & ELECTRICAL

Power: 12 Hp. Farymann A-30-M diesel, noted for safety and reliability, is standard; 2:1 reduction, flexible coupling and stainless steel shaft; 2-blade 13"-diameter bronze propeller. Water lift type exhaust system. 19 gallon BIA-approved aluminum fuel tank fills from deck, vents overboard. Engine incorporates cold-weather starting aid and can easily be hand cranked if battery is depleted. Special system eliminates need for fresh water cooling. Insulated engine box with easy and excellent access for service. Gear shift and throttle controls are cockpit mounted. Ammeter and over-temp warning provided in key-start panel.

Electrical: Engine-mounted 35 ampere alternator charges 95 ampere-hour battery, 12 volt, secured in plastic box. Provision for second, optional

battery and vapor-proof transfer switch. 5-place, fused switch panel distributes current to the 7 interior lights, complete navigation lights, steaming light and compass light. All shrouds and stays are lightening-grounded to keel and engine. Navigation lights include individual port and starboard running lights, recessed in hull, and stern light on taffrail.

Plumbing: 30 gallon polyethylene tank supplies fresh water to galley sink via convenient foot-operated pump. Tank fills from deck, vents below. Toilet is fitted with an approved "No Discharge" holding tank, 13 gallon capacity, with deck pump-out fitting. Optional recirculating holding tank to increase usages between pump-outs.

SPARS & RIGGING

Mast: 6061-T6 aluminum alloy, 6"x4" elliptical section with integral $\frac{3}{4}$ " sail track; stepped through deck to alloy mast step. 4-sheave masthead with spinnaker halyard bale. Tangs are stainless steel, double-plate type, receiving marine eyes on 1x19 stainless steel standing rigging. Aluminum airfoil tapered spreaders internally retain upper shroud. Forged bronze turnbuckles, chrome plated, for backstay and shrouds; like plates at headstay. Masthead flag halyard provided.

Boom: 6061-T6 aluminum section with internal sail track and internal outhaul (4:1 tackles). Boom is set up for jiffy reefing with tack hooks at inboard end, cheek block outboard end. Both mast and boom are clear anodized finish.

Hardware: Two Lewmar #16 two-speed geared genoa winches. 6' hard anodized genoa track with car and snatch block port and starboard. 4:1 main sheet block with built-in cam cleat on roller-bearing traveller with adjustable stops. Two Lewmar #8 chrome halyard winches mounted on spar. Two lock-in aluminum winch handles. All sheets are braided Dacron®; genoa halyard wire with spliced rope tail; pre-stretched Dacron® main halyard.

MISCELLANEOUS

Much other detail and equipment is supplied with a Tartan 27. Among them are laminated tiller, halyard and sheet cleats, 4" (apparent) compass for bulkhead mounting, 13-pound Danforth anchor with 25 fathoms of anchor rode, manual bilge pump (installed in cockpit), two fire extinguishers, fog horn, brass bell and 4 Coast Guard approved life jackets. This brochure may show optional equipment as well as private owner's personal belongings.

SPECIFICATIONS

L.O.A.	27'0"
D.W.L.*	21'5"
Beam	8'7½"
Draft*	board up 3'2"
	board down 6'4"
Ballast	2,400 lbs.
Displacement*	7,400 lbs.
Sail area—mainsail	205.9 sq. ft.
	foretriangle 170.3 sq. ft.
	total 376.2 sq. ft.
Berths	4
Design	Sparkman & Stephens

*measured at datum waterline; actual weight and associated draft will vary.

