

**VIOLA**  
SHARPIE  
25' X 7'  
2500 POUNDS EMPTY

Viola is a fairly large cabin sharpie that uses very conventional glue and nail plywood construction but needs no lofting or building rigs. She is self-righting and self-bailing. I believe any boy could launch and rig her solo in an hour, although practice counts for a lot in operating a boat this large. Actually, when boats get over about 16 feet long, you may not be able to handle them by brute strength in some conditions and you must outsmart them with planning.

Viola has a nice cabin for two plus a utility room behind it. There is a 6-1/2' raised cockpit with easily accessible storage under and behind the cockpit. There's a slop well in the bow and another in the stern which takes a motor.

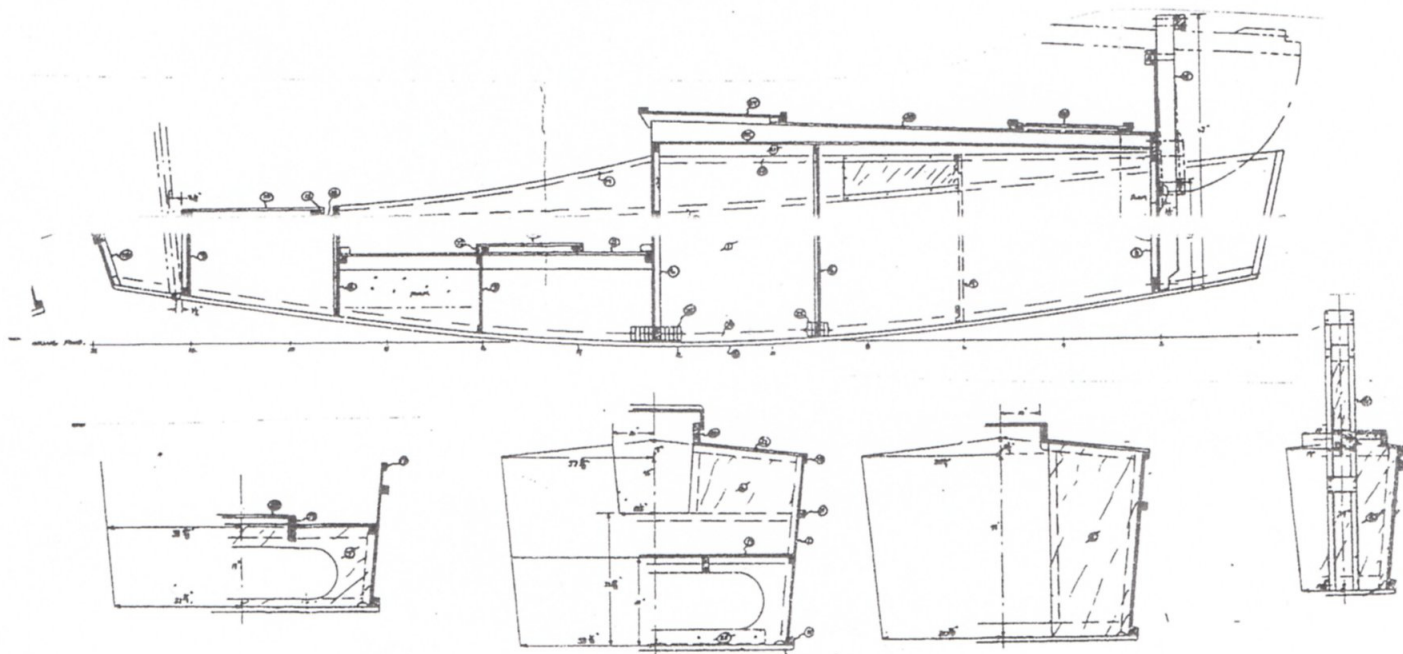
I used a gaff main in hopes that stepping the shorter mast will be a one man job. There's a mizzen for extra control. There's 700 pounds of ballast as steel bars bolted to her bulkheads. She draws only 9" of water board up.

I have little experience with this size boat. A good friend once had an Eddy and Duff Shearwater which is about this style, but a bit longer and of fiberglass. He was in the process of relocating, his house sold, and wife and kids already in the new town. So he batched it for a couple of weeks in his Shearwater while waiting for final release from his old job. He was parked

one day I went out to sail with him and as I clambered over his tangled collection of clothes and junk food (he'd readapted to bachelor life very quickly) he remarked, "You know, I miss my wife and kids a lot, but...."

That Shearwater had an aluminum mast with three simple stays. It went up solo in a flash and left me thinking a stayed mast has its place in larger trailer boats. But a stayed mast may not work in Viola's case. The bow doesn't allow a good spread on the stay wires.

Viola needs 25 sheets of 1/2" plywood. Plans are \$25 until one gets tested.



1 4 1/4 ROUND

1 1/2

5'3"

5/8

4' ROUND SOLID

(I)

3"

7'



VIOLA

SHEET 3  
SAIL RIG

