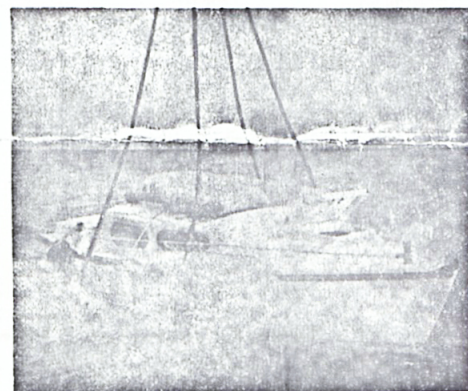


Fin keel version standard craft.

### JUST COMPARE THESE LEADING FEATURES . . .

Very strong round bilge hull in fibreglass ● Hydrofoil twin keels or fin keel  
Designed for safety offshore ● Self-righting factor ensures quick return to  
upright position in unlikely event of a sudden 'knock-down' ● Points very close  
and has very fast performance ● JOG rating possible ● Well planned accom-  
modation for four with good stowage ● Extra long self draining cockpit ● Very  
stiff yet an exhilarating craft to sail ● All parts standard and easily replaceable  
'International' alloy mast and boom fitted with main reefing ● Seaworthiness  
brings foreign cruising within holiday planning ● Easily trailed thus  
providing fresh sailing grounds if required ● Built to give years of hard service  
with minimum upkeep ● Craft backed by our renowned after sales service  
arrangements in ten countries ● Race Proven in Europe and U.S.A.



9ft. 0in. Water drop test.

### SPECIFICATION OF STANDARD/DELUXE VERSION

Hull/Superstructure—fibreglass with best Lloyds approved materials 6oz chopped strand matt (hand laid) above the waterline and 10oz below. Maximum hull thickness around the keels is  $\frac{1}{2}$ in. decreasing to approximately  $\frac{1}{4}$ in. above deck level. Cabin roof again approximately  $\frac{1}{2}$ in. thick and suitably reinforced. Best filler free resins used and construction carried out under rigid temperature control throughout using clear (unpigmented) resin laminate.

Standing Rigging of stainless steel (1 x 19).  $\frac{1}{2}$ in. manganese bronze rigging screws.  
Running Rigging. Main and Jib sheets of terylene. 3in. Tufnol sheet winches with cleats fitted. Tufnol sheet and halliard blocks. Sheet Horse correctly angled in stainless steel.  
Mast and Boom of aluminium with stainless steel fittings. Mast stepped on laminated main beam with stresses taken down to the hog.  
Boom fitted with main reefing gear. Deck and Rudder fittings of gunmetal.  
Stemhead roller standard. 2 $\frac{1}{2}$ in. oak samson post stepped down to hog.  
Outboard brackets (S/S) with tracks on transom fitted as standard.

**ACCOMMODATION** to include four separate berths of not less than 6ft 2in (1.88m) in length. Provision for marine toilet. Sink unit, etc. to be located on starboard side. Cooker located in port galley locker. Chain locker to be standard. Adequate locker space to be incorporated in cabin. Shelf lockers fitted above berths. Ventilators above toilet and sink unit to be fitted as standard.

**COCKPIT** to be one piece moulding fibreglass and self draining. Cockpit to have ample stowage facilities.

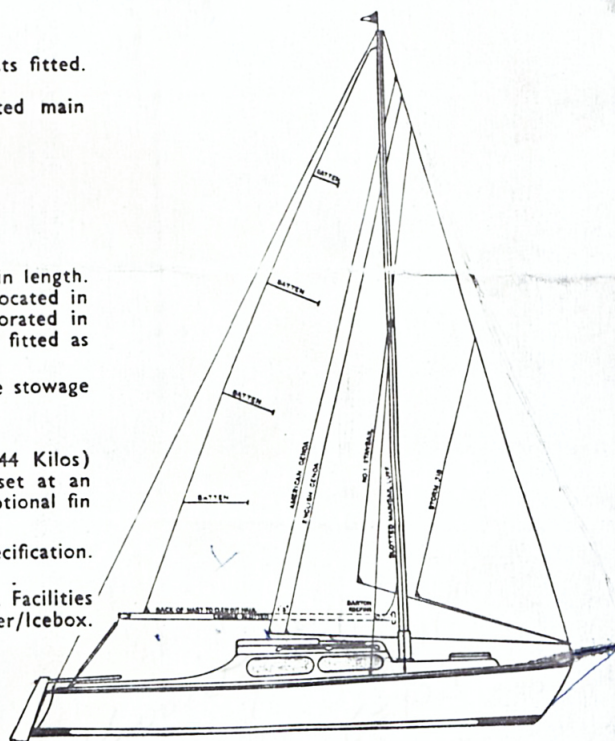
**HATCHES**—forward and main to be of fibreglass.

**KEELS** to be moulded in hydrofoil shape and to carry approximately 400 lbs (181.44 Kilos) each internal ballast. Base of keels to be protected with runners/shoes. Keels are set at an angle to provide maximum draft with lee keel at the hull's optimum angle of heel. Optional fin keel available.

**CRAFT** to be constructed from Lloyds approved materials to Lloyds approved specification. Craft to be completed to acceptable British Yacht Standards throughout.

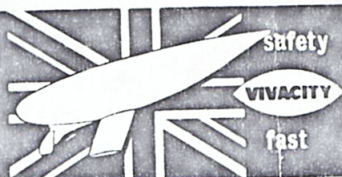
**DE LUXE VIVACITY** also has—Double roof lining extended to bow. Table/Chart table. Facilities for removable cabin dividers. Cookers on slide out base below step. Stern locker/icebox. Additional stowage shelf lockers. Marine alloy windows.

We reserve the right to alter and improve the above specifications.



## RUSSELL MARINE LTD.

CALVIA WORKS, Prince Avenue,  
Southend-on-Sea, Essex,  
Telephone: Southend-on-Sea 31188/9



**SKS YACHT SALES**  
7827 VICKSBURG AVE.  
LOS ANGELES, CALIF. 90045





#### SPECIFICATIONS

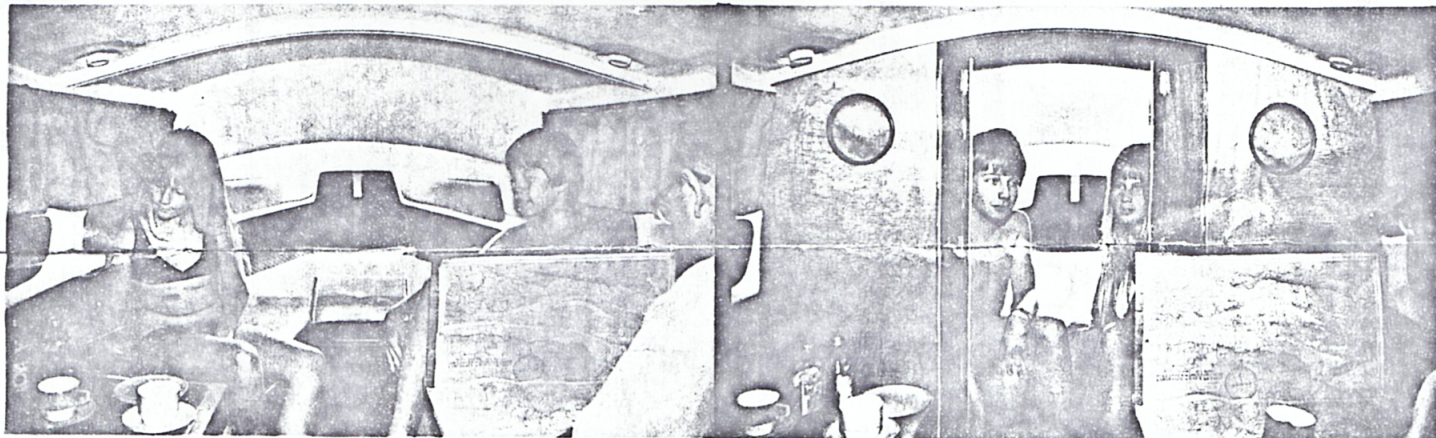
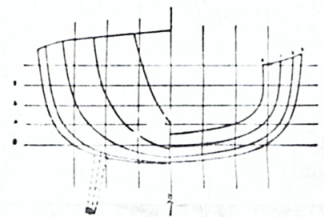
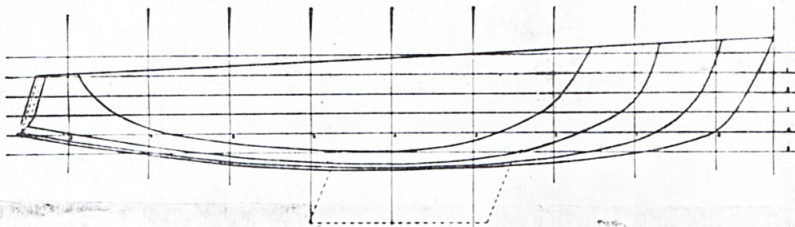
L.O.A. 20ft 0in (6.10m)  
L.W.L. 18ft 5in (5.62m)  
Beam max. 7ft 1in (2.133m)  
Draft 2ft 6in Twin (0.74m)  
3ft 3in Fin (0.99m)  
Displ. 2000lbs (907.20kg)  
Ballast 800lbs (362.88kg)  
Thames Meas. 3.4 tons  
Mast height 22ft 6in (6.85m)  
Mast height racing 25ft 9in (7.81m)

#### SAIL AREA

Main Sail 100sq ft 9.29sq m  
Fore Sail 75sq ft 6.97sq m  
Storm Jib 30sq ft 2.79sq m  
115 Genoa 115sq ft 10.68sq m

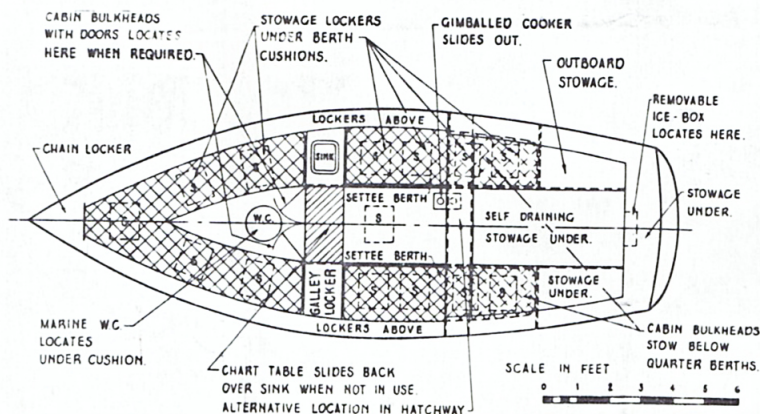
#### RACING KEEL BOAT

Main Sail 124sq ft 11.52sq m  
Fore Sail 105sq ft 9.75sq m  
120 Genoa 120sq ft 11.14sq m  
Spinnaker 250sq ft 23.23sq m



By day.

By night.



#### DE LUXE VERSION ADVANTAGES

- ★ More headroom.
- ★ Optional separate cabins at night or for W.C. privacy.
- ★ Marine alloy framed windows.
- ★ Chart table.
- ★ Mobile cooker facility.
- ★ Removable ice box.

The berth layout plan is virtually identical in both Standard and De Luxe versions.