

# WESTSAIL® 42

## A World Cruiser

Length . . . . . 42'11"  
 Waterline . . . . . 33'4"  
 Beam . . . . . 13'  
 Draft . . . . . 5'8"  
 Displacement . . 31,500 lbs  
 Ballast . . . . . 11,000 lbs  
 Sail Area  
   Cutter . . . . . 965 sq ft  
   Ketch . . . . . 1097 sq ft

*I* 21.24  
*J* 49.5  
*E* 17.13  
*P* 44.53

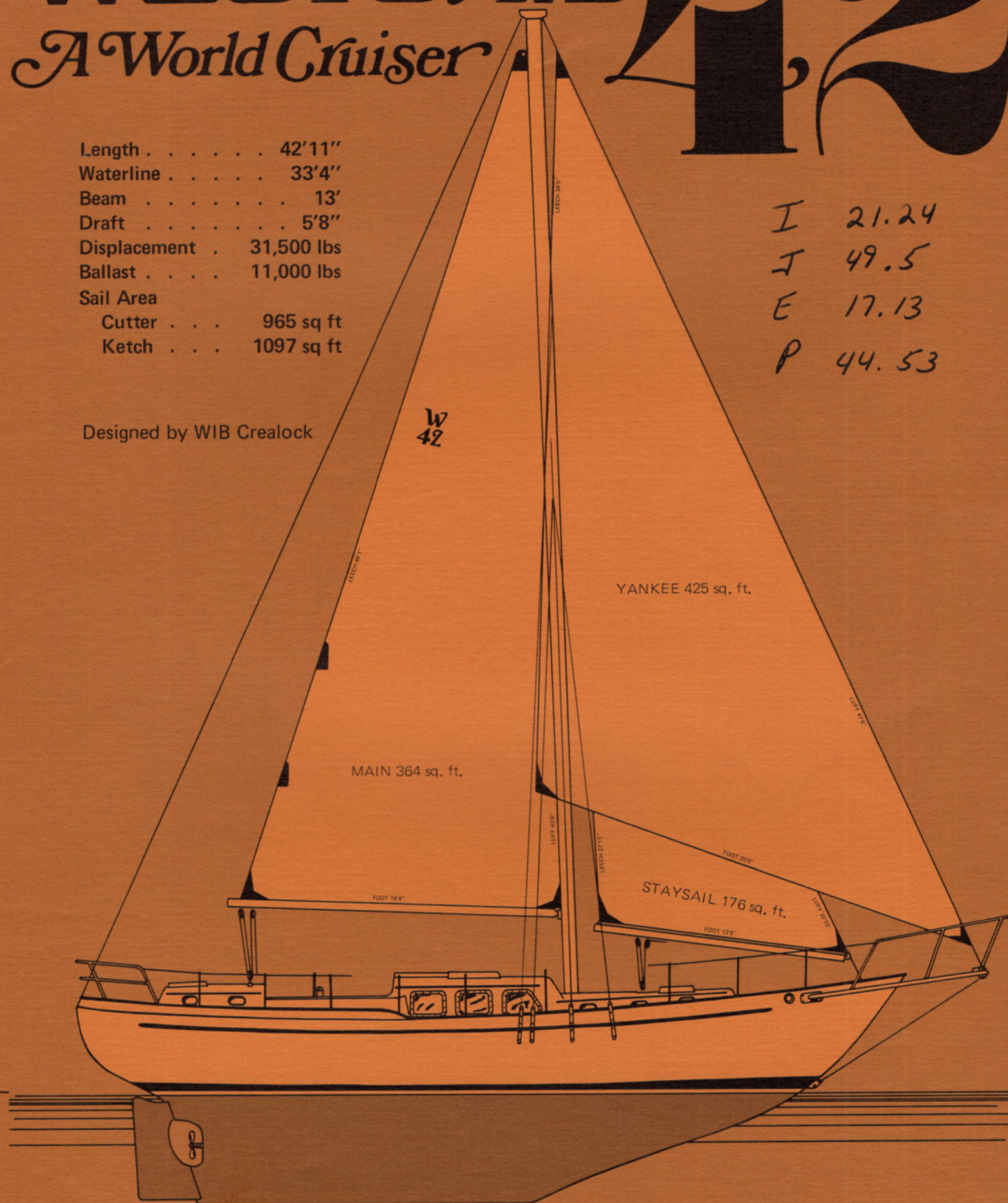
Designed by WIB Crealock

W  
42

YANKEE 425 sq. ft.

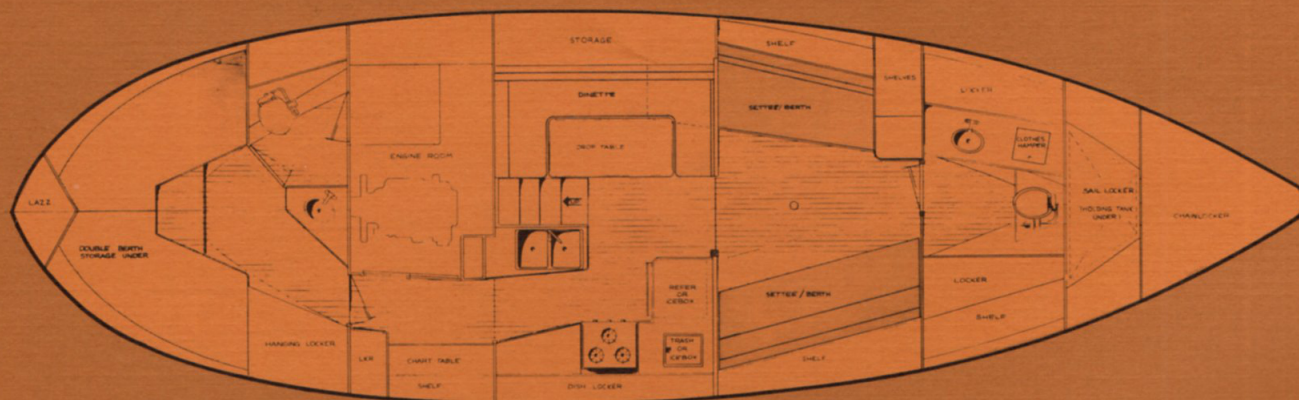
MAIN 364 sq. ft.

STAYSAIL 176 sq. ft.





# Standard Equipment List



## WESTSAIL 42 SHIPMASTER

Finished as a complete boat in gleaming hardwoods and bronze, the Westsail 42 shipmaster is ready for you to outfit her yourself with sails, winches, and cruising gear of your choice. You can have Westsail install part of your gear or ours in our custom shop, then complete her outfitting yourself, if you like. The Westsail 42 shipmaster is described below by the following specifications:

### GENERAL

**Quality:** All components are of first quality throughout, with polyester resin applied in accordance with manufacturer's recommendations under controlled conditions.

**Hull Laminate:** Consists of two coats of gelcoat (standard color: ivory) followed by a hand layup consisting of a minimum of 108 oz. per square yard of fiberglass mat, and 144 oz. per square yard of fiberglass woven roving below the water line — 81 oz. per square yard mat and 120 oz. per square yard woven roving above the water line. Boot stripe and rail stripe, gelcoated in.

**Deck Laminate:** Consists of two coats of gelcoat (standard colors: ivory base & camel non-skid) followed by hand laid up fiberglass materials totaling 153 oz. per square yard enclosing a plywood core. Additionally, the mast step encloses a 2" thick plywood core. The deck is a one-piece molding including the cabin trunks and cockpit, and is complete with non-skid and teak trim.

**Rudder:** Fiberglass construction on a one-piece support and stainless steel tube post structure with teflon thrust washers. A bronze gudgeon at the heel is bronze-bolted to a solid portion of the hull that is fiberglass sealed and stiffened to prevent any possibility of hull leaks.

**Ballast:** Composed of 11,000 pounds of lead, all sealed and bonded to hull with fiberglass mat and roving.

### EXTERIOR EQUIPMENT AND DECK HARDWARE

**Exterior Joinerwork:** Teak or suitable hardwood. Corners are rounded to prevent injury to crew. Included are teak caprails, rubrails, and handrails.

**Companionway Hatch:** Sliding type on suitable runners with hasp and combination lock. The companionway is teak framed and equipped with teak drop boards.

**Forward Hatch:** Plexiglass with teak slats, hinged at its aft edge and equipped with dog and safety chain.

**Aft Cabin Hatch:** Plexiglass with teak slats, equipped with dog and safety chain.

**Lazarette Hatch:** Round bronze manhole in a bronze frame (sealed for propane).

**Cockpit:** Molded one-piece with deck, teak faced. The sole is bolted and sealed but removable for major engine service. The cockpit is self-bailing, fitted with three 1½" drains, connected to seacocks below the waterline. Pedestal steering with a 32" wheel is mounted to the cockpit sole and is backed-up with an emergency tiller. Wheel brake.

Cleats and mooring bits are included.

**Hawse Pipes:** Cast bronze; 2 forward, 2 aft with two amidships as scuppers.

Ten 4" x 7" bronze opening port lights.

Six bronze-framed fixed windows.

**Through Hull Fittings:** Below the water line: bronze and fitted with through-bolted bronze seacocks. (All thru-hulls are bronze with the exception of the manual and electric bilge pump discharges.)

Bow pulpit, stern pulpit, and double lifelines with stanchions are installed with lifeline gates each side.

Two mast pulpits with teak pin rails.

### SPARS AND RIGGING

Cutter or Ketch rig is standard. Heavy wall section aluminum spars with protective ivory paint. The mast is stepped on deck with a stainless steel post below decks to support the compression load.



**Mast:** Fitted with storm trysail track and with spreader lights, masthead light, bow light, red-over-green navigation lights, radio coax, and with a messenger line to facilitate any future wiring additions. All wires are enclosed in PVC tubing that is attached to the inside of the mast. An extra, unused set of sheaves is standard at the masthead.

**Main Boom:** Fitted with a fixed gooseneck topping lift controlled from a cleat forward on the boom, and a four-part main outhaul controlled from a cleat forward on the boom. The main sheet leads forward under the boom to the mast, then to the cabin top and aft to a cleat at the cockpit.

**Staysail Boom:** Fitted with a topping lift and outhaul; sheeted to a deck block and aft to the cockpit.

**Bowsprit Platform:** Heavy stainless steel construction with teak walking surfaces and one anchor roller.

**Standing Rigging:** Includes forestay, staysail stay, permanent backstay, upper shrouds, fore and aft lower shrouds, and intermediates. The bow platform is fitted with a bobstay. All standing rigging is minimum 5/16" dia. 1 x 19 stainless steel with 5/8" turnbuckles fitted with toggles, with marine eyes on wire (except intermediate & mizzen).

**Running Rigging:** Includes main, staysail, and jib sheets of 1/2" braided line, all-line main, staysail, and jib hal-yards of 1/2" prestretched line. The staysail topping lift and outhaul are all line, the main topping lift and outhaul are combinations of plastic-coated stainless steel wire and line.

#### ENGINE AND ELECTRICAL

Fiberglass engine room liner with oil drip pan to prevent fuel, oil, or grease spills from entering the bilge.

**Engine:** Perkins 4-108 diesel rated at 36 HP and equipped with electric start, fuse-protected alternator, and fresh-water cooling with heat exchanger and raw-water strainer. A three-bladed prop with zinc collar is fitted standard. Between the fuel tank and engine, a fuel filter and water separator are fitted.

**Fuel Capacity:** 103 gal. total in two 51 gal. aluminum tanks.

**Controls:** Engine speed and shift controls are pedestal-mounted. The cockpit-mounted, lighted instrument panel includes a tachometer, water temperature gauge, charge and oil pressure gauges, engine hour meter, key start, and engine stop control; audio oil pressure alarm.

The engine room inlet vent is located in the cockpit.

Two heavy duty 12V batteries with selector switch and battery charge indicators.

**Navigation Lights:** International navigation lights, spreader lights, masthead light, bow light.

**12V System;** 110V electrical system with duplex bulkhead plugs; grounded shore power cord.

#### PLUMBING

**Water Capacity:** 354 gal. total fresh water in aluminum tanks.

**Water System:** Electric pressure water system with independent hand-pump fresh water system as a back up and 110V water heater. Galley salt water pump.

**Heads:** Full size, hand-pump marine toilet in forward and aft heads with holding tank, deck and overboard discharges in each. Forward head has shower with curtain and stainless steel lavatory sink. Aft lavatory sink is in the stateroom.

**Bilge Pump:** Manual bilge pump operated from the cockpit; automatic electric bilge pump.

#### INTERIOR

**Cabin:** Non-skid throughout with hatches that provide excellent bilge access. Shag carpeting over painted non-skid until fiberglass cabin sole is available.

**Joinerwork:** All interior joinerwork is teak and mahogany or suitable hardwood.. Heavy duty handrails throughout with sturdy corner posts, searails, and fiddles. All with rounded corners to prevent injury. Brightwork is sealed and oiled. The inside of all lockers and cabinets have 2 coats of paint.

Formica (or equivalent) covered dresser and table tops.

Overhead: Tongue and groove ash with deck beams.

Teak-trimmed locker outboard of dinette.

Tiled heater alcove over wet locker.

**Berths:** Main cabin has single lower berth on port side, double pilot berth on starboard side. Convertible dinette makes in-to double berth. Twin berths in after stateroom convertible to large double berth.

110V/12V refrigerator with small top loading icebox or large top loading icebox.

**Stove:** Three-burner, gimbaled propane stove with oven installed in stainless steel lined space with insulated overhead. The propane tank is mounted in a vented, water-tight compartment aft.

Extra deep stainless steel double sink in galley with mixing faucet and drain overboard through bronze seacock.

Formica (or equivalent) topped chart table in passageway, with drawers and lockers and flip down seat.

Cruise durable, stain resistant, 4" decorator cushions in choice of colors from Westsail decorator samples.

Brown privacy curtains between the galley and main salon and between port and starboard berths with tracks and ties.

Teak companionway steps.

**Stowage:** Drawers of the self-locking lift-to-open type. Hanging lockers (all cedar lined except wet lockers), cabinet lockers, exposed-lid lockers, and hidden lid lockers.

12/76

WESTSAIL®  
42

PRICES AND SPECIFICATIONS SUBJECT TO CHANGE WITHOUT NOTICE



### WESTSAIL 42 VOYAGER

She's everything you need for sea trials and your voyage! If you plan on weekendening in nearby islands for a while, this Westsail is all you will need till you're ready for longer passages. She's outfitted for economy and quality, and she's the most reasonable way to begin *your* cruising life. The Westsail 42 voyager is a shipmaster plus the following:

Suit of working West sails: 9.25 oz. main, 7.25 oz. yankee jib, 8.25 oz. staysail, 9.25 oz. mizzen (ketch rig)  
Sail covers  
Winches: 2 Barlow No. 26 jib sheet, 1 Barlow No. 24 main sheet, 3 Barlow No. 16 halyard winches (or equivalent)  
Anchor package No. 2  
Binnacle mounted compass with pedestal guard  
Depth sounder, Morrow 60/60  
Port light curtains  
Radio grounding package

Knotmeter, Telcor series 190 0-12  
Distance log, Telcor 195  
Boom gallows  
Name and hailing port painted on stern  
Cockpit cushions, closed cell foam  
Anchor windlass, Plath No. 1 or equivalent  
Lightning protection  
Additional port light in cockpit area  
Radio direction finder  
Bottom Paint  
Shaft and lock

### WESTSAIL 42 PASSAGEMAKER

Now you're really set for any kind of cruising with a flexible complement of sails and the Westsail luxury trademark — gleaming teak decks and teak stripped cabin sole! You can go offshore, across oceans, or wait till the spirit moves you to drop the docklines and sail away. With the passagemaker you'll go in safety and style! She's outfitted the way many of our world cruisers have departed . . . not extravagant but equipped with good sound time-proven gear. The Westsail 42 passagemaker is a voyager plus the following:

Balance of coastal sails package: 6.5 oz. genoa, 1.5 oz. nylon drifter, 9.25 oz. storm jib, 1.5 oz. nylon mizzen staysail (ketch rig)  
Jiffy reefing, main (and mizzen)  
Boom vang  
Main and staysail traveler  
Ventilators, 5  
Running backstay system  
Teak wheel, 32"  
Wind speed and direction indicators

Genoa track package  
Teak decks  
Teak stripped cabin sole  
Second anchor roller  
Stern anchor package No. 4  
Minor engine spare parts kit  
Battery charger  
VHF radio  
Stereo system, cassette

### WESTSAIL 42 CIRCUMNAVIGATOR

The circumnavigator is the ultimate cruising sailboat, completely outfitted for world voyaging — all you need add is you and your personal belongings. Equipped with time tested Westsail gear, the circumnavigator is designed for the sailor who wishes to leave for a long distance cruise without the usual delays of ordering and specifying special equipment or for the busy individual who feels he hasn't the time to research every option, but wants what Westsail recommends as the best there is. The gear covers every eventuality from sunshades and wind scoops for the tropics to a dodger and good heater for Northern latitudes to a drifter for the doldrums to storm sails for more exciting times. The Westsail 42 circumnavigator is a passagemaker plus the following:

Balance of offshore sails package: 3.8 oz. reacher, 8.25 oz. working jib, 9.25 oz. storm trysail  
Perkins 4-236 engine in lieu of standard  
All teak interior  
Heating stoves, electric and charcoal  
Mast stairs  
Self-steering vane  
Major engine spare parts kit  
Single sideband radio

Dodger  
Sunshade  
Two hatch wind scoops  
Teak cockpit sole  
Masthead strobe light  
2 Barient 28 self-tailing jib sheet winches, 1 Barient 23 self-tailing main sheet, 3 Barient 22 halyard winches (or equivalent) in lieu of standard (4 halyard winches on ketch.)  
Port light screens

*Any Westsail model from bare hull to circumnavigator may be modified in our custom shop to your exact specifications. If, for example, you want a boat outfitted somewhere between a voyager and a passagemaker, we will build your voyager and our custom shop will quote you for any additions or modifications you wish to make. For custom quotes, please call (714) 549-9711.*

PRICES AND SPECIFICATIONS SUBJECT TO CHANGE WITHOUT NOTICE

12/76



## Questions & Answers

*Q How would one cruise the Bahamas with a 5'8" draft?*

A The majority of the Bahama banks are deep enough; only a few harbor entrances afford a problem, but they only amount to about 20% of the possible areas one could wish to visit. We wanted to avoid the problems inherent with a centerboard and to provide the best open ocean sailing characteristics, thus the modest draft. The keel is wide and straight, allowing for beaching the boat if necessary.

*Q Why is the boat so expensive compared to some of the other 42 footers on the market?*

A As with the 32, the Westsail 42 is uncompromising in quality materials and attention to detail in order to produce the finest quality bluewater cruising sailboat. The extra skilled labor and additional materials costs appear to force the price up. On a price per pound basis, though, we actually compare quite favorably.

*Q What kind of beadroom is there in various places on the boat?*

A Main salon: 6'5"; fore cabin: 6'5"–6'3"; aft cabin 6' at forward end; walkway aft: 5'–5'3".

*Q Are the large windows on the raised doghouse dangerous in heavy seas?*

A These windows are made of 3/8" super strength absite with bronze through bolted frames. The strength of the whole window assembly matches that of the deckhouse itself; thus these windows can carry the size with safety.

*Q Are your delivery dates really as bad as I've heard? Why don't you build more boats?*

A Since its inception, Westsail has been increasing production significantly, making deliveries much more reasonable in length than they once were. However, we now are in limited production to assure quality, so it is advisable to place your order as soon as you have some idea when you want a boat.

*Q How does the 42 sail in light air?*

4 As with the 32, the 42 sails like a dream. "Experts" often work out mathematical ratios as to why they should be slow boats, but experience shows that they aren't. See your local rep for a demonstration sail to find out for yourself!

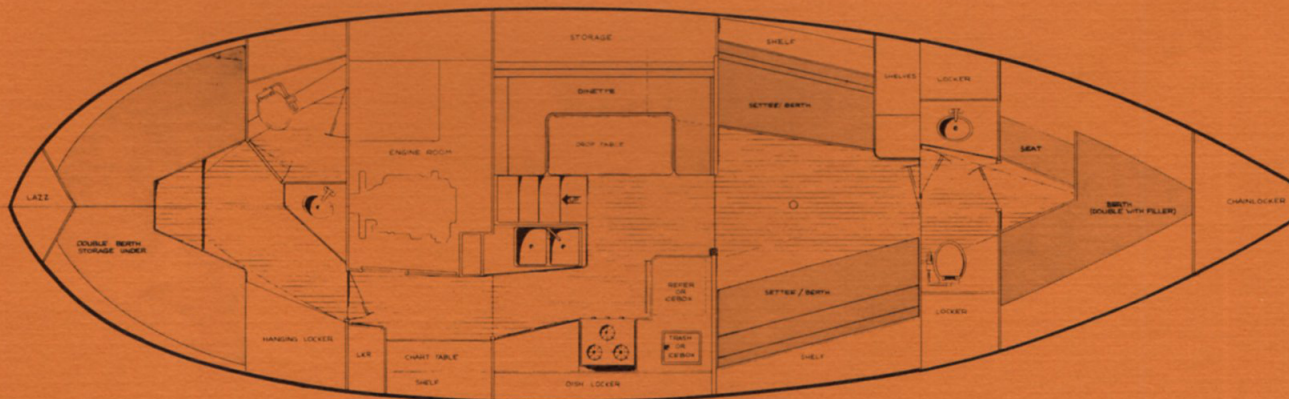
*Q Is there room for a generator? How big?*

A Space is provided in the engine room for a separate 3KW diesel generator.

*Q Why a canoe stern?*

A canoe stern offers the best sea-going qualities of the double ender and the short counter. The double ender, though very seaworthy, tends to have a somewhat steep run. The canoe stern with its overhang avoids this problem. On the other hand, compared with a counter or transom stern, the canoe stern presents a better shape to following seas.

## OPTIONAL CHARTER INTERIOR





# Custom Boats

## WESTSAIL 42 BARE HULL



Fiberglass hull, fiberglass sheer clamp as described under Westsail 42 Shipmaster, general section "Quality" and "Hull Laminate."

## WESTSAIL 42 FIBERGLASS PARTS



Starting with the fiberglass parts you have an opportunity to really save substantially. Our construction manual will take out the guesswork. Plan on 1 — 1½ years to finish her out. The package includes:

Hull (see above)  
Rudder (see Shipmaster), installed  
Steel I-beam mast step support, cabin soles  
Two color deck with cockpit, non-skid molded in,  
installed (see Shipmaster)

Ballast, all lead, installed  
Engine room sole, engine pan, and aft cabin one piece  
fiberglass molding, installed  
Construction manual  
Sail emblem pattern

## WESTSAIL 42 CUSTOM SAILAWAY



An economical way to enjoy your cruising sailboat while you modify the interior to suit you. The boat is useable upon delivery, both to sail on and to live in (if you don't mind a rather spartan existence). The custom sailaway is ready to sail on the exterior including a suit of West Sails. Inside, she's bare bones down to the cabin sole. Within a couple of weeks you can have a comfortable bunk and rig up a stove. A few months and you'll be putting on finish trim. Working from the most complete finishing manual available (it's the same one used in our yard) you can't go wrong. The sailaway includes:

### EXTERIOR

A fiberglass parts package (see above) plus 2 scuppers and  
cockpit drains  
Manual bilge pump  
Wheel and steering controls with brake  
Six fixed windows  
Caprails, handrails  
Mooring cleats  
Fiberglass hatches  
Bowsprit pulpit and platform

### INTERIOR

Cabin sole, installed  
Steel mast step and support column  
Temporary ladder  
All structural bulkheads, installed  
Construction manual  
Full fuel and water tanks (see Shipmaster)

### SPARS & RIGGING

Heavy wall section aluminum spars for cutter rig  
Chainplates & parts necessary to step the mast  
Blocks and cleats necessary to sail  
5/16" 1 x 19 stainless steel standing rigging  
5/8" turnbuckles and toggles  
Suit of working West Sails, including running rigging  
Winches: 2 Barlow No. 26 jib, 1 Barlow No. 20 main, 3  
Barlow 16 halyard (or equivalent)

### POWER OPTION (at an additional cost)

The custom sailaway is available as a custom poweraway with the following additional parts installed:  
Perkins 4-108 engine installed ready to run, engine pan, battery with switch and cables, engine seacock and plumbing, shaft log and prop, engine controls and instrument panel, exhaust system, fuel filter and water trap. Installed, tested and ready to run.





## WESTSAIL 42 CUSTOM LIVEBOARD

The ultimate bargain! A semi-finished Westsail 42 with all the hard, heavy work done! You can move aboard, use the boat for a voyage, and take your time doing the finish detail work, shopping for bargains! It's like a custom sailaway with the power option plus a pre-assembled, installed, untrimmed interior and a few accessories to really make living aboard possible. Put a little talent to use and your boat will look better than the factory completed ones in no time at all. The custom liveboard includes:

### SPARS AND RIGGING

Ketch or cutter rig with spars, rigging, and winches as on the custom sailaway plus:

Storm trysail track

Radio coaxial, messenger line

Spreader lights, anchor light, international navigation lights

### POWER

Total "power option" on custom sailaway is standard on this package:

Perkins 4-108 engine installed, engine pan, battery with switch and cables, engine seacock and plumbing, shaft log and prop, engine controls and instrument panel, exhaust system, fuel filter and water trap. Installed, tested, and ready to run.

### EXTERIOR

A custom sailaway plus:

Teak rubrail

Hawse pipes

Wheel steering with brake

Lazarette storage locker

Running lights installed with temporary wiring

### INTERIOR

A custom sailaway plus:

Untrimmed plywood furniture, cabinets, and bulkheads assembled, installed, and bonded in.

WSS electrical panel, necessary circuit breakers, wired and installed (but easy to add to).

Three 12V electric lights, temporarily installed

Hand pump in galley, galley sink, and seacock

One-burner gimbaled kerosene stove

Dinette cushions (choice of fabrics)

Self-contained head (portable), installed

Fiberglass ice box, foamed and installed with insulated top

ALL PARTS & MATERIAL FOR FINISHING ARE AVAILABLE – INQUIRE

# Thinking of building a boat?

## "FROM A BARE HULL" by Ferenc Mate

*Over 500 pages!*

Here's a book that has the answers to all your questions when you're wondering where to buy it, how to design it, and how to build it. Written by a Westsail owner while he was completing his own 32 footer from fiberglass hull and deck, "From a Bare Hull" is as good as having an old world craftsman looking over your shoulder while you're working.

You'll find chapters on what tools to get and how to use them, how to plan your interior, tips and techniques for every phase of construction, and the only complete listing with drawings of all the reputable builders offering kit boats. With this book you needn't worry "can I do it myself?" With hundreds of drawings and photographs, the mystery will disappear.

It is available from Westsail Corporation, P. O. Box 1828, Costa Mesa, California 92626 for \$21.00 postpaid.





## WESTSAIL CRUISING CENTERS

with a Westsail 42 in the water available for your inspection

### SOUTHERN CALIFORNIA

Newport Beach Cruising Center  
Lido Village Center, Suite 201  
3432 Via Oporto  
Newport Beach, CA 92660  
(714) 675-5190

### NORTHERN CALIFORNIA

San Francisco Cruising Center  
108 Caledonia Street  
Sausalito, CA 94965  
(415) 332-5212

### WASHINGTON

Seattle Cruising Center  
1219 Westlake Avenue North  
Seattle, WA 98109  
(206) 285-6230

### EASTERN CANADA

Toronto Cruising Center  
Westlyn Enterprises, Ltd.  
30 Beechwood Ave.  
Willowdale, Ontario  
Canada M2L 1J1  
(416) 223-7961

### CONNECTICUT

Connecticut Cruising Center  
World Cruising Yachts, Inc.  
119 Rowayton Ave.  
Rowayton, CT 06853  
(203) 853-4744

### NORTH CAROLINA

Wrightsville Beach Cruising Center  
Seagate Yachts  
1322 Airline Road  
P.O. Box 858  
Wrightsville Beach, NC 28480  
(919) 256-4597

### CHESAPEAKE BAY REGION

Chesapeake Bay Cruising Center  
Horn Point Harbor  
P. O. Box 3342  
107 Eastern Avenue, Eastport  
Annapolis, MD 21403  
(301) 267-9770

### NEW ENGLAND

New England Cruising Center  
World Cruising Yachts, Inc.  
91 Front Street  
Marblehead, MA 01945  
(617) 631-2900

### FLORIDA

Florida Cruising Center  
1871 S. E. 17th Street  
Ft. Lauderdale, FL 33316  
(305) 523-1434

### TEXAS

Houston Cruising Center  
FM2094, Kemah, TX  
Mailing address:  
Houston Seabrook Yacht Sales  
P. O. Box 341  
Seabrook, TX 77586  
(713) 334-2911

## WESTSAIL 42 REPRESENTATIVES

with a Westsail 42 or 43 available for your inspection by appointment

### ILLINOIS

John Simpson  
2715 Colfax Avenue  
Evanston, Illinois 60201  
(312) 869-6454

### HAWAII

Harry Huffaker  
1600 Kapiolani Blvd. Suite 807  
Honolulu, HI 96814  
(808) 946-8374

### ARIZONA

Ervin Weiland  
4050 W. Whitton  
Phoenix, AZ 85019  
(602) 272-8292

### VENEZUELA

Karl Nesbit  
Apartado 294  
La Guaira, Venezuela

### MINNESOTA

Cy Smythe/Dick Bernick  
North Wind Nautic  
P. O. Box 1184  
St. Cloud, MN 56301  
(612) 252-6442



KETCH RIG SA Main: 364 sq. ft. Mizzen: 132 sq. ft. Staysail: 176 sq. ft. Yankee: 425 sq. ft.

FORM 105

# WESTSAIL®

WESTSAIL CORPORATION P. O. Box 1828, Costa Mesa, California 92626 (714) 549-9711