

V-Flyer

ARTICLE VI

Sails

GENERAL: No other sails than the standard size mainsail, jib, and spinnaker are allowed.

Loose-footed mainsails, jib booms or part length clubs, double-luff mainsails and perforated sails are barred. The use of any type of reefing is barred during racing. Leeches must be straight or convex at all points.

SAIL WINDOWS: Transparent sail windows may be incorporated into the mainsail and jib. The total area of the sail window shall not exceed 3 sq. ft. in any one sail or 5 sq. ft. total in both sails.

BATTENS: Wood, plastic or metal - 4 in mainsail to be as nearly as possible equally spaced and no longer than as follows:

Top batten-----20"	Third batten-----36"
Second batten-----34"	Bottom batten-----22"

Two (2) battens (allowed but not required) in the jib to be as nearly as possible equally spaced and no longer than 9".

SAIL CLOTH - Sails shall be of woven cotton fabric, not lighter than 3.7 oz. based on a lineal yard 28½" wide, or woven synthetic material not lighter than 3.0 oz. based on a lineal yard 28½" wide.

Spinnaker to be of woven material not lighter than 3/4 oz. based on a lineal yard 28½" wide.

DIMENSIONS - All dimensions are final stretched lengths and shall be as per official sail plan.

<u>Mainsail:</u>	Maximum	Minimum
Luff	20'-8"	None
Leech	21'-6"	None
Foot	10'-8"	None
Girth 'A' @ 1/4 pt.	3'-8½"	None
Girth 'B' @ mid-pt.	6'-7"	None
<u>Jib:</u>		
Luff	17'-1"	None
Leech	14'-9"	None
Foot	7'-1"	None
Girth @ mid-pt.	3'-11"	None
Roach in foot	0'-9"	None
<u>Spinnaker</u>		
Leeches	19'-0"	18'-6"
Foot (half)	7'-0"	6'-8"
Girth 'A'	4'-11"	4'-7" @ 5'-0"
Girth 'B'	7'-4"	7'-0" @ 10'-0"
Girth 'C'	7'-6"	7'-2" @ 15'-0"
Diagonal (Head to center-foot)	None	None

SAILS (continued)

Mainsail Headboard - Shall not exceed 4" measured at right angles to the mast. Limiting dimension is from the forward edge of the bolt rope to the after edge of the headboard, and shall not exceed 5".

Options: Cunningham holes and adjustable clew outhaul in mainsail; adjustable luff jib; Zipper luff jib and furling jib.

METHOD OF MEASUREMENT (See also Plate 3)

Corner to corner dimensions of the mainsail shall include the bolt rope and shall be measured in straight lines as follows:

- (1) Luff length - between the highest point of the headboard and the lowest point of the sail directly under the center of the tack cringle.
- (2) Foot length - between the most forward point of the sail directly ahead of the tack cringle and the aftermost point of the sail at the clew.
- (3) Leech length - between the lowest point of the sail directly under the center of the clew cringle and the highest point of the headboard.

Corner to corner dimensions of the jib shall be measured in straight lines as follows:

- (1) Luff length - between the highest point of the sail at the peak, and the tack. (See Plate 3)
- (2) Foot length - between the most forward point of the sail at the tack, and the aftermost point of the sail directly aft of the center of the clew cringle.
- (3) Leech length - between the lowest point of the sail directly under the center of the clew cringle, and the highest point of the sail at the peak.

When measuring a jib of the "zipper luff" type, the material forming the "zipper luff" (in the closed position) shall be considered as part of the sail.

When measuring a jib of the "adjustable luff" type, the luff length shall not exceed 17'-1" when pulled out to maximum adjustment.

A light pull of about three pounds shall be applied to the corner which is opposite to the side being measured. A roped edge (all luffs and mainsail foot) shall be subject to a direct line pull of sixteen pounds while it is being measured; and similarly an unroped edge (all leeches and jib foot) shall be subjected to a direct line pull of eight pounds. Mainsails should be measured without battens in place and with all pucker or leech lines released.

GIRTH MEASUREMENTS OF THE MAINSAIL AND JIB shall include the bolt rope. The mid-point of the luff of the mainsail shall be determined by folding the sail upon itself, with the top most edge of the headboard even with the lower most edge of the bolt rope at the tack. The mid-point of the leech shall be determined in similar fashion, with the headboard folded down to the clew. The quarter-points will be determined by folding the headboard down to the mid-points previously determined. Sufficient tension shall be applied to remove wrinkles. The mid-points of the jib luff and leech and the dimension of same and of the roach in the foot shall be determined (with wrinkles removed) as outlined above for the mainsail, except that the peak, tack, and clew are the points of intersection as shown on Plate 3.

THE SPINNAKER shall be laid out on the floor, folded in half along the center seam, and shall be pulled out as nearly as possible wrinkle free. Girth and diagonal points shall be chalk marked on the sail by taping from a point directly above the head cringle. The leeches shall be measured under a direct pull of three pounds from a point directly above the head cringle to a point directly below the tack-clew cringles, taken to the extreme edges of the sail. The foot shall be measured under a direct line pull of three pounds from the extreme edge of the sail directly in line with the tack-clew cringles.

ARTICLE X

Sail Number

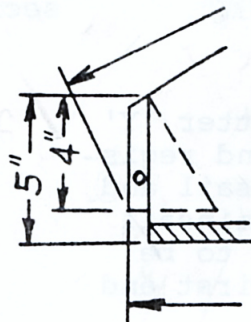
ASSIGNMENT: Official numbers shall be assigned by the secretary of the National governing body.

In all cases, the official number, once assigned, remains as identification of the said boat, regardless of ownership.
(See By-Laws, Article VI, Yacht number and name.)

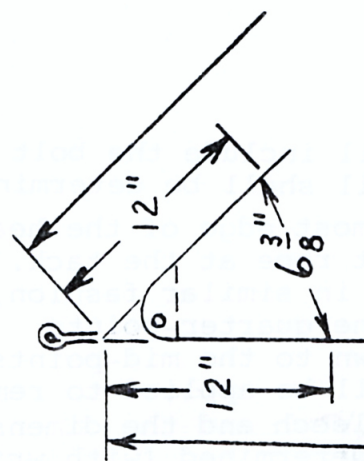
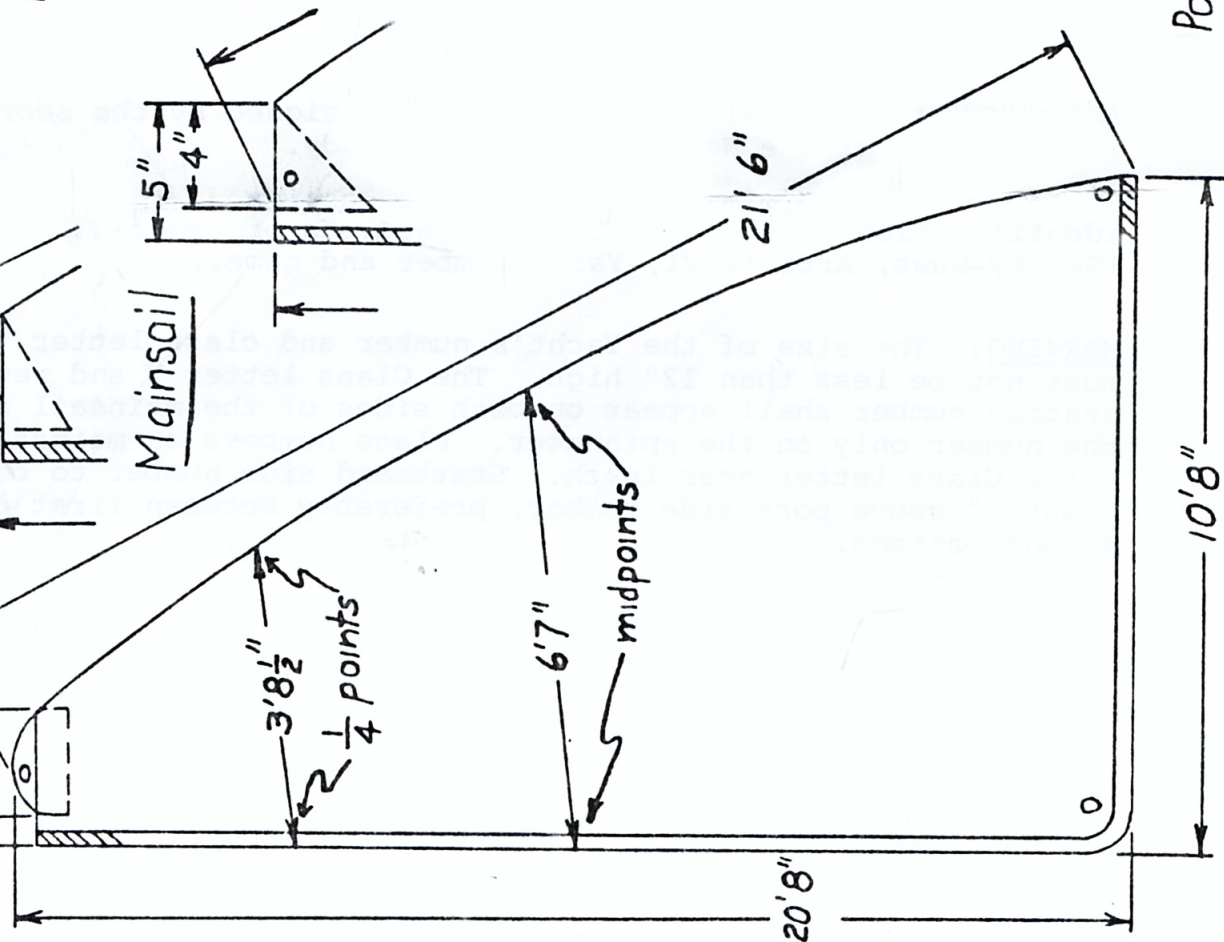
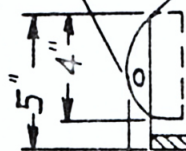
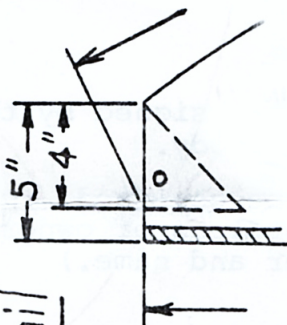
MARKING: The size of the Yacht's number and class letter 'Y' must not be less than 12" high. The Class letter Y and registration number shall appear on both sides of the mainsail and the number only on the spinnaker. Place numbers on mainsail below Class letter near leech. Starboard side number to be about 6" above port side number, preferably between first and second battens.

Y-FLYER CLASS

All dimensions are maximum
(There are no minimums)

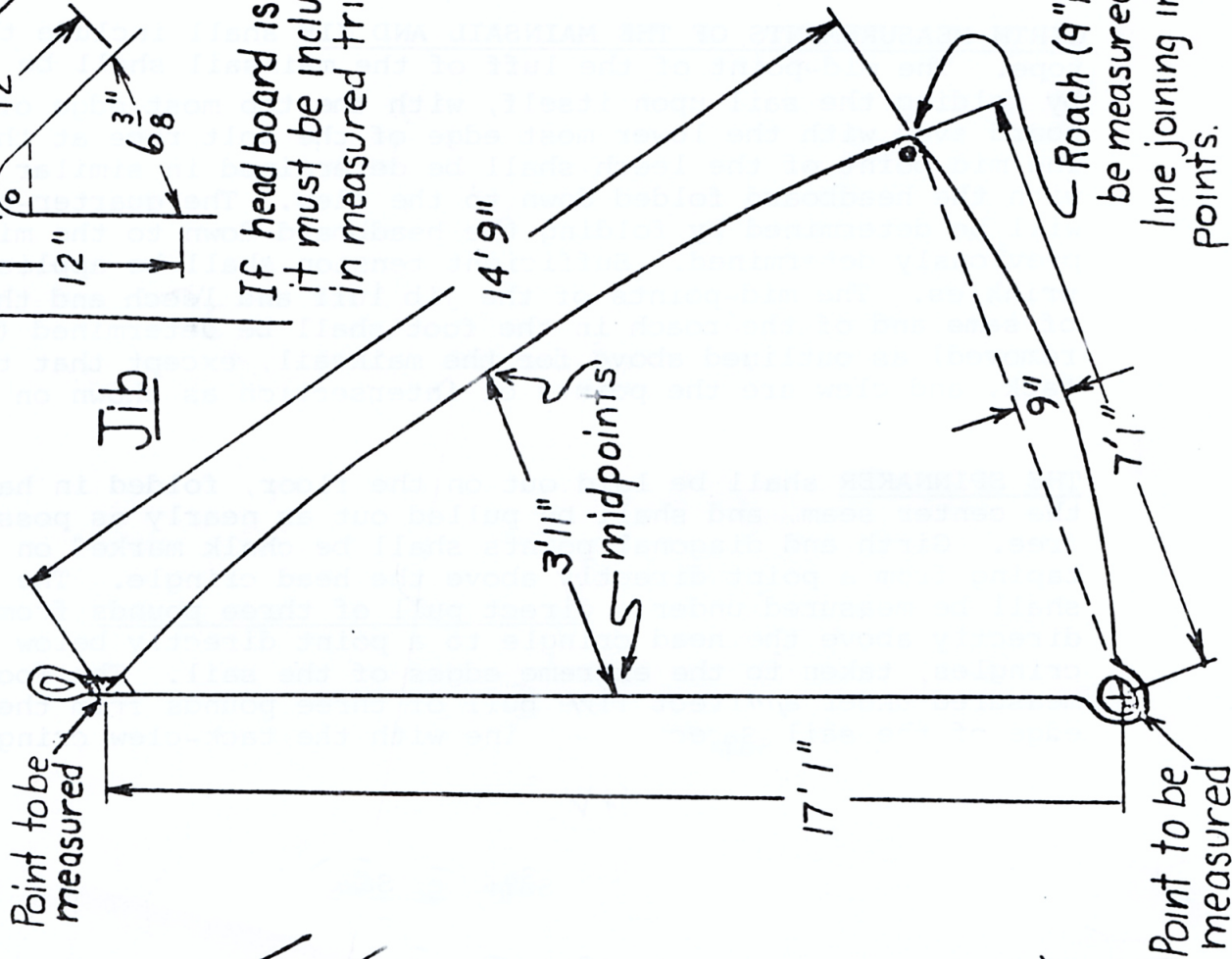


Mainsail



Jib

If head board is used
it must be included
in measured triangle.



Roach (9" max) to
be measured from
line joining intersection
points.