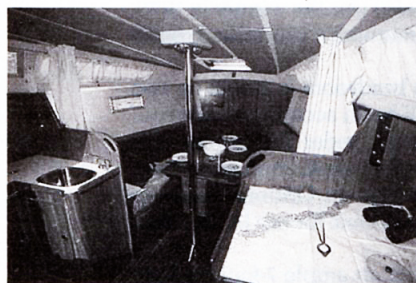




MANUFACTURER'S COMMENT

is very affordable performance design from the drawing board of the world's naval architect Philippe Briand is a definitive study of how to excel in all areas of accommodation, aesthetics, and performance in one package! The European genius of incorporating modern design features such as aft cabins and ergonomically correct cockpits and the sheer ability to use available space well is manifested "beautifully" in the YACHTING FRANCE 27. She serves as a superb introduction to the YACHTING FRANCE family of racing and cruising auxiliaries, which includes such noted yachts as the new S&S-designed Lacoste 42 and the MS series of performance motorsailers, 33'-43' LOA.

The YACHTING FRANCE 33 delivers modern cruising accommodations along with excellent performance. The first can be seen in the accompanying layout. The second: Yves Mareschal's name is synonymous with solid performance-oriented yachts up to 92' LOA! Good builders know that all sailors appreciate good performance. Using the best naval architects insures it!

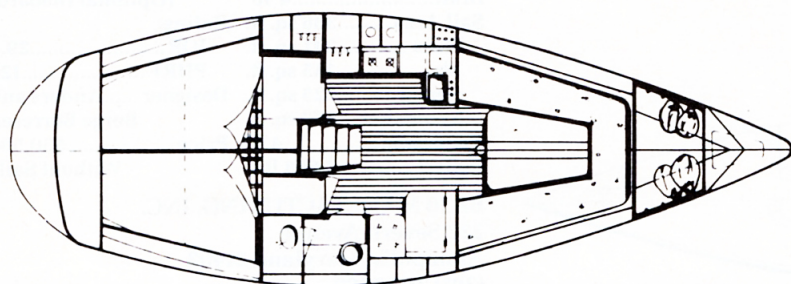


Chantiers Yachting France, located near Bordeaux on the Bay of Biscay, is a highly regarded yacht manufacturer for excellence in engineering and systems installation as well as fiberglass construction techniques. Other divisions of the YACHTING FRANCE group build such diversified and technologically advanced products as submarines, commercial craft, and military patrol boats up to 92' LOA! This unusual depth of engineering, design, and production



expertise translates into real capabilities not normally available to other yacht manufacturers. Combined with the YACHTING FRANCE 33's very attractive pricing, she offers an exceptional value in today's marketplace.

The YACHTING FRANCE 33 is completely equipped with such essentials as sails and Lewmar self-tailing winches. There is much, much more, of course. Contact us for her extensive specification sheet and the name of your nearest YACHTING FRANCE dealer!



L.O.A.	32' 8"	Ballast	2,911 lbs.
L.O.D.	31' 2"	Displacement:	7,938 lbs.
L.W.L.	26' 0"	Headroom	6' 1"
Beam	11' 0"	Berths	6
Draft:		Auxiliary:	
Fin	5' 9"	Diesel	Volvo 2002
C/B	3' 7" / 6' 9"	HP	18
Sail Area:		Fuel Capacity	21 gals.
Main	221 sq. ft.	Water Capacity:	
Genoa	377 sq. ft.		39.5 gals.
I	41' 4"	Designer:	
J	12' 0"		Yves Mareschal
P	35' 10"		
E	10' 6"		

EURO-SAILBOATS LTD.
141 East Boston Post Road
Mamaroneck, New York 10543
(914) 381-4500