

MANUFACTURER'S COMMENT

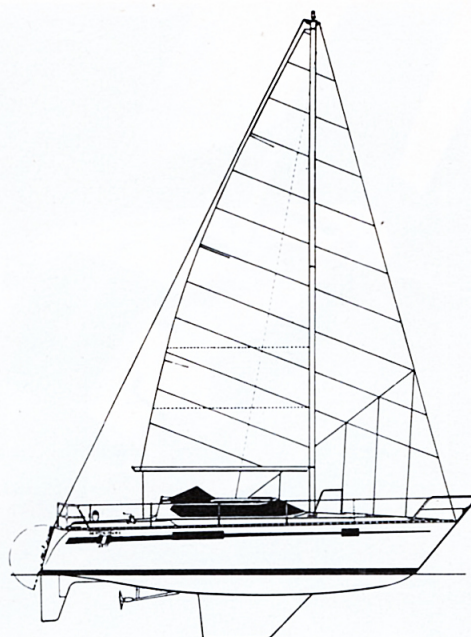
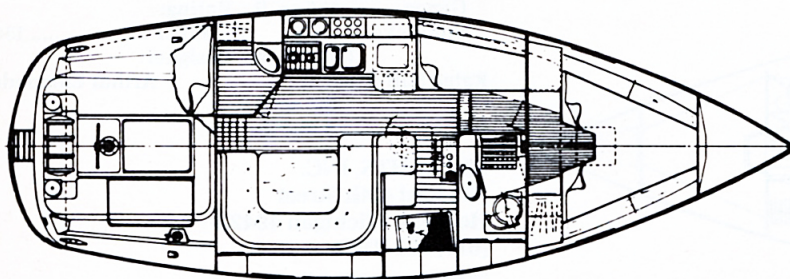
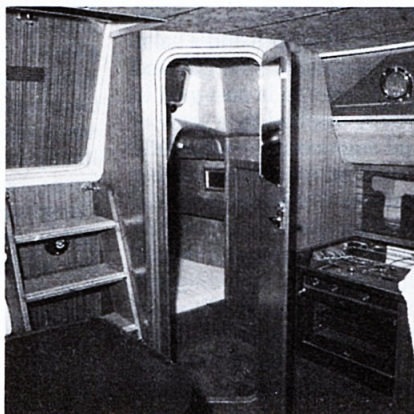
The YACHTING FRANCE 36 MS is a "performance motorsailer" that offers the unique features of good performance, inside/outside steering stations, and a generous and well-organized interior for the cruising sailor. Built to rigorous construction standards by Chantiers Yachting France, she is capable of safe and fast offshore passages, comfortable inshore cruising, and years of trouble-free service.

The YF 36 MS delivers exceptional performance under both sail and power. Her generous sail plan enables the cruising sailor to easily achieve good performance under all conditions. The moderate displacement, combined with the efficient low wetted underbody, ensures good performance under both power and sail. The standard Perkins P4-108 50-HP diesel provides ample reserves of power for comfortable and efficient operations under engine alone.

The benefits of the dual-steering-station concept have been demonstrated for years to European yachtsmen. Now available in North America, the 36 MS and 33 MS can offer the comforts and safety of inside steering to U.S. owners. Being dry, warm, and comfortable under power or sail is now an achievable goal for owners of YACHTING FRANCE MS, 33' to 43'!

The 36 MS's spacious interior layout reflects the continuing emphasis on comfort. The well-apportioned layout rivals those of yachts much larger than her 36'! The beautiful main saloon/galley arrangement ensures real appeal for entertaining or just relaxing. The tri-cabin configuration is ideal for cruising in privacy and comfort with family and friends.

Highly regarded for excellence in engineering and systems installation as well as fiberglass construction techniques, YACHTING FRANCE has provided



outstanding quality control and hardware integration in their "performance motorsailer" line. Other divisions of the extensive YACHTING FRANCE group build such technologically advanced products as submarines, commercial craft, and military patrol boats up to 92' LOA! This unusual depth of engineering, design, and production expertise translates into real capabilities not available to other manufacturers. Combined with the very attractive pricing, extensive standard equipment, and the unique features of the YACHTING FRANCE 36 MS, she offers an exceptional value in today's marketplace.

L.O.A.36'1"	Ballast (iron): 4,343 lbs.
L.O.D.34'0"	Displacement:
L.W.L.28'10"	Fin Keel12,700 lbs.
Beam11'10"	C/B12,900 lbs.
Draft:	Headroom5'9"-6'2"
Fin Keel5'3"	Auxiliary:
C/B3'11"/6'10"	Diesel.....Perkins
Sail Area:	P4-108 FWC
Main290 sq. ft.	HP50
Genoa349 sq. ft.	Fuel Capacity: 52.6 gals.
I41'4"	Water Capacity: 80 gals.
J11'2"	Designer:
P35'5"	Yves Mareschal
E13'10"	

EURO-SAILBOATS LTD.
 141 East Boston Post Road
 Mamaroneck, New York 10543
 (914) 381-4500