

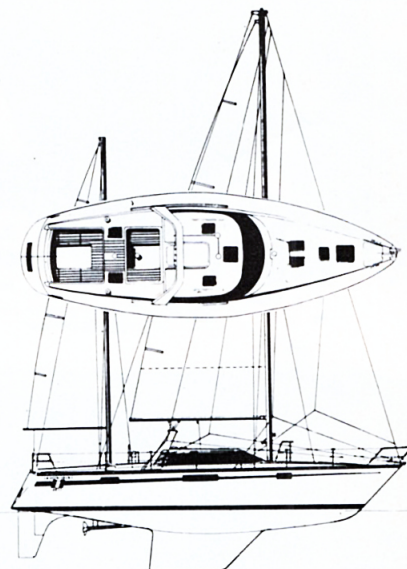
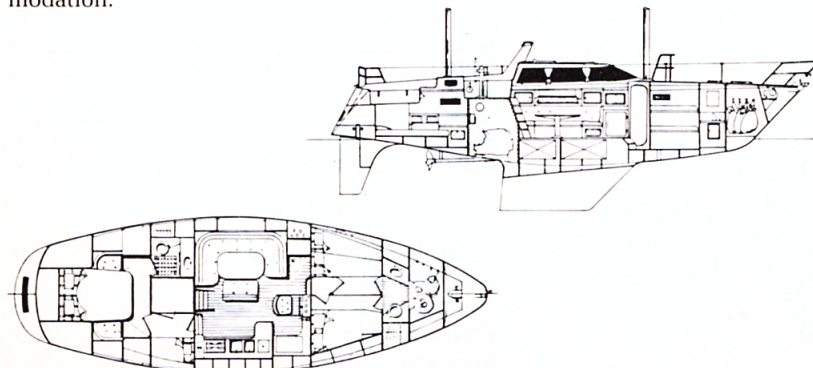
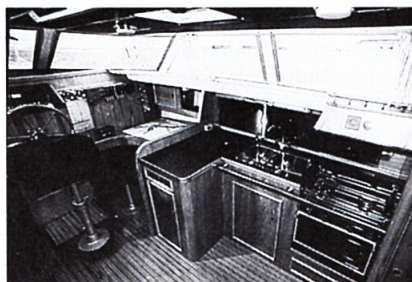
MANUFACTURER'S COMMENT

The YACHTING FRANCE 43 MS is a "performance motorsailer" that offers the unique features of good performance, an easy-to-handle ketch rig, inside/outside steering stations, and a generous and well-organized interior for the cruising sailor. Built to rigorous construction standards by Chantiers Yachting France, she is capable of safe and fast offshore passages, comfortable inshore cruising, and years of trouble-free service.

The YF 43 MS delivers exceptional performance under both sail and power. Her generous sail plan, efficiently organized in a ketch rig, enables the cruising sailor to easily manage a larger boat under all conditions. The moderate displacement, combined with the efficient low wetted underbody, ensures good performance under both power and sail. The standard Perkins 4-154 60-HP diesel provides ample reserves of power for comfortable and efficient operations under engine alone.

The benefits of the dual-steering-station concept have been demonstrated for years to European yachtsmen. Now available in North America, the 43 MS, along with her smaller counterpart, the YACHTING FRANCE 33 MS, can offer the comforts and safety of inside steering to U.S. owners. Being dry, warm, and comfortable under power and sail is now an achievable goal for owners of YACHTING FRANCE MS, 33' to 43'!

The 43 MS's spacious interior layout reflects the continuing emphasis on comfort. The owner's cabin aft rivals those of yachts much larger than her 43'! The beautiful main saloon/galley arrangement ensures real appeal for entertaining or just relaxing. The forward guest cabin is also available with a single large double berth/vanity configuration for an optimum two-couple cruising accommodation.



Highly regarded for excellence in engineering and systems installation as well as fiberglass construction techniques, YACHTING FRANCE has provided outstanding quality control and hardware integration in their "performance motorsailer" line. Other divisions of the extensive YACHTING FRANCE group build such technologically advanced products as submarines, commercial craft, and military patrol boats up to 92' LOA! This unusual depth of engineering, design, and production expertise translates into real capabilities not available to other yacht manufacturers. Combined with the very attractive pricing, extensive standard equipment, and her unique features, the YACHTING FRANCE 43 MS offers an exceptional value in today's marketplace.

L.O.A.	43'2"	Mizzen:	
L.O.D.	42'0"	I.	35'11"
L.W.L.	34'2"	P.	29'6"
Beam	14'0"	E.	8'6"
Draft:		Ballast (iron):	8,048 lbs.
Maximum	6'3"	Displacement:	19,485 lbs.
Shoal	5'0" approx.	Headroom	5'11"-6'5"
Sail Area:		Auxiliary:	
Main	356.7 sq. ft.	Diesel	Perkins
Jib	254.4 sq. ft.		P4-154
Storm Jib ...	88.9 sq. ft.	HP	60
Genoa	588.6 sq. ft.	Fuel Capacity	79 gals.
Mizzen	150.9 sq. ft.	Water Capacity:	184 gals.
Rig Measurements:		Designer:	
Main:			Yves Mareschal
I.	49'10"		
J.	13'7"		
P.	42'10"		
E.	14'1"		

EURO-SAILBOATS LTD.
141 East Boston Post Road
Mamaroneck, New York 10543
(914) 381-4500