

YAMAHA-24MS

YAMAHA ORIGINAL DESIGN



The Yamaha Motor Sailer 24. A Sailing Motorboat with Something for the Whole Family.

This ingenious new concept in small yachts combines the room, speed and versatility of power with the gracefulness, range and economy of sail.

And it does so in a true sailing hull that sleeps five in spacious, teak accented luxury, and 5'7" headroom.

Now the whole family can enjoy many pursuits while cruising, swimming, fishing, scuba diving, gunkholing, snorkeling, sailing, motoring, or just plain bird and fish watching while lolling about at sea or in harbor.

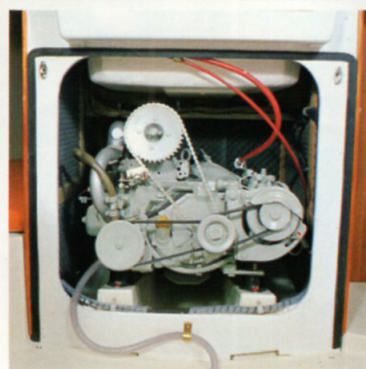
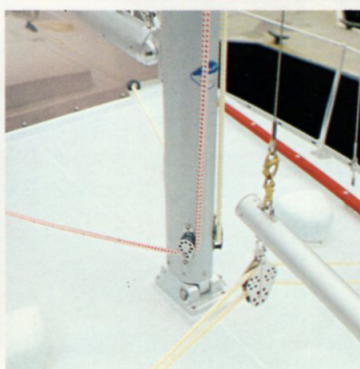
The Yamaha-24MS's efficient, self tacking sloop rig drives her quickly and economically on long cruises and short hops.

And the safe, 8 hp diesel powers through calms, busy anchorages, and difficult waterways that only motorboats can negotiate. And at roughly 30 miles per gallon of inexpensive diesel fuel.

Cruises to harbors previously too distant for weekends are now easily achieved. Just motor out late Friday in the zephyrless calm and snug down in harbor by dawn.

For those who have always yearned for the grace and beauty of sail but felt insufficiently skilled in its subtleties, the Y-24MS is an ideal learner.

Her stiff, self righting hull, large keel and low sail area are easily kept on course and very forgiving to the inexperienced sailor.

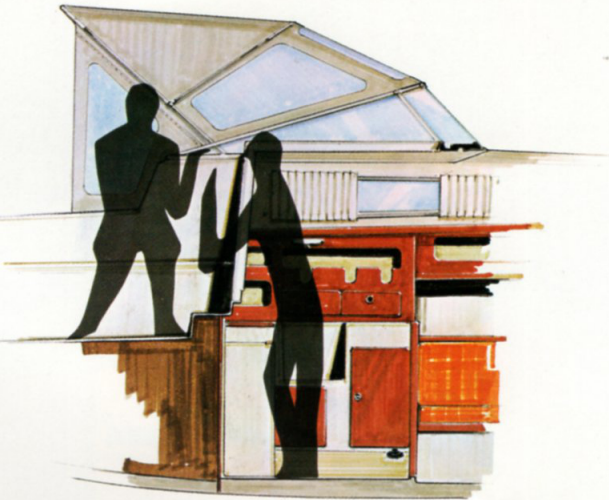


There are no complicated racing gadgets to understand. Just turn the steering wheel and you are on the other tack with no sheets to change or winches to crank.

Many thoughtful details are included to enhance family fun such as swimming platform aft, wide transom opening for fishing and scuba diving, protective windshield to deflect spray from the large cockpit, flush anchor well forward and easy lowering mast for going under bridges and negotiating waterways.

The meticulously detailed and carefully crafted Y-24MS is probably the most versatile little cruising yacht afloat.

YAMAHA — WHEN YOU KNOW HOW THEY ARE BUILT.



*Some items pictured may be optional.

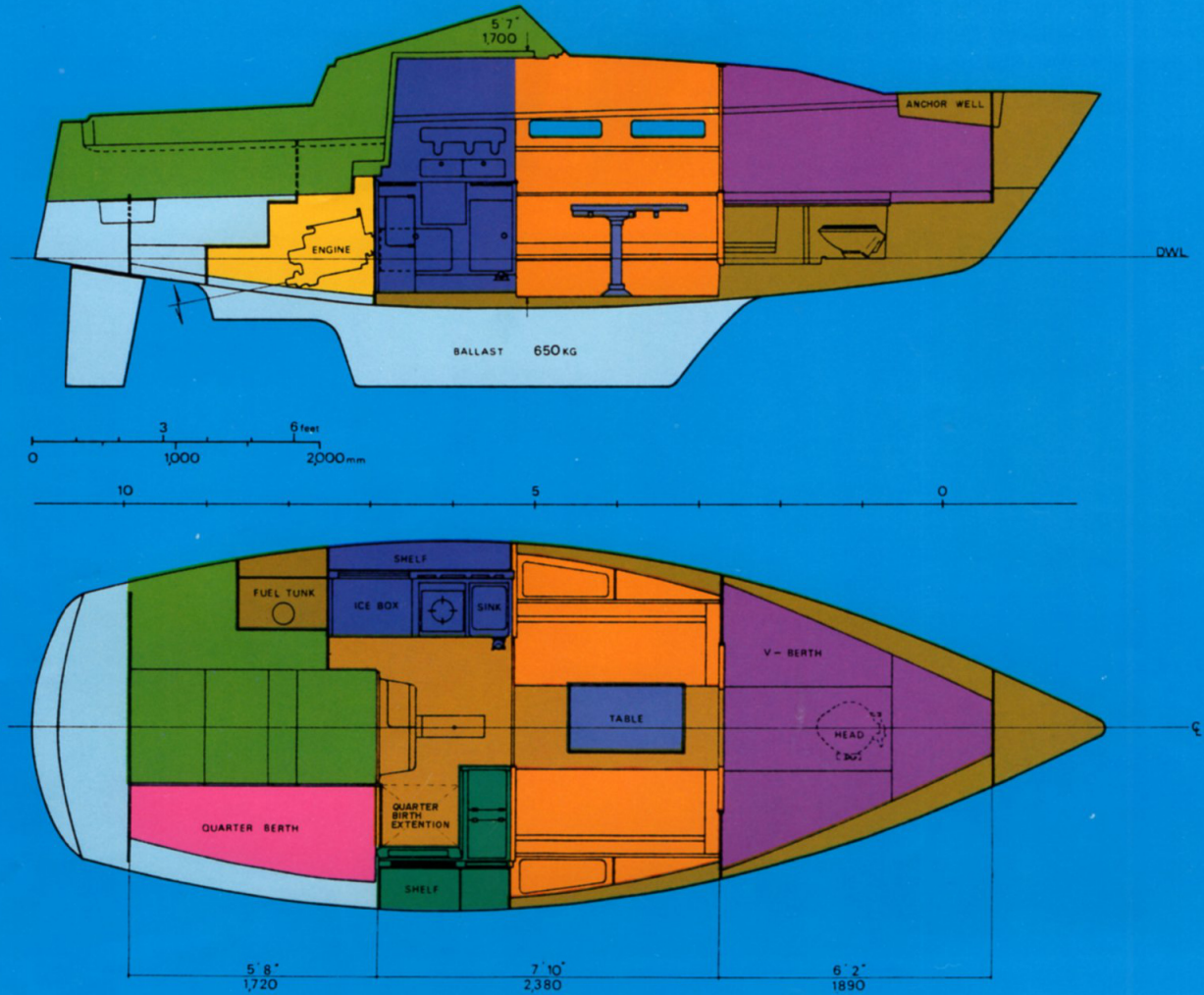
YAMAHA-24MS

PRINCIPAL DIMENSIONS AND SPECIFICATIONS:

L.O.A. 7.42 m (24'4")
 L.W.L. 6.50 m (21'4")
 Beam 2.59 m (8'6")
 Displacement 1,650 kg (3,638 lbs)
 Draft 0.90 m (2'11")
 Ballast 650 kg (1,433 lbs)
 Sail Area (total) . 18.67 sq-m (201 sq-ft)
 Recommended Output 8 hp

Coloring

Hull: Snow white & Navy Blue
 Deck: Snow white



*Specifications subject to change without notice.



YAMAHA MOTOR CORP., U.S.A.
 6620 ORANGETHORPE AVE. BUENA PARK, CALIF. 90620
 LIT-3BT-0201030-79E 54.5 x 5 Printed in Japan