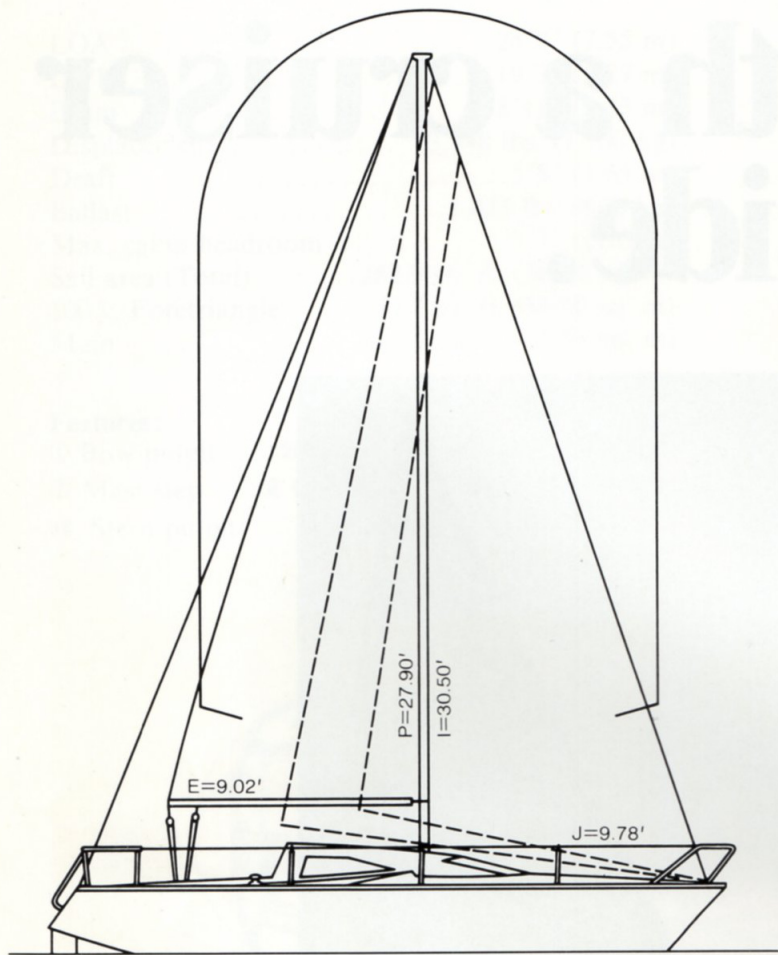


The Yamaha 25II. A racer with a cruiser inside.



Fast enough to win a cup.

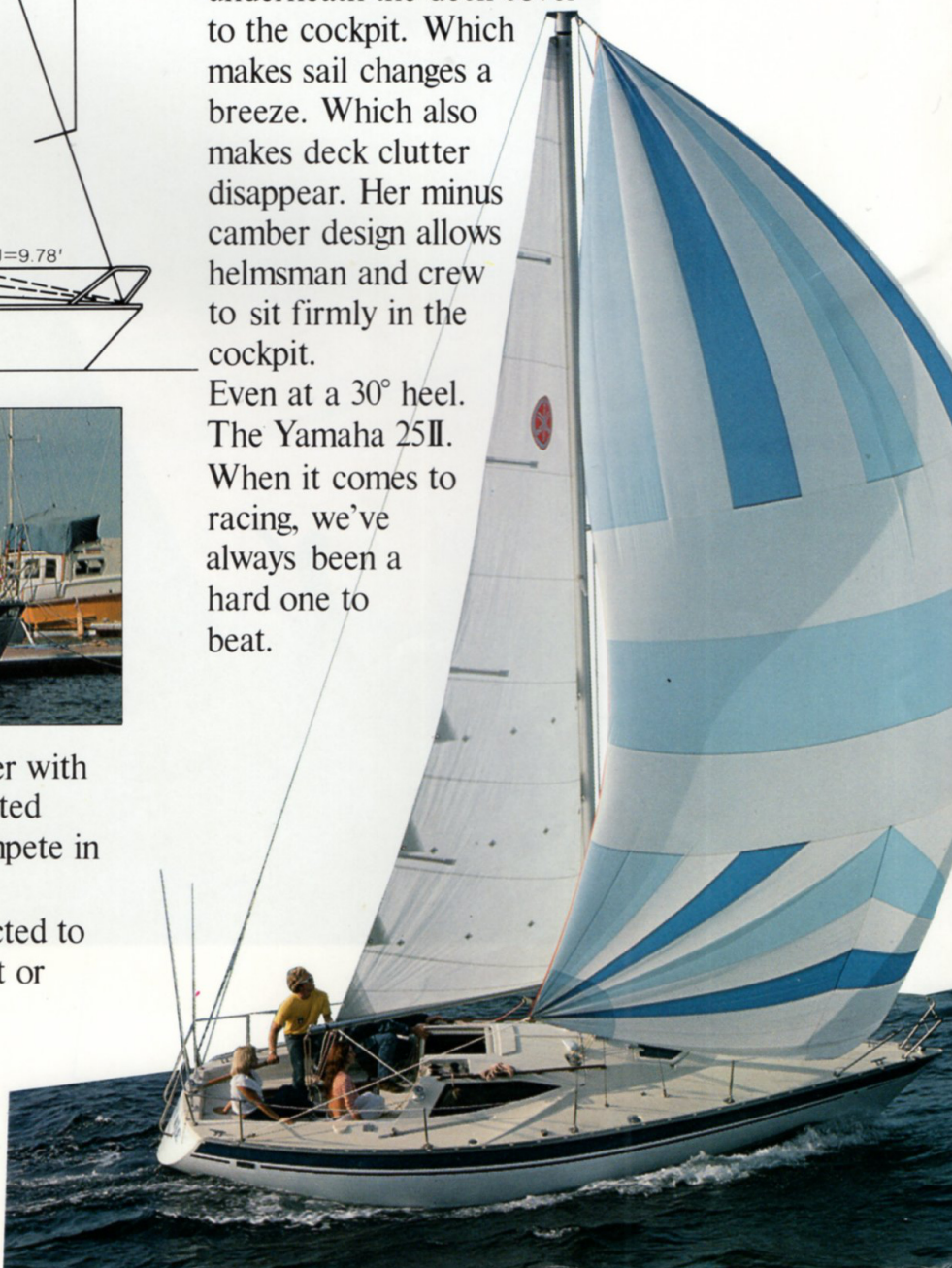
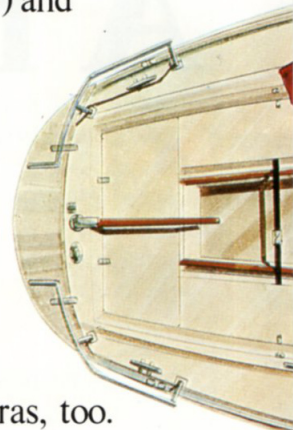


The Yamaha 25II is not just a cruiser with racing pretensions. She's an IOR-rated quarter-ton versatile enough to compete in class, PHRF and offshore racing. Everything is designed and constructed to deliver spirited performance in light or

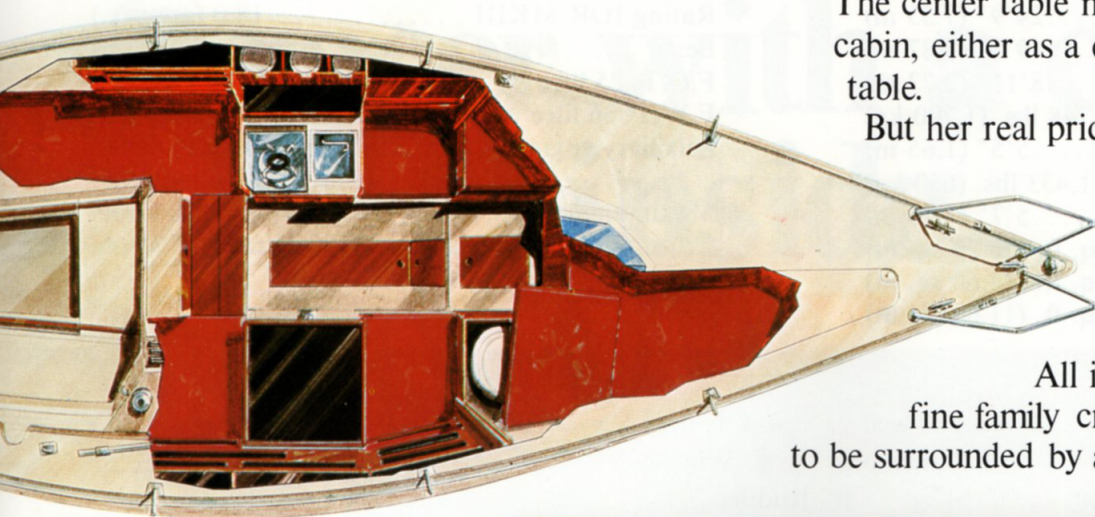
heavy air, thanks to her low-wetted surface, light displacement hull (3,748 lbs.) and large sail plan. In fact, her 282.9 square feet of sail is among the largest in the quarter-ton class. She comes ready to race with internal halyards, an anodized aluminum mast and boom, in-board genoa tracks, stanchions and lifelines, and bow and stern pulpits.

She comes with some unique extras, too. All halyards conveniently pass underneath the deck cover to the cockpit. Which makes sail changes a breeze. Which also makes deck clutter disappear. Her minus camber design allows helmsman and crew to sit firmly in the cockpit.

Even at a 30° heel. The Yamaha 25II. When it comes to racing, we've always been a hard one to beat.



Roomy enough to hold it.



The center table neatly fold out across the cabin, either as a dinner table or as a chart table.

But her real pride and cruising joy is the inboard Yanmar 8 HP diesel engine.

A rarity on boats her size.

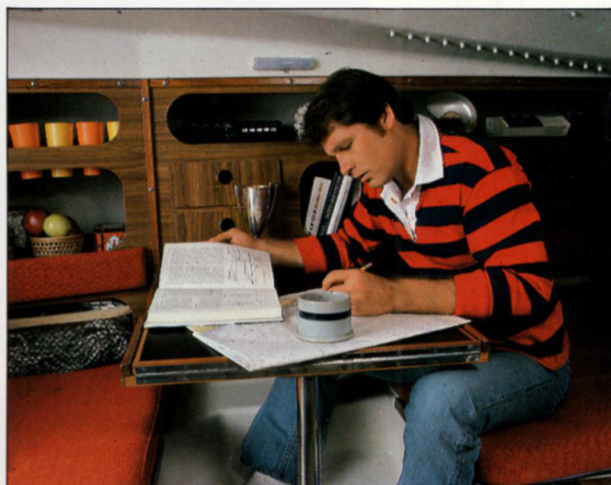
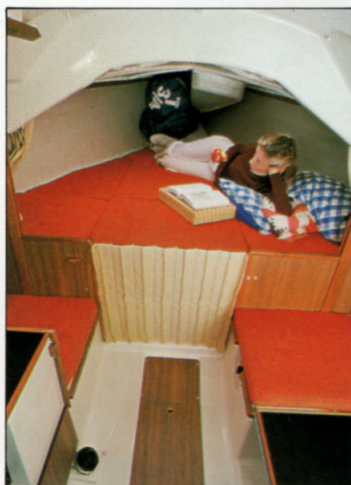
And a necessity when you can't depend on your sails.

All in all, the Yamaha 25II is a fine family cruiser. That just so happens to be surrounded by an equally fine family racer.

When we built the Yamaha 25II as a high performance racer, we didn't sacrifice cruising comfort.

We constructed and designed our boat to function as a family cruiser, whether you're out for a casual day-sail, an overnight offshore race or an extended cruise. The 8'11" beam and 5'7" headroom, give you more living space than you'll find on most 25 footers. The teak accented interior, the colorful cushions and the large cabin windows create an interior so spacious, light and airy, you'll never know the constraints of a racer again.

The more-than-functional galley features a stainless steel sink, ice box, fresh water pump and stove base.



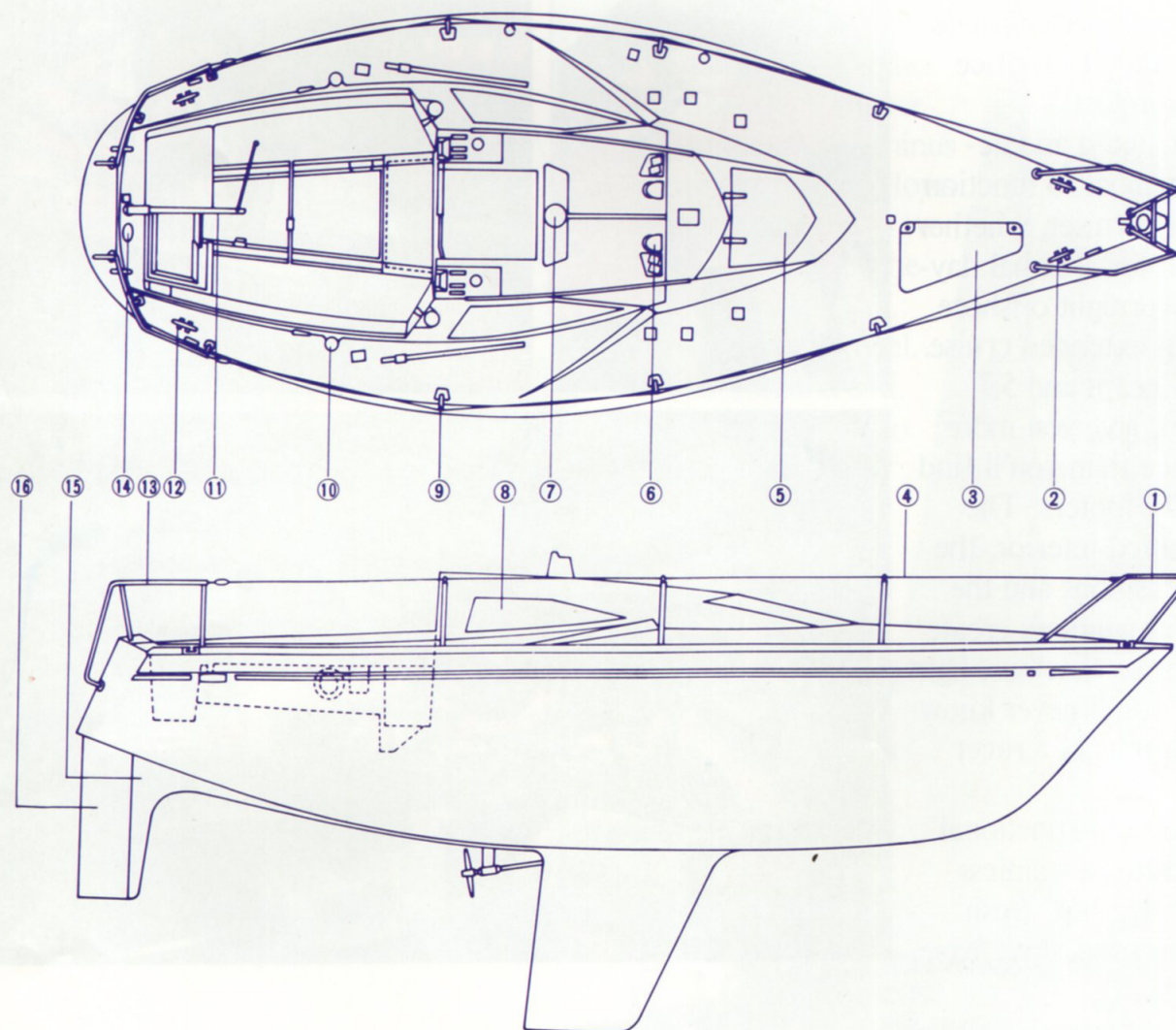
Specifications to back it up.

LOA24'9" (7.55 m)
 LWL19'3" (5.87 m)
 Beam8'11" (2.73 m)
 Displacement3,748 lbs. (1,700 kg)
 Draft5'5" (1.65 m)
 Ballast1,433 lbs. (650 kg)
 Max. cabin headroom5'7" (1.70 m)
 Sail area (Total)282.9 sq. ft. (26.29 sq. m)
 100% Foretriangle157.1 sq. ft. (14.60 sq. m)
 Main125.8 sq. ft. (11.69 sq. m)

Rating IOR MKIII18.0 (approx.)
 Berth5 persons
 F.O.T. 25 litre6.6 gal.
 F.W.T. 36 litre9.5 gal.
 Auxiliary engineYanmar 8 HP diesel
(with 420W alternator)
 Maximum speed6 knots
 Cruising range240 km (130 N/miles)/5 knots

Features:

- | | | | | | |
|----------------|-----------------|---------------|--------------|-----------------|----------------|
| ① Bow pulpit | ② Bow cleats | ③ Anchor well | ④ Life lines | ⑤ Forward hatch | ⑥ Ventilators |
| ⑦ Mast step | ⑧ Cabin windows | ⑨ Stanchions | ⑩ Winches | ⑪ Tiller | ⑫ Stern cleats |
| ⑬ Stern pulpit | ⑭ Stern light | ⑮ Skeg | ⑯ Rudder | | |



YAMAHA

When you know how they're built.