

# YAMAHA-33

YAMAHA ORIGINAL DESIGN





## The YAMAHA-33.

A competition-proved, all-around 3/4 tonner, a beautiful racer/cruiser of new design concept.

Light airs? The YAMAHA-33 has the sail area to make the most of every breath of air. And the relatively narrow beam at the waterline and light displacement help too.

In fresh breeze, the YAMAHA-33 has the long waterline and wide overall beam for maximum acceleration. Her round bilges and vee sections make her sea-kindly.

Here high aspect rig and ballast keel give her excellent beating performance.

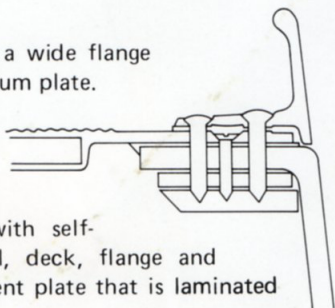
Everything on deck is carefully arranged so that the YAMAHA-33 can be well handled with the minimum crew whether you are racing or cruising.

Neath the deck, the YAMAHA-33 is basically designed with a 2 meter module, i.e., 2 meters headroom and 2 meters berths. Accomodation is versatile, great for weekend relaxation in the harbor, family cruising and also highly competitive racing.

All in the crew, or all in the family, the YAMAHA-33 takes everything in stride.

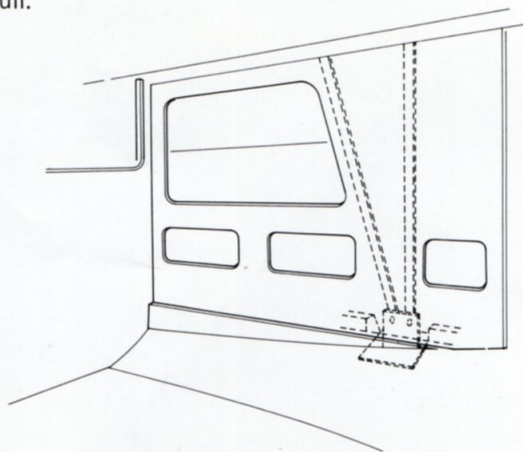
### HULL-DECK JOINT

Every YAMAHA-33 hull has a wide flange reinforced with anodized aluminum plate. The deck fits over this flange. Liberal application of Cab-O-Sil type glue assures absolute watertight integrity. Then the aluminum toerail is secured with self-tapping screws through toerail, deck, flange and into the aluminum reinforcement plate that is laminated to the flange.



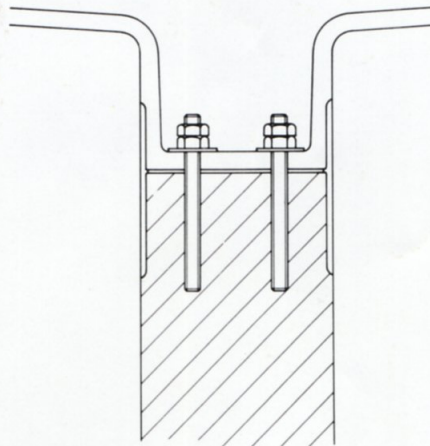
### CHAINPLATES

The chainplates for the shroud are secured to the longitudinal bulkheads of the pilot berths all the way down to the hull. And they are secured to brackets which are laminated to the hull.



### BALLAST KEEL

The standard ballast keel is of cast iron. The lead keel is also available as an option. The keel is secured to the hull by nine keel bolts which are tapped into the keel. The outside joint is then thoroughly laminated with woven roving, faired and gel-coated.





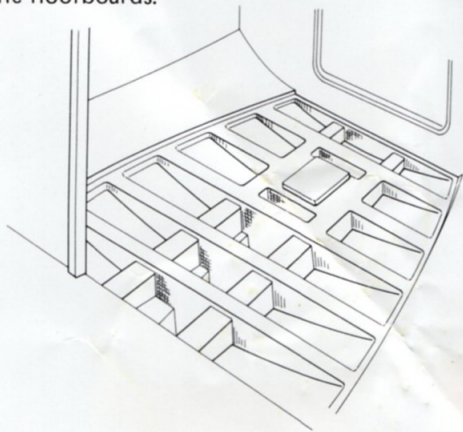
A yacht that brings out your fighting spirit . . .  
and lets you completely relax.  
The **YAMAHA-33** fits her moods to yours.





## HULL REINFORCEMENT

Strains on the hull coming from the ballast keel are countered with hat-section floors and longitudinals, which are a part of the hull liner, and are laminated to the hull. Engine controls and exhaust are led through these longitudinal sections beneath the floorboards.



## WIRING

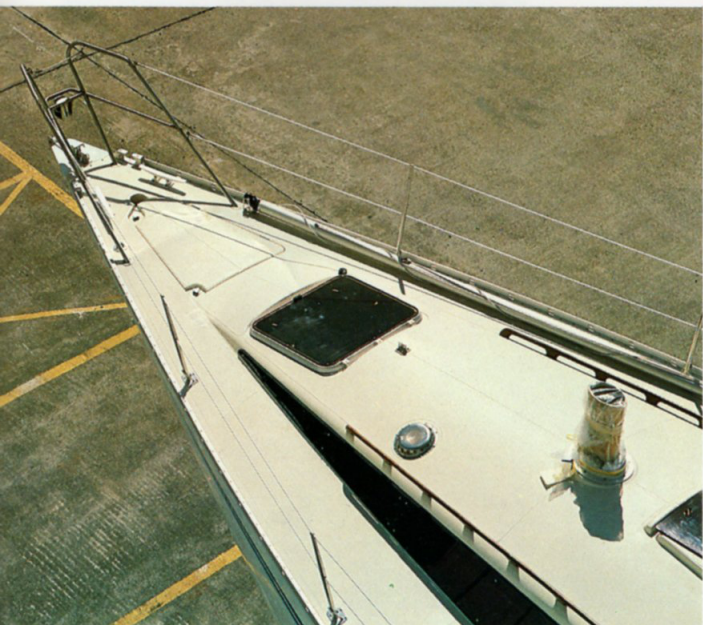
The wiring in your YAMAHA-33 is accessible by merely removing the headliners. In certain parts, wiring is led through PVC tubing to protect it. There are also four junction boxes for ease of inspection and maintenance.

## EXTERIOR

The self-draining anchor well in the foredeck will hold up to 20 kg (44 lbs) of Yamaha designed anchor, chain and rode. The forward hatch is 650mm x 700mm (24" x 27") making it easy to stow and bring sails out.

The ventilators on the cabin top are of a Dorade-type construction. The sea hood over the deck works as a Dorade box to prevent the spray.

The mast is through-deck and stepped on the keel. All halyards are internal and led under the sea hood to the cockpit keeping the deck uncluttered. Three reef lines are rigged onto the boom for slab-reefing. A boom topping lift is also rigged.



The winches on the YAMAHA-33 are of the best quality. #27 Barlows or #43 Lewmars for the Jib sheets, #18 Barlows or #16 Lewmars for the halyards, and 23 Barlows or #25 Lewmars for the spinnaker sheets. All of these winches are 2-speed. The winches for the slab reefing system are ROMs or #15 Lewmars. (Winches may vary in different countries and are subject to change.)

The cockpit arrangement is efficient, reflecting YAMAHA's years of experience in highly competitive yacht racing. All halyards and sheets lead to the cockpit and the winches are mounted close at hand. The YAMAHA-33 can be raced or cruised with a minimum crew.

The cockpit seats have toerails incorporated at the edges. Several holes in the toerail facilitate attaching of safety harness lines for crew safety while working in the cockpit in heavy weather.



The YAMAHA-33 comes with a standard manual bilge pump. An electric bilge pump may be ordered optionally.

## INTERIOR

In port, the settee berths and fold-up table give YAMAHA-33 every comfort of home.

In a race, the table may be removed and secured to the bulkhead out of the way, and the settee pipe berths can be folded back out of the way as well. This gives you plenty of room to break out or stow headsails such as the genoa and spinnaker.

The forward double V-berth is well lighted through the translucent forward hatch. The quarter berth is on port side. Pilot berths on both sides give secure sleeping with canvas bunk-cloths. Both pilot berths and quarter berth have canvas liners to keep the sleepers from hitting the hull side at a heel. The off watch can always get their rest in a YAMAHA-33.







The head is situated just forward of the main cabin. Privacy is insured by a door from main cabin and by a curtain from the fo'c's'le. The optional shower sump under the teak grating gives the YAMAHA-33 the sanitation facilities of a much larger boat. The optional electric bilge pump drains the shower sump as well as the bilge.

The galley will be the first mate's pride and joy. Complete with two deep sinks, ice box, two foot pumps (one for fresh water, one for sea water), space for three burner stove with oven, and plenty of shelving and storage space. Pressure water system is also available as option with or without a water heater incorporated.



A flexible reading light illuminates the big 910mm x 800mm (36" x 31.5") chart table. There are shelves for radios and navigation books plus four drawers. The molded wooden seat holds the navigator securely at a heel.



A big storage space for large items is located under the cockpit sole, accessible from the quarter berth. The oilskin locker is under the companionway ladder. A hanging locker is on starboard side of the head.



The engine is located beneath the V-berth in the fo'c's'le. This location is advantageous from a balance point of view as well as the favorable rating it gets from IOR rules. The engine bed and battery cases are one-piece FRP molded to make the best one of the available space.





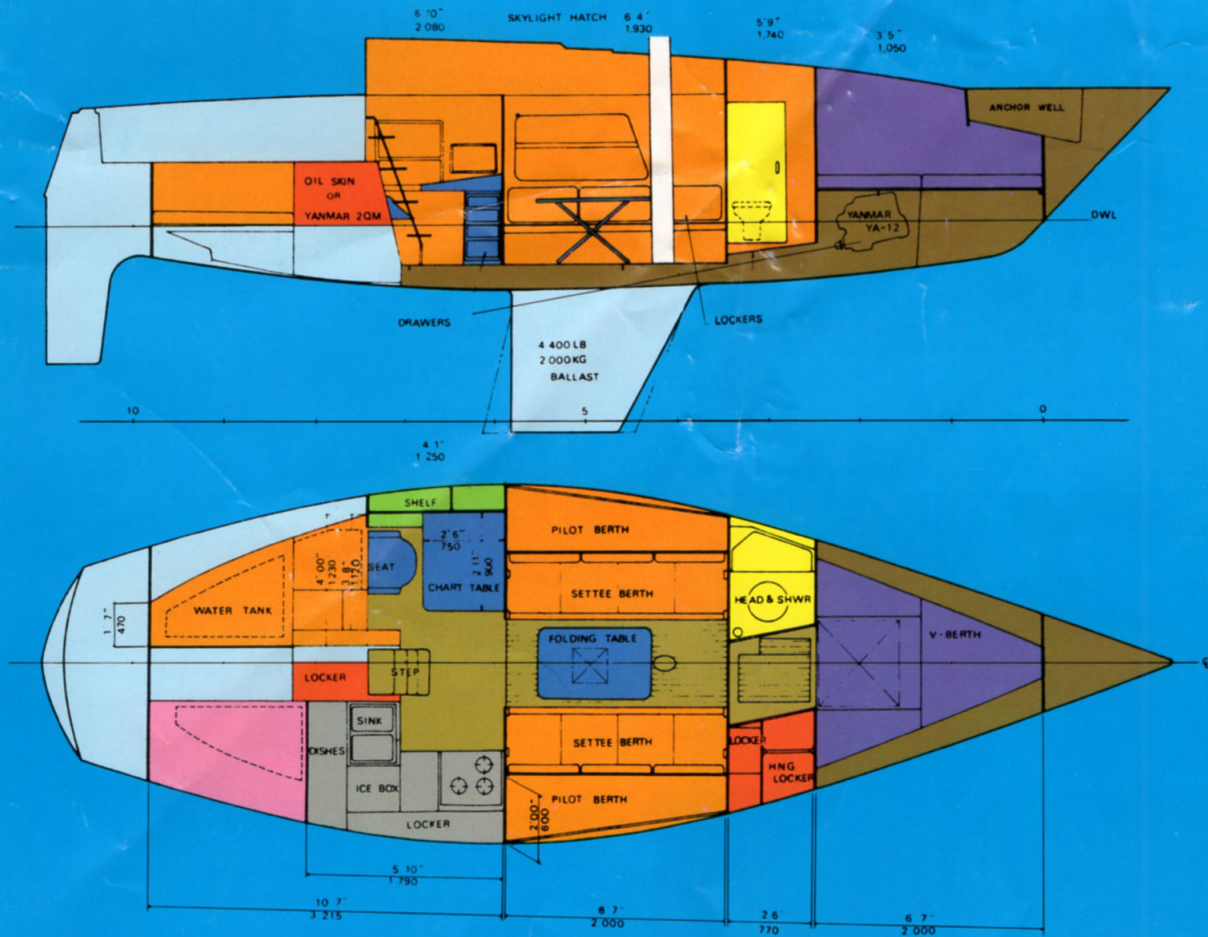
# YAMAHA-33

## SPECIFICATIONS

L.O.A..... 10.17m (33'5")  
L.W.L..... 8.20m (26'11")  
Beam..... 3.35m (11'0")  
Displacement..... 4,400 kg (9,700 lbs)  
Ballast..... 2,000 kg (4,410 lbs)  
Draft..... 1.90m (6'2")  
Sail Area (Total)..... 45.7 sq.m (492 sq.ft.)  
Engine..... Yanmar diesel YSM12  
(12HP/3,000 rpm)

## COLORING

Hull: Snow White & navy blue  
Deck: Light Ivory & nava blue



Specifications subject to change without prior notice.



**YAMAHA**

SINCE 1887 **YAMAHA MOTOR CO., LTD.**  
HEAD OFFICE: 2500 SHINGAI WATA SHI SHIZUOKA-KEN JAPAN  
BOAT DIVISION: 3380 MUKOJIMA ARAI-MACHI HAMANA-GUN  
SHIZUOKA-KEN JAPAN

3BT-0201032-79E 54.01x10 Printed in Japan