

YANKEE



SEAHORSE

**TRAILER-LAUNCHABLE
OCEAN RACING/CRUISER**



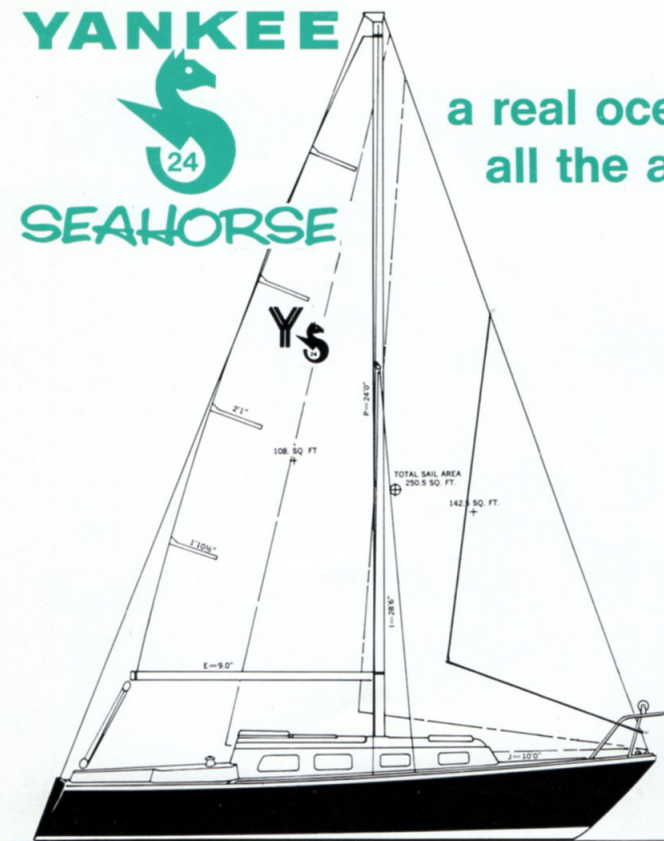
YANKEE

SEA HORSE

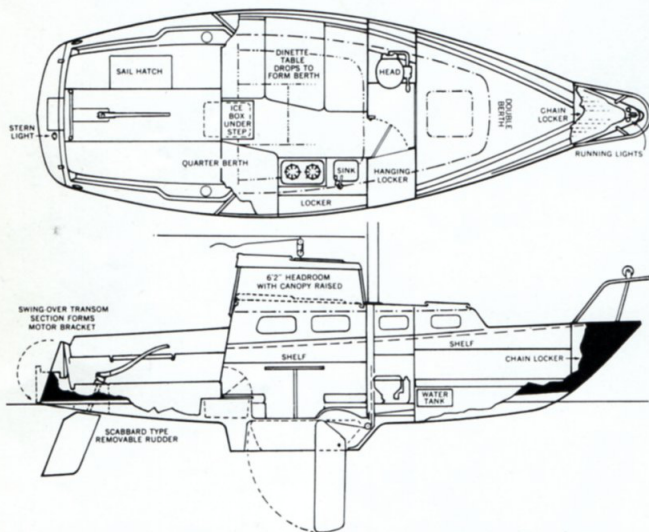
a real ocean racing/cruising 24 footer with
all the advantages of complete portability

Designed by Robert Finch, exclusively for Yankee Yachts, to meet the requirements of the yachtsman who demands the traditional Yankee quality in a trailer-launchable, blue water, racing/cruising 24. Built with the same sound craftsmanship and detail made famous by the Yankee Dolphin and Yankee 30.

A high aspect sailplan, self-righting, high ballast/displacement ratio sloop with full headliner, full hull liner, dinette, enclosed head and elevating cabin top providing 6'2" headroom, the brand new Yankee SeaHorse offers unbelievable quality in a trailable 24'!



l.o.a. 23'9" / l.w.l. 20'0" / beam 7'10 3/4"
draft (retractable keel) board up 1'8"; down 4'8" / sail area 250.5 sq. ft.



SeaHorse is a full sized ocean-going 24 with large sail plan capability yet conveniently trailable providing maximum flexibility of use and storage.

Well engineered, on-the-boat hardware makes it easy to rig the SeaHorse on the trailer or afloat

Everything needed for raising or lowering the mast is always on board and with a few simple steps SeaHorse is ready to sail ... duck under a bridge ... or head for home.

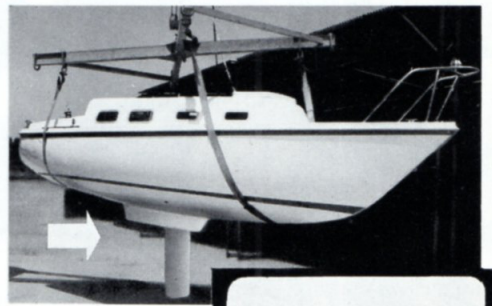
With built-in steadying gear, removable mast roller on the standard bow pulpit and the heavy duty cast mast hinge, the SeaHorse is rigged quickly and easily by using the boom as a powerful level and the main-sheet, backstay and sheet winch as lifting tackle.

... and the same easy steps give you access to many restricted clearance waterways

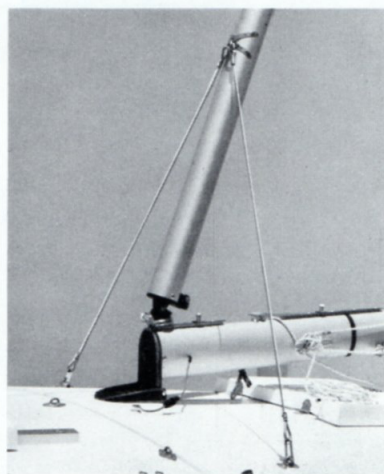
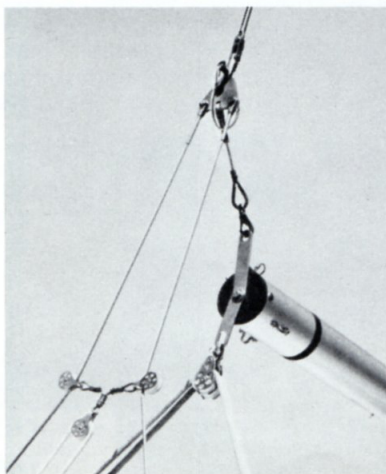
... trailability plus built-in stability!

A 600lb. lead filled stub keel and 200lb. lead and fiberglass centerboard give SeaHorse great stability and self-righting characteristics.

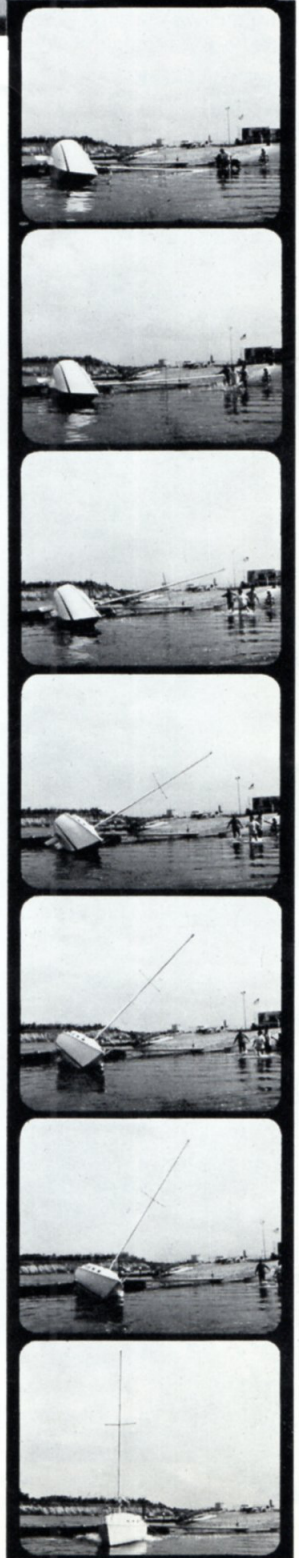
Excerpt from film of tests shows, that even with centerboard fully retracted, SeaHorse snaps quickly upright from a full knockdown position.



Mast in position to raise with heavy cast hinge already pinned, gooseneck attached to heel track and steady wires fastened.



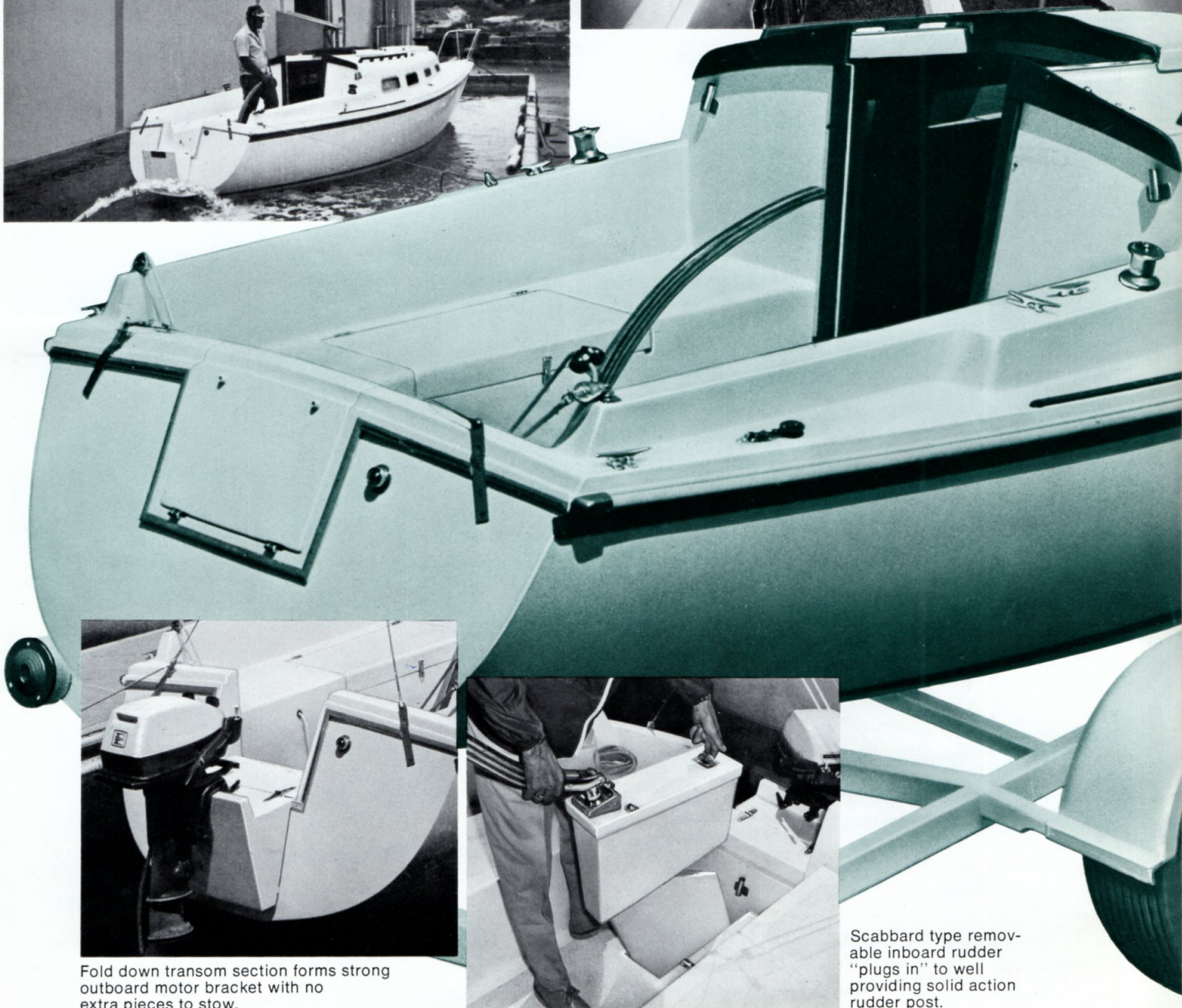
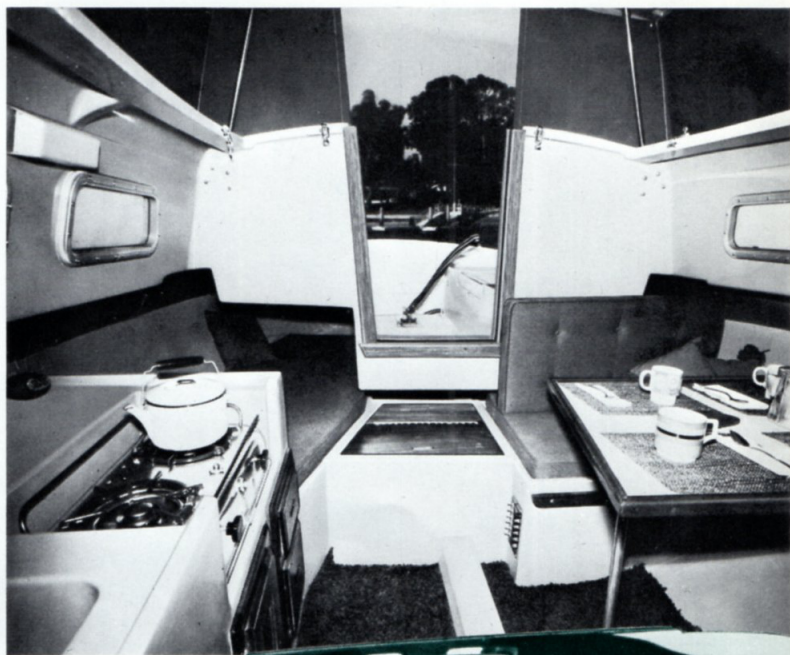
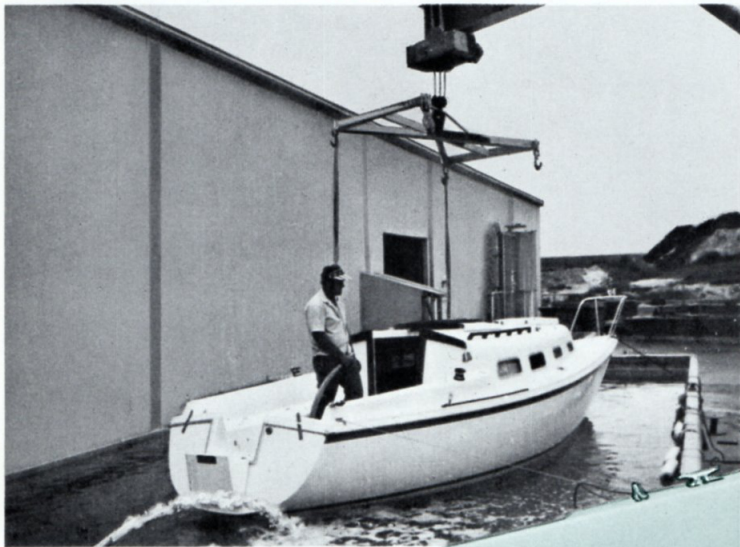
Backstay hardware with quick release pin and simple backstay tackle which eliminates the need for resetting turnbuckle adjustment each time mast is set.



Yankee Yachts' famous fine craftsmanship brings below-deck luxury to the trailable 24 footer

Full molded fiberglass headliner and hull liner with typical Yankee Yachts craftsmanship in lavish mahogany trim below decks gives the SeaHorse a handsome low maintenance interior. Enclosed head, ample storage and counter space, convertible dinette provide true luxury in 24'.

Every Yankee Yachts hull undergoes a water test in the company test tank.



Fold down transom section forms strong outboard motor bracket with no extra pieces to stow.

Scabbard type removable inboard rudder "plugs in" to well providing solid action rudder post.



Lifting the "pop-top" provides full 6'2" headroom. Optional acrilan side curtains shown make a comfortable, roomy cabin in all weather.



... and ALL these quality features are STANDARD on the SeaHorse

- 600 lbs. internal lead ballast keel plus 200 lbs. lead in solid fiberglass retractable keel. Total ballast 800 lbs.
- Hull is 100% hand lay-up molded fiberglass with molded in contrasting boot top stripe.
- Full interior fiberglass headliner and hull-liner for beauty and insulation from noise and condensation.
- Pop Top — unique design of the 5' x 5' "Pop Top" affords full 6'2" standing head room in the main cabin without compromising seaworthiness in any way. All hardware for use of the Pop Top is supplied as Standard Equipment including stainless steel supports and lifting sling and chrome hold-down clamps. Acrilan side curtains as shown in brochure can be found in the Optional Equipment List.
- Fold down fiberglass outboard engine bracket built into transom for easy motoring.
- All interior cushions in high quality foam rubber upholstered in "Bolta Flex" expanded vinyl.
- Teak trim on companionway.
- Varnished mahogany bulkheads and interior trim.
- Mahogany hanging locker with shelf over.
- Convertible dinette with table of formica with mahogany trim.
- Dinette seats molded with storage compartments underneath.
- Molded in double forward berth with storage under.
- Eight standard port lights (windows).
- All through-hulls fitted with valves.
- Galley with 13 gallon water tank, sink, pump, ice box, and stove compartment.
- Two mahogany drawers and two lockers with mahogany doors in galley.
- 7' quarter berth.

PLUS this fine STANDARD equipment

- Dacron mainsail and jib.
- Two Seaboard No. 7205 double action sheet winches with handle.
- Bow pulpit, mast carrier, all gear for shorthanded or singlehanded raising and lowering of mast.
- Aluminum mast and boom, clear anodized, custom elliptical shape with one piece stainless steel sail track, and spring loaded roller reefing.
- Stainless steel standing rigging.
- Dacron running rigging including jib sheets and mainsheet.
- Stainless steel chain plates, stemhead fittings, turnbuckles and toggles.
- Marinium, chrome, or stainless steel hardware including three mooring cleats, two jib sheet cleats and mainsheet cam-cleat.
- Deluxe custom outhaul for mainsail. Single handed operation — 18" adjustment.



Centerboard winch with removable handle mounted on enclosed head bulkhead out of the way yet readily accessible.

**Yankee Yachts
builds a lot of boat
into 24 feet!**



Available Optional Accessories for the Yankee SeaHorse in the same exceptional quality as the standard equipment

- Contrasting color on non-skid
- Fabric cushions (in place of standard vinyl)
- Cockpit cushions
- Stove: Two burner pressure alcohol Homstrand model 126 or Homstrand deluxe model 205
- Carpet — Rubber backed nylon
- Marine head installation with quick throw valves.
- Self-contained Handihead
- Deck fitting for Handihead pump out
- Plastic coated shrouds
- Sheer stripe (choice of color)
- Lewmar No. 8 chrome sheet winches (2) with one handle in place of standard Seaboard Marine winches
- Mast mounted halyard winch: Seaboard Marine 313 or Lewmar No. 8
- Extra handle: Seaboard Marine or Lewmar
- Electrical system
- Chart dinette table (in place of standard table)
- Teak handrails
- Teak cockpit grate
- Masthead wind indicator
- Geared roller reefing
- Bilge pump — diaphragm (Guzzler)
- Genoa gear
- Lifelines and stanchions
- Spinnaker gear
- Trail-Rite Trailer — lights, surge brakes and launching and retrieving winch
- 10' Extendable tongue for trailer
- 150% Genoa — 3.85 oz. Dacron
- Spinnaker — ¾ oz. Nylon
- Drifter — 1.5 oz. Nylon
- Seahorse sail cover — Acrilan
- "Pop Top" side curtains (full enclosure) — Acrilan

NOTE: Equipment shown in pictures in brochure is typical, but not necessarily standard, Check specifications and standard equipment and options list. Prices and Specifications Subject to Change Without Notice.



2724 SOUTH GRAND AVENUE
SANTA ANA, CALIFORNIA 92705 • Phone (714) 557-9955

DEALER: