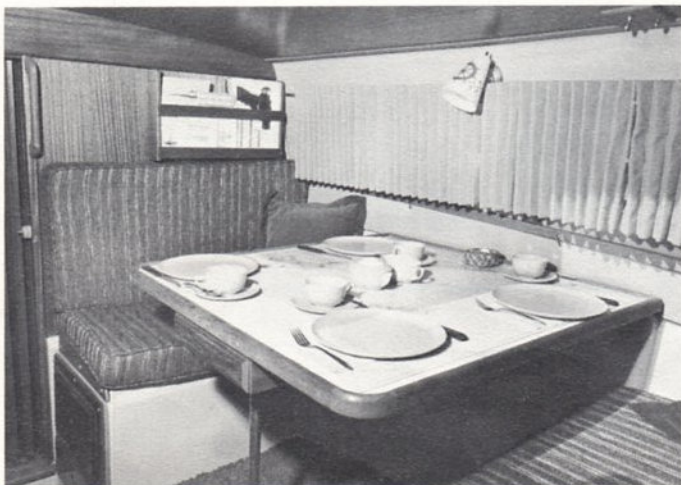
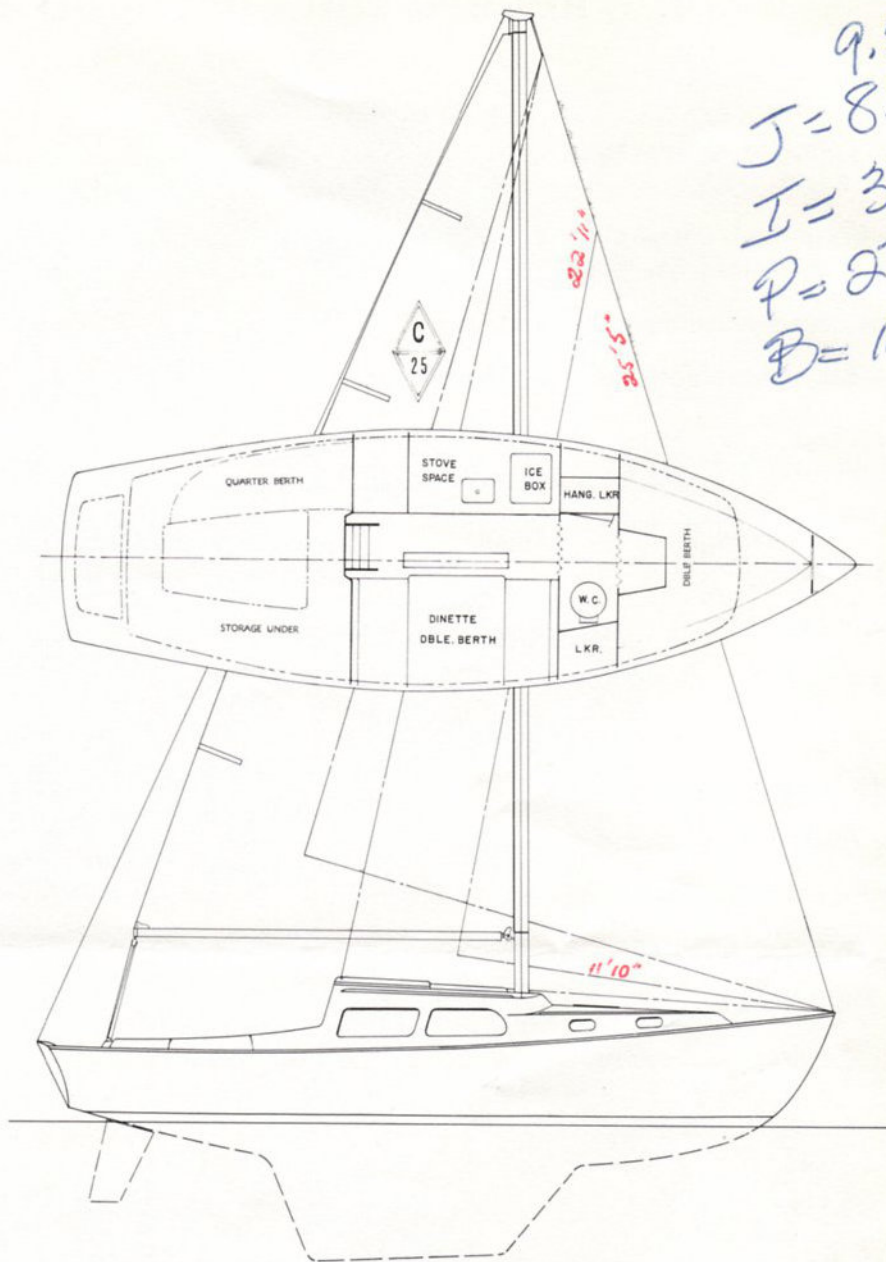


CORONADO 25 SPECIFICATIONS

Length overall25' 0"
 Length, waterline20' 0"
 Headroom5' 6"
 Beam8' 0"
 Draft3' 8"
 Displacement4300 lbs.
 Ballast2150 lbs.
 C.C.A. Rating (Est.)19.9
 Main sail163 sq. ft.
 Jib, working136 sq. ft.

9.5' or
J = 8.92
I = 3.33
P = 27.75
B = 11.9



Main cabin, dinette, looking to starboard from quarter berth.



Main cabin, looking aft from forward compartment.

OUTSTANDING FEATURES OF THE CORONADO 25

Accommodations: Sleeps 5. Two double berths, one quarter berth. Enclosed head. 16 gallon water tank. Complete galley. Hanging locker. Four-place dinette table.

Hull: Double-layered, one-piece hull and one-piece inner liner, molded fiberglass.

Deck: One-piece molded fiberglass. Non-skid.

Mast and Boom: Aluminum alloy, with hinged mast step.

Standing Rigging: Stainless steel.

Running Rigging: Braided dacron.

Turnbuckles: Bronze.

Chain Plates: Bronze.

Hardware: Bronze and stainless.

Ballast: Lead.

Bulkheads: Marine mahogany.

Thru-hull Fittings: Flush-mounted with shut-off valves.

Outboard Provision: Self bailing well.



CORONADO YACHTS

8211 Lankershim Boulevard
North Hollywood, California 91605
Phone (213) 875-1175

DEMONSTRATED AND SOLD BY

The Coronado is available ready to sail or in kit form.

Don't miss the boat . . .



CORONADO 25

Welcome aboard the Coronado 25

... the 25 footer with the big boat features!

A sailing man's dream and his first mate's delight, the Coronado 25 is bred for racing and gentled for cruising. Its sleek hull, up-to-the-minute spade rudder, and masthead sail plan offer the racing skipper ample challenge and speed to match any other comparable boat afloat. And its complete, roomy, convenient cruising accommodations surpass those of many 28 to 30 foot yachts.

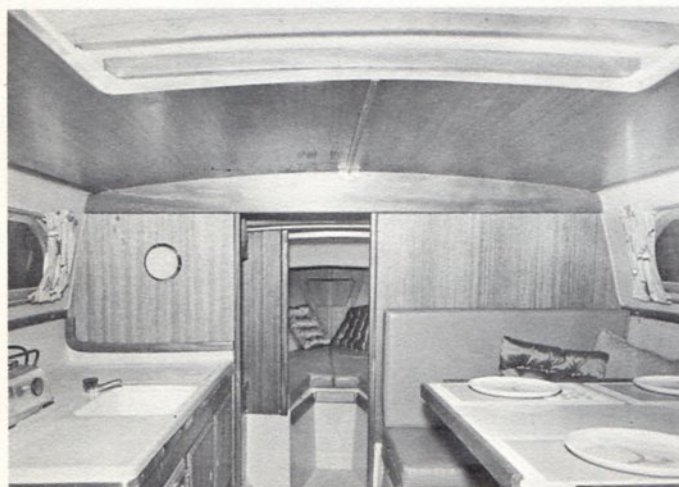
Construction is of all woven roving fiberglass in three parts: the hull with integral keel, a liner inside the hull, and the deck and cabin. The liner not only provides a double-layered hull for extra strength and safety, but it forms the basic interior structure for berths, lockers, head, etc.

The interior features sleeping accommodations for five; a large galley with sink, ice box, cabinets, and drawers; an enclosed head; a dinette which seats four and converts into a double berth; a built-in water tank; a hanging locker; and 5'6" standing head room in the main cabin.

In addition to seating six adults comfortably, the self-bailing cockpit still allows easy single-handling. A large self-bailing lazarette furnishes more stowage space and an outboard well. The well will take a motor large enough to drive the boat at hull speed, and positively will not ship water due to its unique design for which a patent is pending.

For performance ask the skippers of boats who have sailed against the Coronado 25. For seaworthiness ask those who have sailed her in all kinds of weather. For spaciousness and cruising comfort, step aboard her. And for beauty, well, just look at her!

Over 500 Coronados sold in the first 2 years of production.



Interior, looking forward from main hatch.



Main cabin, galley, looking to port from dinette.