



Original Sail Specifications

- **Mainsail (Lee Sails)** has three sets of reefing points, (4) partial battens, webbing through grommets to attach slugs to foot and slides to luff.

* The lower two sets of reefing points are reefed by the double single line reefing built into the boom.

* lower reef points are centered 4' 4 1/2" above the bottom of the foot bolt rope.

* middle reef points are centered 4' 3" above the lower reef points.

* upper reef points are centered 6' 0" above the middle reef points.

- **Staysail (Lee Sails #117101)** is loose footed on a boom and is piston hanked (bronze hanks) to staysail stay. Lower 10 feet of staysail has jackline to attach to staysail stay. At each hank, the jackline is fed through two thimbles that are seized to two grommets. Luff wire is stainless steel wire with white vinyl covering and is secured to a grommet at each end. The luff is protected from chafe with leather at each hank, as well as at the thimbles at head and clew. The sail is triple stitched.

Sail	Luff	Leech	Foot	Area
Mailsail	37'-4" (verified 37'-2")	38'-11"	15'-2"	283 sf
Yankee	35'-1"	26'-2"	15'-7"	188 sf
Staysail	27'-7"	24'-1"	10'-4"	124 sf
Genoa (RF)				340 sf
Cruising				
Spinnaker				

New Sail Specifications

NOTE: Obtain off cuts of new sails plus spool of thread for future patching

Mainsail Specs:

- Reinforce for double single line reefing at two lower sets of reefing points
 - ~Include a third row of reefing
 - ~two-layer reef diamond patches; reefs included with tie points
- The lower two sets of reefing points are reefed by the double single line reefing built into the boom.
 - ~lower reef points are centered 4' 4 1/2" above the bottom of the foot bolt rope.
 - ~middle reef points are centered 4' 3" above the lower reef points.
 - ~upper reef points are centered 6' 0" above the middle reef points.
- (2) full battens at top and partial battens at bottom - fiberglass battens
 - ~Flat battens and stoutly constructed platform pockets - webbing reinforcement inside the inboard end of pockets - double Velcro flap pocket closures at leech.
 - ~Full battens with batten-end receptacle with an articulating, integrally attached sail slide
- 2-ply leech
- Heavy duty leech line (leech cord adjustment at the third reef position)
 - ~Leech line with cleat position just above each reef point (arrange so that when the main is full-up, a single pull from the bottom adjustment position will clear all the higher cleats)
 - ~Leech line with exit at reef clew
- Ultra-high-molecular-weight (UHMW) plastic internal Slides (luff) and Slugs (foot) with nylon webbing to grommets
- Triple stitching of all seams
- Traditional cross cut
- 8+ ounce Dacron material
 - ~Premium Dacron
 - ~Low Aspect style - dense warp, smaller denier yarn and higher count - bias stability to retain designed sail shape plus a softer hand (8.46 oz. Contender Sailcloth - 350x570).
- Anodized Aluminum Headboard
- Chafe guard at tack and head
- Thick, hand-sewn leather for protecting corners from chafe
- Cunningham ring
- Clew cover patch extended to include 1st reef
- Large reinforcing panels at head, tack and clew

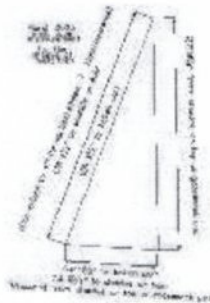
- Rutgerson pressed and webbing reinforced rings - webbed O-rings at tack and clew
- Heavy duty bolt rope with leather reinforced slider stations, pressed ring top station
- Luff and foot ropes
- Stainless steel ring in head and tack - fitting is stainless ring webbed to sail
 - ~Stainless steel corner rings with load reinforcement webbing
 - ~Clew and reef cringles are Rutgerson pressed Super Rings.

Staysail Specs:

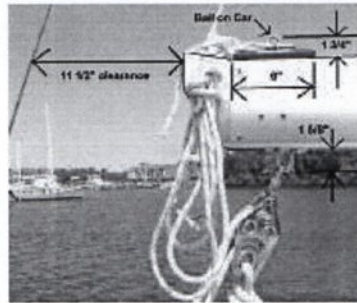
- Same fabric and construction as Main sail
- Vinyl coated stainless steel wire rope luff
- Bronze piston hanks
- Jackline to stay at bottom 10 feet of luff
- Chafe guards under piston hanks
 - ~At each hank, the jackline is fed through two thimbles that are seized to two grommets.
- Chafe guard at tack and head
- Loose footed
- Leech line with cleat
- 2-ply leech
- Single batten
- (1) set of reef points to result in 75 sf area when reefed

Sail Measurements - taken March, 2003

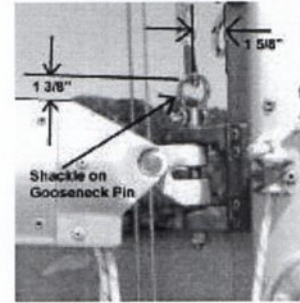
Dimensions:



Clew:

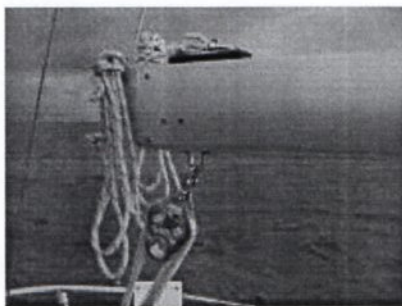


Tack:



Boom Tack & Clew

Clew:



Tack:



Sail Maintenance

Attached nylon slides with nylon webbing to main luff and foot.

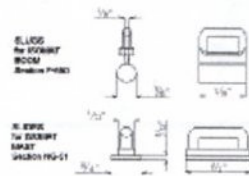
Cleaned all sails and existing lines:

- Used ZUD (contains oxalic acid) to remove the small number of metal stains
- Used very diluted concentration of Clorox for soaking of sails - to remove mildew/fungus
- Use Lysol spray to control mildew on sails

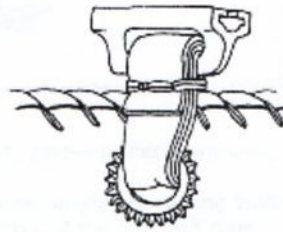
Reinforced bolt ropes with sail cloth tape where chaffed - sewn on.

- Used 1/2 inch wide nylon webbing to attach nylon slides and slugs on mast and boom.
- Use #7 waxed polyester twine and a #14 needle for seizing slides and hanks.
- Mast Luff Groove
- Use small amount of liquid soap applied to slides (or silicone spray) as lubricant

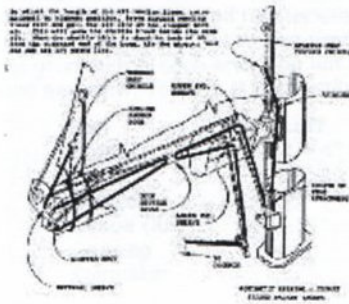
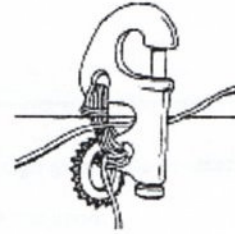
Slug and Slide Sizes:



Webbing attachment: Sail Slides and Slugs



Seizing Hanks



Isomat Section F-550 Boom

Set up with integral single line reefing for lower two sets of reefing points